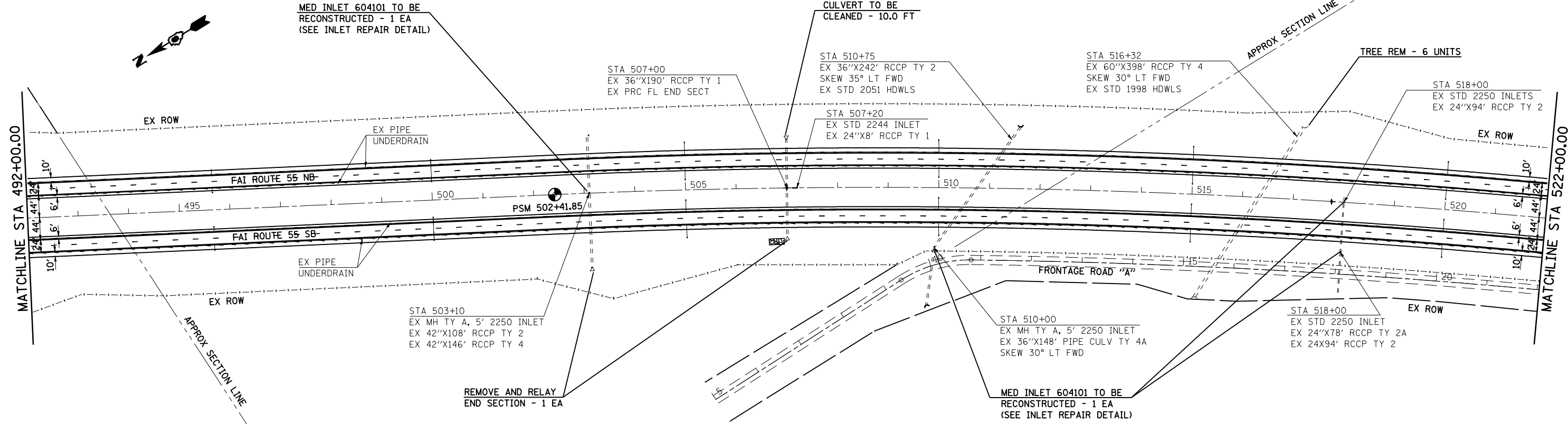
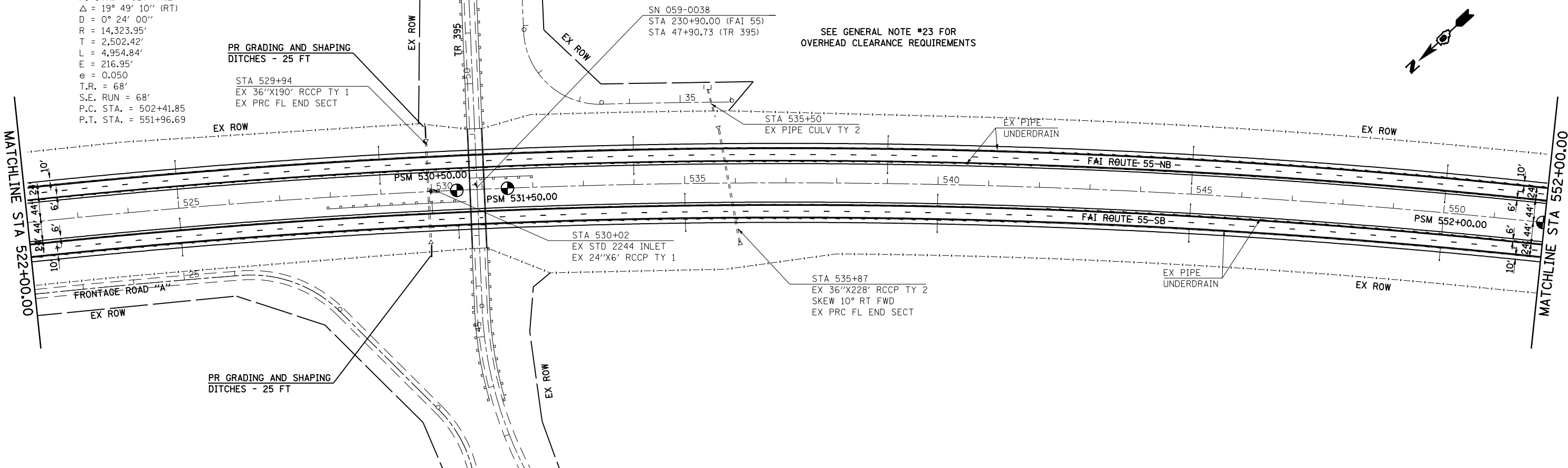


SEC 35, T8N, R6W, 3RD PM



SEC 34, T8N, R6W, 3RD PM



EXIST. CURVE I55N-1
 PI STA. = 527+44.27
 $\Delta = 19^\circ 49' 10''$ (RT)
 $D = 0^\circ 24' 00''$
 $R = 14,323.95'$
 $T = 2,502.42'$
 $L = 4,954.84'$
 $E = 216.95'$
 $e = 0.050$
 $T.R. = 68'$
 $S.E. RUN = 68'$
 $P.C. STA. = 502+41.85$
 $P.T. STA. = 551+96.69$

FILE NAME =	USER NAME = coxte	DESIGNED -	REVISED -
ei:\pw\work\p1dot\coxte\dms62217\067292	-sht-plan100.dgn	DRAWN -	REVISED -
	PLOT SCALE = 200.0000' / IN.	CHECKED -	REVISED -
	PLOT DATE = Feb-07-2011 02:00:58PM	DATE -	REVISED -

STATE OF ILLINOIS
DEPARTMENT OF TRANSPORTATION

I-55 PLAN SHEETS			
SCALE: 1" = 100'	SHEET NO.	OF SHEETS	STA. TO STA.

F.A.I. RTE.	SECTION	COUNTY	TOTAL SHEETS	SHEET NO.
55	(59,68)RS-3,BR		137	38
CONTRACT NO. 72921			ILLINOIS FED. AID PROJECT	