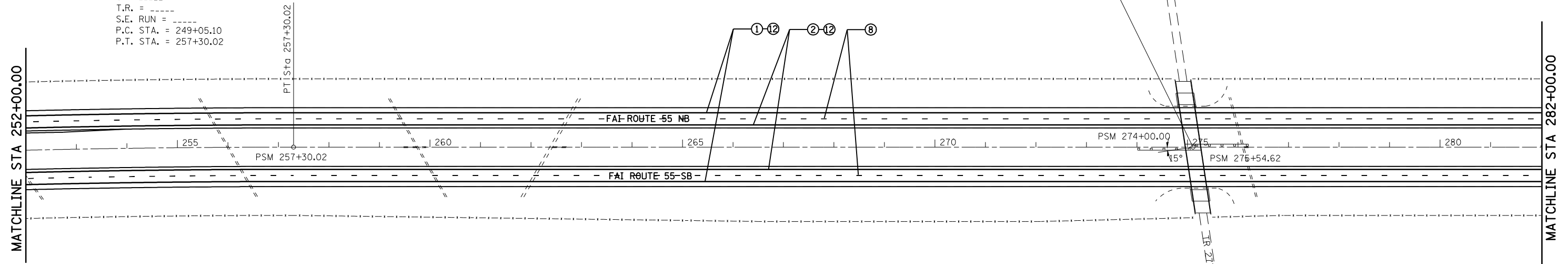


EXIST. CURVE 30004
 PI STA. = 253+17.60
 $\Delta = 2^\circ 03' 44''$ (RT)
 D = $0^\circ 15' 00''$
 R = 22,918.33'
 T = 412.51'
 L = 824.92'
 E = 3.71'
 e = -----
 T.R. = -----
 S.E. RUN = -----
 P.C. STA. = 249+05.10
 P.T. STA. = 257+30.02

SN 068-0052
 STA 275+10.93 (I-55) =
 STA 50+12.23 (T.R. 277)

MATCHLINE STA 252+00.00

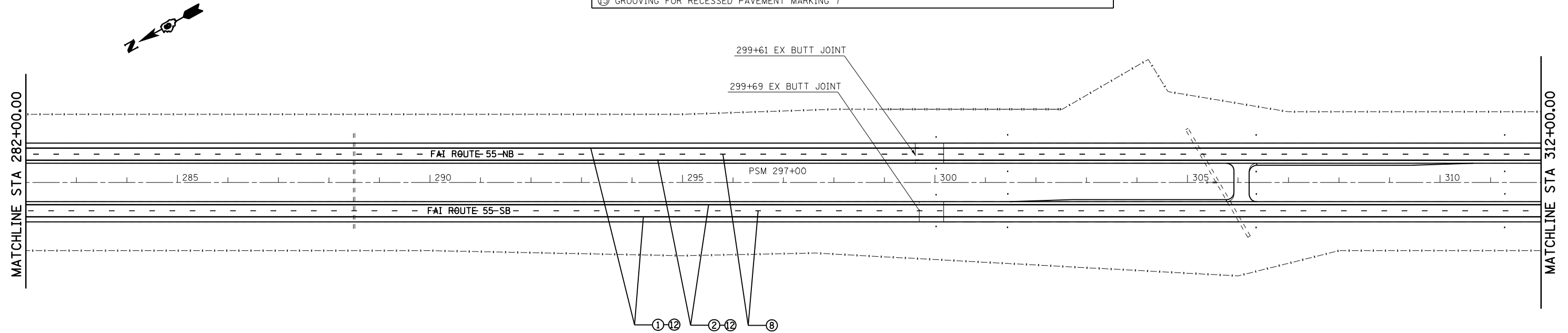
MATCHLINE STA 282+00.00



PAVEMENT MARKING LEGEND		
①	URETHANE PAVEMENT MARKING - LINE 5"	(SOLID WHITE LINE)
②	URETHANE PAVEMENT MARKING - LINE 5"	(YELLOW)
③	PREFORMED PLASTIC PAVEMENT MARKING, TYPE B-INLAID - 6"	(SOLID WHITE LINE)
④	URETHANE PAVEMENT MARKING - LINE 5"	(WHITE SKIP DASH)
⑤	URETHANE PAVEMENT MARKING - LINE 8"	(SOLID WHITE LINE)
⑥	URETHANE PAVEMENT MARKING - LINE 12"	(SOLID WHITE LINE)
⑦	PREFORMED PLASTIC PAVEMENT MARKING, TYPE B-INLAID - LETTER AND SYMBOLS	(WHITE SYMBOLS)
⑧	PREFORMED PLASTIC PAVEMENT MARKING, TYPE B-INLAID - 5"	(WHITE SKIP DASH)
⑨	PREFORMED PLASTIC PAVEMENT MARKING, TYPE B-INLAID - 8"	(SOLID WHITE LINE)
⑩	PREFORMED PLASTIC PAVEMENT MARKING, TYPE B-INLAID - 24"	(SOLID WHITE LINE)
⑪	URETHANE PAVEMENT MARKING - LINE 12"	(SOLID YELLOW LINE)
⑫	GROOVING FOR RECESSED PAVEMENT MARKING 6"	
⑬	PREFORMED PLASTIC PAVEMENT MARKING, TYPE B-INLAID - 12"	(SOLID WHITE LINE)
⑭	URETHANE PAVEMENT MARKING - LINE 6"	(WHITE SKIP DASH)
⑮	GROOVING FOR RECESSED PAVEMENT MARKING 7"	

MATCHLINE STA 282+00.00

MATCHLINE STA 312+00.00



FILE NAME =	USER NAME = coxte	DESIGNED -	REVISED -
ei:\pw\work\p1\dot\coxte\dms62217\067292	-sht-pmk.dgn	DRAWN -	REVISED -
	PLOT SCALE = 200.0000' / IN.	CHECKED -	REVISED -
	PLOT DATE = Feb-07-2011 02:02:23PM	DATE -	REVISED -

STATE OF ILLINOIS
 DEPARTMENT OF TRANSPORTATION

I-55 PAVEMENT MARKING
 PLAN SHEETS

SCALE: 1" = 100' SHEET NO. OF SHEETS STA. 252+00.00 TO STA. 312+00.00

F.A.I. RTE.	SECTION	COUNTY	TOTAL SHEETS	SHEET NO.
55	(59,68)RS-3,BR		137	55
CONTRACT NO. 72921				

ILLINOIS FED. AID PROJECT
 MONTGOMERY, MACOUPIN