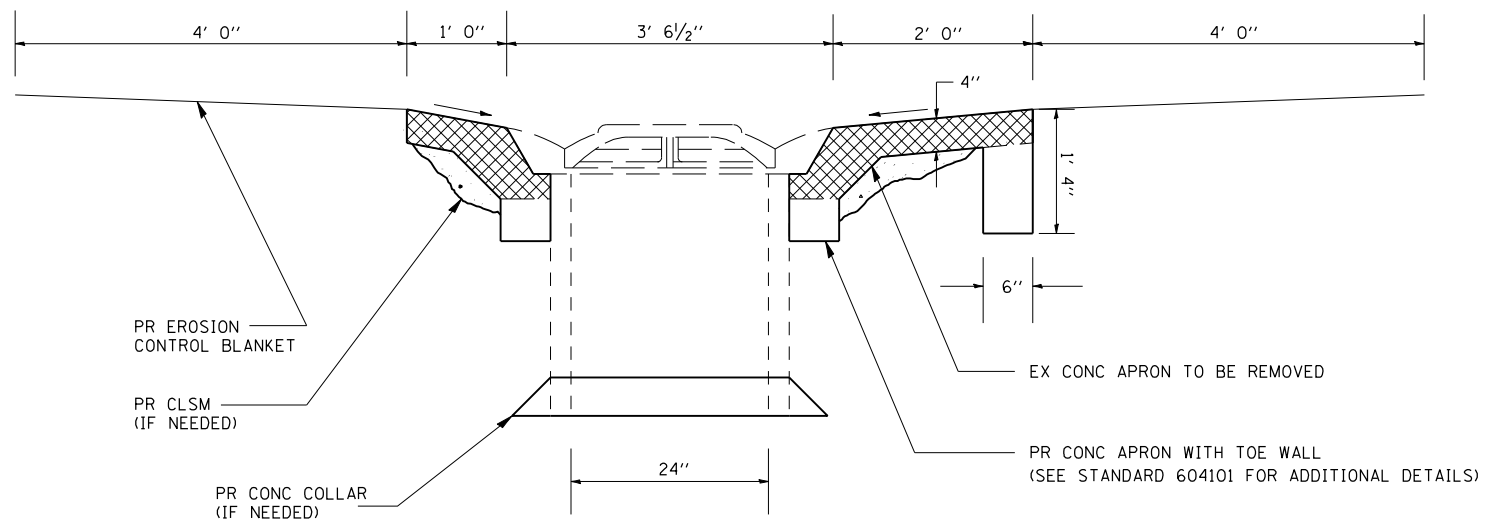
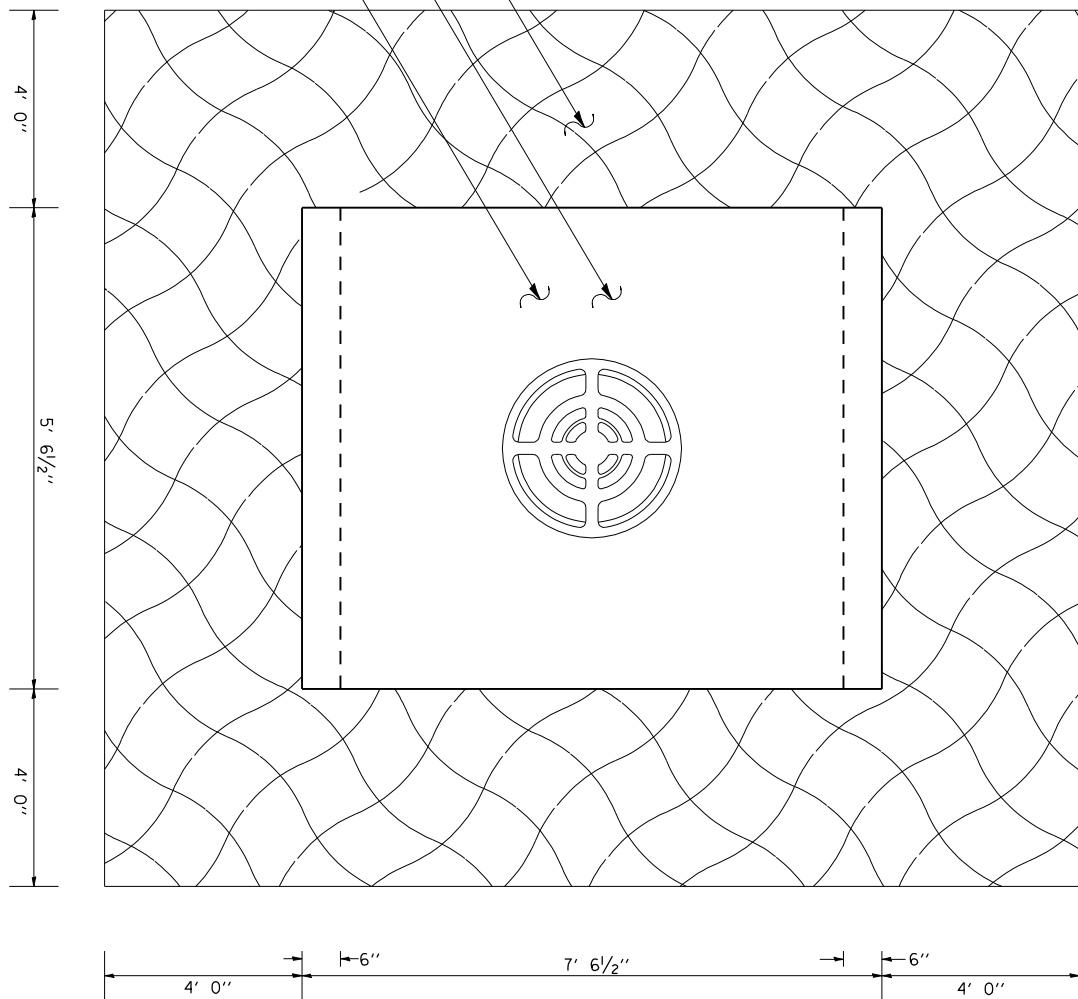


PR EROSION CONTROL BLANKET
 PR CONC APRON
 EX CONC APRON



SECTION A-A

REPAIRS TO INLET STANDARD 2250

LOCATION	INLET TO BE RECONSTRUCTED (EACH)	EROSION CONTROL BLANKET (SQ YD)	CONTROLLED LOW STRENGTH MATERIAL (CU YD)	CONCRETE COLLAR (CU YD)
MED STA 383+41	1	18.7	1.5	0.2
MED STA 384+00	1	18.7	1.5	0.2
MED STA 438+72	1	18.7	1.5	0.2
MED STA 457+00	1	18.7	1.5	0.2
MED STA 482+00	1	18.7	1.5	0.2
MED STA 492+00	1	18.7	1.5	0.2
MED STA 503+10	1	18.7	1.5	0.2
SB STA 510+00	1	18.7	1.5	0.2
SB STA 518+00	1	18.7	1.5	0.2
MED STA 518+00	1	18.7	1.5	0.2
MED STA 580+25	1	18.7	1.5	0.2
•• SB STA 611+00	1	18.7	1.5	0.2
MED STA 670+50	1	18.7	1.5	0.2
MED STA 695+00	1	18.7	1.5	0.2
TOTAL	14	261.8	21.0	2.8

NOTES:

- SEE SEEDING SCHEDULE FOR SEEDING QUANTITIES.
- SEE STANDARD 604101 FOR ADDITIONAL DETAILS NOT SHOWN. THE TOE WALL AT THE LONG END OF THE APRON IS IN ADDITION TO WHAT IS SHOWN IN STANDARD 604101.
- CONTROLLED LOW STRENGTH MATERIAL AND/OR CONCRETE COLLAR TO BE USED IF DEEMED NECESSARY BY THE ENGINEER, THE QUANTITY IN THE ABOVE SCHEDULE IS ESTIMATED. ACTUAL QUANTITY TO BE DETERMINED BY THE ENGINEER IN THE FIELD.
- THE INLET AT STA 611+00 NEEDS TO BE LOWERED APPROXIMATELY ONE FOOT TO IMPROVE DRAINAGE. THE ENGINEER WILL DETERMINE IN THE FIELD THE ACTUAL AMOUNT TO BE LOWERED. COST OF LOWERING INLET WILL BE INCLUDED IN THE COST OF RECONSTRUCTING INLET.

FILE NAME =	USER NAME = kernee	DESIGNED -	REVISED -
ct:\pw\work\p\dot\kernee\dms62217\0672921-sht-details.dgn		DRAWN -	REVISED -
PLOT SCALE = 100.0000' / IN.		CHECKED -	REVISED -
PLOT DATE = Mar-08-2011 09:55:54AM		DATE -	REVISED -

STATE OF ILLINOIS
 DEPARTMENT OF TRANSPORTATION

INLET REPAIR	
SCALE: _____	SHEET NO. ____ OF ____ SHEETS
STA. _____	TO STA. _____

F.A.I. RTE. =	SECTION	COUNTY	TOTAL SHEETS	SHEET NO.
55	(59.68)RS-30B		137	70
CONTRACT NO. 72921			ILLINOIS FED. AID PROJECT	