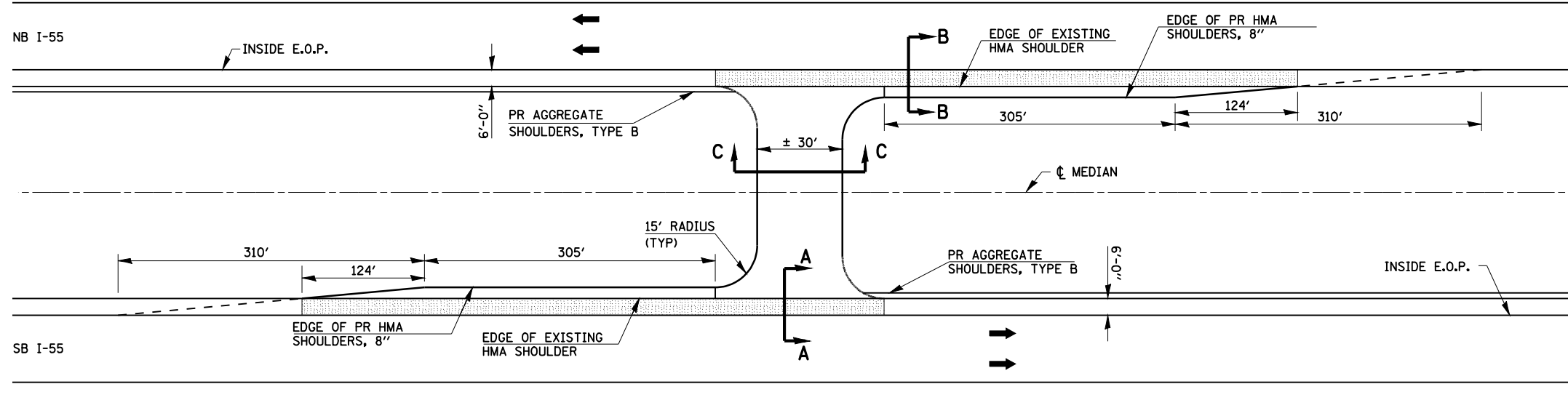
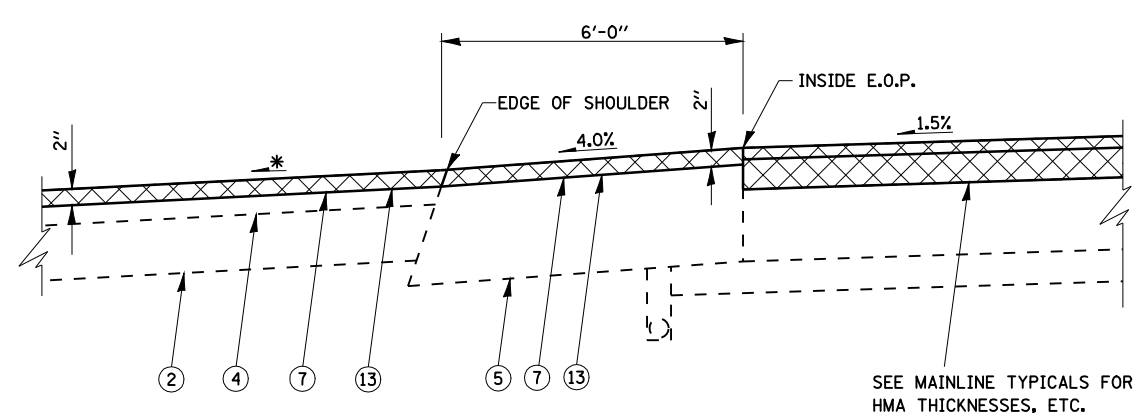


EMERGENCY MEDIAN CROSSOVERS

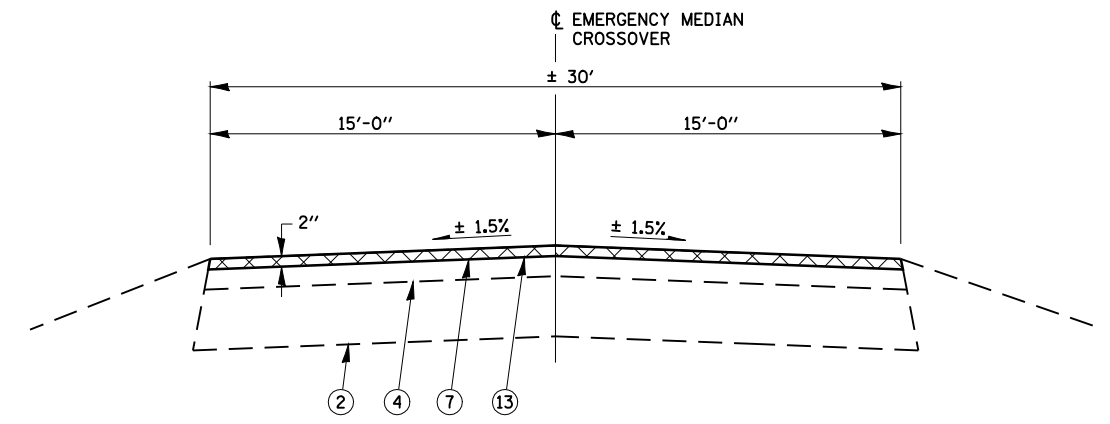


NOTES:
 TWO DELINEATORS SHALL BE PLACED IN ADVANCE OF THE MEDIAN CROSSOVERS. ONE SHALL BE AT THE CROSSOVER, THE OTHER 800 FT IN ADVANCE OF THE FIRST. THE DELINEATOR AT THE CROSSOVER SHALL HAVE TWO REFLECTORS, AND THE DELINEATOR 800 FT IN ADVANCE SHALL HAVE THREE REFLECTORS
 OMIT RUMBLE STRIPS IN SHADED [] AREAS OF SHOULDER

PLAN VIEW

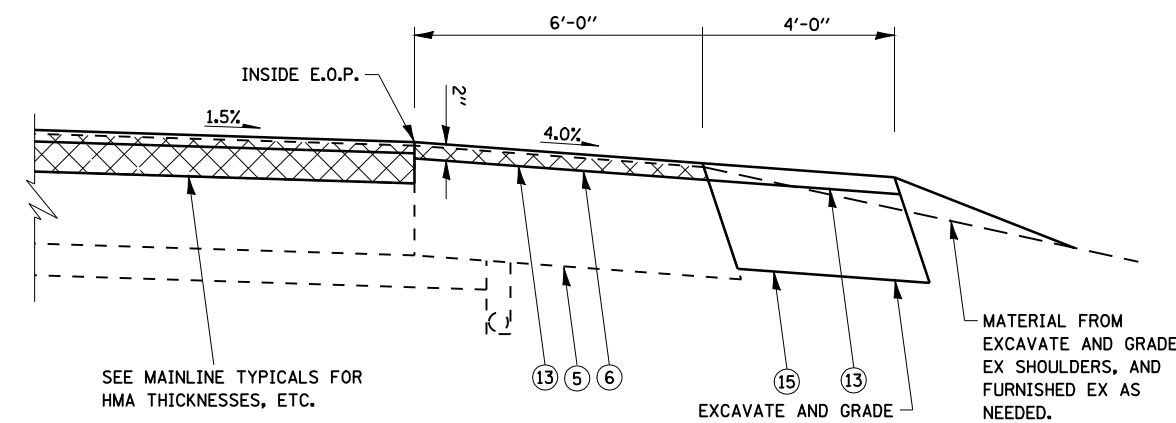


SECTION A - A



SECTION C - C

LEGEND	
①	EX AGGREGATE SUB-BASE, 4"
②	EX AGGREGATE BASE COURSE
③	EX P.C.C. PAVEMENT
④	EX HOT-MIX ASPHALT OVERLAY
⑤	EX HOT-MIX ASPHALT SHOULDER
⑥	PR HOT-MIX ASPHALT SURFACE REMOVAL 1 1/2"
⑦	PR HOT-MIX ASPHALT SURFACE REMOVAL 2"
⑧	PR HOT-MIX ASPHALT SURFACE REMOVAL 3/4"
⑨	PR HOT-MIX ASPHALT SURFACE REMOVAL 5"
⑩	PR POLYMERIZED HOT-MIX ASPHALT BINDER COURSE, 2 1/4"
⑪	PR POLYMERIZED HOT-MIX ASPHALT BINDER COURSE 3 1/2"
⑫	PR POLYMERIZED HOT-MIX ASPHALT SURFACE COURSE, 1 1/2"
⑬	PR HOT-MIX ASPHALT SURFACE COURSE, MIX "C", N50 2"
⑭	PR AGGREGATE SHOULDERS, TYPE B
⑮	PR HOT-MIX ASPHALT SHOULDERS, 8"



SECTION B - B

EMERGENCY CROSSOVER IMPROVEMENT				
LOCATION	HMA SURF	EXCAV & GR	HMA	HMA SURF CSE
	REM 2"	EX SHLDS	SHOULDERS 8"	MIX C N50
	SQ YD	UNIT	SQ YD	TON
I-55 STA 149+15	279.02	8.6	381.34	31.25
I-55 STA 249+40	287.46	8.6	381.34	32.20
I-55 STA 306+10	274.77	8.6	381.34	30.77
I-55 STA 444+75	274.77	8.6	381.34	30.77
I-55 STA 579+90	274.77	8.6	381.34	30.77
I-55 STA 660+30	274.77	8.6	381.34	30.77
TOTAL	1,665.56	51.6	2,288.04	186.53

* - MAINTAIN SLOPES AWAY FROM MAINLINE PAVEMENT TO ENSURE PROPER DRAINAGE INTO MEDIAN DITCHES.