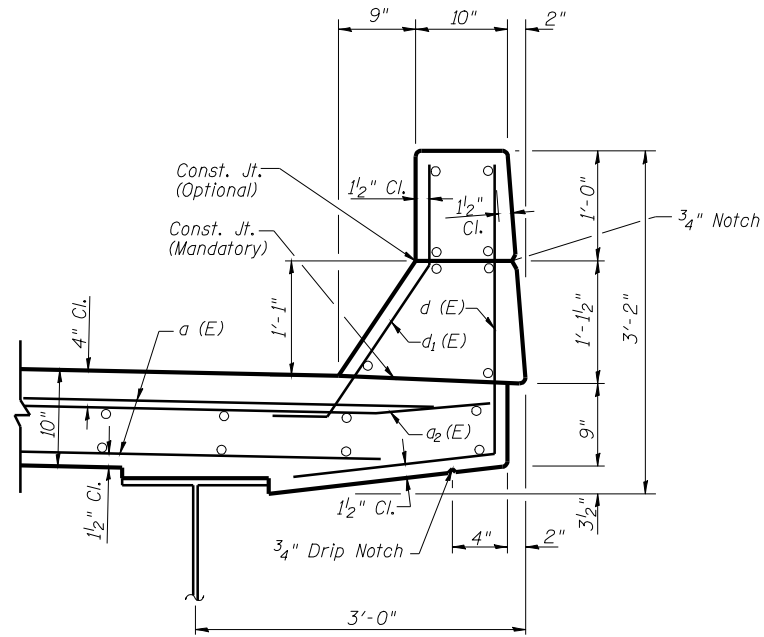
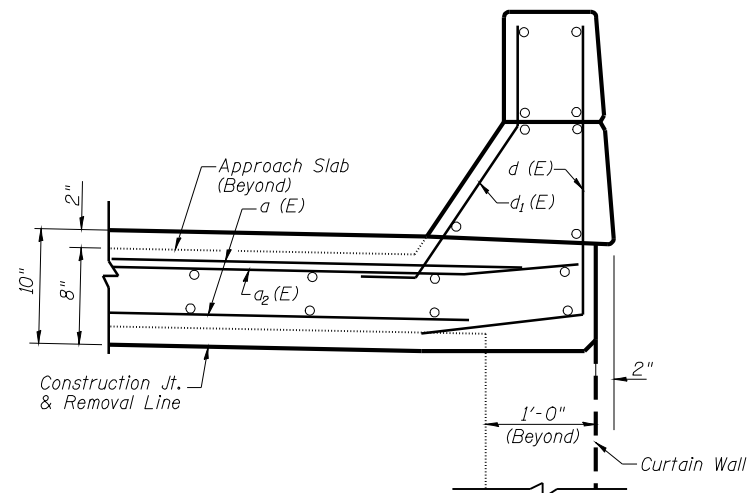


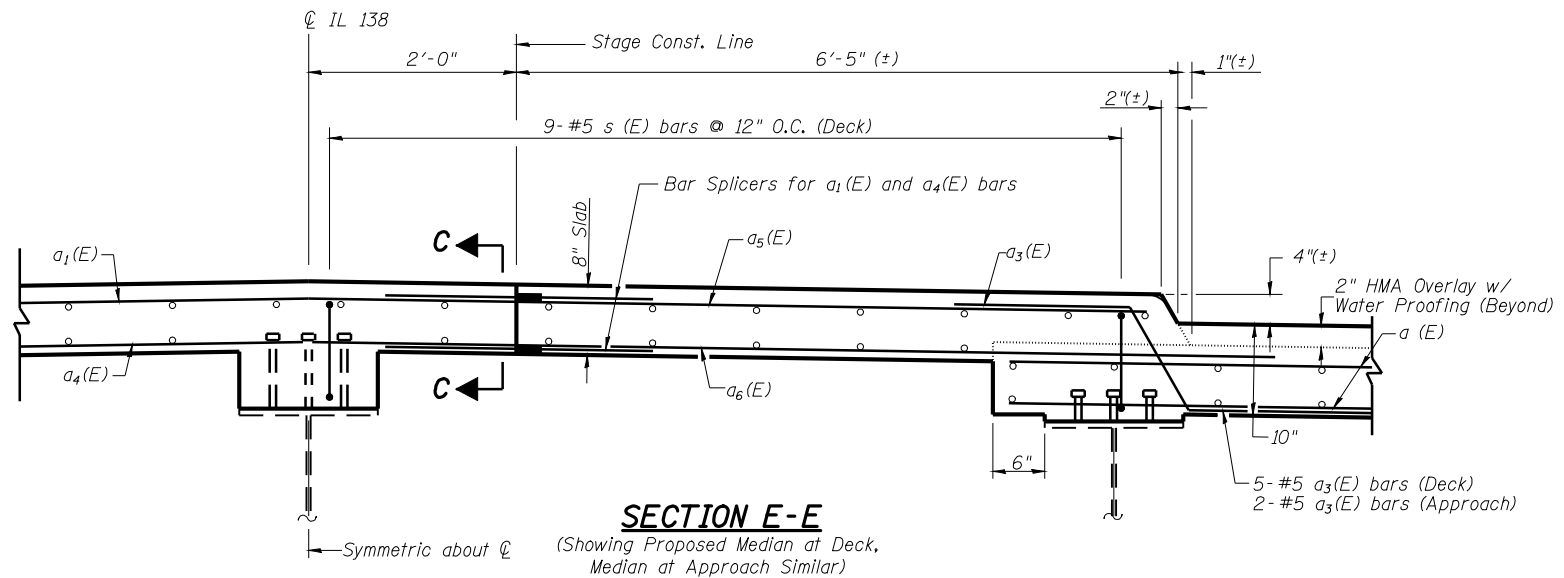
STATE OF ILLINOIS  
DEPARTMENT OF TRANSPORTATION



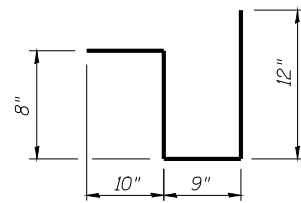
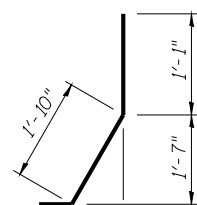
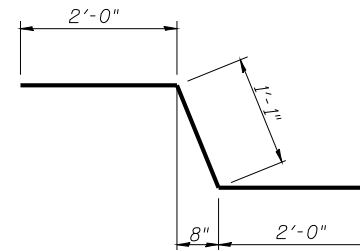
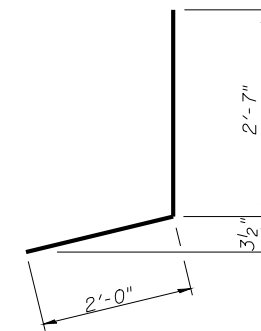
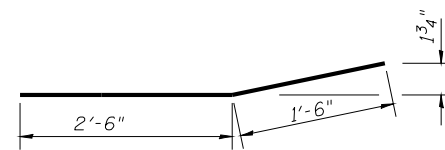
**SECTION D-D**  
(Showing Parapet at Deck)



**SECTION F-F**  
(Showing Parapet at Approach)



**SECTION E-E**  
(Showing Proposed Median at Deck, Median at Approach Similar)



**s (E) Bar**

**a<sub>3</sub>(E) Bar**

**BILL OF MATERIAL**

Bar	No.	Size	Length	Shape
a (E)	96	#6	26'-4"	—
a <sub>1</sub> (E)	24	#5	10'-1"	—
a <sub>2</sub> (E)	32	#6	4'-0"	—
a <sub>3</sub> (E)	48	#5	5'-1"	—
a <sub>4</sub> (E)	32	#5	12'-0"	—
a <sub>5</sub> (E)	24	#5	6'-1"	—
a <sub>6</sub> (E)	32	#5	8'-0"	—
d (E)	32	#4	4'-7"	—
d <sub>1</sub> (E)	32	#5	3'-5"	—
s (E)	72	#5	3'-3"	—
Concrete Removal			Cu. Yd.	27.0
Concrete Superstructure			Cu. Yd.	26.7
Reinforcement Bars, Epoxy Coated			Pound	5780
Bar Splicers			Each	56
Protective Coat			Sq. Yd.	66

**NOTES:**

- Any reinforcement bars that are damaged during concrete removal operations shall be repaired or replaced using an approved bar splicer or anchorage system. Cost included in the cost of Concrete Removal.
- Removal of all existing expansion joints shall be included in the cost of Concrete Removal.

**DECK REPAIR DETAILS  
STRUCTURE NO. 059-0039**

(Sheet 3 of 3)

SHEET NO. 5 10 SHEETS	F.A.S. RTE.	SECTION	COUNTY	TOTAL SHEETS	SHEET NO.
	728	(59,68) RS-3, BR	Macoupin	137	101
CONTRACT NO. 72921					
FED. ROAD DIST. NO. 6 ILLINOIS FED. AID PROJECT					