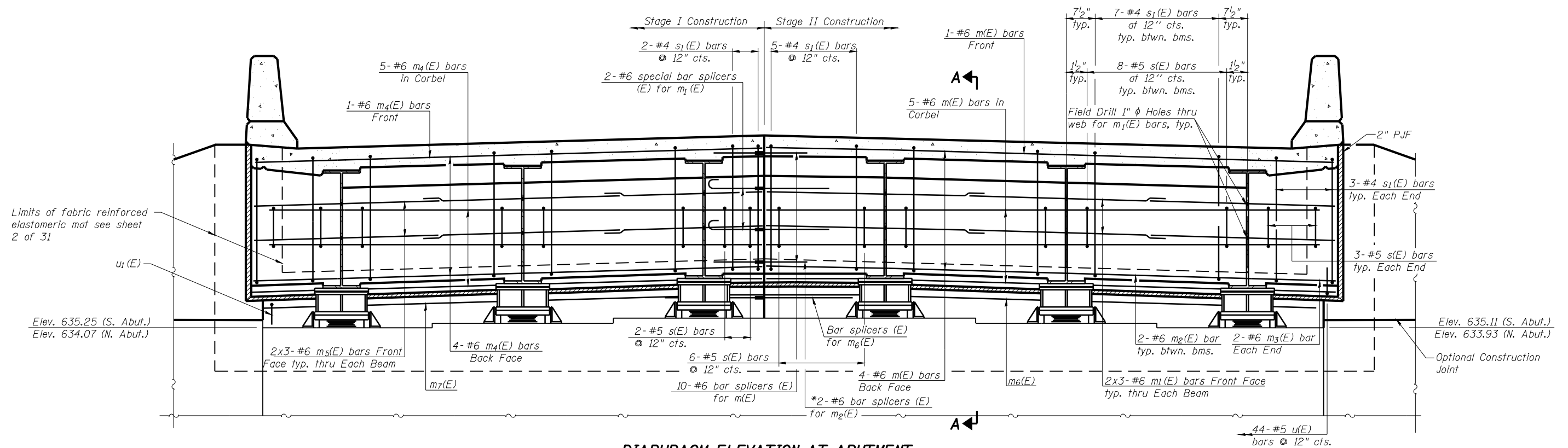


STATE OF ILLINOIS
DEPARTMENT OF TRANSPORTATION



DIAPHRAGM ELEVATION AT ABUTMENT

(Looking South at South Abutment)
(North Abutment Similar)

Notes:

Reinforcement bars in diaphragm are billed with superstructure on sheet 11 of 31.

Concrete in diaphragm is included with Concrete Superstructure on sheet 11 of 31.

Concrete in backwall is included with Concrete Structures on sheet 11 of 31.

For details of bars s(E), s1(E), v(E), u(E) & u1(E) see sheet 11 of 31.

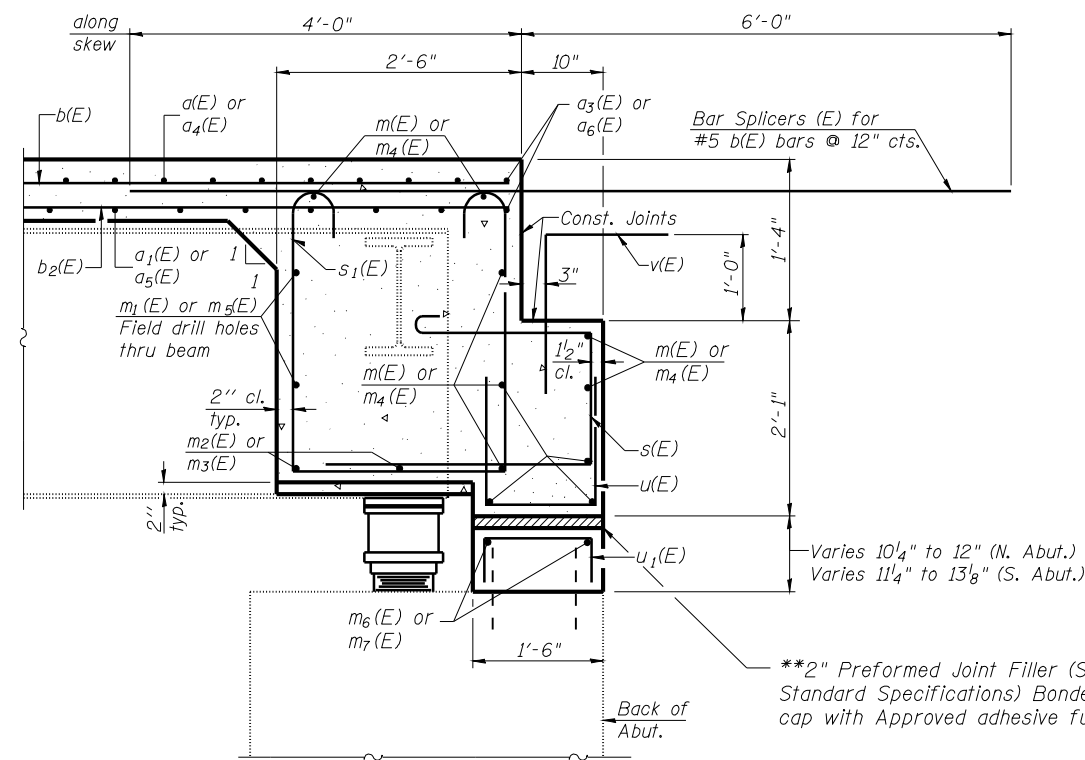
For layout of u1(E), m6(E) & m7(E) bars see sheet 28 of 31.

The s(E) and s1(E) bars shall be placed parallel to the beams. Spacing for these bars shall be at right angles to the beams.

The cost of field drilling holes in webs for m1(E) & m5(E) is included in the cost of Reinforcement Bars (Epoxy Coated).

MIN. BAR LAP

#6 bar = 3'-4" (Diaphragm)



SECTION A-A

Dimensions at right angles to abutment, except as shown.

**Cost included with Concrete Superstructure.

**SEMI-INTEGRAL
DIAPHRAGM DETAILS
STRUCTURE NO. 059-0040 (S.B.)**

SHEET NO. 12 31 SHEETS	F.A.I. RTE. 55	SECTION (59, 68)RS-3, BR	COUNTY Macoupin	TOTAL SHEETS 137	SHEET NO. 115
	CONTRACT NO. 72921				
FED. ROAD DIST. NO. 6 ILLINOIS FED. AID PROJECT					