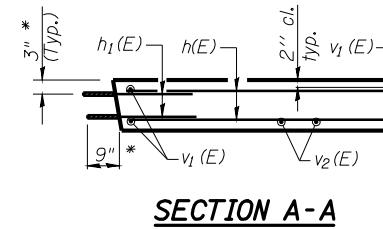
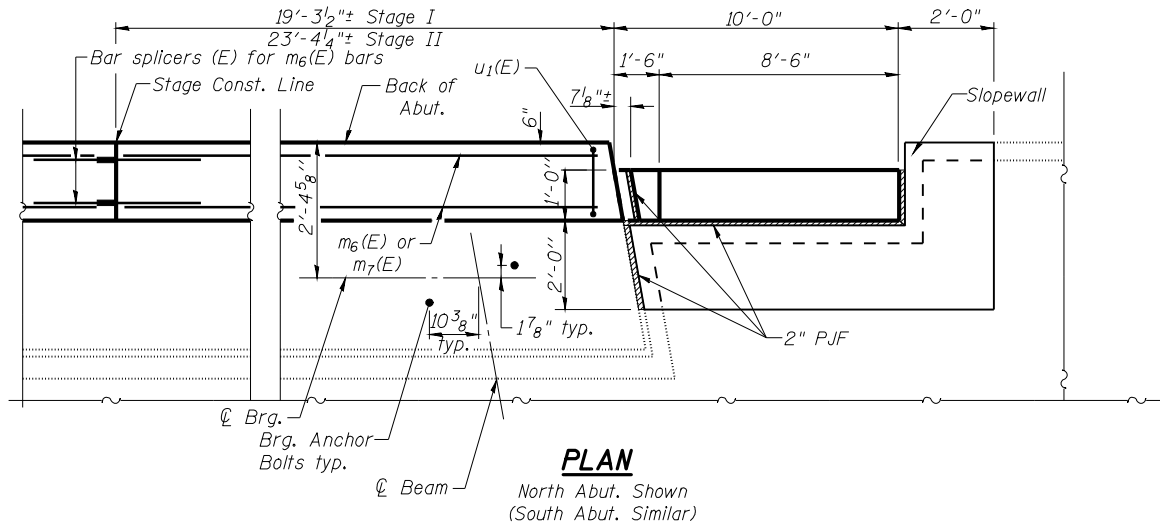
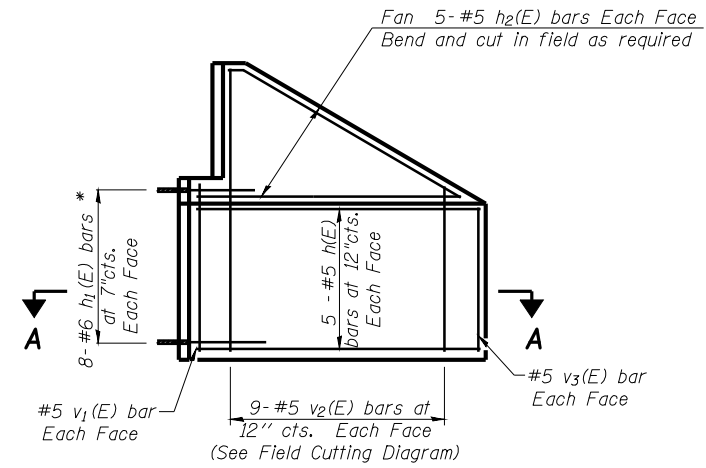
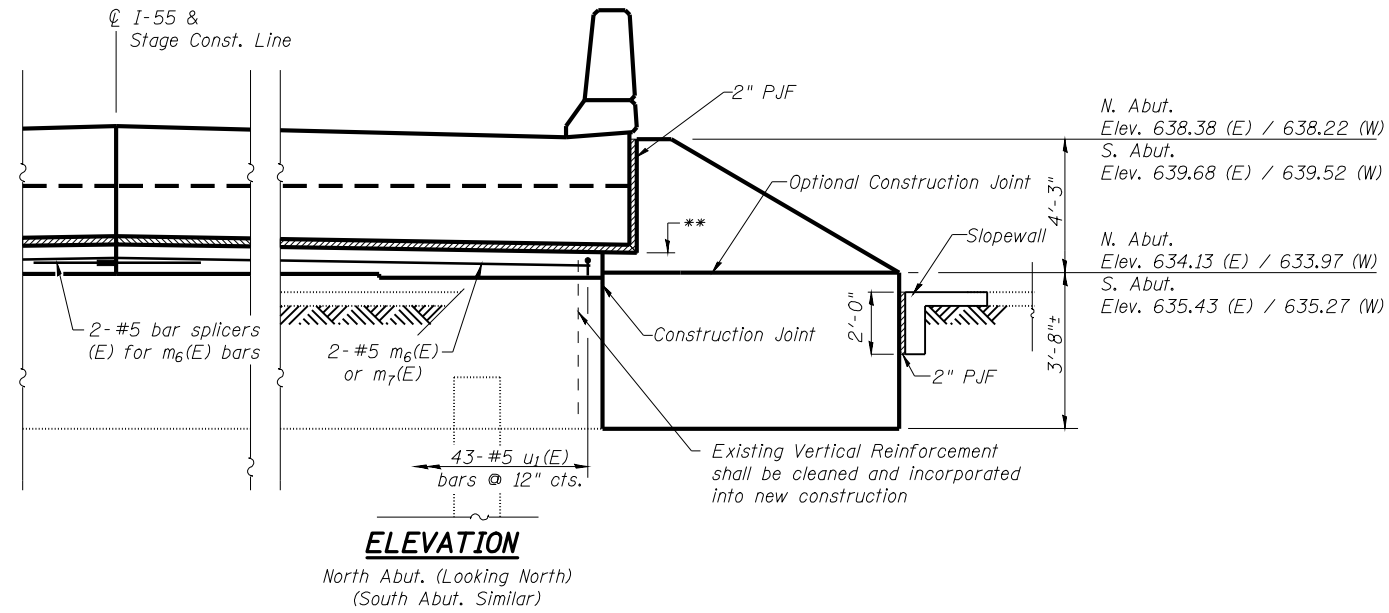
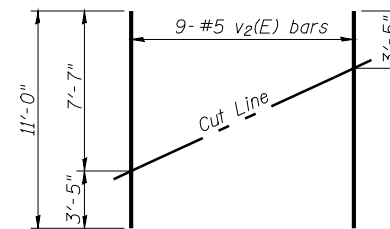


STATE OF ILLINOIS
DEPARTMENT OF TRANSPORTATION



* Epoxy grout #6 bars in 1" holes 9" min. into existing abutment. All work shall be in accordance with Section 584 of the Standard Specifications. All work shall be inspected and approved by engineer. The cost of this work including all materials & labor shall be included in the cost per cu. yd. of Concrete Structures.

Note:
Slope wall shall be reinforced with welded wire fabric, 6 in. x 6 in. - W4.0 x W4.0, weighing 58 lbs. per 100 sq. ft.



BILL OF MATERIAL
(2 Locations)

Bar	No.	Size	Length	Shape
h(E)	40	#5	9'-6"	———
h1(E)	64	#6	6'-0"	———
h2(E)	40	#5	10'-0"	———
m6(E)	4	#5	23'-0"	———
m7(E)	4	#5	18'-11"	———
u1(E)	86	#5	2'-5"	⊏
v1(E)	8	#5	4'-4"	———
v2(E)	36	#5	11'-0"	———
v3(E)	8	#5	3'-4"	———
Structure Excavation		Cu. Yd.	22	
Concrete Structures		Cu. Yd.	12.4	
Reinforcement Bars, Epoxy Coated		Pound	2,260	
Sloped Wall, 4 inch		Sq. Yd.	6	
Bar Splicers		Each	4	

**WINGWALL AND SLOPEWALL DETAILS
STRUCTURE NO. 059-0040 (S.B.)**

* N. Abut. Elev. 634.80 (E)
N. Abut. Elev. 634.64 (W)

S. Abut. Elev. 636.10 (E)
S. Abut. Elev. 635.94 (W)

SHEET NO. 28 31 SHEETS	F.A.I. RTE.	SECTION	COUNTY	TOTAL SHEETS	SHEET NO.
	55	(59, 68)RS-3, BR	Macoupin	137	122
CONTRACT NO. 72921					
FED. ROAD DIST. NO. 6 ILLINOIS FED. AID PROJECT					