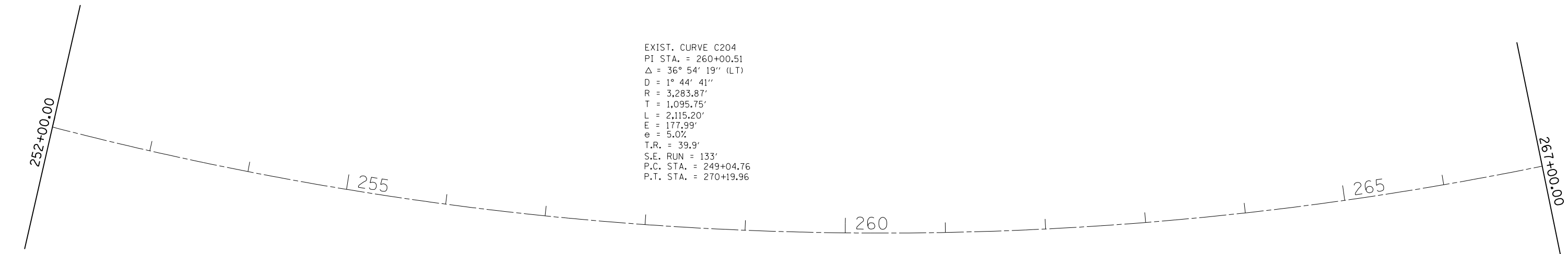
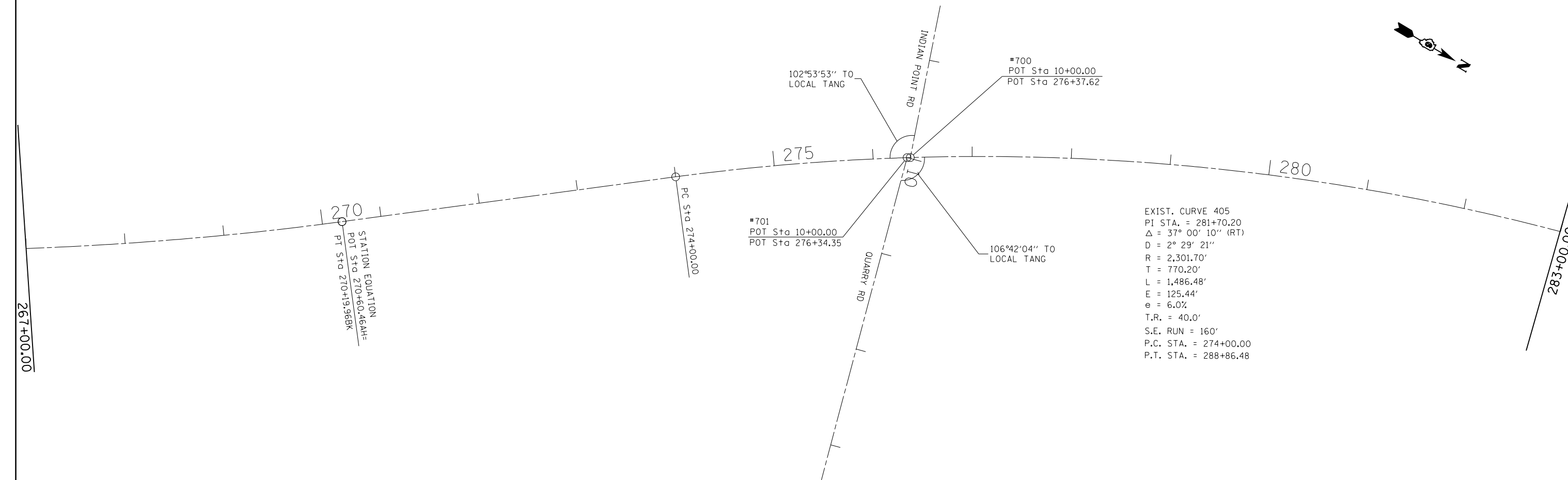




EXIST. CURVE C204  
 PI STA. = 260+00.51  
 $\Delta = 36^\circ 54' 19''$  (LT)  
 D = 1° 44' 41"  
 R = 3,283.87'  
 T = 1,095.75'  
 L = 2,115.20'  
 E = 177.99'  
 e = 5.0%  
 T.R. = 39.9'  
 S.E. RUN = 133'  
 P.C. STA. = 249+04.76  
 P.T. STA. = 270+19.96



EXIST. CURVE 405  
 PI STA. = 281+70.20  
 $\Delta = 37^\circ 00' 10''$  (RT)  
 D = 2° 29' 21"  
 R = 2,301.70'  
 T = 770.20'  
 L = 1,486.48'  
 E = 125.44'  
 e = 6.0%  
 T.R. = 40.0'  
 S.E. RUN = 160'  
 P.C. STA. = 274+00.00  
 P.T. STA. = 288+86.48



FILE NAME =	USER NAME = laughlinr1	DESIGNED -	REVISED -
ei:\pwork\pwork\laughlinr1\0216293\06265-sht-plansheets.dgn		DRAWN -	REVISED -
PLOT SCALE = 100.0000' / in.		CHECKED -	REVISED -
PLOT DATE = Feb-08-2011 11:29:15AM		DATE -	REVISED -

**STATE OF ILLINOIS  
 DEPARTMENT OF TRANSPORTATION**

**ALIGNMENT DIAGRAM - IL 29**

SCALE: SHEET NO. 7 OF 22 SHEETS STA. 252+00.00 TO STA. 283+00.00

F.A.P. RTE.	SECTION	COUNTY	TOTAL SHEETS	SHEET NO.
658	(O)RS-1, (C,D,E)RS-3	MENARD	53	21
				CONTRACT NO. 72D65
ILLINOIS FED. AID PROJECT				