

Code No.	Item	UNIT	TOTAL	100% STATE	
				URBAN	RURAL
				DE-MISC CONST CODE 0005	
				LOGAN COUNTY	SCHUYLER COUNTY
40300400	BITUMINOUS MATERIALS (COVER AND SEAL COATS)	TON	36	21	15
40300500	COVER COAT AGGREGATE	TON	125	72	53
40300600	SEAL COAT AGGREGATE	TON	125	72	53
67100100	MOBILIZATION	L SUM	1	0.5	0.5

FILE NAME =	USER NAME = laughlin	DESIGNED -	REVISED -
c:\pwork\p1dot\laughlin\0253722\06	72E20-shr-500.dgn	DRAWN -	REVISED -
	PLOT SCALE = 40.0000 1/1 in.	CHECKED -	REVISED -
	PLOT DATE = Feb-08-2011 09:33:40AM	DATE -	REVISED -

**STATE OF ILLINOIS
DEPARTMENT OF TRANSPORTATION**

SUMMARY OF QUANTITIES

SCALE: SHEET NO. OF SHEETS STA. TO STA.

F.A. RTE.	SECTION	COUNTY	TOTAL SHEETS	SHEET NO.
	SEAL COAT 2011	*	5	2
ILLINOIS FED. AID PROJECT			CONTRACT NO. 72E20	

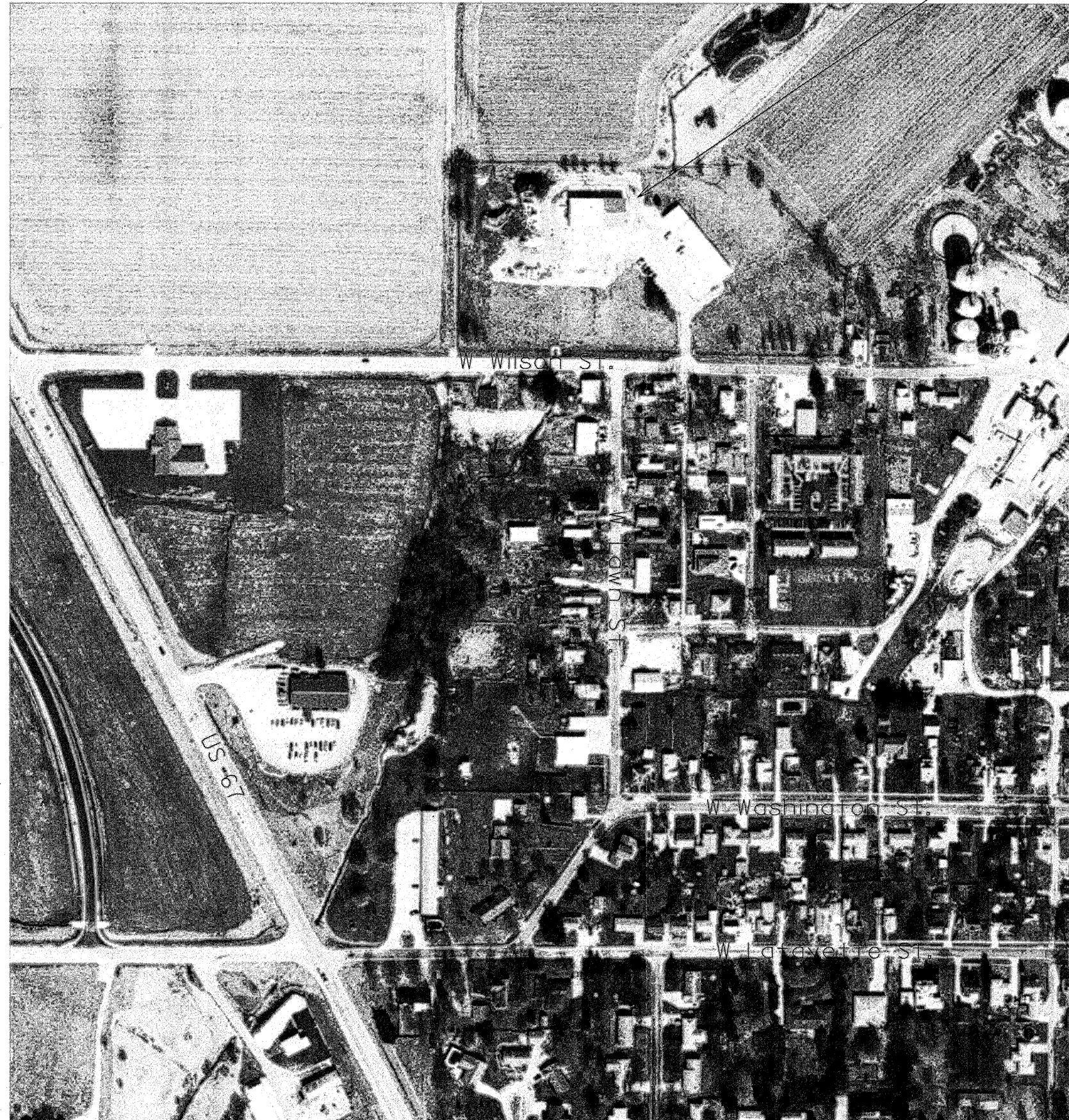
LOCATION	MAINTENANCE FACILITY LOT AREA (SQ YD)	BITUMINOUS MATERIALS (COVER AND SEAL COATS) (TON)	COVER COAT AGGREGATE (TON)	SEAL COAT AGGREGATE (TON)
1415 Short 11th Street Lincoln, IL 62656 Logan County	7200	21	72	72
705 Wilson Street Rushville, IL 62681 Schuyler County	5262	15	53	53
TOTAL AREA	12,462	36	125	125

GENERAL NOTES

1. THE CONTRACTOR SHALL GIVE IDOT OPERATIONS TWO WEEKS NOTICE PRIOR TO STARTING WORK IN ORDER FOR IDOT TO CLEAR THE LOTS AND DO SURFACE PREPARATION.

DISTRICT SIX	
EXAMINED <u>JAN 24</u> 20 <u>11</u>	<i>Chris Walker</i>
OPERATIONS ENGINEER	
EXAMINED <u>JANUARY 24,</u> 20 <u>11</u>	<i>John C. W. [Signature]</i>
PROGRAM DEVELOPMENT ENGINEER	
EXAMINED <u>JANUARY 24</u> 20 <u>11</u>	<i>Jimmy Ford</i>
PROJECT IMPLEMENTATION ENGINEER	

Maintenance Facility in Rushville

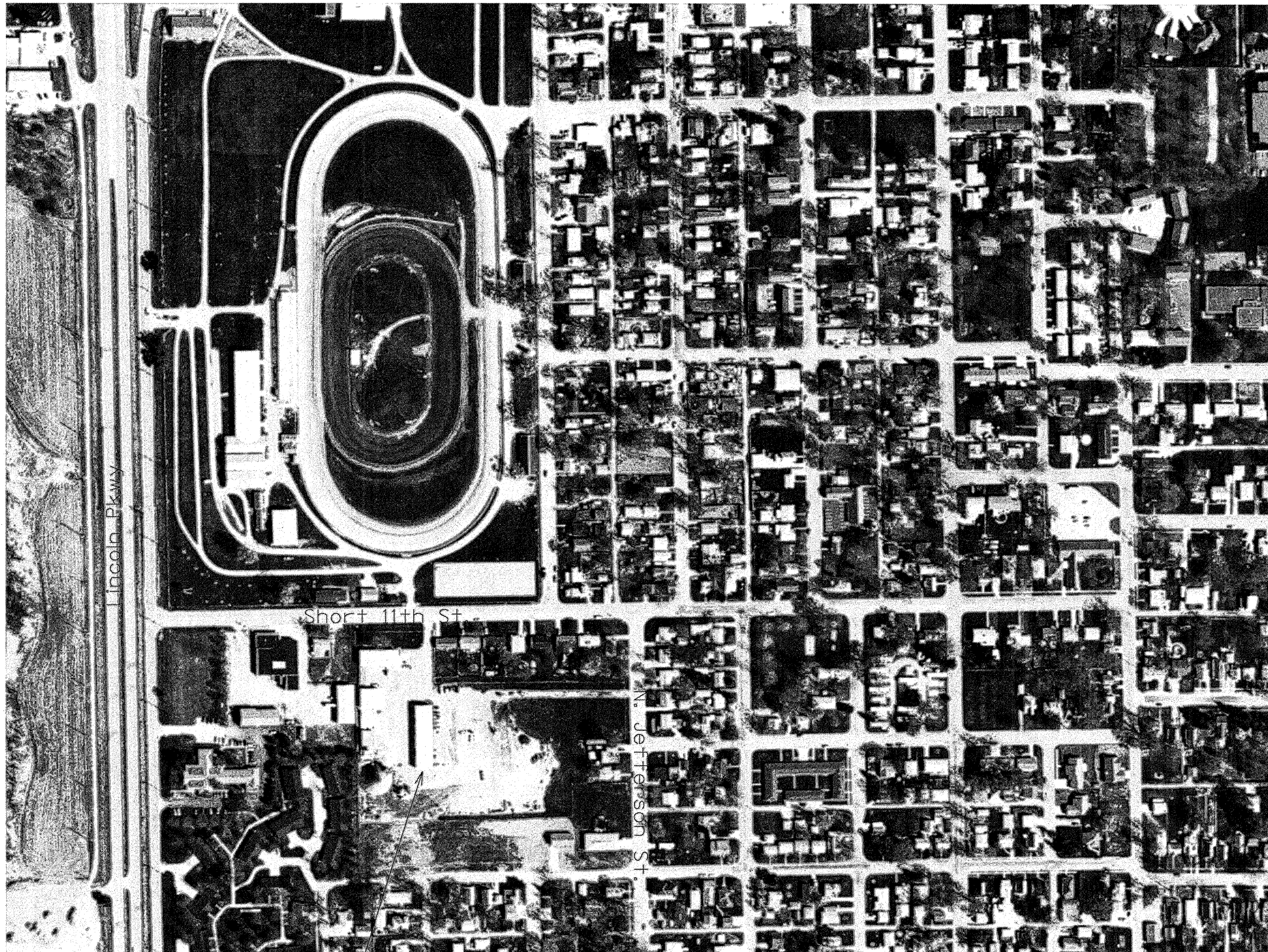


FILE NAME =	USER NAME = laughlinr1	DESIGNED -	REVISED -
c:\pwork\p1dot\laughlinr1\d0253722\067	2E20-sht-details.dgn	DRAWN -	REVISED -
	PLOT SCALE = 88.0000' / in.	CHECKED -	REVISED -
	PLOT DATE = Feb-08-2011 09:38:11AM	DATE -	REVISED -

**STATE OF ILLINOIS
DEPARTMENT OF TRANSPORTATION**

SCALE:	SHEET NO.	OF	SHEETS	STA.	TO STA.
--------	-----------	----	--------	------	---------

F.A. RTE.	SECTION	COUNTY	TOTAL SHEETS	SHEET NO.
	SEAL COAT 2011		5	4
CONTRACT NO. 72E20				
ILLINOIS FED. AID PROJECT				
LOGAN & SCHUYLER				



Maintenance Facility in Lincoln

FILE NAME =
 c:\pw\work\p\dot\loughlin\l\0253722\0672E20-sht-details.dgn

USER NAME = loughlin
 PLOT SCALE = 80.0000' / in.
 PLOT DATE = Feb-08-2011 09:39:17AM

DESIGNED -
 DRAWN -
 CHECKED -
 DATE -

REVISED -
 REVISED -
 REVISED -
 REVISED -

**STATE OF ILLINOIS
 DEPARTMENT OF TRANSPORTATION**

SCALE: SHEET NO. OF SHEETS STA. TO STA.

F.A. RTE.	SECTION	COUNTY	TOTAL SHEETS	SHEET NO.
	SEAL COAT 2011	*	5	5
CONTRACT NO. 72E20				
ILLINOIS FED. AID PROJECT				