

F.A.P. RTE.	SECTION	COUNTY	TOTAL SHEETS	SHEET NO.
322	(26-2)RS-2	Fayette	11	1
		ILLINOIS	CONTRACT NO. 74459	

STATE OF ILLINOIS
DEPARTMENT OF TRANSPORTATION
DIVISION OF HIGHWAYS

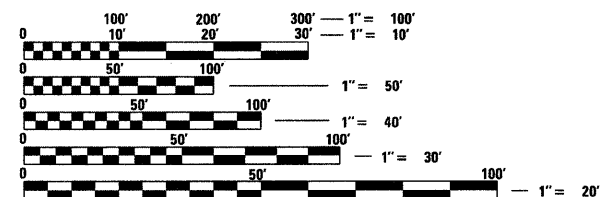
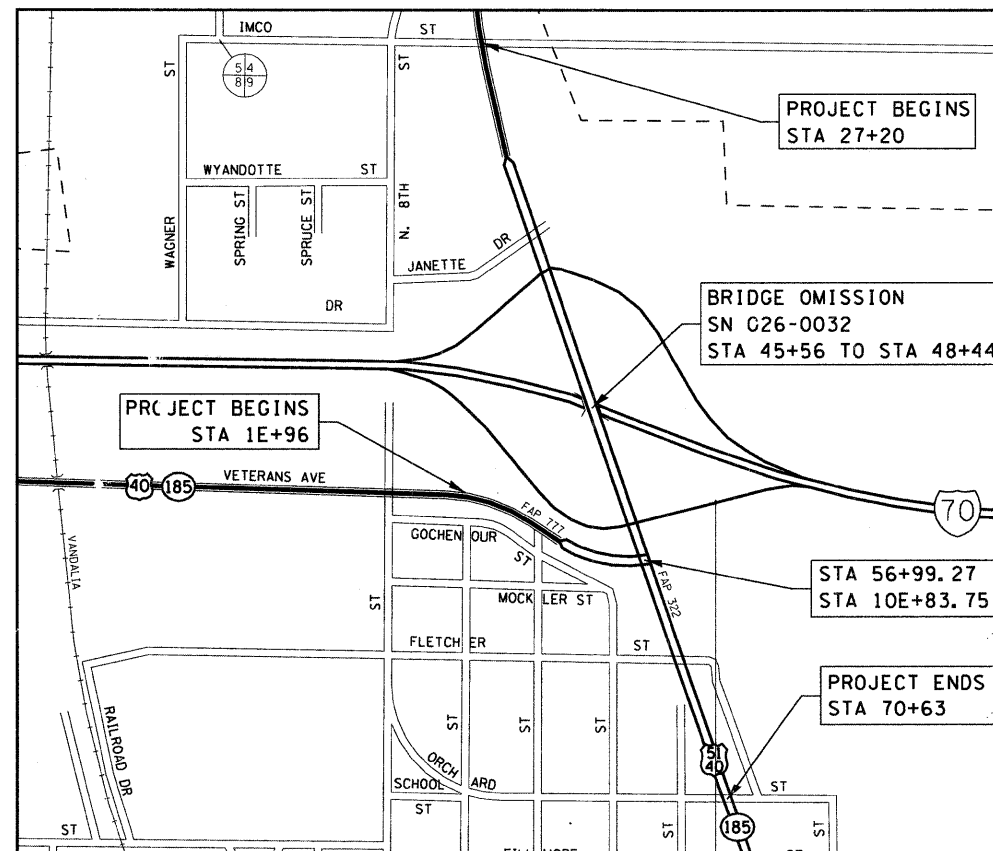
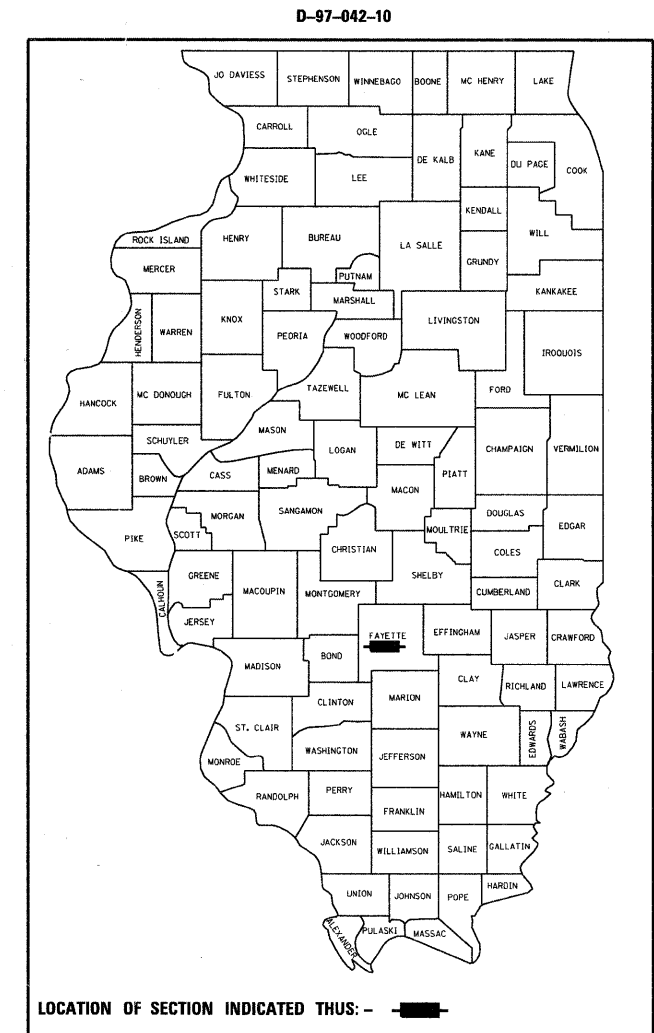
PROPOSED
HIGHWAY PLANS

FAP ROUTE 322 (US 51)
SECTION (26-2)RS-2
PROJECT ACF-0322(094)
BITUMINOUS RESURFACING
FAYETTE COUNTY

C-97-010-10

FOR INDEX OF SHEETS, SEE SHEET NO. 2

ADT (2009) = 7,000



FULL SIZE PLANS HAVE BEEN PREPARED USING STANDARD ENGINEERING SCALES. REDUCED SIZED PLANS WILL NOT CONFORM TO STANDARD SCALES. IN MAKING MEASUREMENTS ON REDUCED PLANS, THE ABOVE SCALES MAY BE USED.

J.U.L.I.E.
 JOINT UTILITY LOCATION INFORMATION FOR EXCAVATION
 1-800-892-0123
 OR 811

PROJECT ENGINEER: MARK DAUGHERTY
PROJECT MANAGER: BRIAN BIERMAN

CONTRACT NO. 74459

GROSS LENGTH = 5,231 FT. = 0.99 MILE
 NET LENGTH = 4,943 FT. = 0.94 MILE

STATE OF ILLINOIS
 DEPARTMENT OF TRANSPORTATION
 DIVISION OF HIGHWAYS

SUBMITTED Feb 10 2011
Gary J. Dunkel
 DEPUTY DIRECTOR OF HIGHWAYS, REGION ENGINEER

March 05 2011
Scott E. Stitt, P.E.
 ENGINEER OF DESIGN AND ENVIRONMENT

March 05 2011
Christine M. Reed
 DIRECTOR OF HIGHWAYS, CHIEF ENGINEER

PRINTED BY THE AUTHORITY
OF THE STATE OF ILLINOIS