

GENERAL NOTES

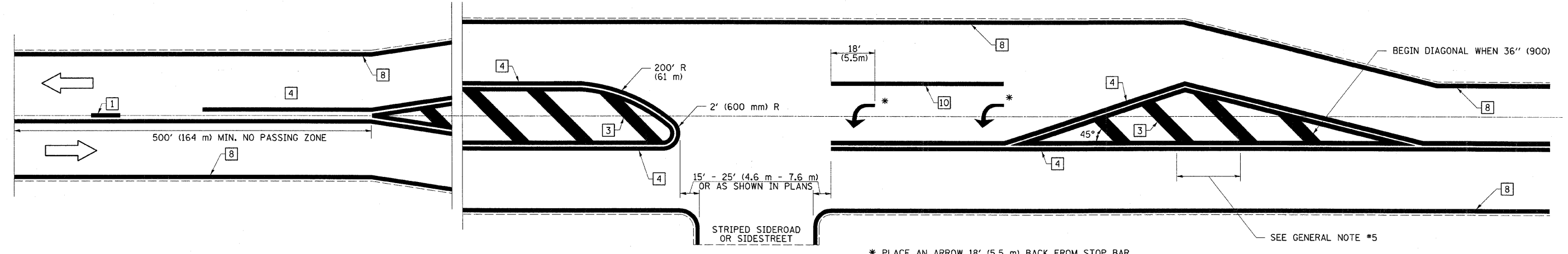
1. RAISED AND CORRUGATED MEDIANS SHALL BE OUTLINED WITH [2] IF PRESENT.
2. SOME OF THE INFORMATION INCLUDED WITH THIS DETAIL MAY NOT BE APPLICABLE TO THIS IMPROVEMENT.
3. PAVEMENT MARKINGS ARE TO BE EXTENDED THROUGH OMISSIONS WHEN APPLICABLE.
4. FINAL PAVEMENT MARKINGS SHALL BE IN PLACE PRIOR TO PLACING ANY RAISED REFLECTIVE PAVEMENT MARKERS.
5. THE FOLLOWING CRITERIA SHALL BE USED FOR SELECTING THE DIAGONAL PAVEMENT MARKING SPACING:

< 30 MPH (< 50 km/h)	15' (4.5 m)
30-45 MPH (50-75 km/h)	20' (6.0 m)
> 45 MPH (> 75 km/h)	30' (9.0 m)

PAVEMENT MARKING LEGEND

- [1] 4" (100) SKIP-DASH (YELLOW)
- [2] 4" (100) SOLID (YELLOW)
- [3] 12" (300) DIAGONAL (YELLOW)
- [4] 4" (100) DOUBLE YELLOW (NARROW)
- [5] RESERVED
- [6] RESERVED
- [7] 6" (150) SKIP-DASH (WHITE)
- [8] 4" (100) SOLID (WHITE)
- [9] 12" (300) DIAGONAL (WHITE)
- [10] 6" (150) SOLID (WHITE)
- [11] 24" (600) STOP BAR (WHITE)
- [12] 8" (200) SOLID (WHITE)
- [13] 6" (100) LANE LINE EXTENSIONS
- [14] 4" (100) PARKING WHITE

RURAL LEFT TURN STRIPING



* PLACE AN ARROW 18' (5.5 m) BACK FROM STOP BAR. PLACE ANOTHER ARROW EVEN WITH THE BEGINNING OF THE SOLID WHITE LINE. SPACE ADDITIONAL ARROWS EVENLY UP TO 80' (24.4 m) MAXIMUM SPACING. USE MINIMUM OF 2 ARROWS.

NOT TO SCALE

Note: All dimensions are in INCHES (millimeters) unless otherwise shown.

FILE NAME =	USER NAME = swartzw	DESIGNED -	REVISED -	STATE OF ILLINOIS DEPARTMENT OF TRANSPORTATION	PAVEMENT MARKING AND RAISED REFLECTIVE PAVEMENT MARKERS (RURAL & URBAN APPLICATIONS)	F.A.P. RTE.	SECTION	COUNTY	TOTAL SHEETS	SHEET NO.	
ca:\pwork\pwork\swartzw\d0209308\vd77485-sht-details.dgn	PLOT SCALE = 50,0000 1/16"	DRAWN -	REVISED -			821	D7 BRIDGE REPAIRS 2011-1	WAYNE	23	22	
	PLOT DATE = 2/3/2011	CHECKED -	REVISED -			CONTRACT NO. 74485					
		DATE -	REVISED -			ILLINOIS FED. AID PROJECT					