

STATE OF ILLINOIS  
 DEPARTMENT OF TRANSPORTATION  
 DIVISION OF HIGHWAYS

**PROPOSED  
 HIGHWAY PLANS**

FAP ROUTE 832 (IL 49)  
 SECTION D7 BRIDGE REPAIRS 2011-4

BRIDGE REPAIRS  
 CLARK COUNTY

C-97-145-10

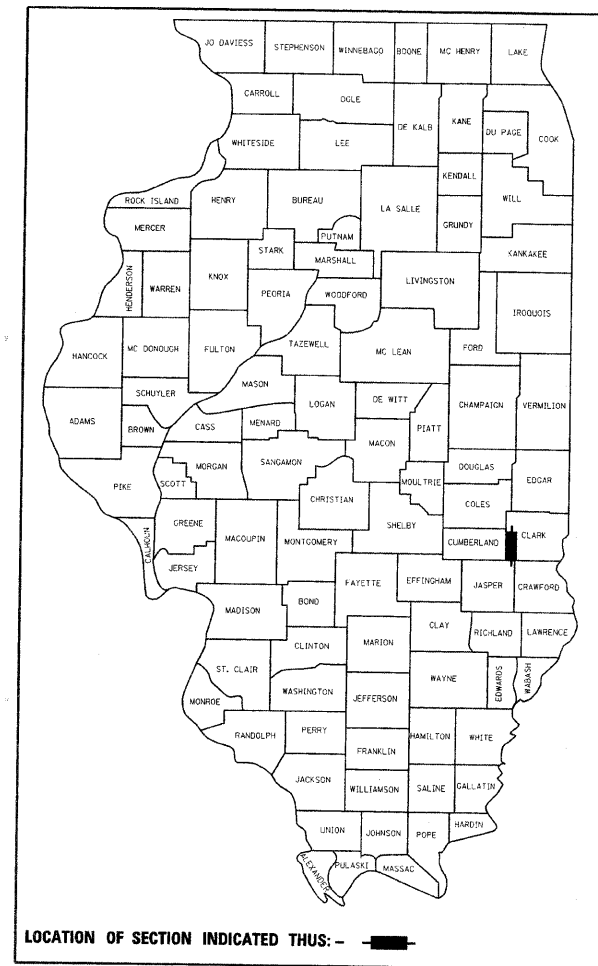
F.A.P. RTE.	SECTION	COUNTY	TOTAL SHEETS	SHEET NO.
832	*	Clark	31	1
		ILLINOIS	CONTRACT NO. 74494	

\*D7 Bridge Repairs 2011-4

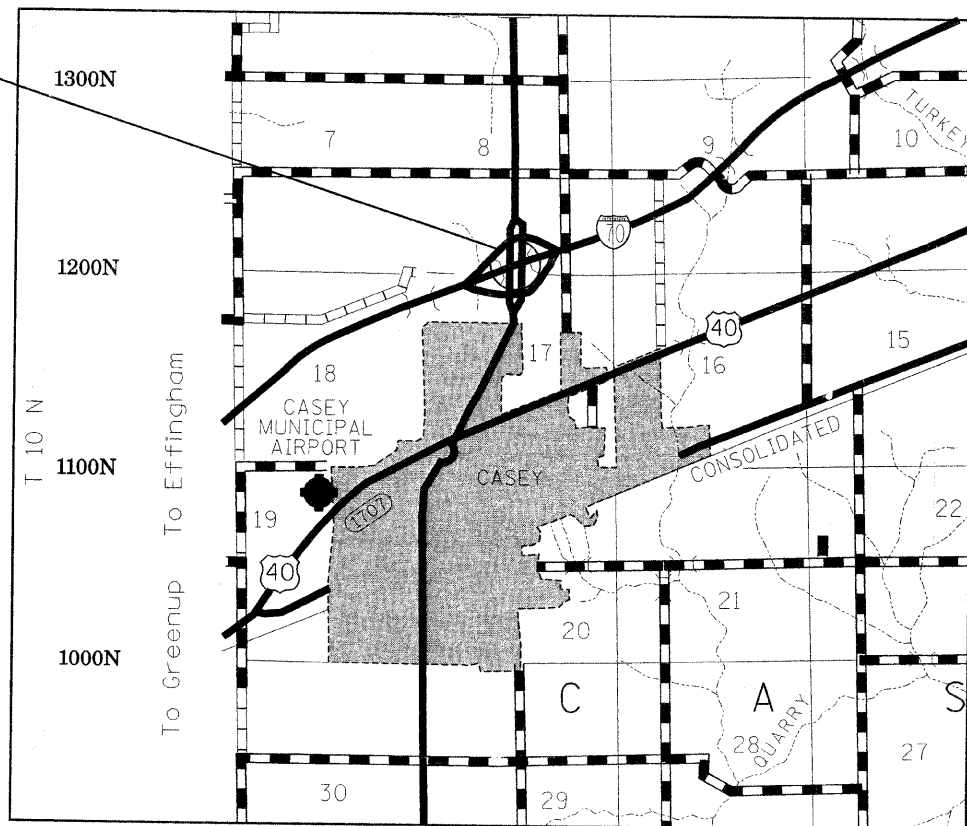
D-97-077-10

FOR INDEX OF SHEETS, SEE SHEET NO. 2

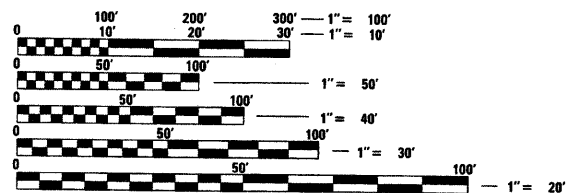
ADT (2009) = 5600



LOCATION OF PROPOSED IMPROVEMENT



GROSS LENGTH = x.xx FT. = x.xxx MILE  
 NET LENGTH = x.xx FT. = x.xxx MILE



FULL SIZE PLANS HAVE BEEN PREPARED USING STANDARD ENGINEERING SCALES. REDUCED SIZED PLANS WILL NOT CONFORM TO STANDARD SCALES. IN MAKING MEASUREMENTS ON REDUCED PLANS, THE ABOVE SCALES MAY BE USED.

J.U.L.I.E.  
 JOINT UTILITY LOCATION INFORMATION FOR EXCAVATION  
 1-800-892-0123  
 OR 811

PROJECT ENGINEER: MARK DAUGHERTY  
 PROJECT MANAGER: BRIAN LEWIS

CONTRACT NO. 74494

STATE OF ILLINOIS  
 DEPARTMENT OF TRANSPORTATION  
 DIVISION OF HIGHWAYS

SUBMITTED Feb 16 20 11  
Roger A. Driskell / maw  
 DEPUTY DIRECTOR OF HIGHWAYS, REGION ENGINEER

March 05 20 11  
Scott E. Stett, P.E. / a  
 Acting ENGINEER OF DESIGN AND ENVIRONMENT

March 05 20 11  
Christine M. Reed / a  
 DIRECTOR OF HIGHWAYS, CHIEF ENGINEER

**PRINTED BY THE AUTHORITY  
 OF THE STATE OF ILLINOIS**