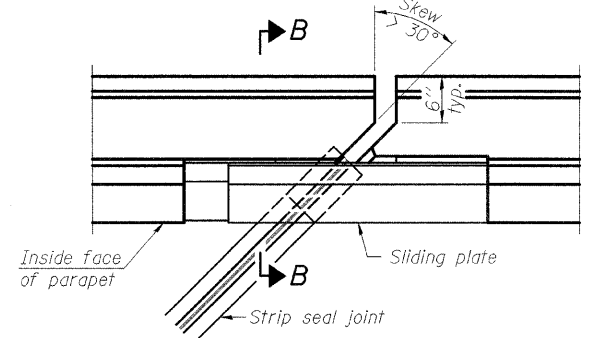
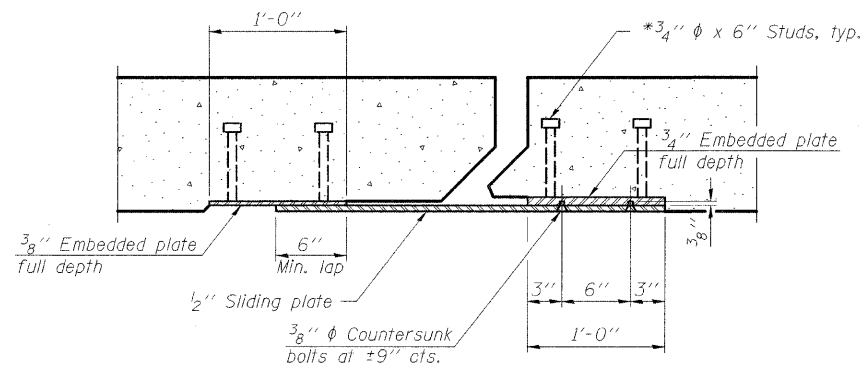


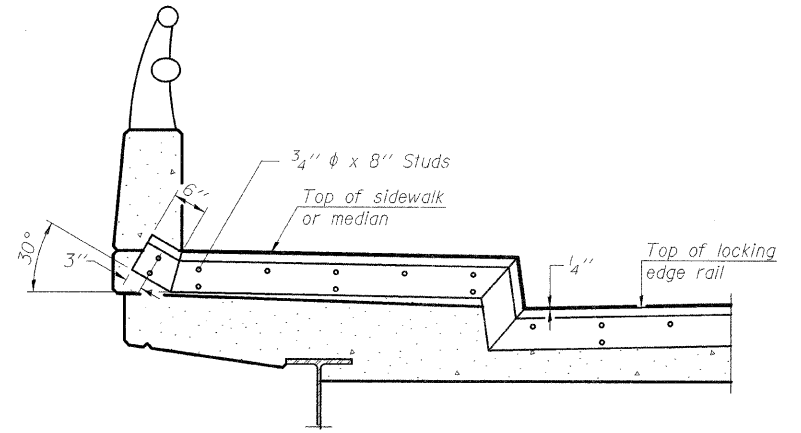
PLAN
(For skews $\le 30^\circ$)



PLAN
(For skews $> 30^\circ$)
Showing point block

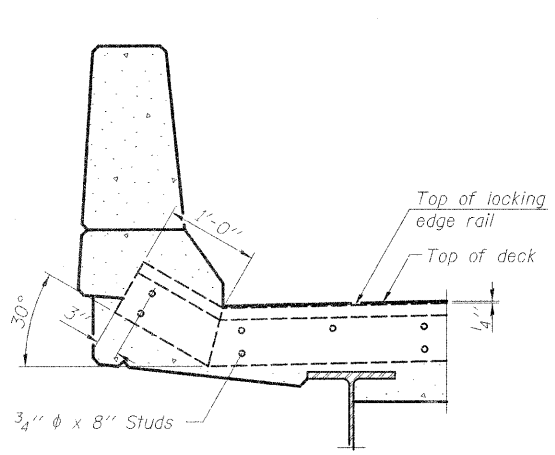


SECTION C-C

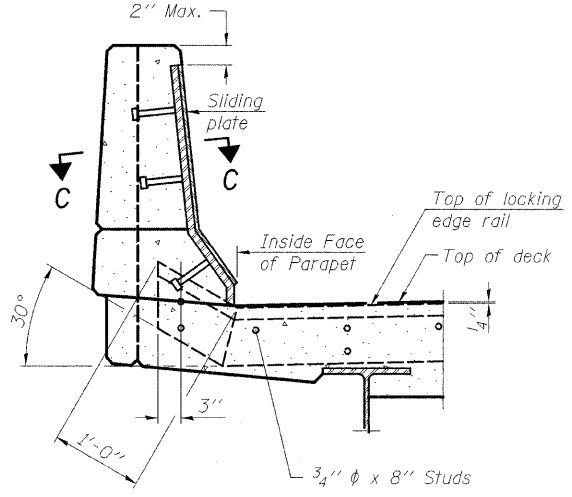


TYPICAL END TREATMENT AT SIDEWALK OR MEDIAN

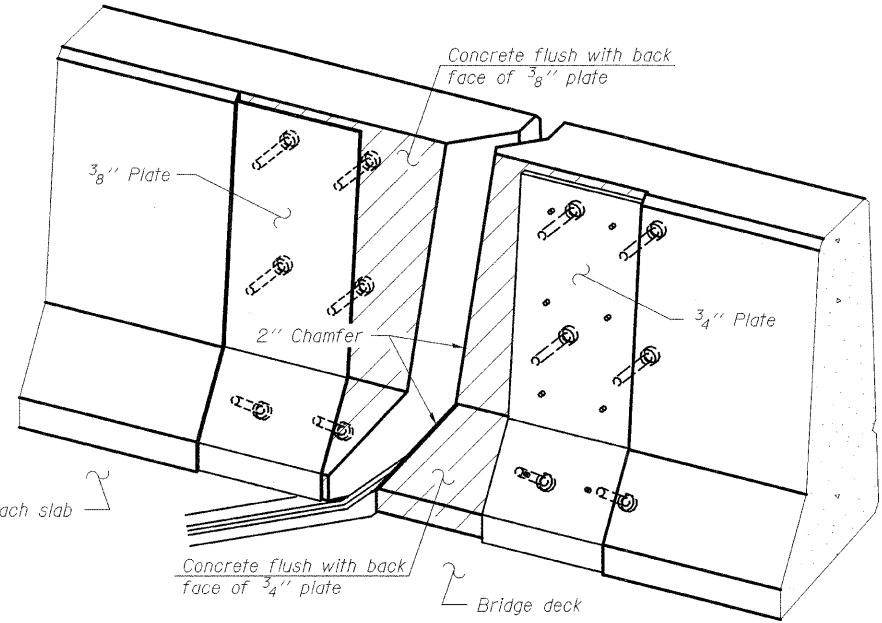
Shorter plates with a single row of studs at 12" cts. may be necessary on medians which are shallower than 9". See manufacturer's recommendation.



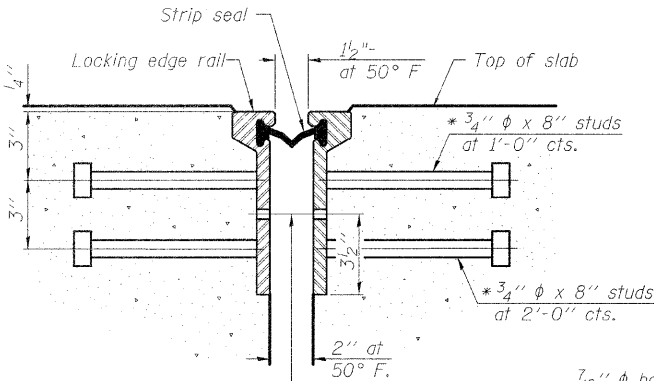
SECTION A-A



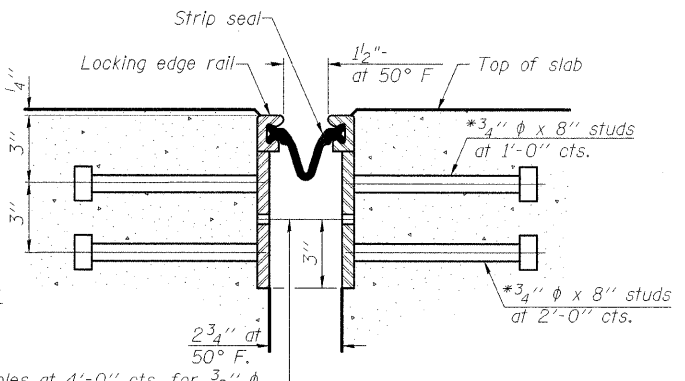
SECTION B-B



TRIMETRIC VIEW
(Showing back plates only)



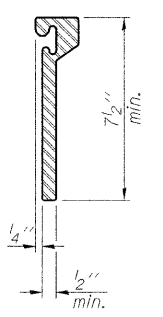
SECTION THRU ROLLED RAIL JOINT



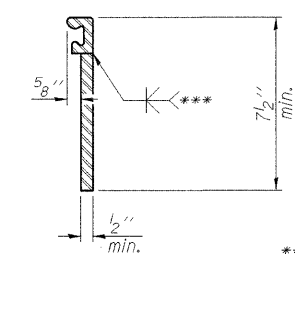
SECTION THRU WELDED RAIL JOINT

7/16" ϕ holes at 4'-0" cts. for 3/8" ϕ bolts. All bolts shall be burned, sawed, or chipped off flush with the plates after forms are removed, typ.

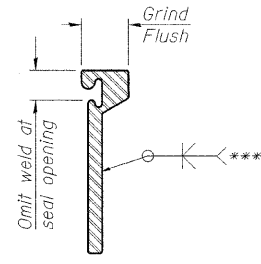
7/16" ϕ holes at 4'-0" cts. for 3/8" ϕ bolts. All bolts shall be burned, sawed, or chipped off flush with the plates after forms are removed, typ.



ROLLED EXTRUDED RAIL



WELDED RAIL



LOCKING EDGE RAIL SPLICE

*** Back gouge not required if complete joint penetration is verified by mock-up.

The inside of the locking edge rail groove shall be free of weld residue.
Rolled rail shown, welded rail similar.

LOCKING EDGE RAILS

BILL OF MATERIAL

Item	Unit	Total
Preformed Joint Strip Seal	Foot	170.0

* Granular or solid flux filled headed studs conforming to Article 1006.32 of the Std. Specs., automatically end welded.

EJ-SSJ 7-1-10

FILE NAME =	USER NAME = teasleyck	DESIGNED - KLB	REVISED -	STATE OF ILLINOIS DEPARTMENT OF TRANSPORTATION	PREFORMED JOINT STRIP SEAL STRUCTURE NO. 012-0048	F.A.P. RTE. 832	SECTION *	COUNTY Clark	TOTAL SHEETS 31	SHEET NO. 27	
CONTRACT NO. 74494	DATE - 12/07/2010	CHECKED - MEA	REVISED -			SCALE:	SHEET NO. 8 OF 10 SHEETS	STA.	TO STA.	ILLINOIS FED. AID PROJECT	
4494-sht-br details-0120048.dgn		DRAWN - KLB	REVISED -								
PLOT SCALE = 20.0000 "/> <td></td> <td></td> <td></td> <td></td> <td></td> <td></td> <td></td> <td></td> <td></td>											