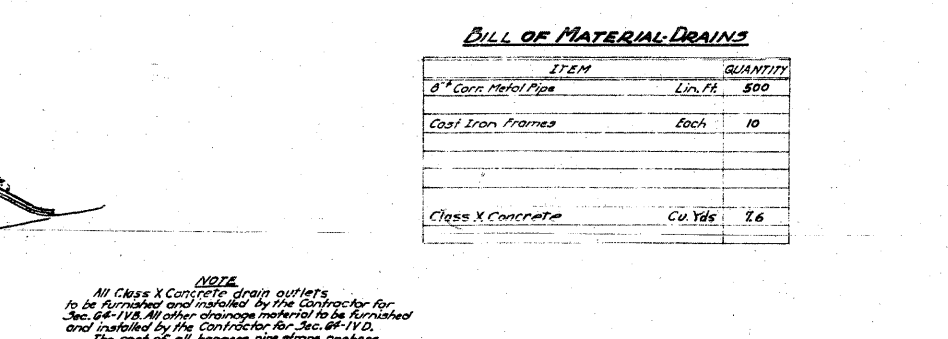
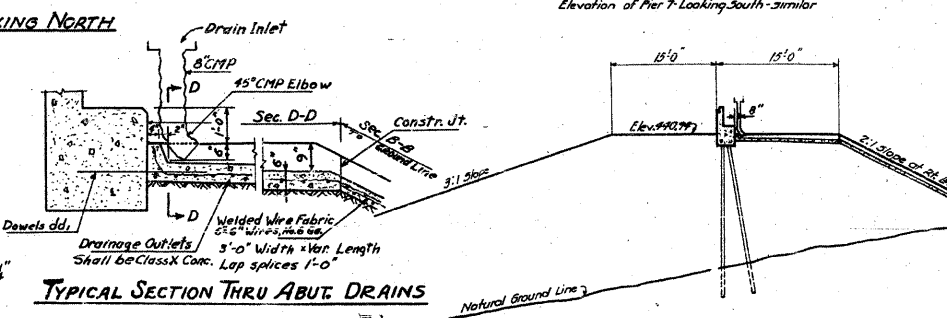
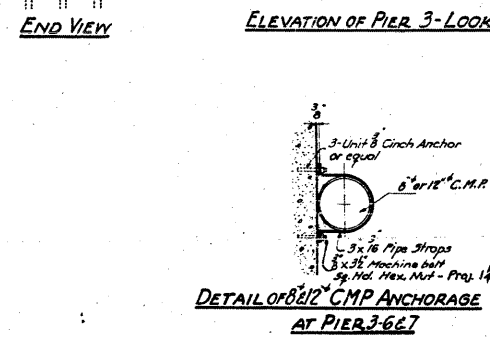
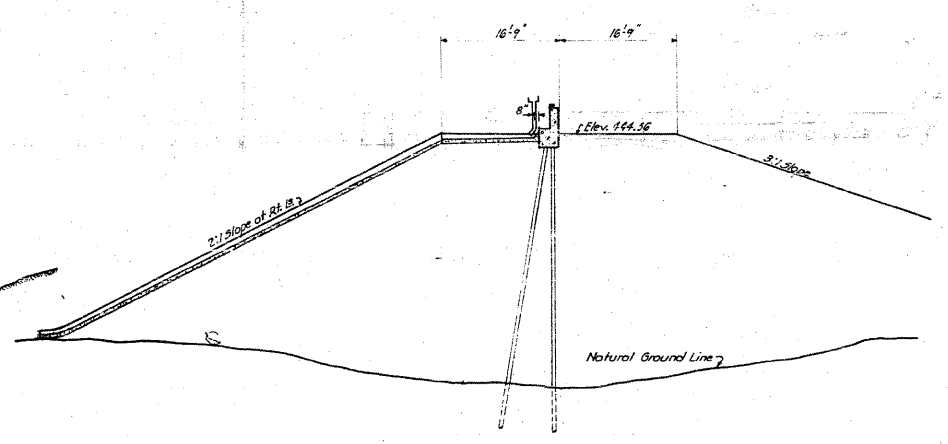
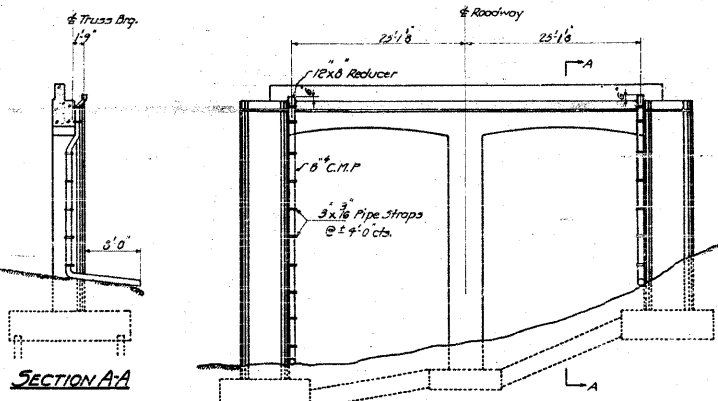
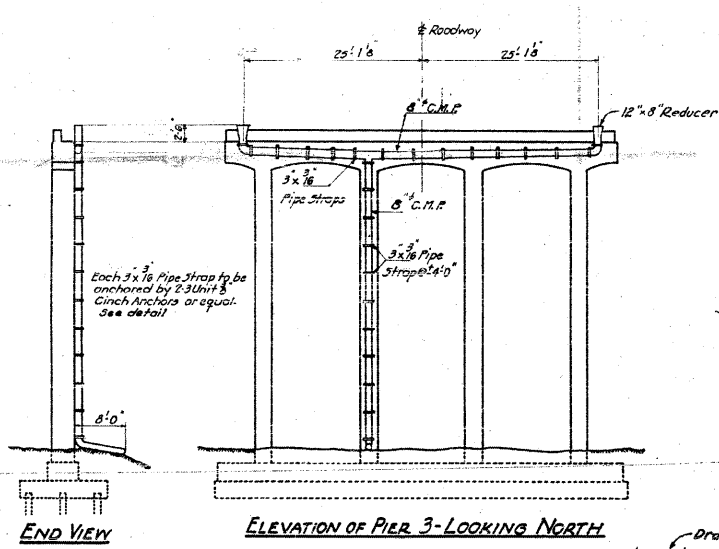
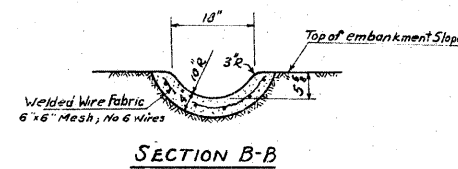
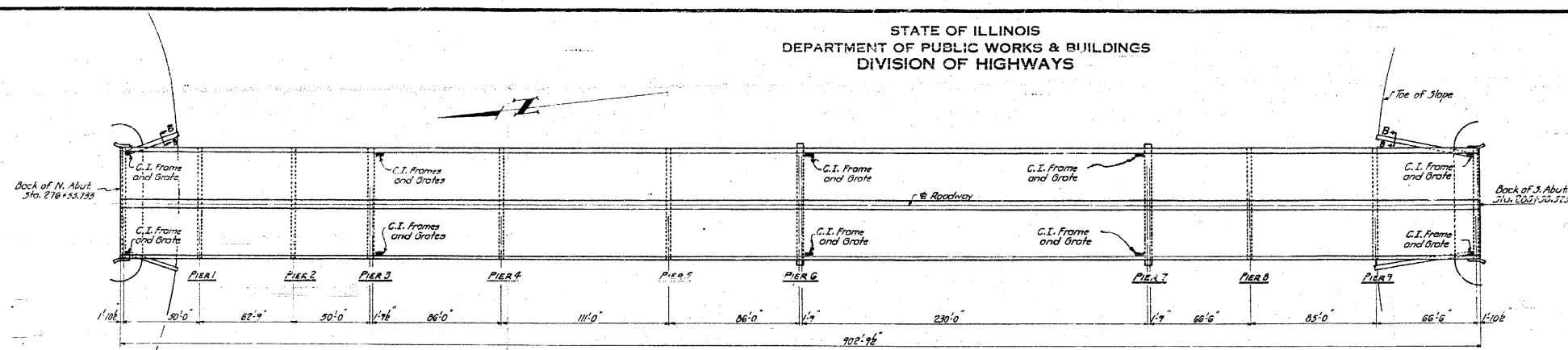


STATE OF ILLINOIS
DEPARTMENT OF PUBLIC WORKS & BUILDINGS
DIVISION OF HIGHWAYS

ROAD DISTRICT	SECTION	COUNTY	TOTAL SHEETS	SHEET NO.
4	64-IVBR-102	St. Clair	26	25
SHEET NO. 18 30 SHEETS				



BILL OF MATERIAL-DRAINS

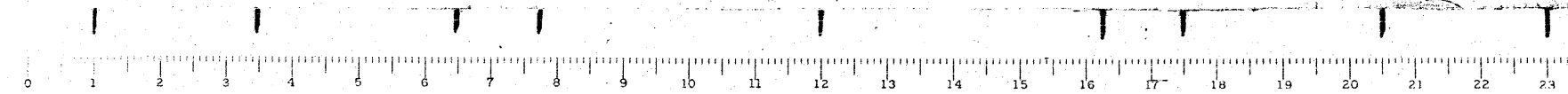
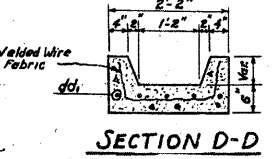
ITEM	QUANTITY
8" Cor. Metal Pipe	Lin. Ft. 500
Cast Iron Frames	Each 10
Class X Concrete	Cu. Yds. 7.6

NOTE:
All Class X Concrete drain outlets to be furnished and installed by the Contractor for Sec. 64-IVB. All other drainage material to be furnished and installed by the Contractor for Sec. 64-IV D. The cost of all hangers, pipe straps, anchors, blocks, reducers and admission to be included in the cost of corrugated metal pipe. The cost of all 6" C.M.P. shall be included in the cost of Class X Concrete - Sec. 64-IV D. The cost of welded wire fabric shall be included in the unit price bid for Class X Concrete.

**DECK DRAINAGE
GRADE SEPARATION
MISSOURI PACIFIC R.R.
NORTH OF DUFO
E.A. ROUTE 4 - SEC. 64-IVBD
ST. CLAIR COUNTY**

STANDARD	COMPUTED <i>W.F. Wilson</i>
	CHECKED <i>W.H. Sommer</i>
	DRAWN <i>W.F.W. Miller</i>
	CHECKED <i>W.F.W.</i>
SPECIAL	ASSEMBLED
	CHECKED

EXAMINED *B-10 10-5-54*
W.E. Hanson
ENGINEER OF BRIDGE AND TRAFFIC STRUCTURES
PASSED *[Signature]*
APPROVED *[Signature]*
SUPERVISOR OF BRIDGE



CB Coombe-Bloxdorf P.C.
- CIVIL ENGINEERS -
- STRUCTURAL ENGINEERS -
- LAND SURVEYORS -
Design Firm License No. 184-002703