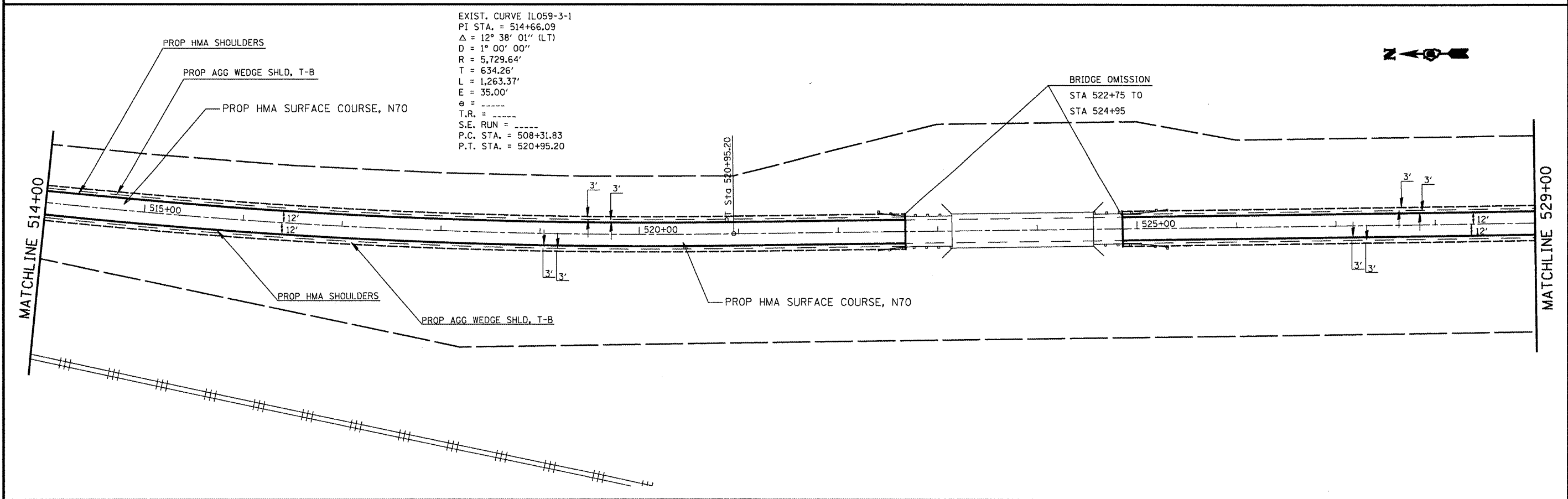


EXIST. CURVE IL059-3-1
 PI STA. = 514+66.09
 $\Delta = 12^\circ 38' 01''$ (LT)
 $D = 1^\circ 00' 00''$
 $R = 5,729.64'$
 $T = 634.26'$
 $L = 1,263.37'$
 $E = 35.00'$
 $\theta = \text{-----}$
 $T.R. = \text{-----}$
 $S.E. RUN = \text{-----}$
 $P.C. STA. = 508+31.83$
 $P.T. STA. = 520+95.20$



EXIST. CURVE IL059-3-1
 PI STA. = 514+66.09
 $\Delta = 12^\circ 38' 01''$ (LT)
 $D = 1^\circ 00' 00''$
 $R = 5,729.64'$
 $T = 634.26'$
 $L = 1,263.37'$
 $E = 35.00'$
 $\theta = \text{-----}$
 $T.R. = \text{-----}$
 $S.E. RUN = \text{-----}$
 $P.C. STA. = 508+31.83$
 $P.T. STA. = 520+95.20$

FILE NAME =	USER NAME = *USER*	DESIGNED -	REVISD -	STATE OF ILLINOIS DEPARTMENT OF TRANSPORTATION	PLAN VIEW	F.A.P. RTE.	SECTION	COUNTY	TOTAL SHEETS	SHEET NO.	
FILEL		DRAWN -	REVISD -			322	(24,25) RS-3	MARION	27	8	
PLOT SCALE = *SCALE*		CHECKED -	REVISD -			SCALE: 50			SHEET NO. 8 OF 27 SHEETS STA. 499+00 TO STA. 529+00		
PLOT DATE = *DATE*		DATE -	REVISD -			CONTRACT NO. 76B76 FED. ROAD DIST. NO. ILLINOIS FED. AID PROJECT					