

STATE OF ILLINOIS  
DEPARTMENT OF TRANSPORTATION  
DIVISION OF HIGHWAYS

**PROPOSED  
HIGHWAY PLANS**

FAI ROUTE 255 (I-255)  
SECTION 82-7HB-1  
PROJECT: ACIM-255-7(217)021  
BRIDGE JOINT REPAIRS  
ST. CLAIR COUNTY

C-98-107-08

F.A.I. RTE.	SECTION	COUNTY	TOTAL SHEETS	SHEET NO.
255	82-7HB-1	ST. CLAIR	43	1
		ILLINOIS	CONTRACT NO. 76C33	

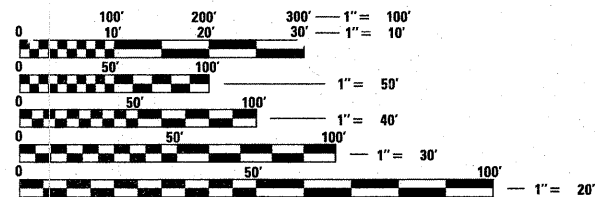
FOR INDEX OF SHEETS, SEE SHEET NO. 2

**DESIGN DESIGNATION**

NA

**ADT**

SN 082-0217 I-255 NB TO IL 3 NB	SN 082-0218 IL 3 SB TO I-255 NB
ADT: 5200 (2008)	ADT: 400 (2008)
ADT: 6500 (2030)	ADT: 500 (2030)
SU%: 1.7%	SU%: 5.0%
MU%: 2.9%	MU%: 5.0%

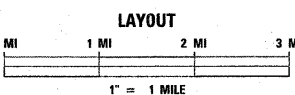
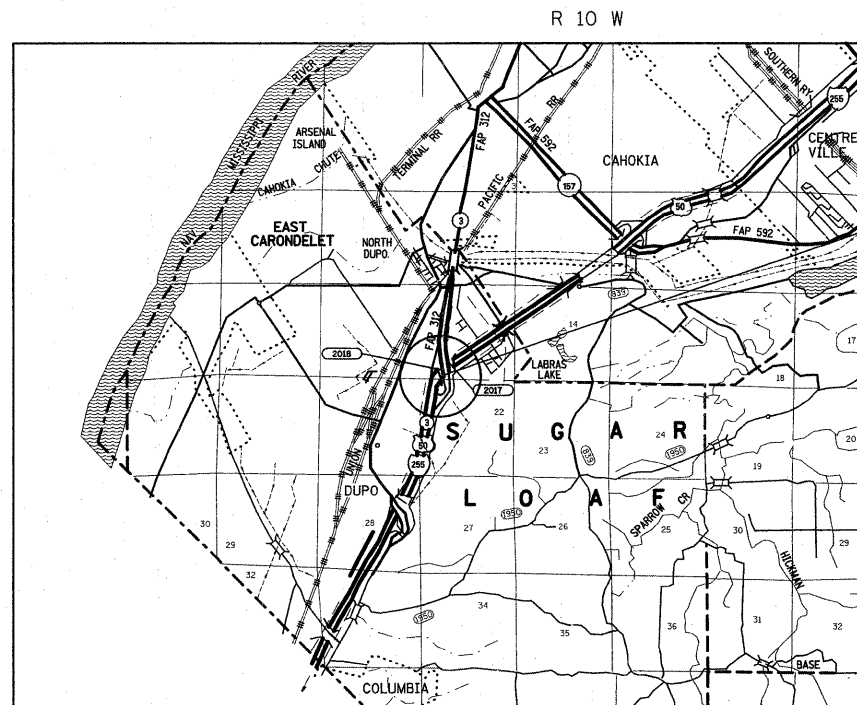


FULL SIZE PLANS HAVE BEEN PREPARED USING STANDARD ENGINEERING SCALES. REDUCED SIZED PLANS WILL NOT CONFORM TO STANDARD SCALES. IN MAKING MEASUREMENTS ON REDUCED PLANS, THE ABOVE SCALES MAY BE USED.

J.U.L.I.E.  
JOINT UTILITY LOCATION INFORMATION FOR EXCAVATION  
1-800-892-0123  
OR 811

PROJECT ENGINEER: PATTI LeBEAU (618) 346-3179  
PROJECT MANAGER: ARTHUR MUEHLFELD (618) 346-3209

CONTRACT NO. 76C33



LATITUDE: 38.5301°  
LONGITUDE: 90.1962°

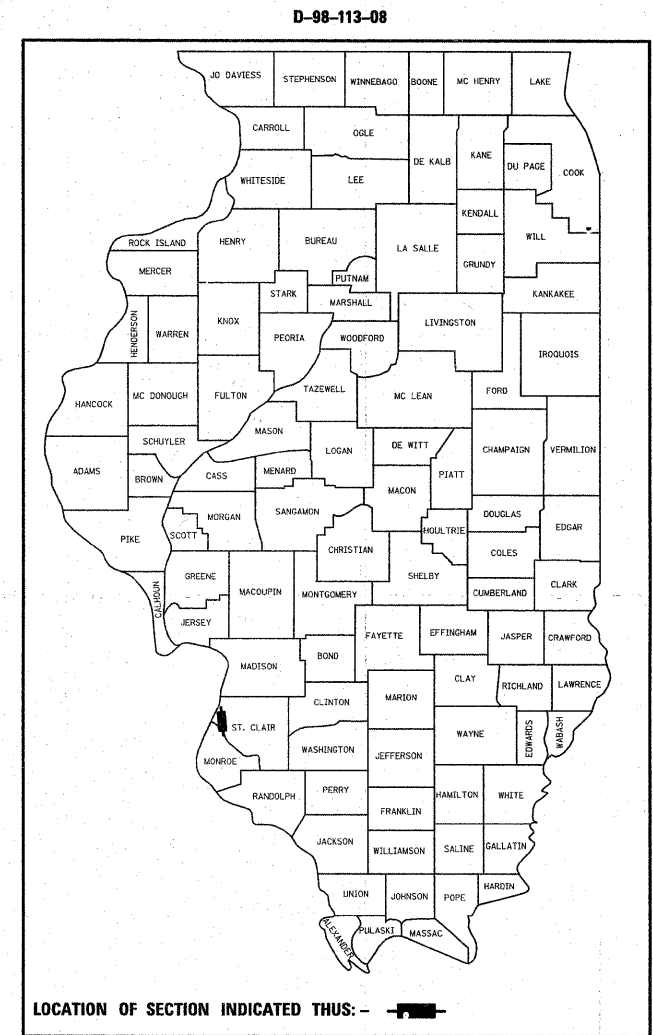
7 SPAN R/C DECK WITH PRECAST DECK PANELS COMPOSITE WITH PLATE GIRDERS OVER I-255

SN 082-0217  
(RAMP E - NB I-255 TO NB IL 3)  
@ STA 48+33.63

SN 082-0218  
(RAMP F - SB IL 3 TO NB I-255)  
@ STA 131+68.03

SN 082-0217 RAMP E  
GROSS LENGTH = 1016.21 FT. = 0.192 MILE

SN 082-0218 RAMP F  
GROSS LENGTH = 1111.13 FT. = 0.210 MILE



LOCATION OF SECTION INDICATED THIS: - [black rectangle] -

STATE OF ILLINOIS  
DEPARTMENT OF TRANSPORTATION  
DIVISION OF HIGHWAYS

SUBMITTED Aug 12 20 2010  
M. C. Ramis  
DEPUTY DIRECTOR OF HIGHWAYS, REGION 5 ENGINEER

October 1 20 10  
Scott E. Stitt, P.E. /s/  
acting ENGINEER OF DESIGN AND ENVIRONMENT

October 1 20 10  
Christine M. Reed /s/  
DIRECTOR OF HIGHWAYS, CHIEF ENGINEER

**PRINTED BY THE AUTHORITY  
OF THE STATE OF ILLINOIS**