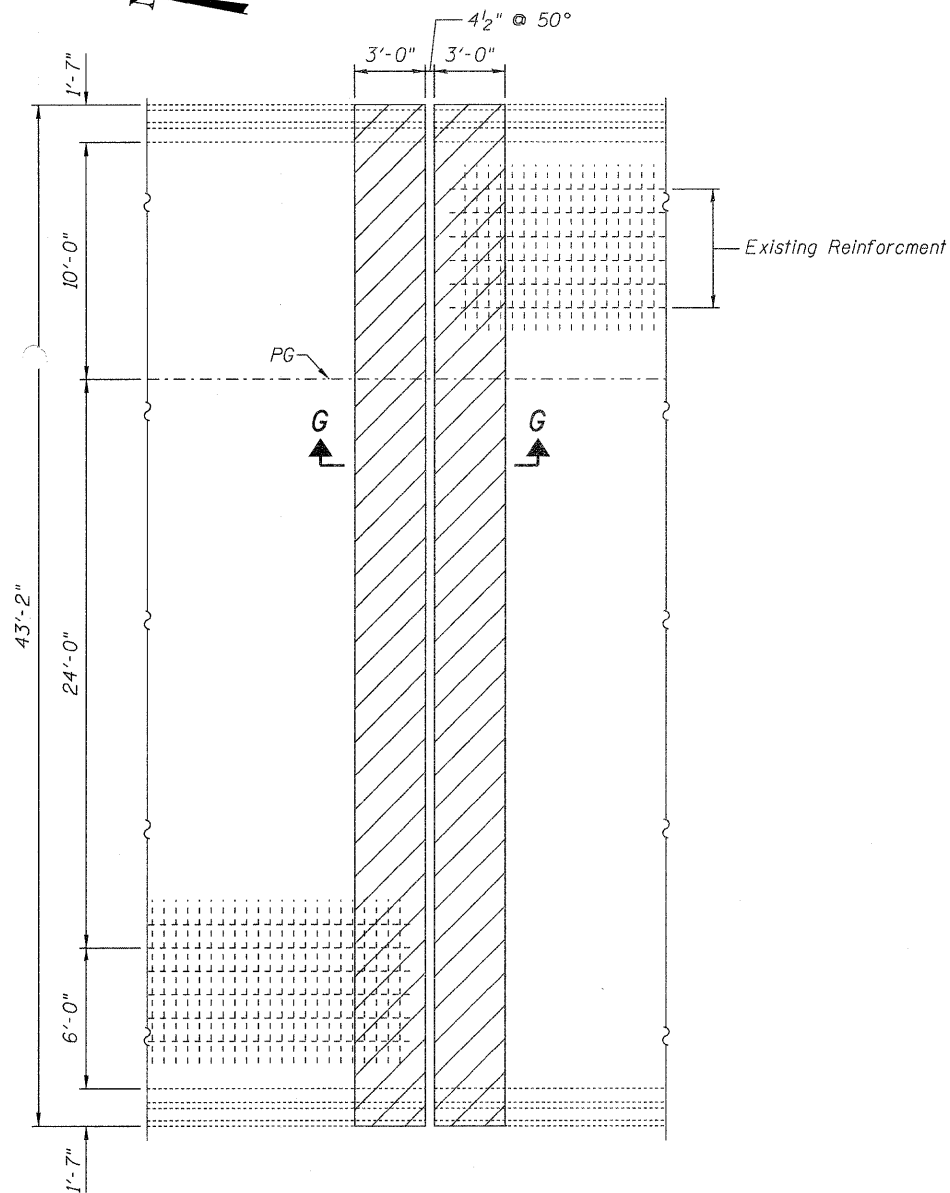
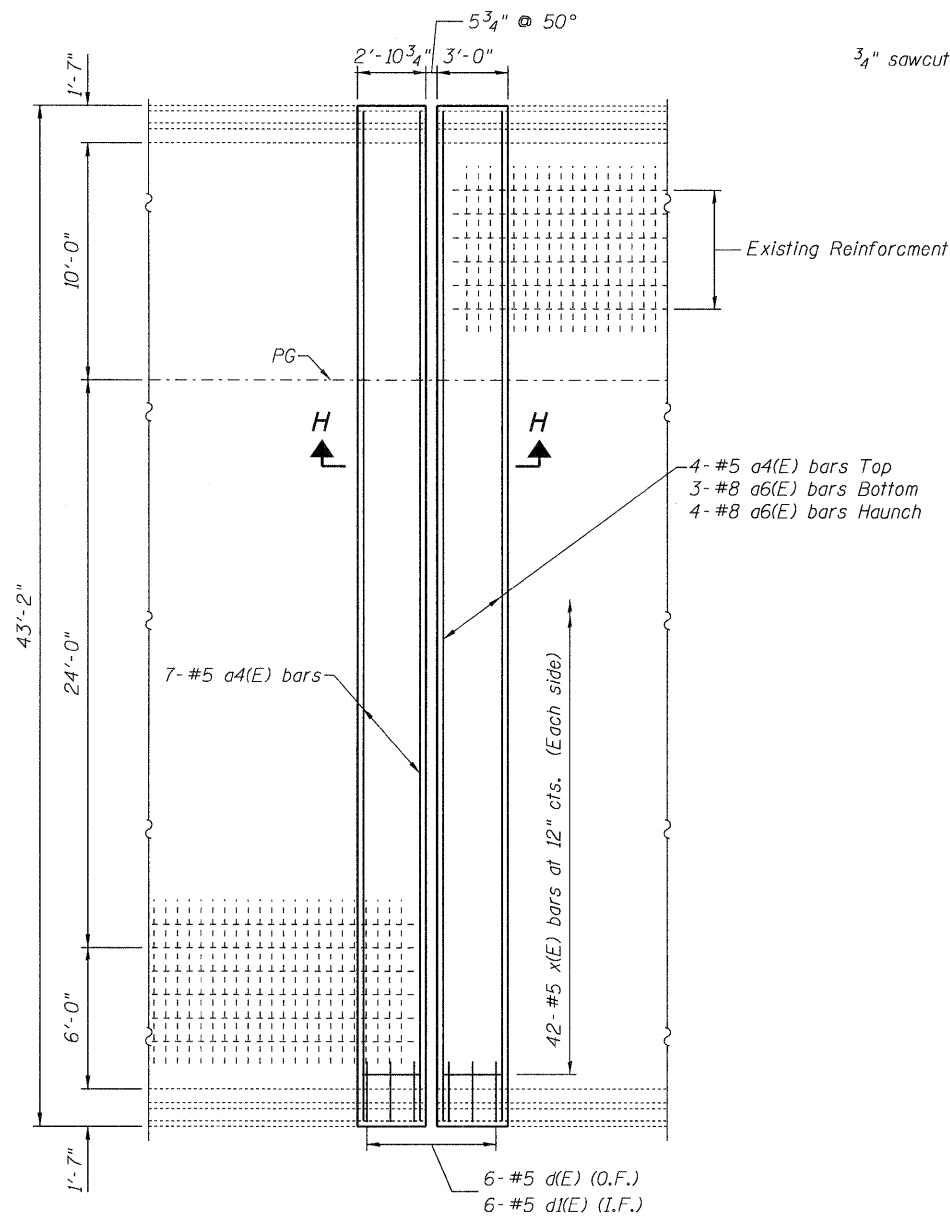


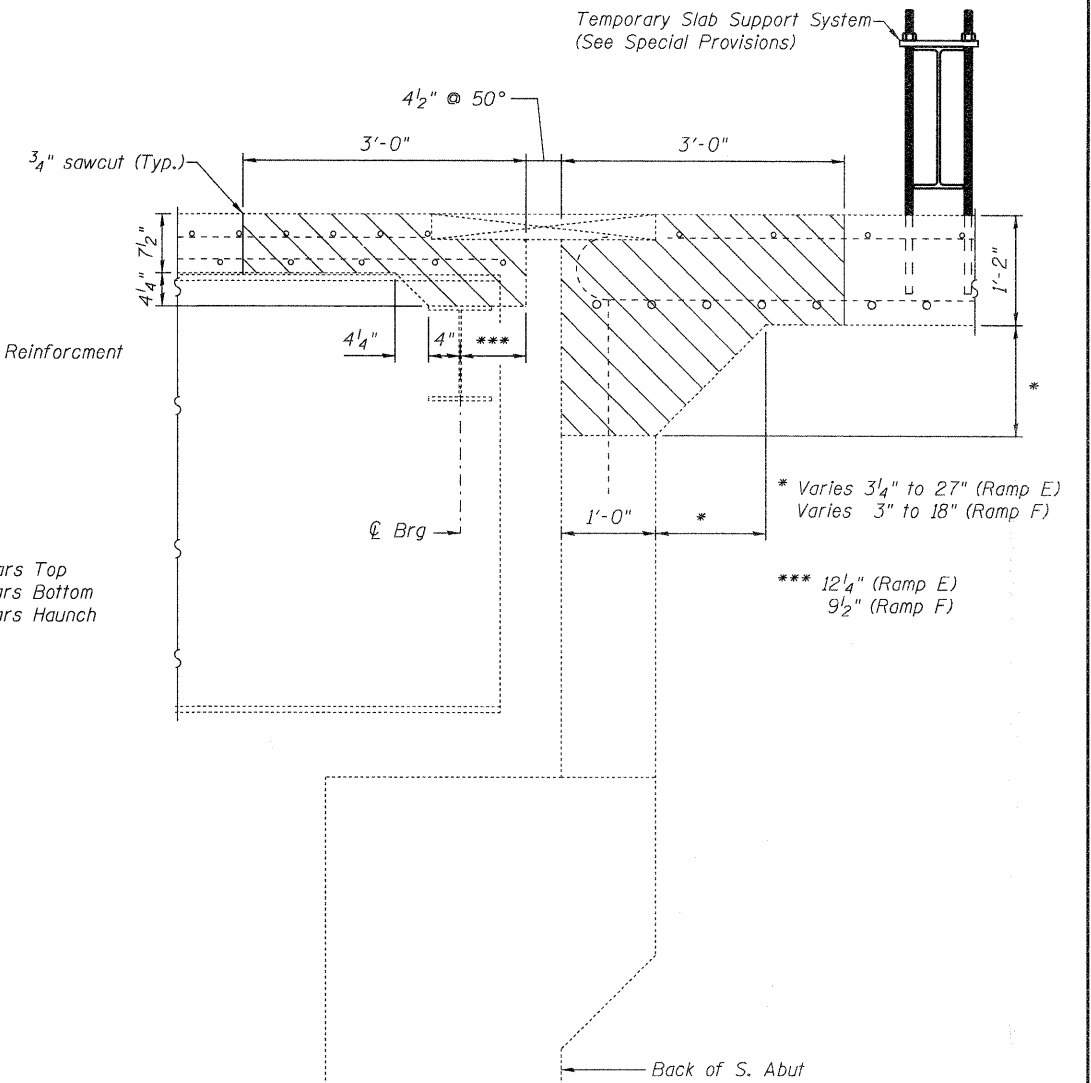
STATE OF ILLINOIS
DEPARTMENT OF TRANSPORTATION



CONCRETE REMOVAL



CONCRETE REPLACEMENT



SECTION G-G

See sheet 15 of 16 for Section H-H.

BILL OF MATERIAL

Bar	No.	Size	Length	Shape
a4(E)	11	#5	41'-2"	—
a6(E)	7	#8	37'-8"	—
d(E)	12	#5	5'-8"	L
d1(E)	12	#5	3'-11"	L
x(E)	84	#5	2'-7"	C
Mechanical Splicers		Each		84
Reinforcement Bars, Epoxy Coated		Pound		1520
Concrete Superstructure		Cu. Yds.		12.5
Concrete Removal		Cu. Yds.		13.3

Bars indicated thus 4x2 - #5 etc. indicates 4 line of bars with 2 lengths per line.

**RAMP E
S. ABUTMENT CONCRETE REPLACEMENT
082-0217 & 0218**

DESIGNED	J. Uehle	November 6, 2010
CHECKED	A. Holloway	
DRAWN	J. Uehle	
CHECKED	A. Holloway	
EXAMINED	<i>J. Cal Long</i> ENGINEER OF STRUCTURAL SERVICES	
PASSED	<i>Ralph E. Anderson</i> ENGINEER OF BRIDGES AND STRUCTURES	

SHEET NO. 7 16 SHEETS	F.A.] RTE.	SECTION	COUNTY	TOTAL SHEETS	SHEET NO.
	255	82-7HB-I	ST. CLAIR	43	14
			CONTRACT NO. 76C33		
ILLINOIS FED. AID PROJECT					