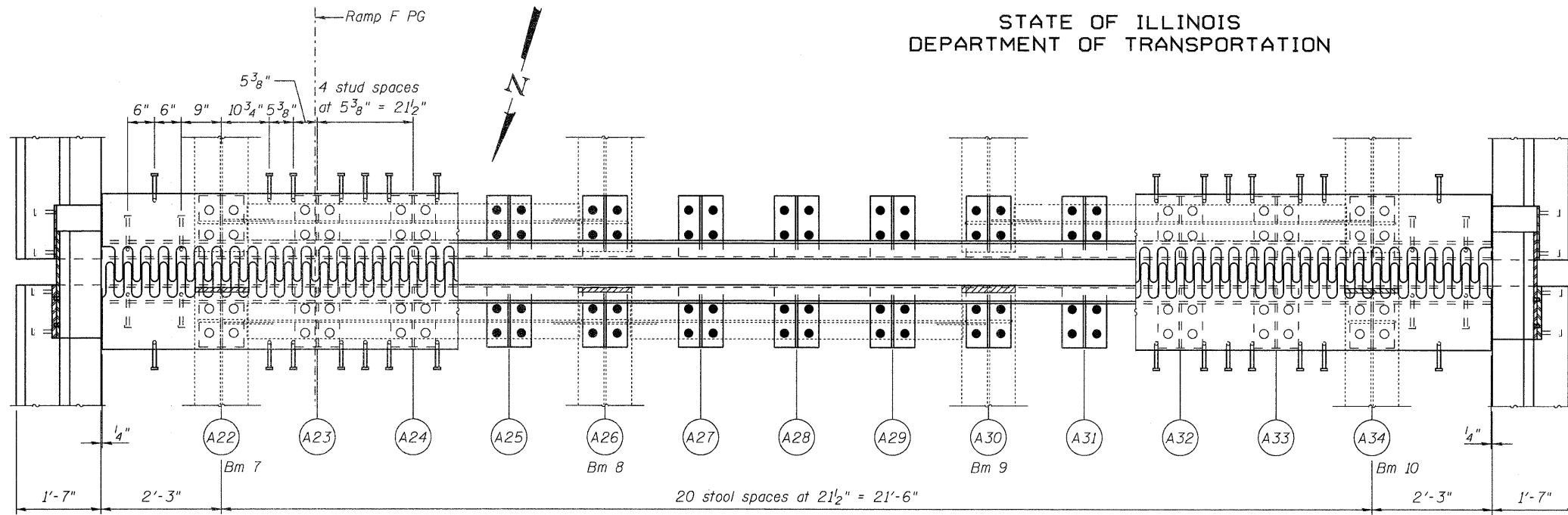
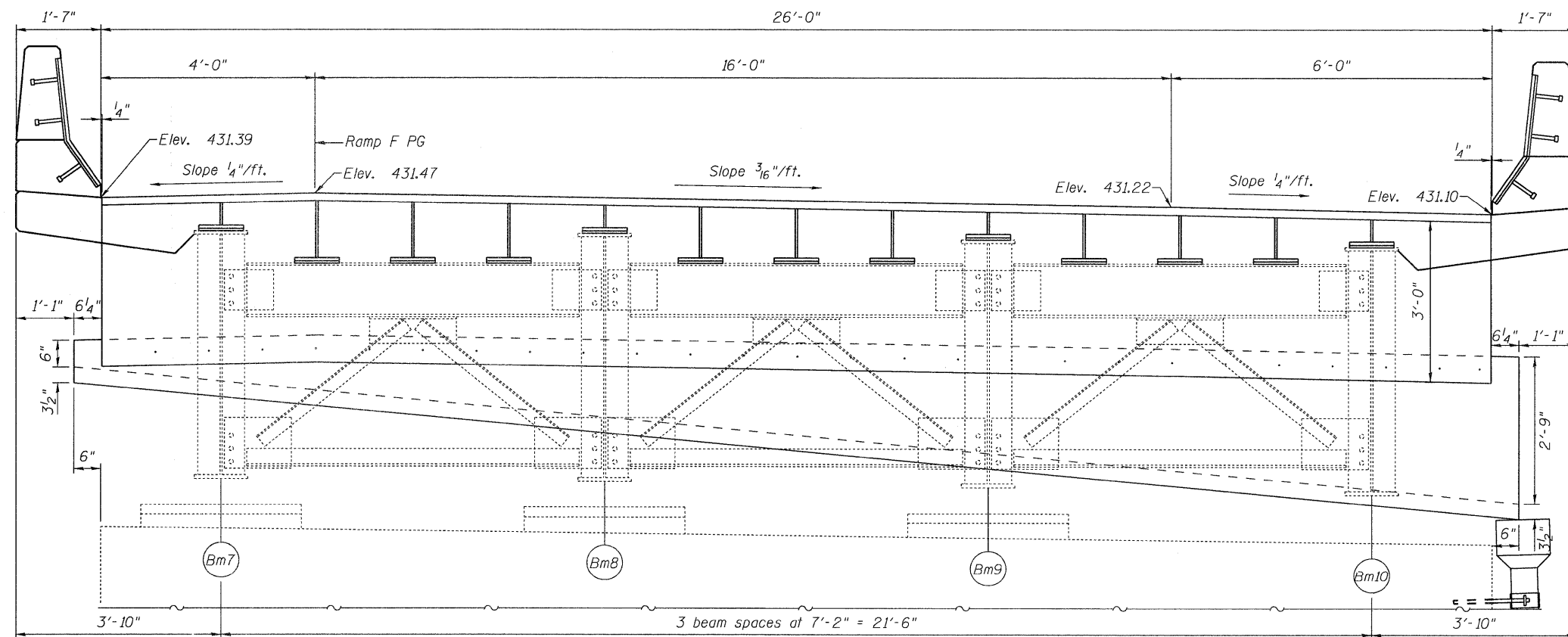


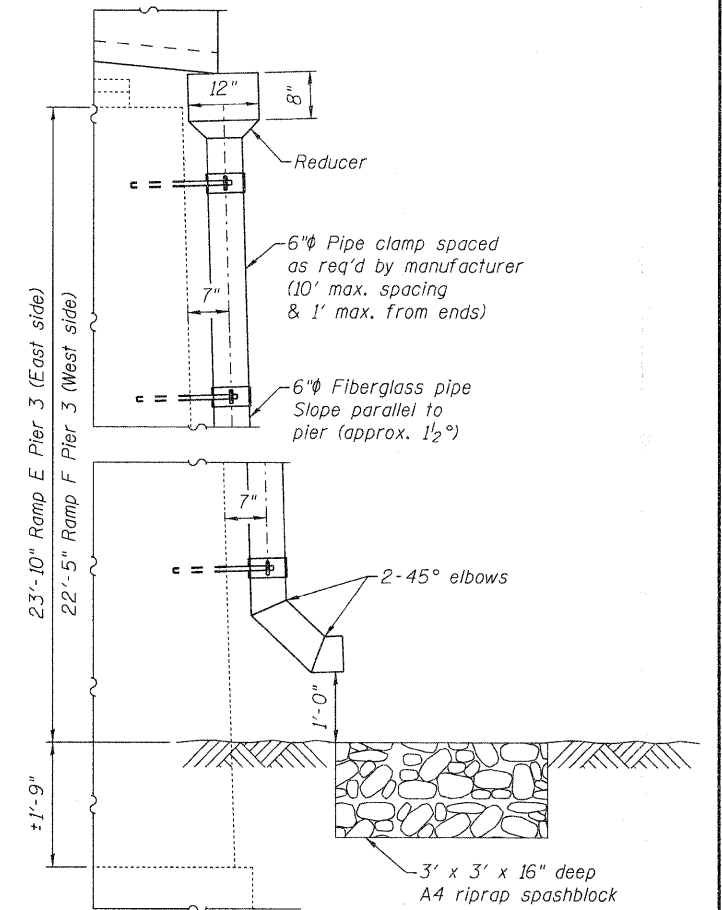
STATE OF ILLINOIS  
DEPARTMENT OF TRANSPORTATION



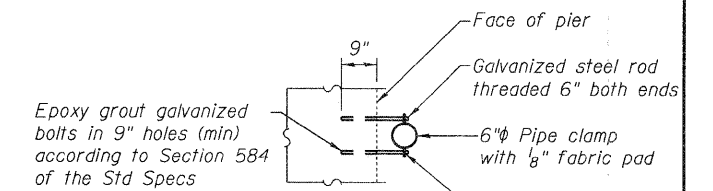
**PLAN**  
(Pier 3 - Ramp F)



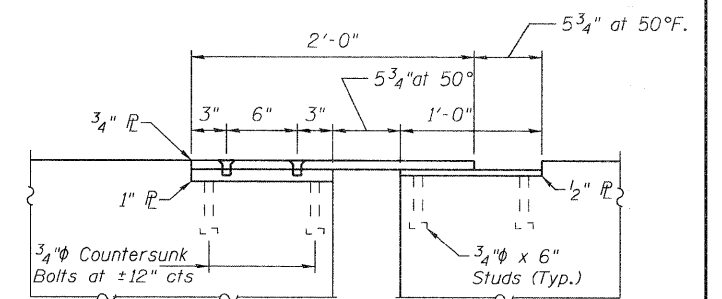
**ELEVATION (SECTION I-I)**  
(Looking South)



**DRAIN PIPE DETAILS**  
(Pier 3 Ramp E - Looking North)  
(Pier 3 Ramp F - Looking South)



**PIPE CLAMP DETAIL**



**PARAPET SLIDING PLATE DETAIL**

**RAMP F**  
**PIER 3 FINGER PLATE**  
**SN 082-017 & 0218**

DESIGNED	A. Holloway
CHECKED	J. Uehle
DRAWN	A. Holloway
CHECKED	J. Uehle

EXAMINED	Jan 15, 2018
PASSED	Engineer of Structural Services
	Engineer of Bridges and Structures

Beam end removal. See sheet 11 of 16 for details.

SHEET NO. 10	F.A.I. RTE.	SECTION	COUNTY	TOTAL SHEETS	SHEET NO.
	255	82-7HB-I	ST. CLAIR	43	17
16 SHEETS	CONTRACT NO. 76C33				
FED. ROAD DIST. NO.		ILLINOIS FED. AID PROJECT			