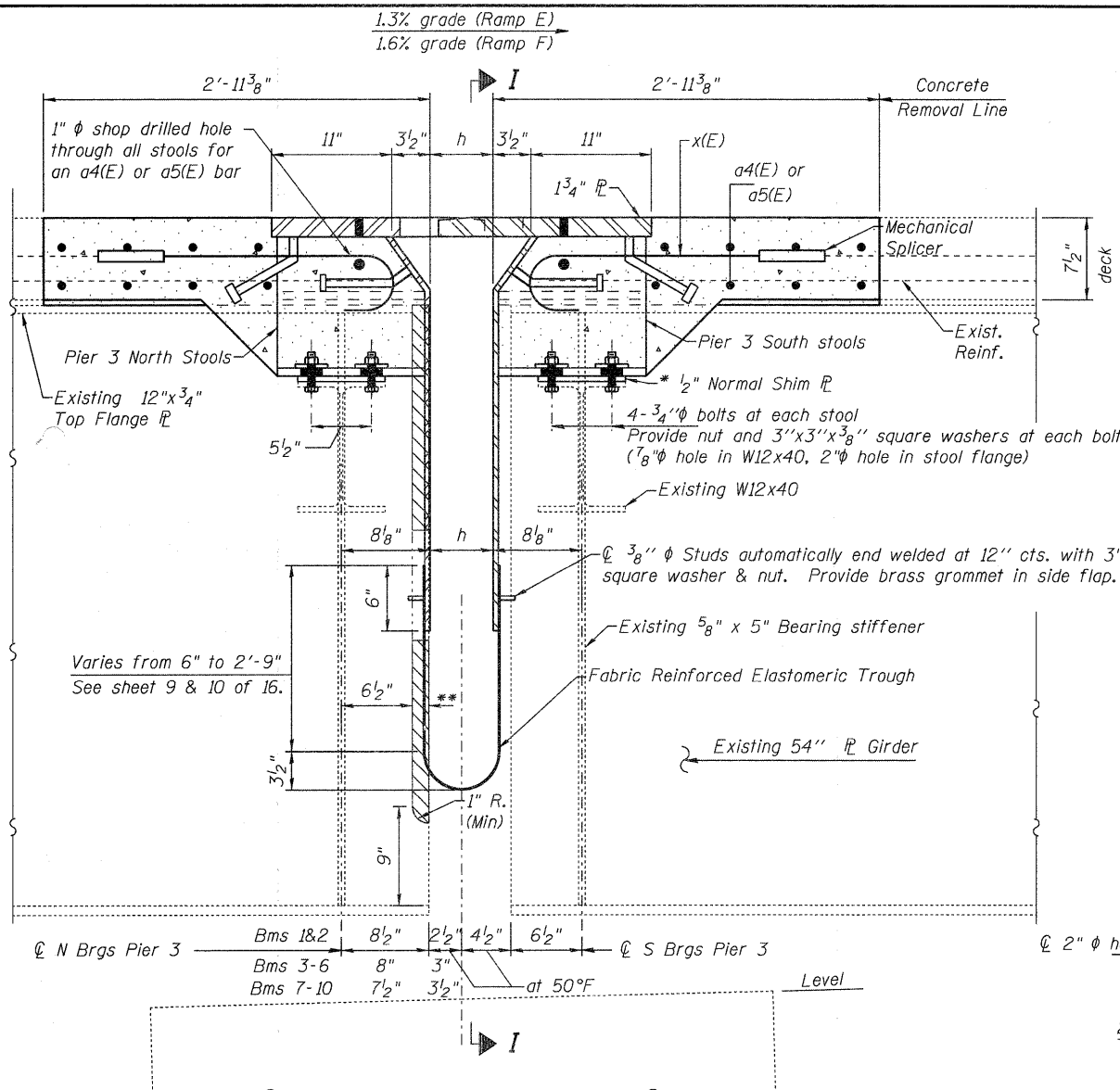


STATE OF ILLINOIS
DEPARTMENT OF TRANSPORTATION



SECTION F-F
(Looking East)
(Section shown rotated level to grade)

Notes: See sheets 9 & 10 of 16 for stool locations & Section I-I.

- Stool heights are measured at ϕ of bearings.
- All plates shall be AASHTO M270, Gr. 50.
- Existing shear studs that interfere with the finger plate stool shall be removed using the air-arc method and grind smooth all weld material remaining on the top flange. Cost included with Finger Plate Expansion Joint, 5".
- Finger Plate Expansion Joints shall be assembled in the proper position with the ends in place and shall be left assembled for shop inspection.
- Existing reinforcement shall extend 6" min. into the removal area to allow attachment of the mechanical splicers.

DESIGNED	J. Uehle
CHECKED	A. Hallway
DRAWN	J. Uehle
CHECKED	A. Hallway

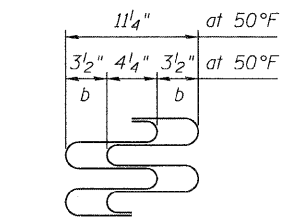
May 8, 2009
EXAMINED *Carl Perry*
ENGINEER OF STRUCTURAL SERVICES
PASSED *Ralph E. Anderson*
ENGINEER OF BRIDGES AND STRUCTURES

RAMP E DIMENSION A

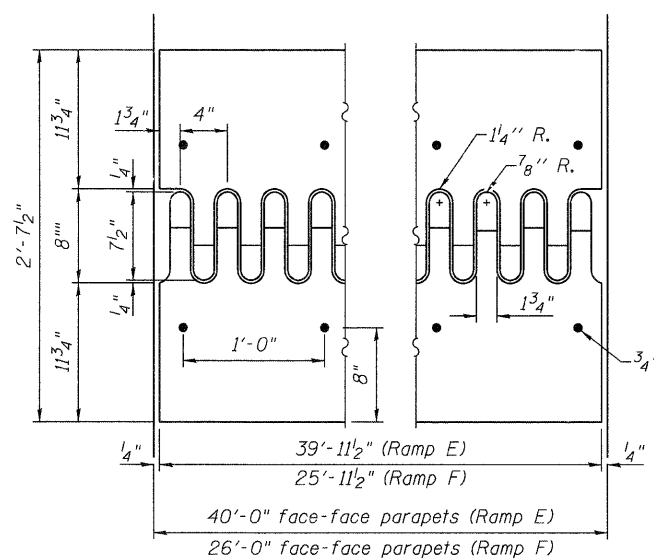
Stool No.	Height
A2	9 ⁵ / ₁₆ "
A3	10 ³ / ₈ "
A4	10 ¹³ / ₁₆ "
A6	11 ¹¹ / ₁₆ "
A7	12"
A8	12 ⁵ / ₁₆ "
A10	13"
A11	13 ⁵ / ₁₆ "
A12	13 ¹¹ / ₁₆ "
A14	14 ³ / ₈ "
A15	14 ¹¹ / ₁₆ "
A16	15"
A18	15 ¹¹ / ₁₆ "
A19	15 ⁷ / ₈ "
A20	15 ⁷ / ₁₆ "

RAMP F DIMENSION A

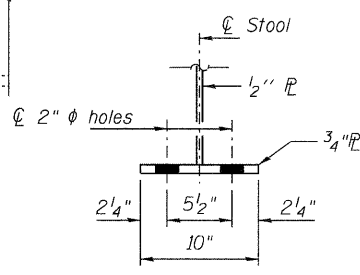
Stool No.	Height
A23	13 ⁷ / ₁₆ "
A24	13 ¹ / ₁₆ "
A25	12 ³ / ₄ "
A27	12 ¹ / ₁₆ "
A28	11 ³ / ₄ "
A29	11 ⁷ / ₁₆ "
A31	10 ³ / ₄ "
A32	10 ³ / ₈ "
A33	9 ⁵ / ₁₆ "



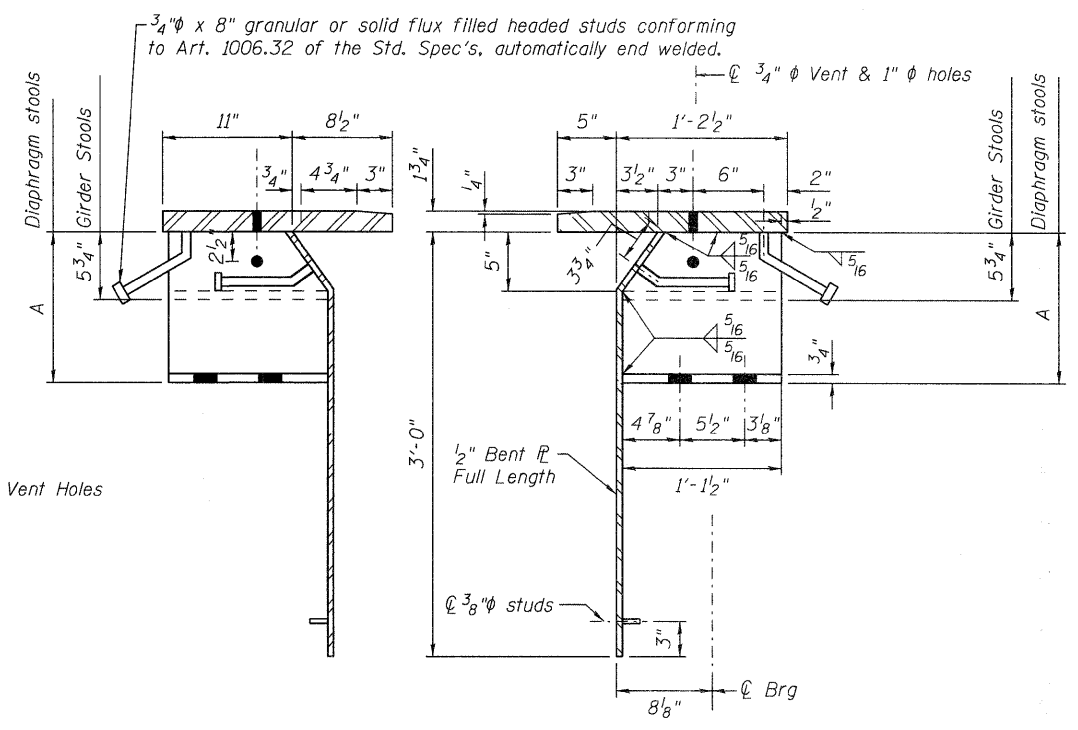
FINGER DETAILS



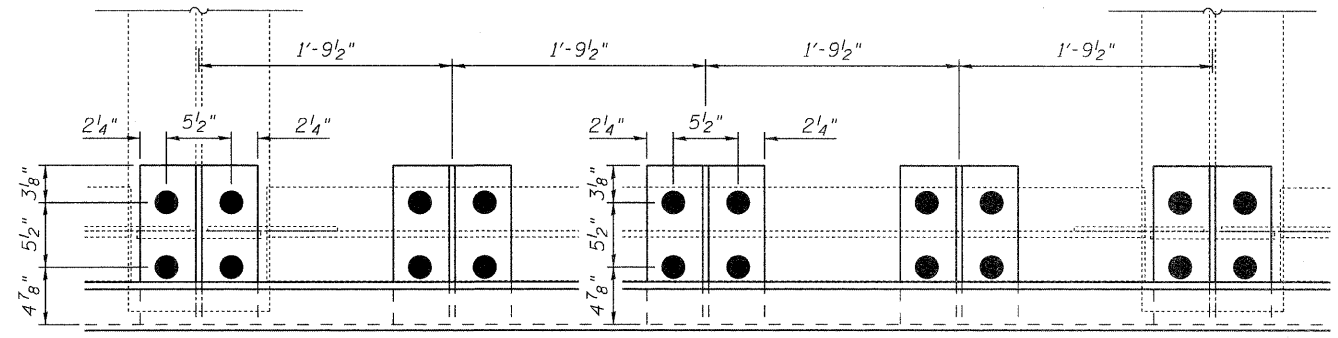
FLAME CUTTING DIAGRAM
(Cut from M270 Gr. 50)



STOOL SECTION



STOOLS
(Looking East)



PARTIAL PLAN OF STOOLS

Pier 3 Ramp E (431' Expansion Length)

Temp.	b	h
-30°F	6 ¹ / ₈ "	8 ³ / ₈ "
50°F	3 ¹ / ₂ "	5 ³ / ₄ "
130°F	7 ⁸ / ₈ "	3 ¹ / ₈ "

Pier 3 Ramp F (376' Expansion Length)

Temp.	b	h
-30°F	5 ⁷ / ₈ "	8 ¹ / ₈ "
50°F	3 ¹ / ₂ "	5 ³ / ₄ "
130°F	1 ¹ / ₈ "	3 ³ / ₈ "

- * Provide 1/2 inch normal shim, plus one 1/4 inch shim, plus one 1/8 inch shim, and one 1/16 inch shim for height adjustment. Tapered shims shall be added under the stools as required by the Engineer to make a smooth finger joint.
- ** Cut off the top flange & webs of the 6 north side plate girders. Remove 2" (Beams 1 & 2), 1 1/2" (Beams 3-6), and 1" (Beams 7-10)

**RAMPS E & F
PIER 3 FINGER PLATE DETAILS
SN 082-0217 & 0218**

SHEET NO. 11 16 SHEETS	F.A.I. RTE.	SECTION	COUNTY	TOTAL SHEETS	SHEET NO.
	255	82-7HB-1	ST. CLAIR	43	18
FED. ROAD DIST. NO. 7 ILLINOIS			FED. AID PROJECT IM-255()		
CONTRACT NO. 76C33					