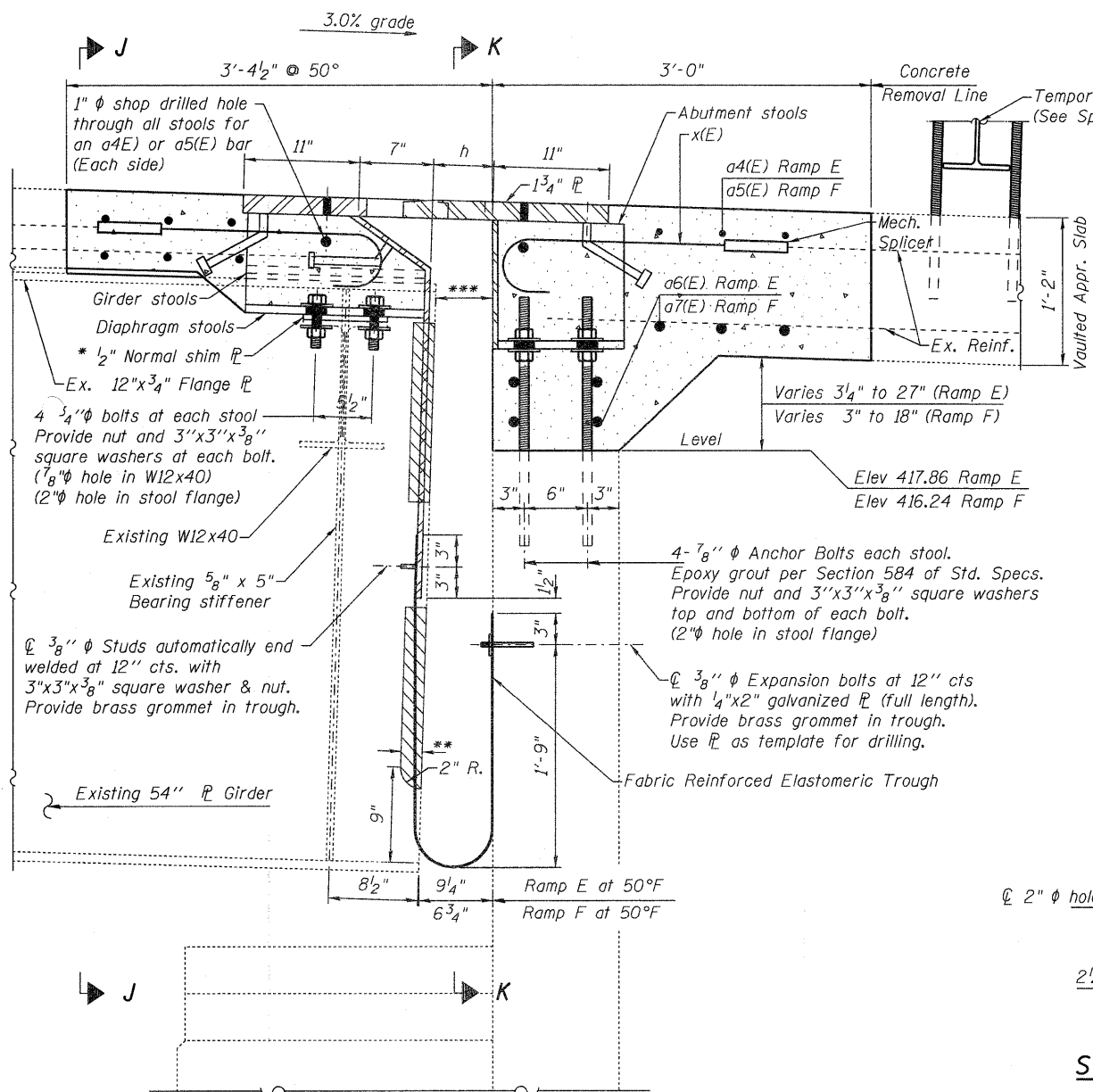


STATE OF ILLINOIS
DEPARTMENT OF TRANSPORTATION



SECTION H-H
(Looking East)

Notes: See sheet 12 & 14 of 16 for stool locations & Section J-J.

See sheet 13 & 15 of 16 for Section K-K.

Stool heights are measured at ϕ of bearings.

All plates shall be AASHTO M270, Gr. 50.

Existing shear studs that interfere with the finger plate stool shall be removed using the air-arc method and grind smooth all weld material remaining on the top flange. Cost included with Finger Plate Expansion Joint, 5".

Finger Plate Expansion Joints shall be assembled in the proper position with the ends in place and shall be left assembled for shop inspection.

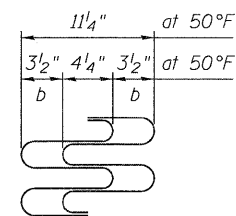
Existing reinforcement shall extend 6" min. into the removal area to allow attachment of the mechanical splicers.

DESIGNED	J. Uehle
CHECKED	A. Hallway
DRAWN	J. Uehle
CHECKED	A. Hallway

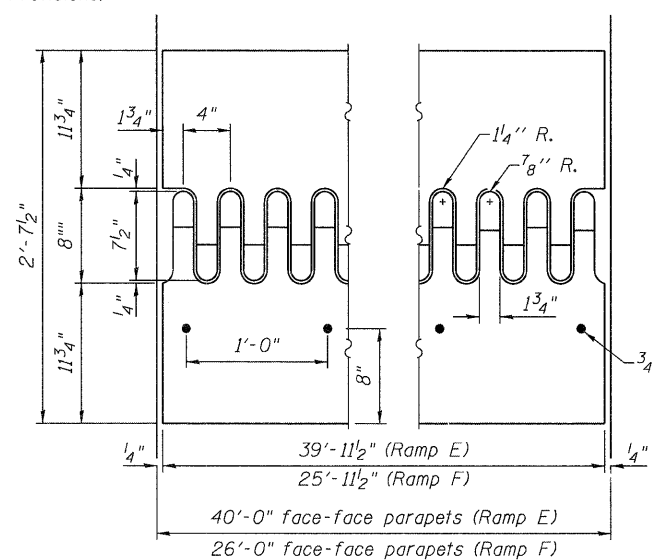
May 8, 2009
EXAMINED *Carl Perry*
ENGINEER OF STRUCTURAL SERVICES
PASSED *Ralph E. Anderson*
ENGINEER OF BRIDGES AND STRUCTURES

S Abut Ramps E & F
(408' Expansion Length)

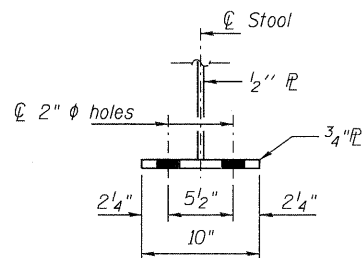
Temp.	b	h
-30°F	6"	8 1/4"
50°F	3 1/2"	5 3/4"
130°F	1"	3 1/4"



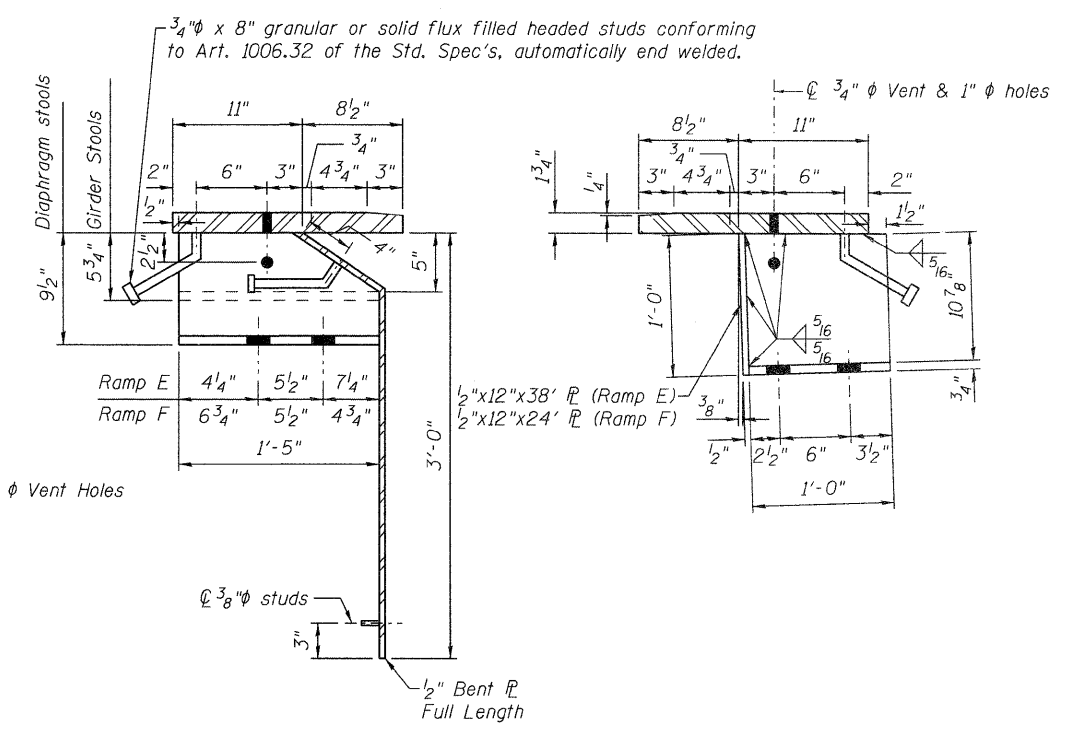
FINGER DETAILS



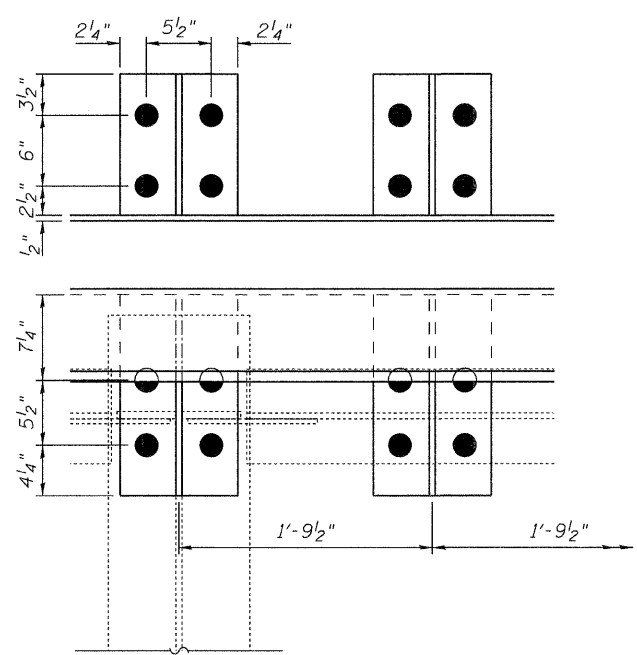
FLAME CUTTING DIAGRAM
(Cut from M270 Gr. 50)



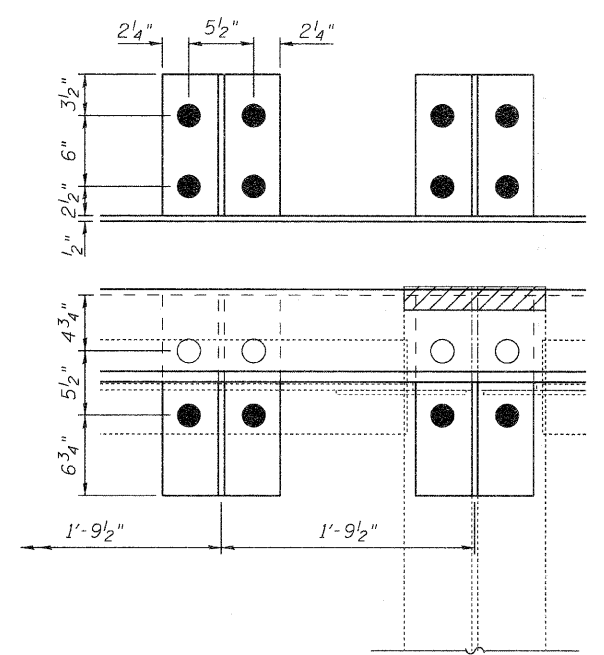
STOOL SECTION



STOOLS
(Looking East)



PARTIAL PLAN OF RAMP E STOOLS



PARTIAL PLAN OF RAMP F STOOLS

* Provide 1/2" normal shim, plus one 1/4" shim, plus one 1/8" shim, and one 1/16" shim for height adjustment. Tapered shims shall be added under the stools as required by the Engineer to make a smooth finger joint.

** Cut 2" from the top flange & webs of the 4 plate girders at Ramp F only (beams 7-10).

*** 8" at 50°F (Ramp E); 5 1/2" at 50°F (Ramp F) calculated from field measurements.

RAMPS E & F
S ABUTMENT FINGER PLATE DETAILS
SN 082-0217 & 0218

SHEET NO. 15 16 SHEETS	F.A.I. RTE.	SECTION	COUNTY	TOTAL SHEETS	SHEET NO.
	255	82-7HB-1	ST. CLAIR	43	22
			CONTRACT NO. 76C33		
FED. ROAD DIST. NO. 7		ILLINOIS	FED. AID PROJECT	IM-255()	