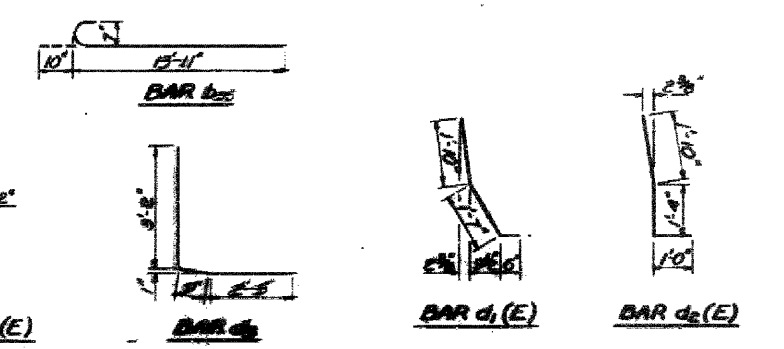
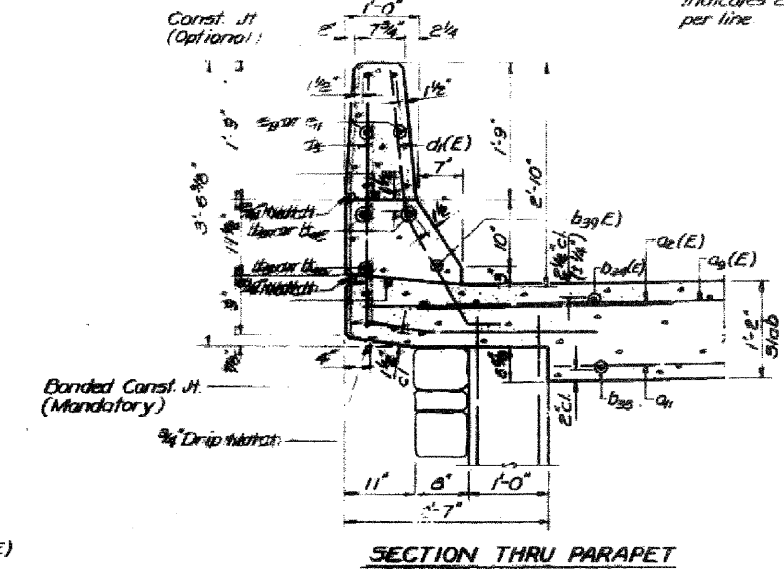
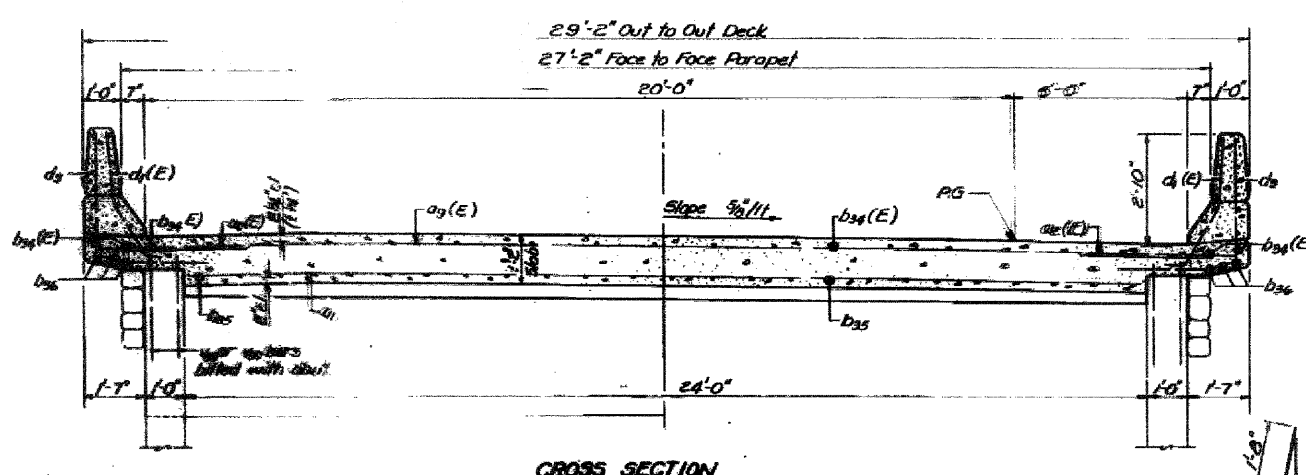
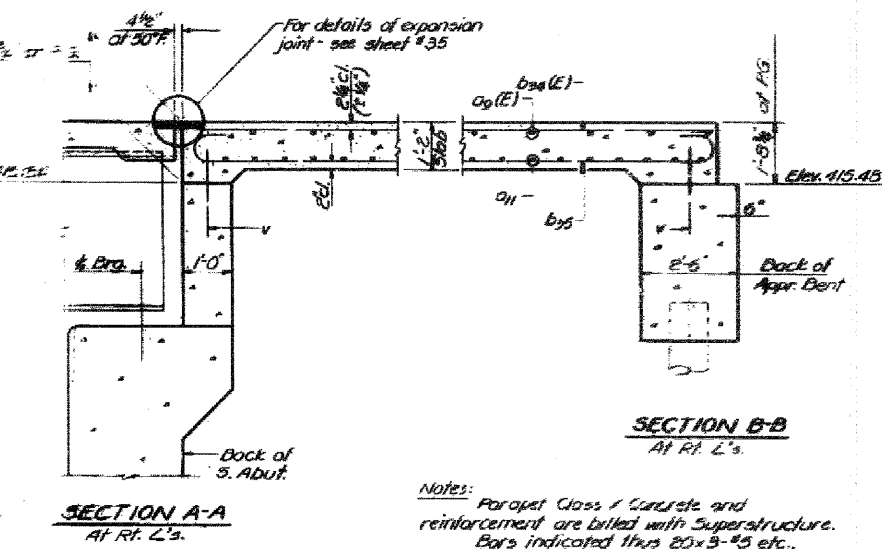
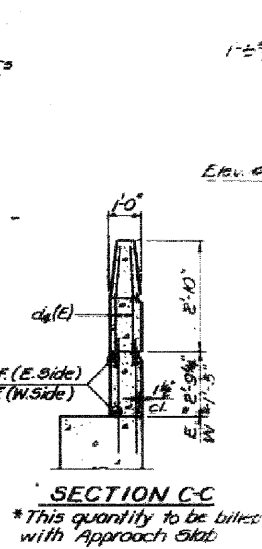
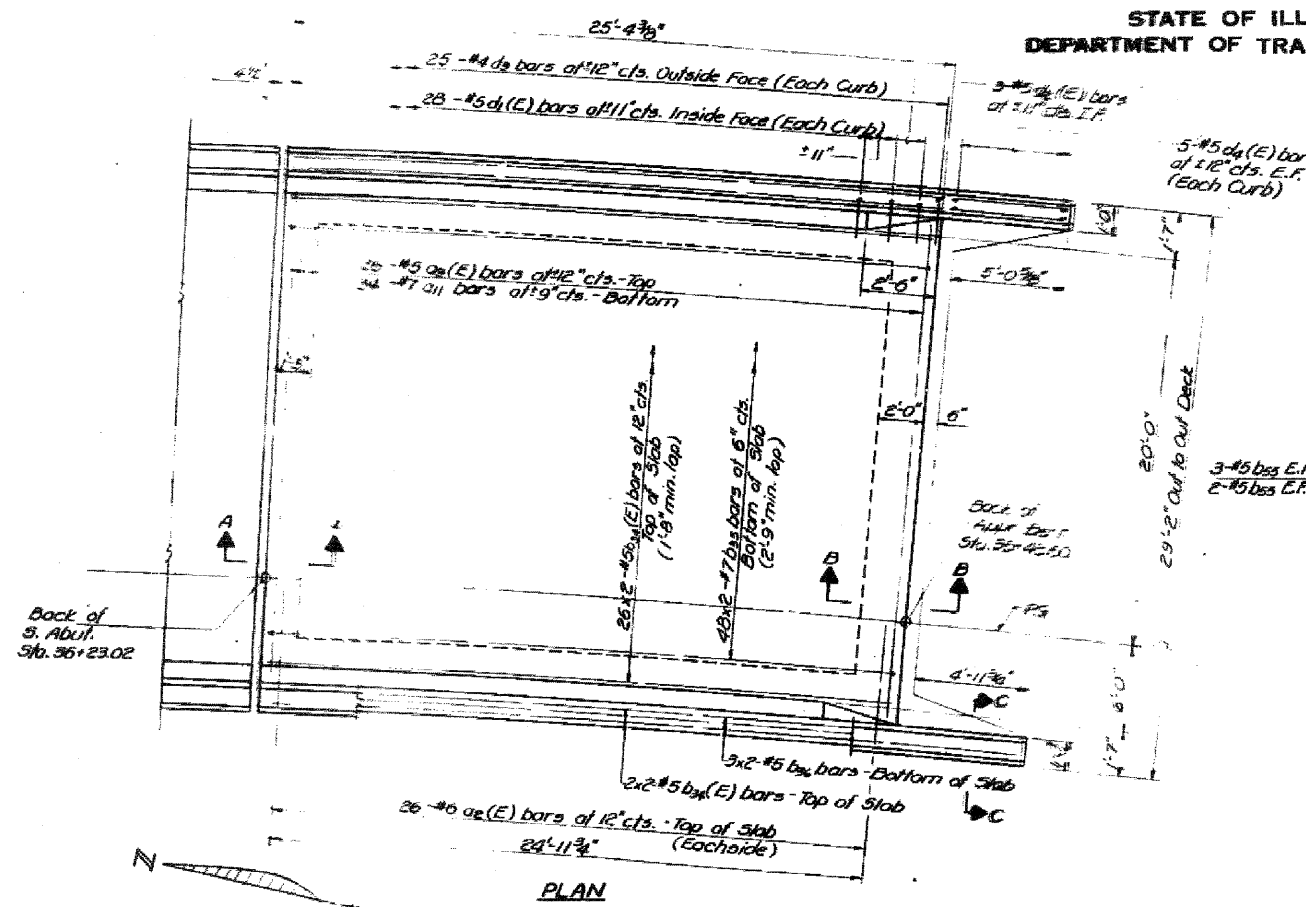


STATE OF ILLINOIS  
DEPARTMENT OF TRANSPORTATION

DATE	BY	CHKD	APP'D	SHEET NO. 17
12-1-83	5-DW	BS	41	69 SHEETS



**BILL OF MATERIAL**

Bar	No.	Size	Length	Shape
a <sub>2</sub> (E)	52	15	4'-0"	
a <sub>2</sub> (E)	26	15	2'-2"	
a <sub>1</sub>	34	17	23'-0"	
d <sub>4</sub> (E)	60	15	13'-4"	
b <sub>35</sub>	36	17	14'-9"	C
b <sub>35</sub>	12	15	13'-11"	
b <sub>35</sub>	10	15	5'-2"	
d <sub>1</sub> (E)	56	15	3'-11"	L
d <sub>2</sub> (E)	6	15	6'-2"	L
d <sub>2</sub>	50	14	6'-2"	L
d <sub>2</sub> (E)	20	15	3'-11"	L
Reinforcement Bars	Lbs.	4970		
Reinforcement Bars ( epoxy coated )	Lbs.	2220		
Class X Concrete	Cu/Yds.	35.0		

Reinforcement bars designated (E) shall be epoxy coated. See Special Provisions

DESIGNED: Rick Brunette  
CHECKED: Jim Kemer  
DESIGNED: J.B. FERCHOW  
CHECKED: J.K.

Note: All a<sub>2</sub>(E), a<sub>1</sub>(E) & a<sub>1</sub> bars will be placed radially.

APPROACH SLAB  
SOUTH END - RAMP F  
F.A.I. R.T.E. SEC. 82-7HB-1  
ST. CLAIR COUNTY  
STATION 343+61.11

FOR INFORMATION ONLY

FILE NAME =	USER NAME = #USER#	DESIGNED -	REVISED -	STATE OF ILLINOIS DEPARTMENT OF TRANSPORTATION	EXISTING STRUCTURE PLANS	F.A.I. RTE.	SECTION	COUNTY	TOTAL SHEETS	SHEET NO.	
#FILE#		DRAWN -	REVISED -			255	82-7HB-1	ST. CLAIR	43	34	
		CHECKED -	REVISED -			SCALE: NA	SHEET NO. 11 OF 20 SHEETS	STA.	TO STA.	CONTRACT NO. 76C33	
		DATE	REVISED -			FED. ROAD DIST. NO.		ILLINOIS FED. AID PROJECT			