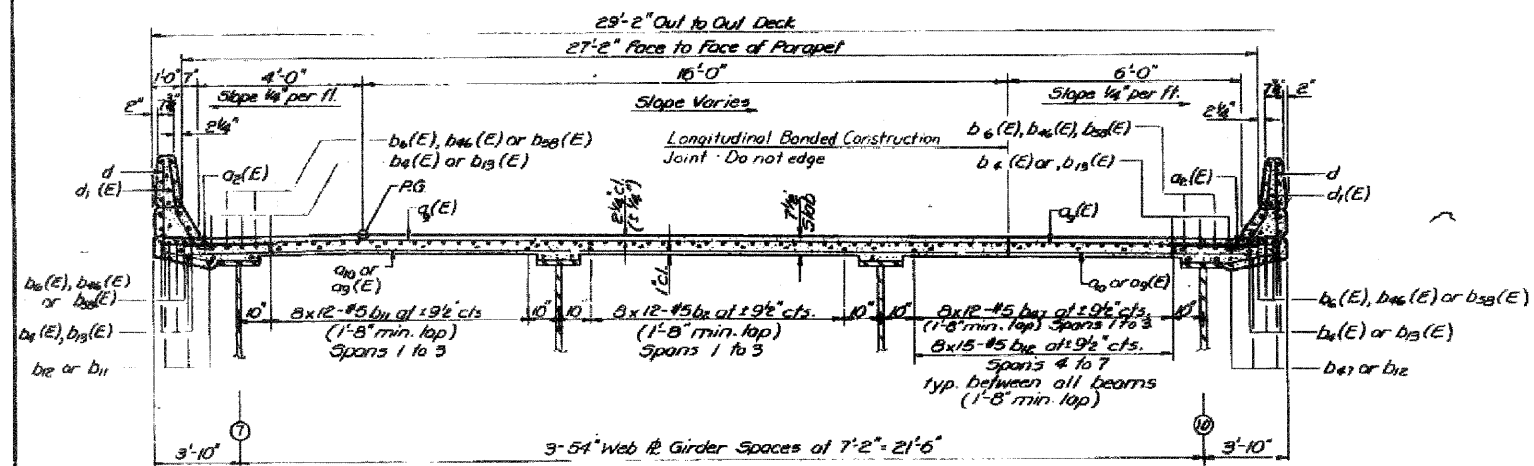


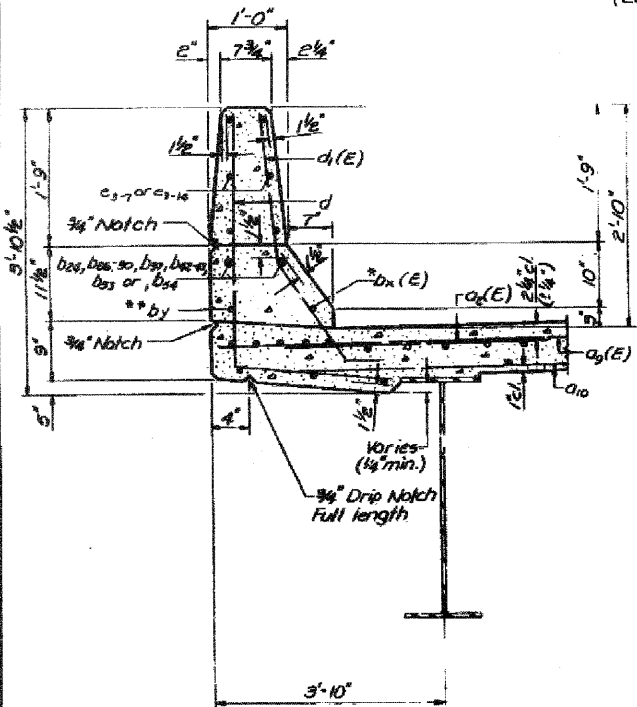
STATE OF ILLINOIS
DEPARTMENT OF TRANSPORTATION

2" Open Joint of 50°F. of Rt. L's. (N. Abut.)
4" Open Joint of 50°F. of Rt. L's. (S. Abut.)

PROJECT NO.	SECTION	COUNTY	TOTAL SHEETS	SHEET NO.
82-7HB	St. Clair	83	42	69

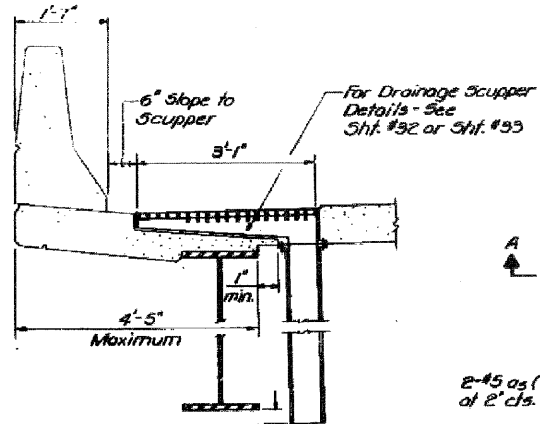


CROSS SECTION
(Looking South)



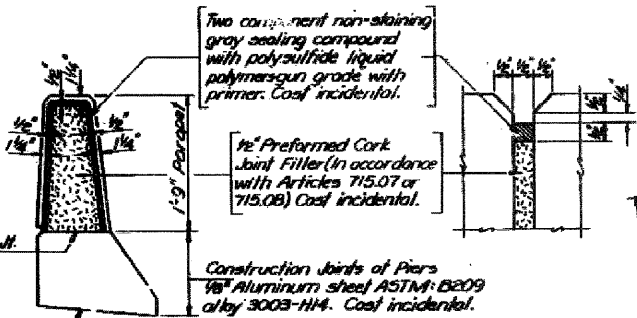
SECTION THRU PARAPET

* x = 0, 3, 4, 13, 15, 18, 31, 48-50
** y = 2, 7, 10-12, 20, 21, 23, 24, 40, 44, 51 & 52



SECTION A-A

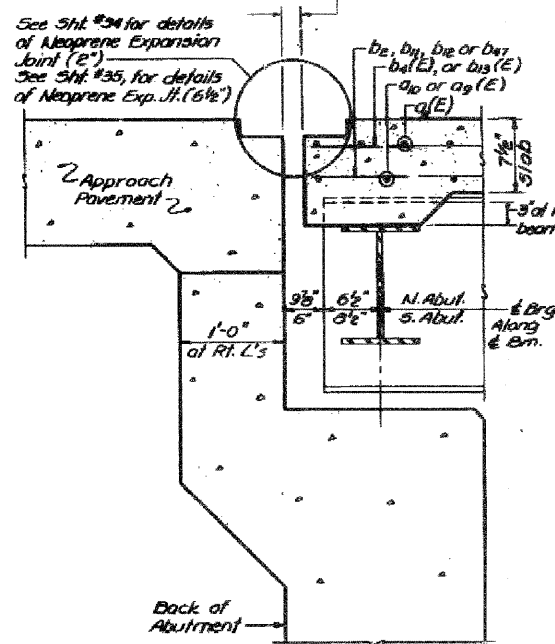
DRAINAGE SCUPPER DETAILS



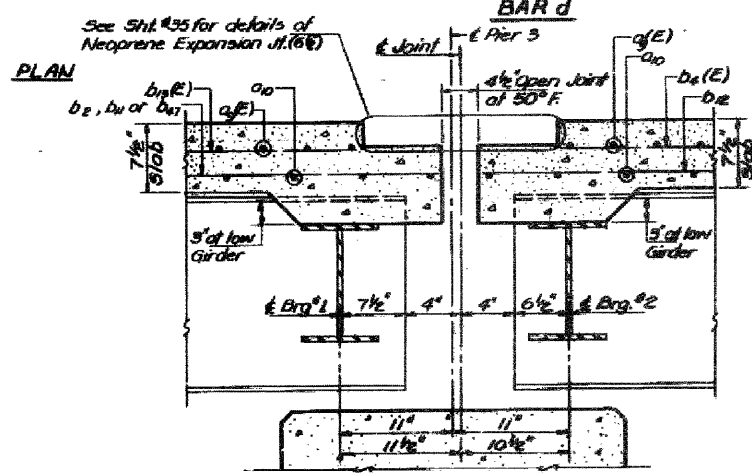
PARAPET JOINT DETAILS



BAR d(E)



SECTION THRU ABUT'S
Looking East-North Abutment
Looking West-South Abutment



SECTION THRU PIER 3
Looking East

BAR	NO.	SIZE	LENGTH	GRADE
a ₁ (E)	1651	45	4'-0"	
a ₂ (E)	28	45	2'-0"	
a ₃ (E)	2	45	36'-6"	
a ₄ (E)	1669	45	27'-2"	
a ₅	1178	45	27'-2"	
b ₁ (E)	11	45	32'-6"	
b ₂	105	45	32'-6"	
b ₃ (E)	6	45	35'-6"	
b ₄ (E)	496	45	36'-5"	
b ₅ (E)	30	45	29'-9"	
b ₇	6	45	36'-4"	
b ₈	3	45	35'-10"	
b ₉	141	45	33'-4"	
b ₁₀	456	45	36'-5"	
b ₁₁ (E)	393	45	33'-4"	
b ₁₂ (E)	12	45	21'-0"	
b ₁₃ (E)	8	45	27'-4"	
b ₁₄	12	45	21'-0"	
b ₁₅	1	45	30'-0"	
b ₁₆	8	45	27'-4"	
b ₁₇	6	45	35'-3"	
b ₁₈	16	45	21'-0"	
b ₁₉	16	45	21'-9"	
b ₂₀	12	45	34'-8"	
b ₂₁	24	45	30'-2"	
b ₂₂	12	45	37'-2"	
b ₂₃	4	45	39'-3"	
b ₂₄	2	45	30'-0"	
b ₂₅ (E)	2	45	28'-0"	
b ₂₆	2	45	30'-6"	
b ₂₇	12	45	36'-6"	
b ₂₈	4	45	39'-6"	
b ₂₉ (E)	180	45	27'-2"	
b ₃₀	132	45	32'-0"	
b ₃₁ (E)	8	45	20'-0"	
b ₃₂ (E)	3	45	33'-9"	
b ₃₃ (E)	4	45	24'-10"	
b ₃₄	8	45	20'-0"	
b ₃₅	4	45	21'-10"	
b ₃₆	16	45	20'-0"	
b ₃₇	12	45	37'-8"	
b ₃₈ (E)	180	45	28'-2"	
c	1792	44	5'-8"	
c ₁ (E)	1954	45	5'-11"	
e ₁	150	44	18'-6"	
e ₂	34	44	18'-11"	
e ₃	24	44	19'-11"	
e ₄	108	44	20'-11"	
e ₅	24	44	21'-5"	
e ₆	6	44	30'-0"	
e ₇	12	44	30'-6"	
e ₈	6	44	30'-6"	
e ₉	24	44	20'-3"	
e ₁₀	30	44	19'-3"	
e ₁₁	60	44	20'-7"	

Class X Concrete Cuyler 63916
Reinforcement Bars Foundry 89,950
Reinforcement Bars (Epoxy Coated) Foundry 110,000
Reinforcement bars designated (E) shall be epoxy coated. See Special Provisions.

SUPERSTRUCTURE DETAILS
RAMP-F
F.A.I. RT. 670 SEC. 82-7HB
ST. CLAIR COUNTY
STATION 343+61.11

FOR INFORMATION ONLY