

STATE OF ILLINOIS  
DEPARTMENT OF TRANSPORTATION

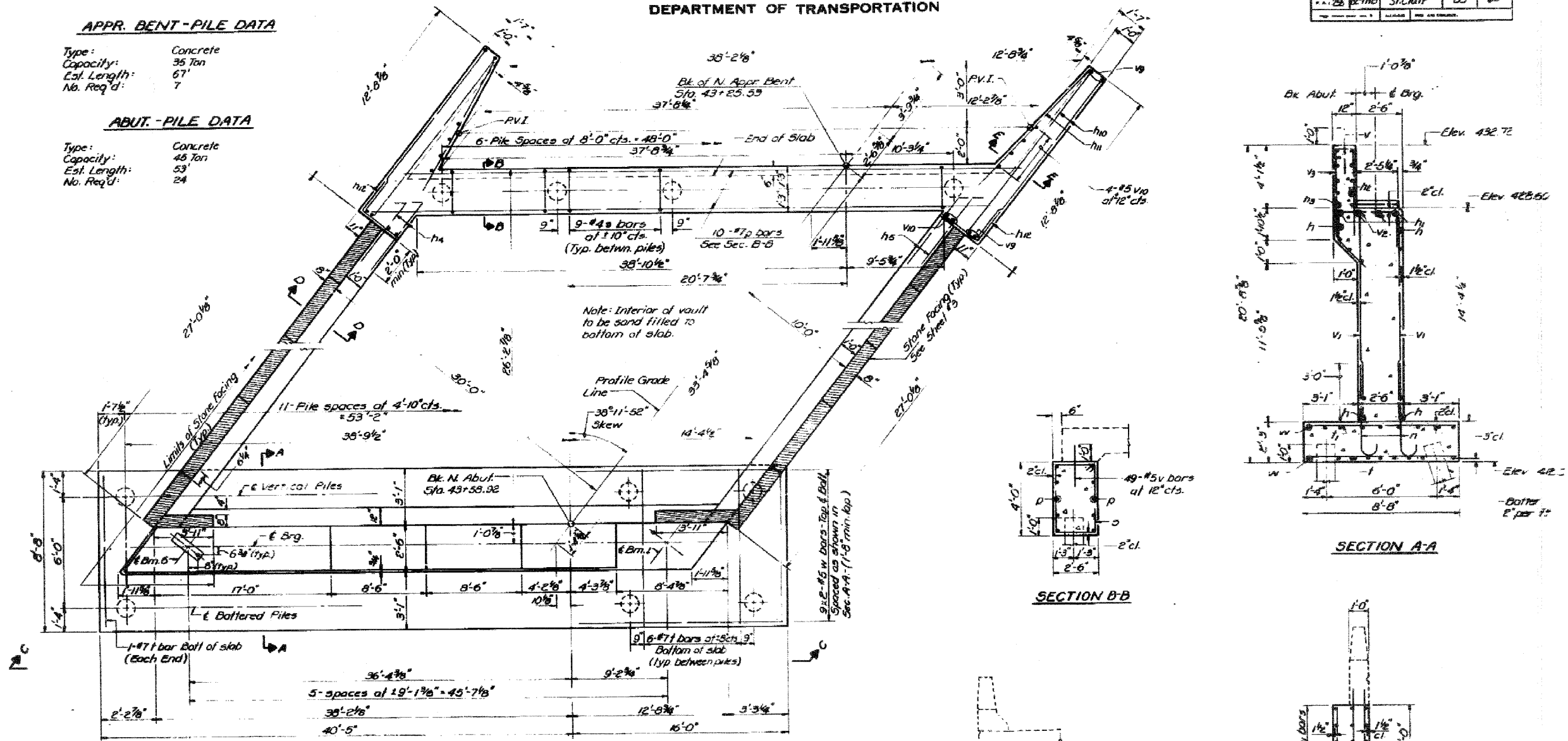
PROJECT NO.	SECTION	COUNTY	TOTAL SHEETS	SHEET NO.
82-7HB	St. Clair	B3	63	69

APPR. BENT-PILE DATA

Type: Concrete  
Capacity: 35 Ton  
Est. Length: 67'  
No. Req'd: 7

ABUT.-PILE DATA

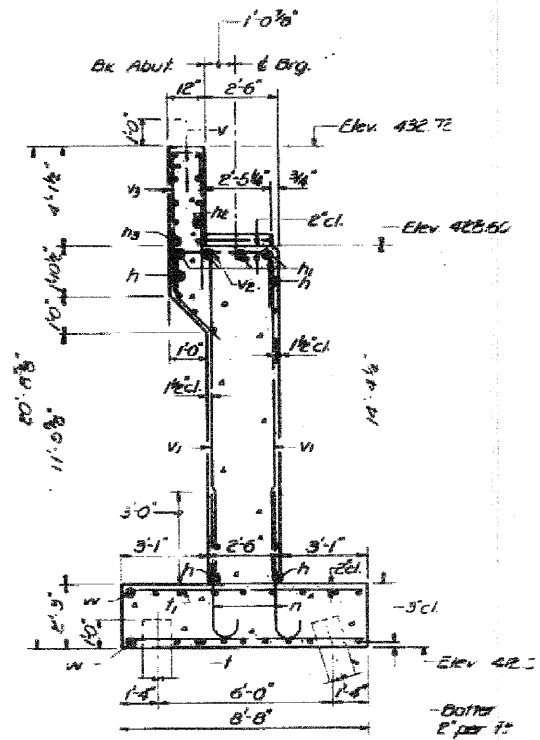
Type: Concrete  
Capacity: 45 Ton  
Est. Length: 53'  
No. Req'd: 24



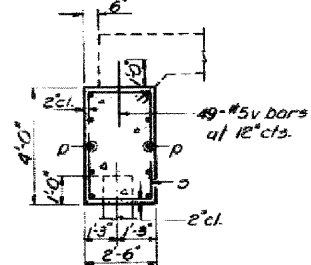
PLAN  
(Looking North)

Notes:  
For all remaining Sections, Abutment details and Bill of Materials, see sheet #50  
Bars indicated thus 10x2-#7 etc. indicates 10 lines of bars with 2 lengths per line.  
Steps shall be poured monolithically with stem.  
Space reinforcement in top to miss anchor balls.  
All edges shall have standard 3/4" chamfers except as noted

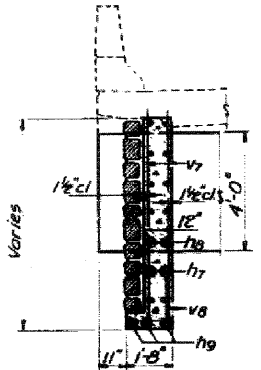
DESIGNED	Rect Brunette	EXAMINED	[Signature]
CHECKED	Jim Kemout	APPROVED	[Signature]
DESIGNED	S.G. FERCHOV		
CHECKED	J.R.		



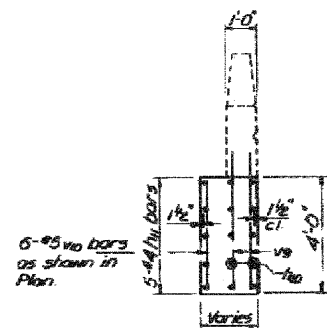
SECTION A-A



SECTION B-B



SECTION D-D



SECTION E-E

RAMP-E  
NORTH ABUTMENT  
F.A.I. RT. 270 SEC. 82-7HB  
ST. CLAIR COUNTY  
STATION 34316.11

FOR INFORMATION ONLY

FILE NAME =	USER NAME = #USER#	DESIGNED -	REVISED -	STATE OF ILLINOIS DEPARTMENT OF TRANSPORTATION	EXISTING STRUCTURE PLANS	F.A.I. RTE.	SECTION	COUNTY	TOTAL SHEETS	SHEET NO.	
#FILE#		DRAWN -	REVISED -			255	82-7HB-1	ST. CLAIR	43	36	
	PLOT SCALE = #SCALE#	CHECKED -	REVISED -			CONTRACT NO. 76C33					
	PLOT DATE = #DATE#	DATE -	REVISED -			SCALE: NA	SHEET NO. 13 OF 20 SHEETS	STA.	TO STA.		FED. ROAD DIST. NO.