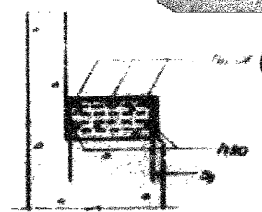
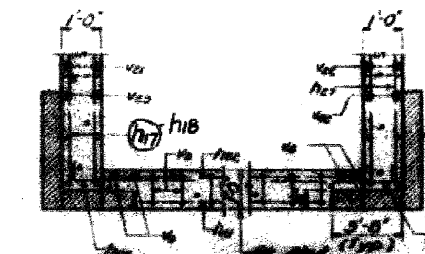
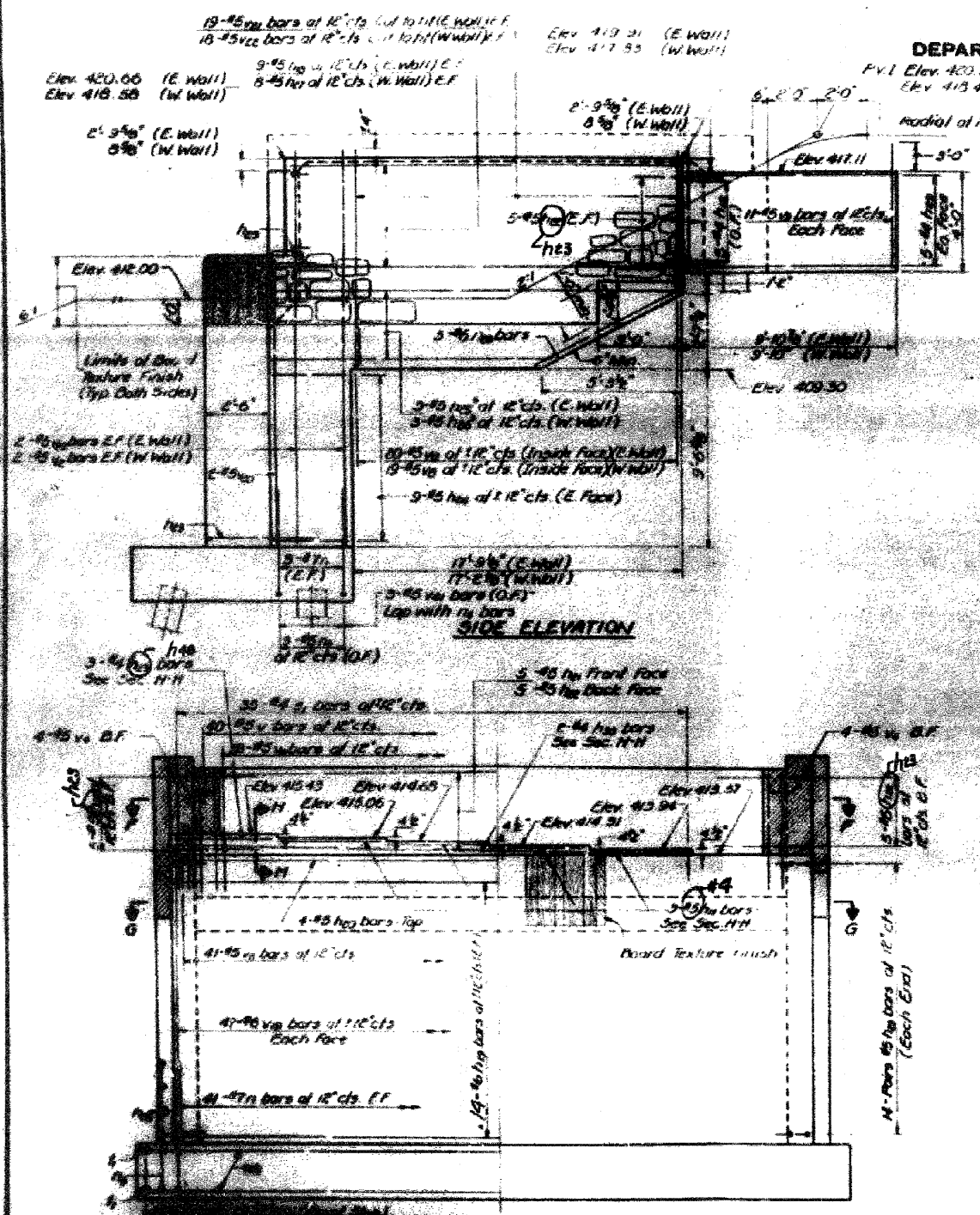


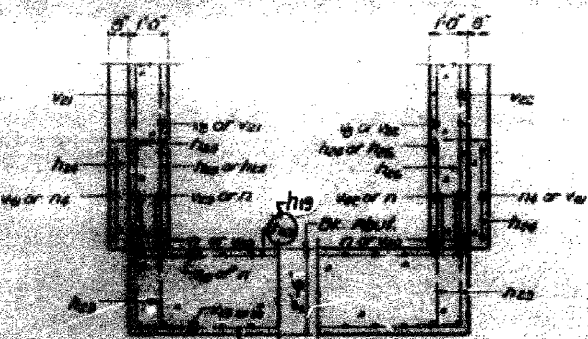
STATE OF ILLINOIS
DEPARTMENT OF TRANSPORTATION

Project No.	255	Sheet No.	43
Section	82-7HB-1	Contract No.	76C33



SECTION P-P

SECTION H-H

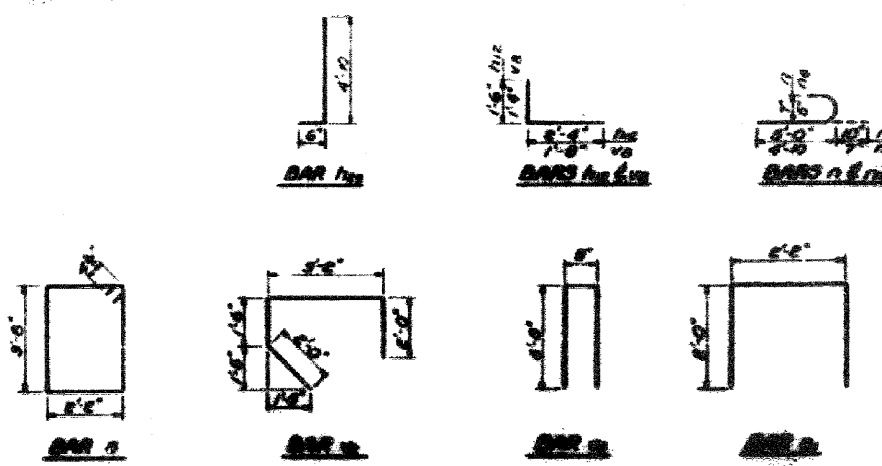


SECTION G-G

FIELD CUTTING BAR
Cut to fit all shown and use remainder of bars in other face

BILL OF MATERIALS

NO.	DESCRIPTION	QTY	UNIT
1	19-#5 bars at 12" c/c		
2	18-#5 bars at 12" c/c		
3	9-#5 bars at 12" c/c		
4	8-#5 bars at 12" c/c		
5	2-#5 bars at 12" c/c		
6	5-#5 bars at 12" c/c		
7	11-#5 bars at 12" c/c		
8	30-#4 bars at 12" c/c		
9	20-#5 bars at 12" c/c		
10	4-#5 bars at 12" c/c		
11	41-#5 bars at 12" c/c		
12	41-#5 bars at 12" c/c		
13	1/4" bars at 12" c/c (Each End)		



VIEW G-G

FOR INFORMATION ONLY

FILE NAME =	USER NAME = #USER#	DESIGNED -	REVISED -	STATE OF ILLINOIS DEPARTMENT OF TRANSPORTATION	EXISTING STRUCTURE PLANS	F.A.I. RTE.	SECTION	COUNTY	TOTAL SHEETS	SHEET NO.	
#FILE#		DRAWN -	REVISED -			255	82-7HB-1	ST. CLAIR	43	39	
		CHECKED -	REVISED -			CONTRACT NO. 76C33					
		DATE -	REVISED -			ILLINOIS FED. AID PROJECT					
				SCALE: NA	SHEET NO. 16 OF 20 SHEETS	STA.	TO STA.				