

STATE OF ILLINOIS
DEPARTMENT OF TRANSPORTATION

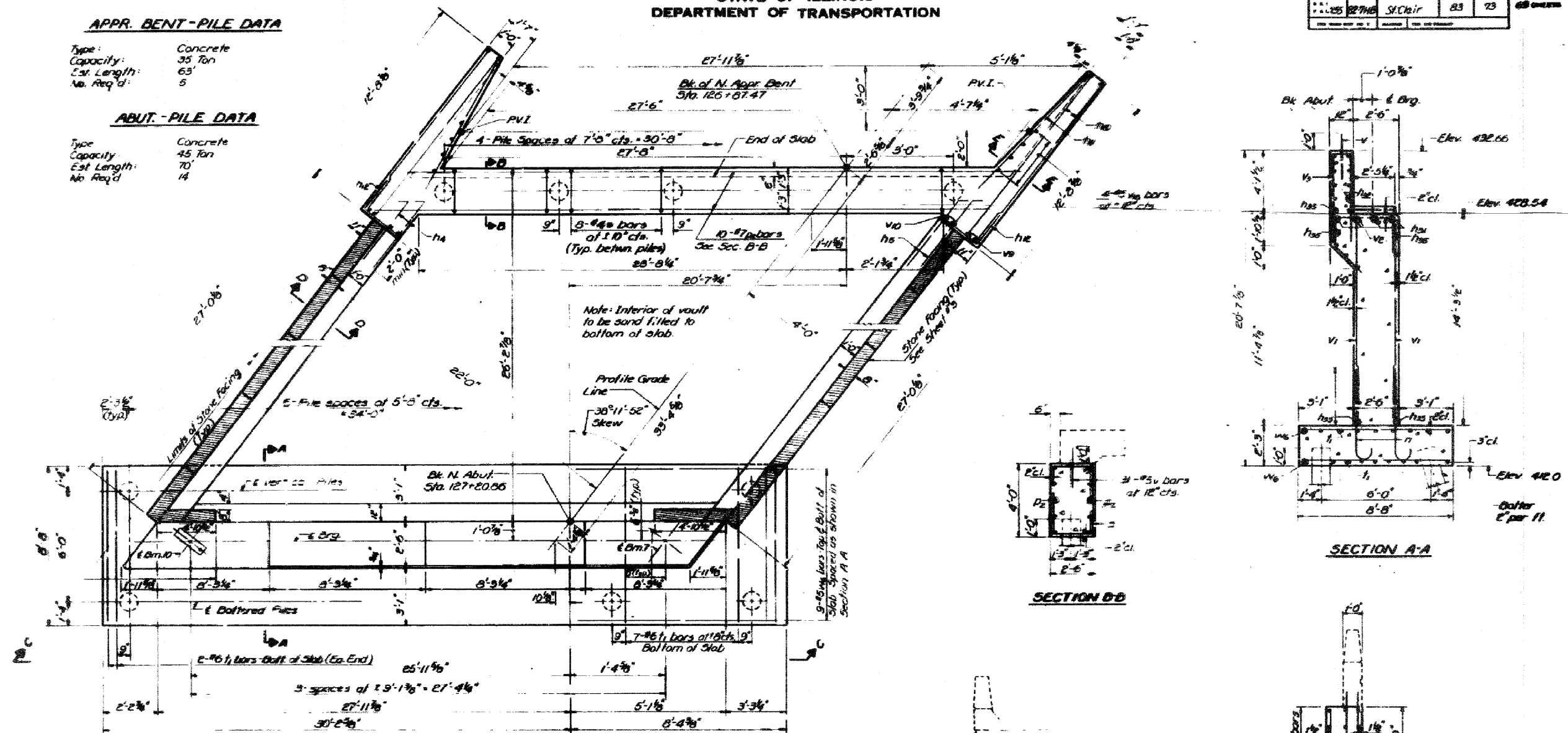
PROJECT NO.	82-7HB	SHEET NO.	17	TOTAL SHEETS	20
SECTION	82-7HB-I	COUNTY	ST. CLAIR	CONTRACT NO.	76C33

APPR. BENT-PILE DATA

Type: Concrete
Capacity: 35 Ton
Est. Length: 63'
No. Req'd: 5

ABUT.-PILE DATA

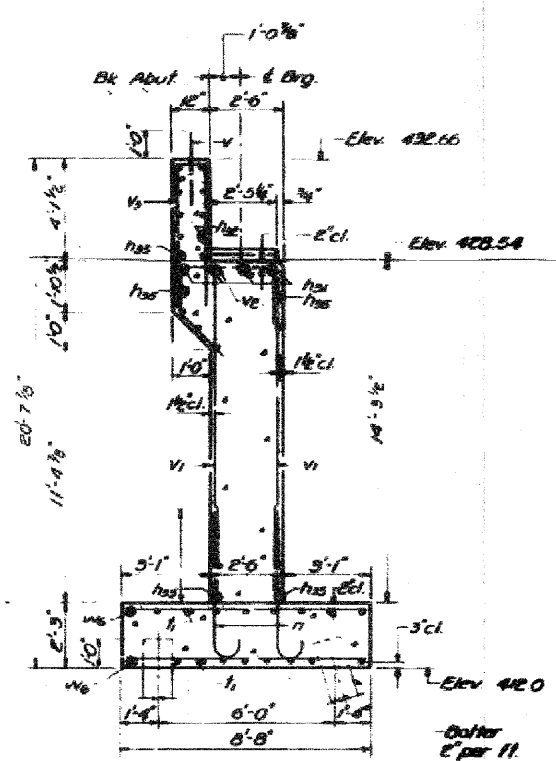
Type: Concrete
Capacity: 45 Ton
Est. Length: 70'
No. Req'd: 14



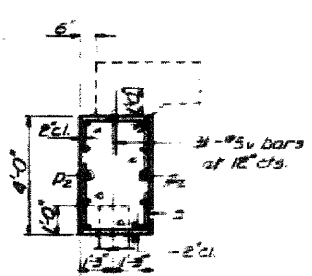
PLAN
(Looking North)

Notes:
For all remaining Sections, Abutment details and Bill of Materials, see sheet #40
Bars indicated thus 10#2-47 etc. indicates 10 lines of bars with # size per line.
Slabs shall be placed continuously with steel space reinforcement in the bridge truss bents.
All edges shall have standard 1/2" chamfers except as noted.

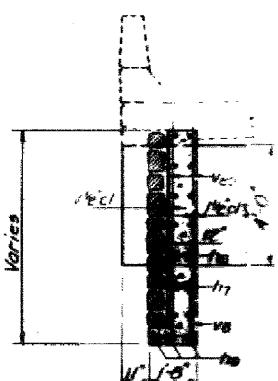
Rev. No.	1	2	3
Date			
By			
Checked			



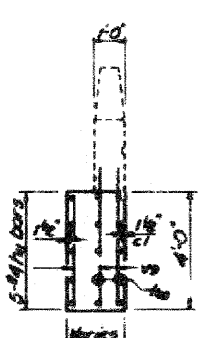
SECTION A-A



SECTION B-B



SECTION D-D



SECTION E-E

FOR INFORMATION ONLY

FILE NAME = #FILE#	USER NAME = #USER#	DESIGNED -	REVISED -	STATE OF ILLINOIS DEPARTMENT OF TRANSPORTATION	EXISTING STRUCTURE PLANS	F.A.I. RTE. 255	SECTION 82-7HB-I	COUNTY ST. CLAIR	TOTAL SHEETS 43	SHEET NO. 40	
	PLOT SCALE = #SCALE#	DRAWN -	REVISED -			SCALE: NA	SHEET NO. 17 OF 20 SHEETS	STA. TO STA.	FED. ROAD DIST. NO. ILLINOIS FED. AID PROJECT	CONTRACT NO. 76C33	
	PLOT DATE = #DATE#	CHECKED -	REVISED -								
		DATE -	REVISED -								