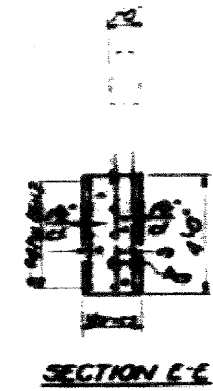
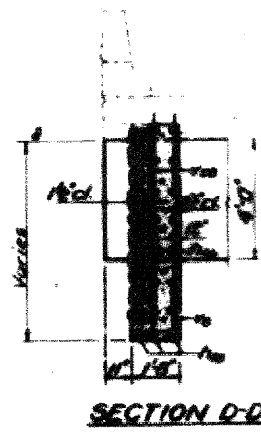
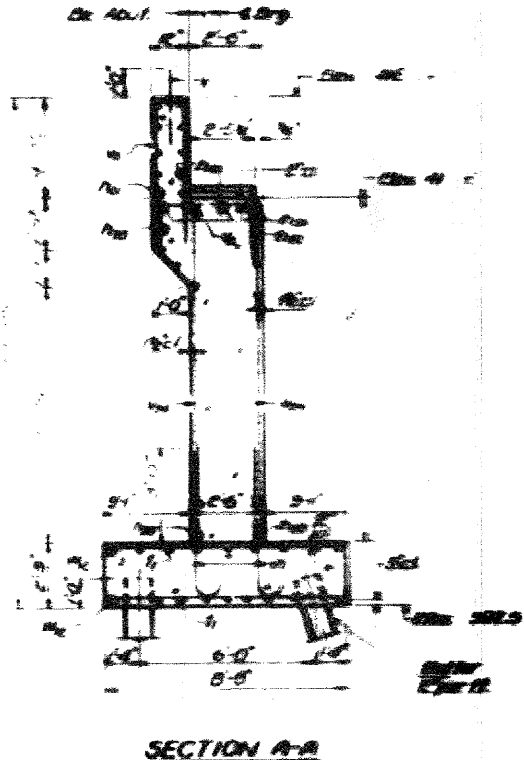
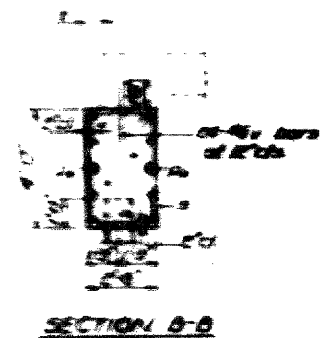
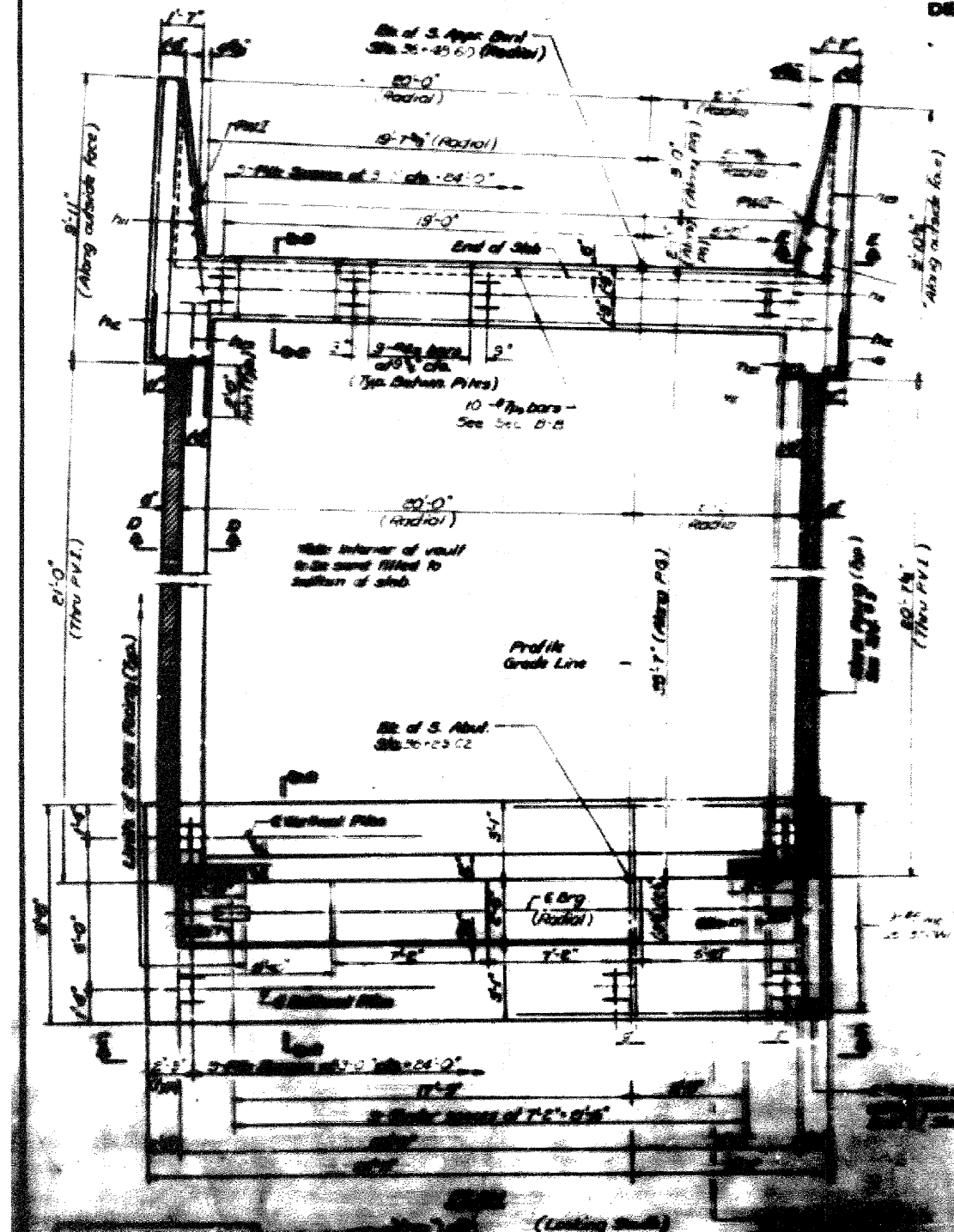


STATE OF ILLINOIS
DEPARTMENT OF TRANSPORTATION

DATE	BY	CHKD	APP'D



1 #4 bar to E-Detail (Spaced as shown in Section A-A)

Note:
For all remaining sections, Abutment details and
other details, see sheet 19.
This indicates that the structure is made of
reinforced concrete.
The structure is to be constructed in accordance
with the specifications for
the project.

APP. BENT - PILE DATA
 1 #4 bar to E-Detail (Spaced as shown in Section A-A)
 2 #4 bars (radial)
 2 #4 bars (radial)
 2 #4 bars (radial)
 2 #4 bars (radial)

FOR INFORMATION ONLY

FILE NAME #	USER NAME # @USER#	DESIGNED -	REVISED -	STATE OF ILLINOIS DEPARTMENT OF TRANSPORTATION	EXISTING STRUCTURE PLANS			F.A.I. RTE.	SECTION	COUNTY	TOTAL SHEETS	SHEET NO.
#FILEL#		DRAWN -	REVISED -					255	82-7HB-1	ST. CLAIR	43	42
	PLOT SCALE # @SCALE#	CHECKED -	REVISED -		SCALE: NA SHEET NO. 19 OF 20 SHEETS STA. TO STA.			CONTRACT NO. 76C33				
	PLOT DATE # @DATE#	DATE -	REVISED -		FED. ROAD DIST. NO. ILLINOIS FED. AID PROJECT							