

STATE OF ILLINOIS
DEPARTMENT OF TRANSPORTATION
DIVISION OF HIGHWAYS

**PROPOSED
HIGHWAY PLANS**

FAU ROUTE 9105 (SALISBURY STREET)
SECTION 119BR-I

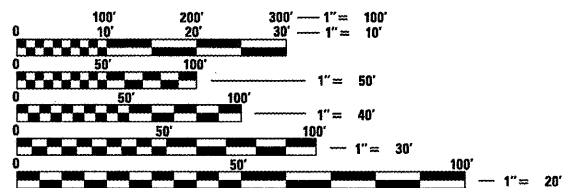
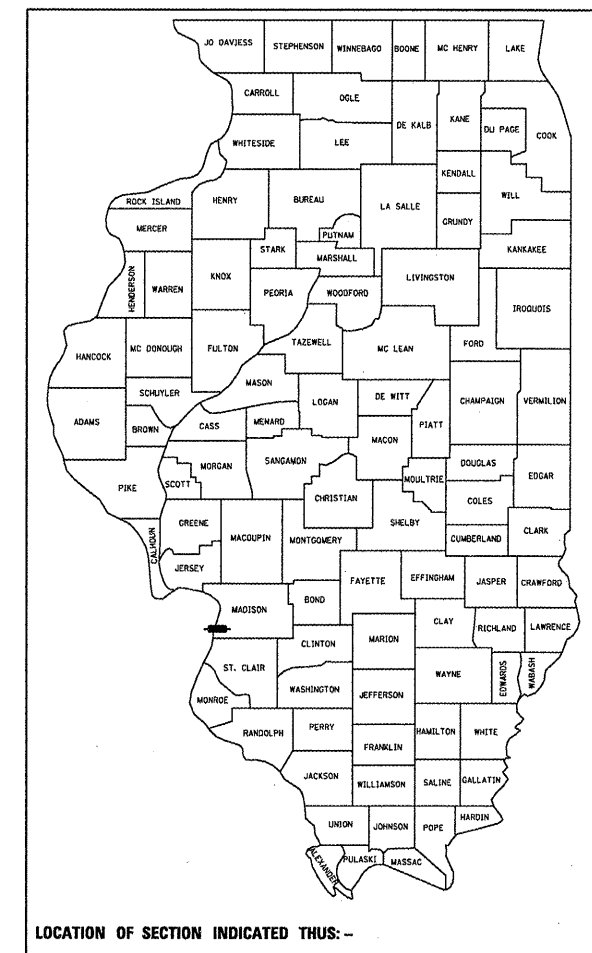
REPLACEMENT OF EYEBAR RESTRAINTS &
PIN COLLARS & BEAM SHELF ASSEMBLY
MADISON COUNTY

C-98-112-10

F.A.U. RTE.	SECTION	COUNTY	TOTAL SHEETS	SHEET NO.
9105	119BR-I	MADISON	6	1
		ILLINOIS	CONTRACT NO. 76E19	

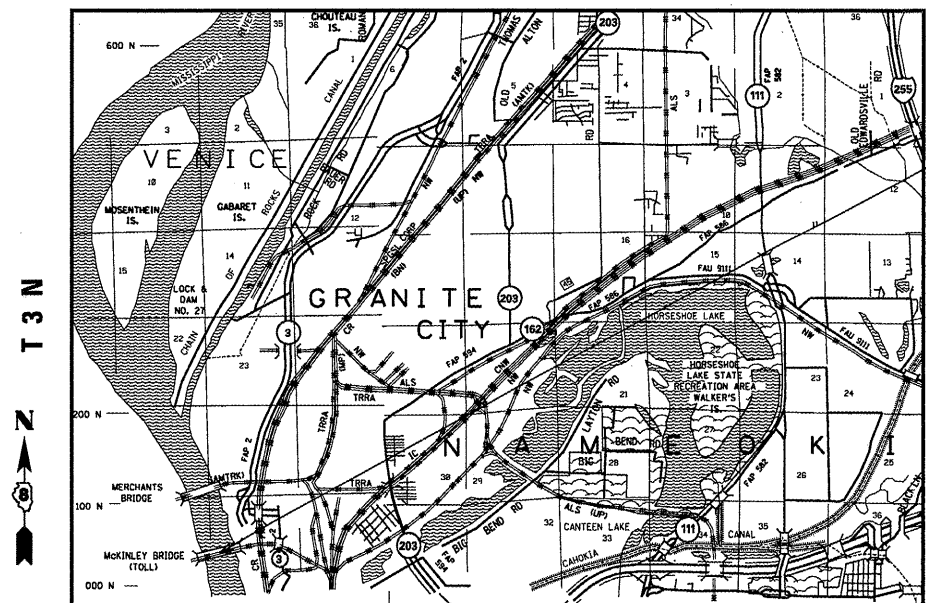
FOR INDEX OF SHEETS, SEE SHEET NO. 2

D-98-088-10



FULL SIZE PLANS HAVE BEEN PREPARED USING STANDARD ENGINEERING SCALES. REDUCED SIZED PLANS WILL NOT CONFORM TO STANDARD SCALES. IN MAKING MEASUREMENTS ON REDUCED PLANS, THE ABOVE SCALES MAY BE USED.

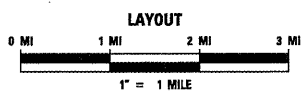
J.U.L.I.E.
JOINT UTILITY LOCATION INFORMATION FOR EXCAVATION
1-800-892-0123
OR 811



PROJECT LOCATION

T 3 N
N

R 10 W



LATITUDE = 38.917167
LONGITUDE = 90.957278

PROJECT ENGINEER: PATTI LEBEAU (618) 346-3179
PROJECT MANAGER: ART MUEHLFELD (618) 346-3209

CONTRACT NO. 76E19

STATE OF ILLINOIS
DEPARTMENT OF TRANSPORTATION
DIVISION OF HIGHWAYS

SUBMITTED *February 16 20 11*
May C. Jamel
DEPUTY DIRECTOR OF HIGHWAYS, REGION 5 ENGINEER

March 05 20 11
Scott E. Stitt, P.E.
ENGINEER OF DESIGN AND ENVIRONMENT

March 05 20 11
Christine M. Reed
DIRECTOR OF HIGHWAYS, CHIEF ENGINEER

PRINTED BY THE AUTHORITY
OF THE STATE OF ILLINOIS