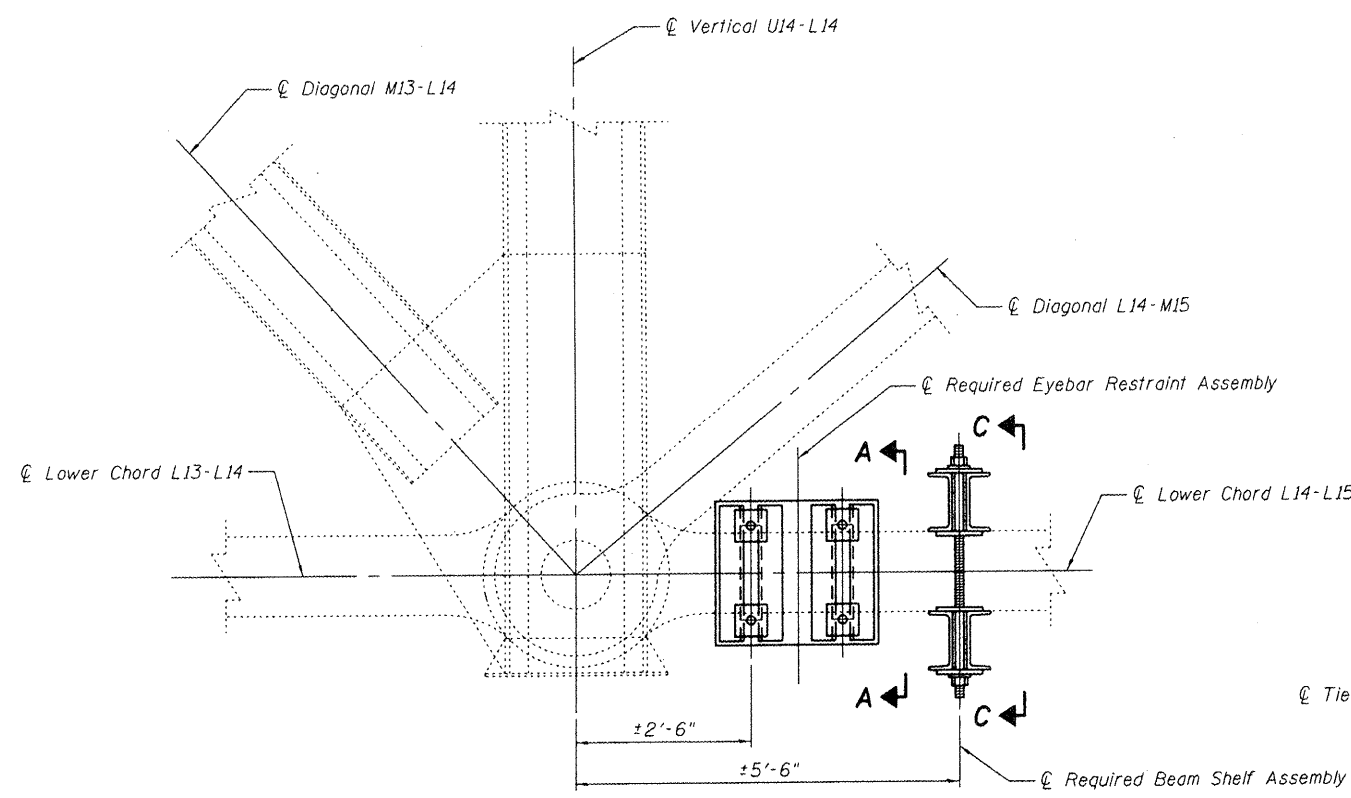
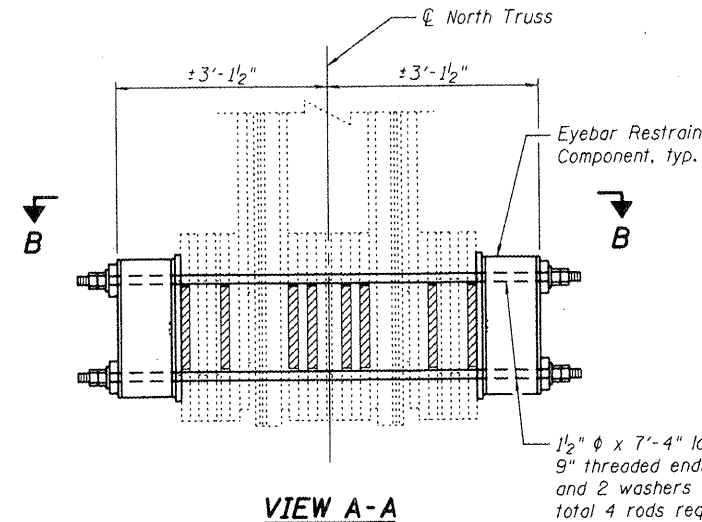


STATE OF ILLINOIS  
DEPARTMENT OF TRANSPORTATION

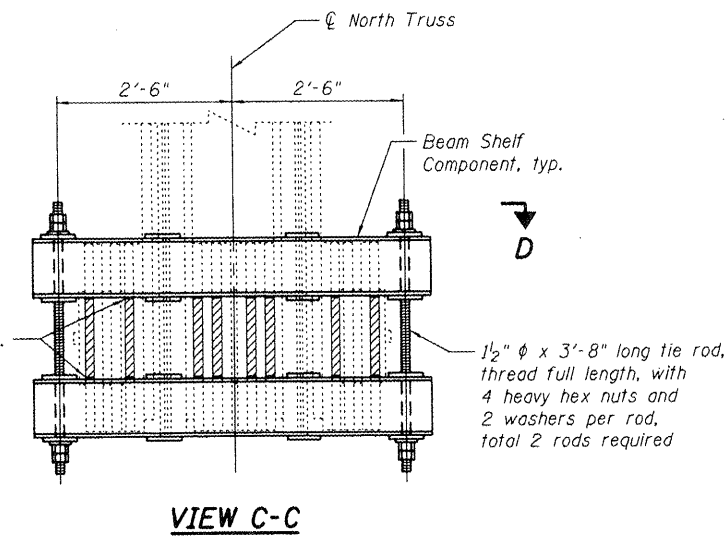


**EXISTING LOWER CHORD ELEVATION  
SPAN 27 AT JOINT L14 OF NORTH TRUSS**

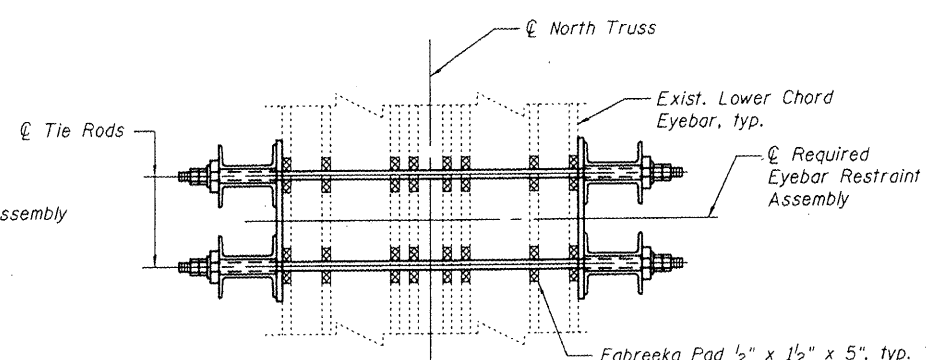


**VIEW A-A**

\* Fabreeka Pad 1/2" x 1/2" x 5", typ.

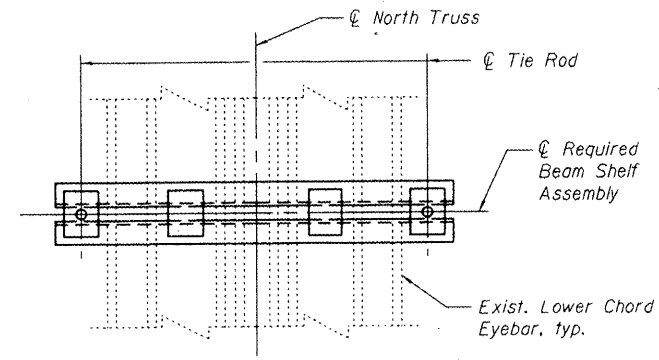


**VIEW C-C**



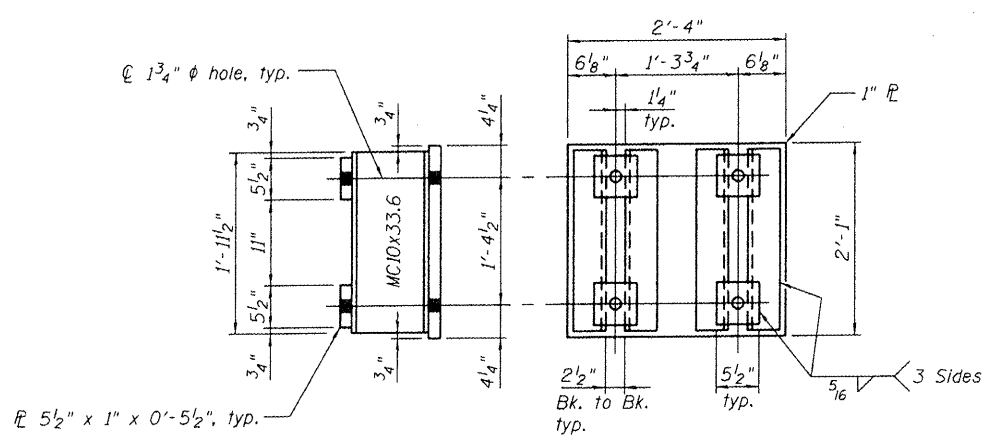
**VIEW B-B**

\* Adhere Fabreeka Pad to existing lower chord eyebars as shown with an approved epoxy adhesive. Cost shall be included with Furnishing and Erecting Structural Steel.

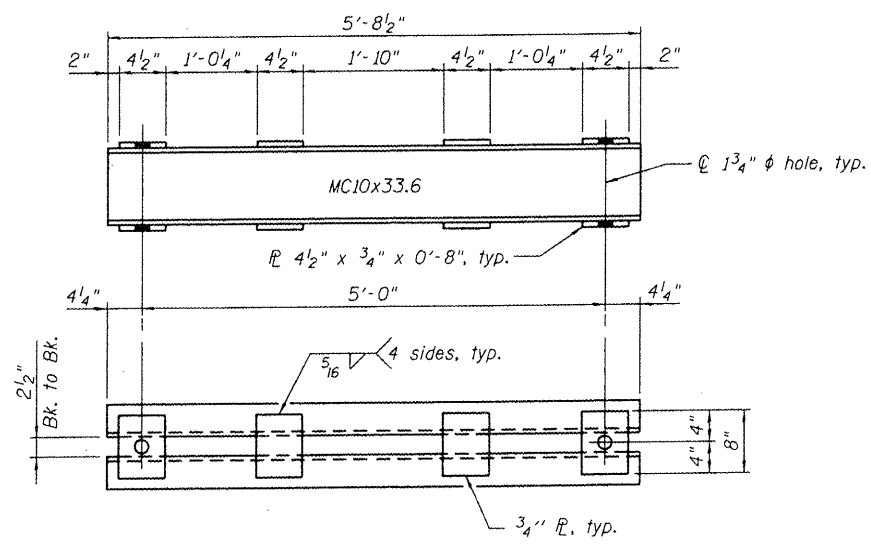


**VIEW D-D**

Notes:  
Tie rods shall be ASTM F1554 Grade 105 of the diameter and length specified. Cost shall be included with Furnishing and Erecting Structural Steel.  
Washers shall be flat circular F436 and nuts shall be heavy hex A563.



**EYEBAR RESTRAINT COMPONENT**  
2 Required



**BEAM SHELF COMPONENT**  
2 Required

**BILL OF MATERIAL**

ITEM	UNIT	TOTAL
Furnishing and Erecting Structural Steel	Pound	2034

**EYEBAR RESTRAINT DETAILS  
McKINLEY BRIDGE OVER MISSISSIPPI RIVER  
BETWEEN VENICE, ILLINOIS AND ST. LOUIS, MISSOURI  
MADISON COUNTY  
STRUCTURE NO. 060-6002**



DESIGNED - M.E.L.
CHECKED - D.W.P.
DRAWN - P.R.C.
CHECKED - M.E.L.

EXAMINED	200
PASSED	

11/23/2009

SHEET NO. 3	F.A.U. RTE. 9105	SECTION 119 BR-I	COUNTY MADISON	TOTAL SHEETS 6	SHEET NO. 5
4 SHEETS	SN 060-6002		CONTRACT NO. 76E19		
FED. ROAD DIST. NO. 7 ILLINOIS FED. AID PROJECT					