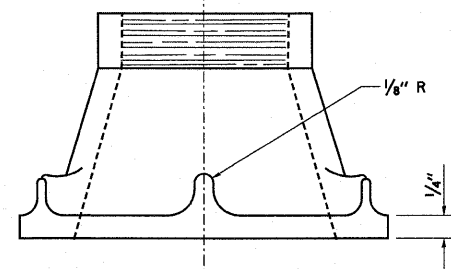
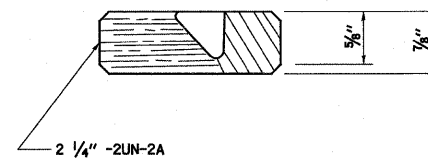
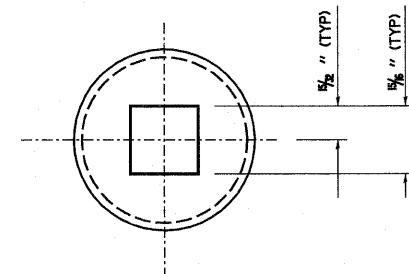


SECTION A-A



CAST IRON SURVEY
MONUMENT COVER



THREADED BRASS CAP

NOTES:

- ALL DIMENSIONS ARE IN INCHES.
- ALL RADII ARE 3/8" UNLESS SPECIFIED.
- ALL CHAMFERS ARE 45°.
- ROUND ALL SHARP EDGES.
- USE THREADS AND DIMENSIONS AS SPECIFIED OR EQUIVALENT WITH THE APPROVAL OF THE ENGINEER.
- THE SURVEY MONUMENT COVER ASSEMBLY SHOWN IS AN EXAMPLE. OTHER MODELS, SIMILAR IN DESIGN, MAY BE USED WITH THE APPROVAL OF THE ENGINEER.
- THE THREADS OF THE CAP AND COVER WILL BE COATED WITH PIPE TAPE OR PIPE THREAD COMPOUND PRIOR TO INSTALLATION.

| | | | | | | | | | | | | | |
|--|----------------------------|----------------|-------------------|---|------------------------------|--|--|-------------------------|----------------|---------------------------|--------------|--------------------|--|
| FILE NAME = | USER NAME = betaj | DESIGNED - ESW | REVISED - 3-22-11 | STATE OF ILLINOIS DEPARTMENT OF TRANSPORTATION | MISCELLANEOUS DETAILS | | | F.A.P. RTE. | SECTION | COUNTY | TOTAL SHEETS | SHEET NO. | |
| SI\Projects\409-0028-SHY IL 4 Lebanon 3P\dgn\CADD Sh | beta\087629-shy-mls.dgn | DRAWN - PDB | REVISED - | | | | | 314 | (110, 111)RS-4 | MADISON & ST CLAIR | 58 | 58 | |
| | PLOT SCALE = 1/8" = 1' IN. | CHECKED - BRM | REVISED - | | SCALE: 1"=20' | | | SHEET NO. 3 OF 3 SHEETS | | STA. | TO STA. | CONTRACT NO. 76E29 | |
| | PLOT DATE = 3/24/2011 | DATE - 11-1-10 | REVISED - | | | | | FED. ROAD DIST. NO. | | ILLINOIS FED. AID PROJECT | | | |