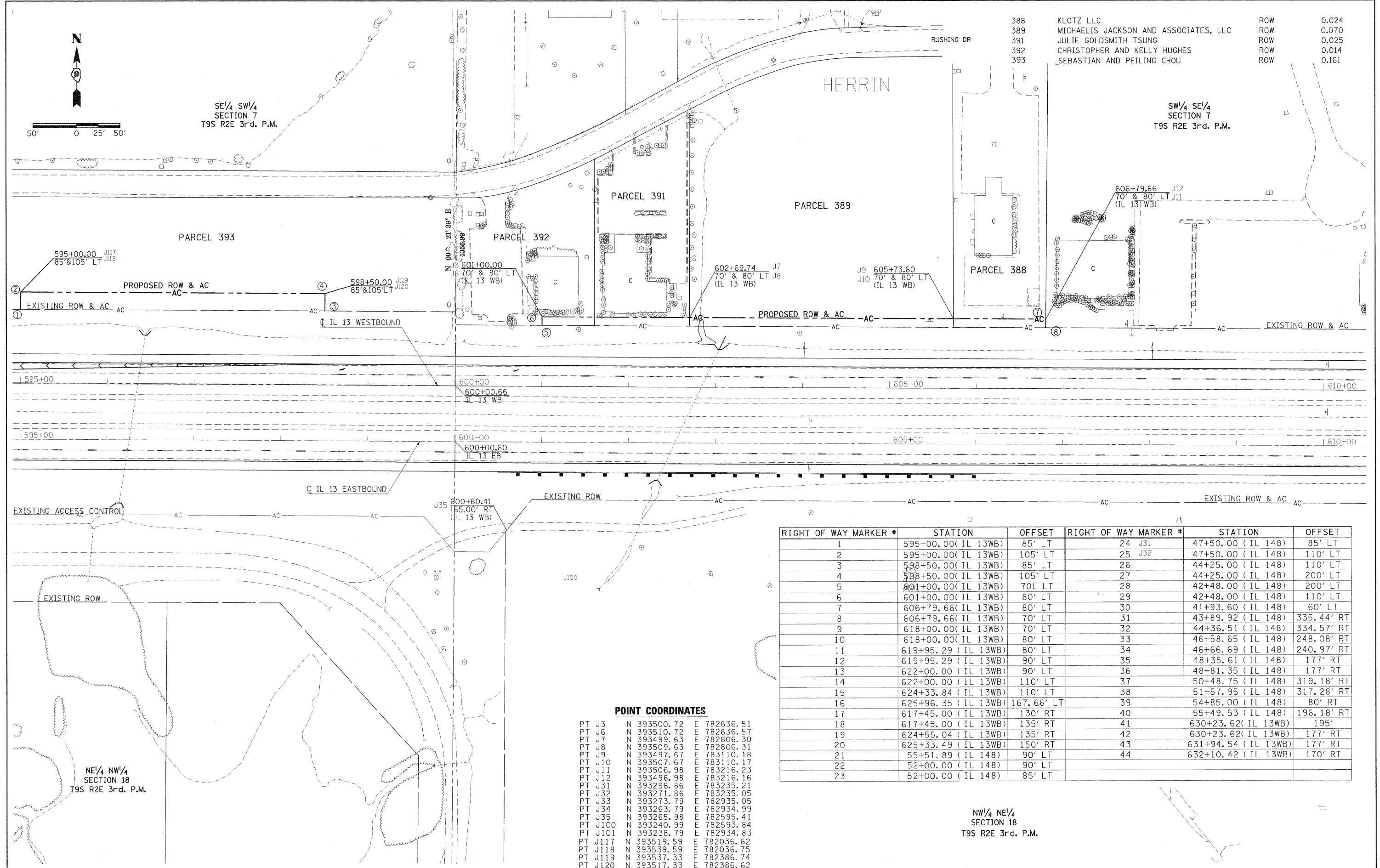


388	KLOTZ LLC	ROW	0.024
389	MICHAELIS JACKSON AND ASSOCIATES, LLC	ROW	0.070
391	JULIE GOLDSMITH TSUNG	ROW	0.025
392	CHRISTOPHER AND KELLY HUGHES	ROW	0.014
393	SEBASTIAN AND PEILING CHOU	ROW	0.161



RIGHT OF WAY MARKER #	STATION	OFFSET	RIGHT OF WAY MARKER #	STATION	OFFSET
1	595+00.00 (IL 13WB)	85' LT	24	J31 47+50.00 (IL 148)	85' LT
2	595+00.00 (IL 13WB)	105' LT	25	J32 47+50.00 (IL 148)	110' LT
3	598+50.00 (IL 13WB)	85' LT	26	44+25.00 (IL 148)	110' LT
4	598+50.00 (IL 13WB)	105' LT	27	44+25.00 (IL 148)	200' LT
5	601+00.00 (IL 13WB)	70' LT	28	42+48.00 (IL 148)	200' LT
6	601+00.00 (IL 13WB)	80' LT	29	42+48.00 (IL 148)	110' LT
7	606+79.66 (IL 13WB)	80' LT	30	41+93.60 (IL 148)	60' LT
8	606+79.66 (IL 13WB)	70' LT	31	43+89.92 (IL 148)	335.44' RT
9	618+00.00 (IL 13WB)	70' LT	32	44+36.51 (IL 148)	334.57' RT
10	618+00.00 (IL 13WB)	80' LT	33	46+58.65 (IL 148)	248.08' RT
11	619+95.29 (IL 13WB)	80' LT	34	46+66.69 (IL 148)	240.97' RT
12	619+95.29 (IL 13WB)	90' LT	35	48+35.61 (IL 148)	177' RT
13	622+00.00 (IL 13WB)	90' LT	36	48+81.35 (IL 148)	177' RT
14	622+00.00 (IL 13WB)	110' LT	37	50+48.75 (IL 148)	319.18' RT
15	624+33.84 (IL 13WB)	110' LT	38	51+57.95 (IL 148)	317.28' RT
16	625+96.35 (IL 13WB)	167.66' LT	39	54+85.00 (IL 148)	80' RT
17	617+45.00 (IL 13WB)	130' RT	40	55+49.53 (IL 148)	196.18' RT
18	617+45.00 (IL 13WB)	135' RT	41	630+23.62 (IL 13WB)	195'
19	624+55.04 (IL 13WB)	135' RT	42	630+23.62 (IL 13WB)	177' RT
20	625+33.49 (IL 13WB)	150' RT	43	631+94.54 (IL 13WB)	177' RT
21	55+51.89 (IL 148)	90' LT	44	632+10.42 (IL 13WB)	170' RT
22	52+00.00 (IL 148)	90' LT			
23	52+00.00 (IL 148)	85' LT			

POINT COORDINATES

PT J3	N	393500.72	E	782636.51
PT J6	N	393510.72	E	782636.57
PT J7	N	393499.63	E	782806.30
PT J8	N	393509.63	E	782806.31
PT J9	N	393497.67	E	783110.18
PT J10	N	393507.67	E	783110.17
PT J11	N	393506.98	E	783216.23
PT J12	N	393496.98	E	783216.16
PT J31	N	393296.86	E	783235.21
PT J32	N	393271.86	E	783235.05
PT J33	N	393273.79	E	782935.05
PT J34	N	393263.79	E	782934.99
PT J35	N	393265.98	E	782595.41
PT J100	N	393240.99	E	782593.84
PT J101	N	393238.79	E	782934.83
PT J117	N	393519.59	E	782036.62
PT J118	N	393539.59	E	782036.75
PT J119	N	393537.33	E	782386.74
PT J120	N	393517.33	E	782386.62

NW/4 NE/4 SECTION 18 T9S R2E 3rd. P.M.