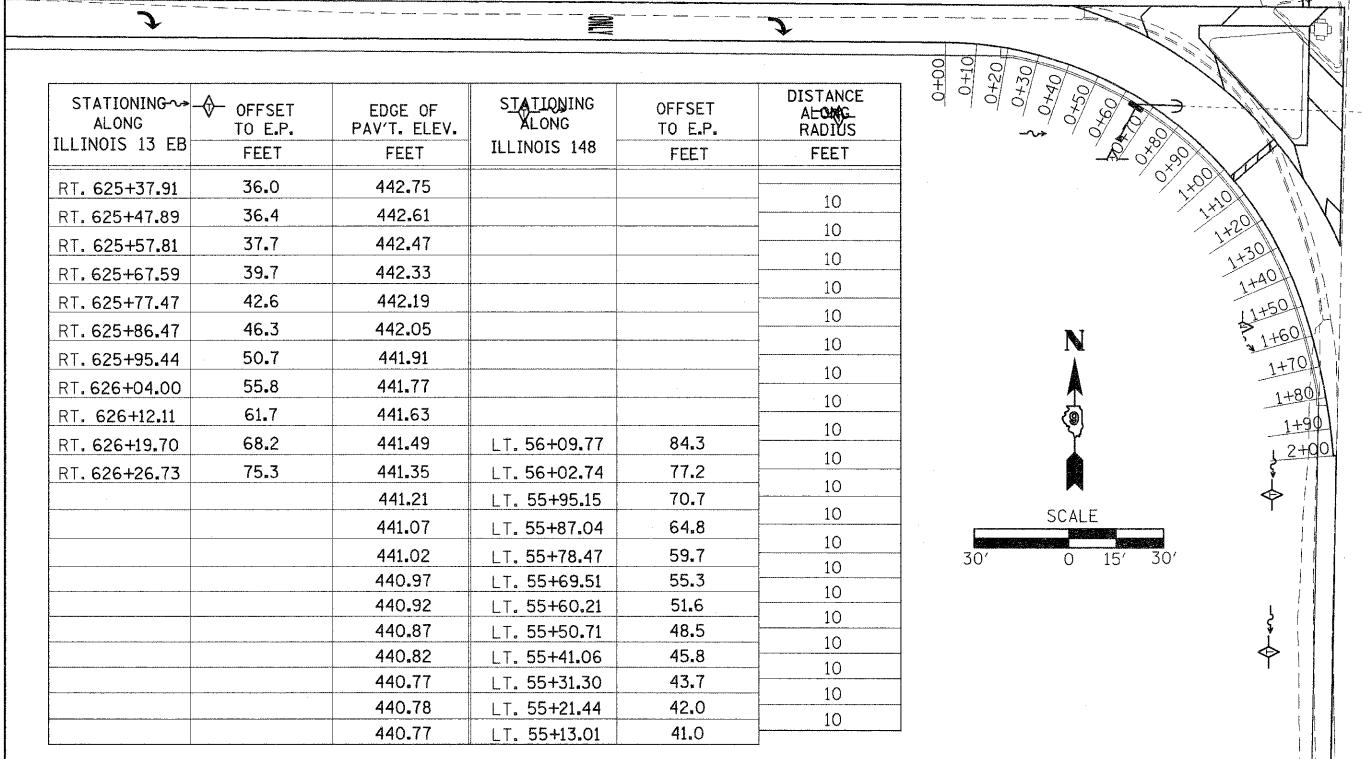
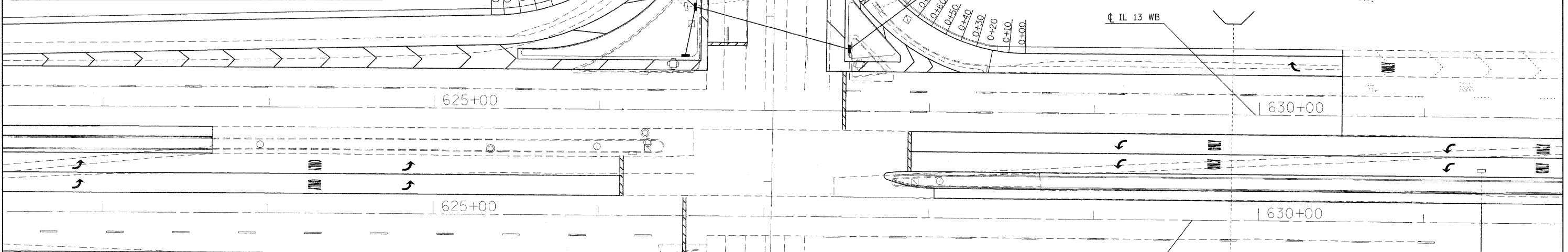


STATIONING ALONG ILLINOIS 148	OFFSET TO E.P. FEET	EDGE OF PAV'T. ELEV. FEET	STATIONING ALONG ILLINOIS 13 WB	OFFSET TO E.P. FEET	DISTANCE ALONG RADIUS FEET
LT. 59+18.5	44.0	442.15			10
LT. 59+08.5	44.4	442.09			10
LT. 58+98.6	45.7	442.00			10
LT. 58+88.8	47.7	441.92			10
LT. 58+79.2	50.6	441.81			10
LT. 58+69.9	54.3	441.64			10
LT. 58+60.9	58.7	441.46			10
LT. 58+52.4	63.8	441.29			10
LT. 58+44.3	69.7	441.34			10
LT. 58+36.7	76.2	441.35			10
		441.35	LT. 626+14.6	87.1	10
		441.35	LT. 626+06.8	80.7	10
		441.48	LT. 625+98.6	75.0	10
		441.62	LT. 625+89.9	70.0	10
		441.78	LT. 625+80.9	65.8	10
		441.96	LT. 625+71.6	62.3	10
		442.14	LT. 625+61.9	59.7	10
		442.32	LT. 625+52.1	57.8	10
		442.46	LT. 625+42.2	56.7	10
		442.62	LT. 625+34.4	56.5	7.5

STATIONING ALONG ILLINOIS 13 WB	OFFSET TO E.P. FEET	EDGE OF PAV'T. ELEV. FEET	STATIONING ALONG ILLINOIS 148	OFFSET TO E.P. FEET	DISTANCE ALONG RADIUS FEET
LT. 628+57.8	36.0	440.82			10
LT. 628+47.8	36.4	440.77			10
LT. 628+37.9	37.8	440.83			10
LT. 628+28.1	40.1	440.89			10
LT. 628+18.7	43.2	440.94			10
LT. 628+09.5	47.2	441.00			10
LT. 628+00.7	51.9	441.06			10
LT. 627+92.4	57.5	441.12			10
LT. 627+84.64	63.8	441.19			10
		441.30	RT. 58+13.9	72.0	10
		441.41	RT. 58+21.5	65.5	10
		441.52	RT. 58+29.7	59.7	10
		441.63	RT. 58+38.3	54.7	10
		441.74	RT. 58+47.4	50.5	10
		441.85	RT. 58+56.8	47.1	10
		441.96	RT. 58+66.5	44.6	10
		442.07	RT. 58+76.3	42.8	10
		442.18	RT. 58+86.2	41.5	10
		442.29	RT. 58+96.2	40.7	10



STATIONING ALONG ILLINOIS 13 EB	OFFSET TO E.P. FEET	EDGE OF PAV'T. ELEV. FEET	STATIONING ALONG ILLINOIS 148	OFFSET TO E.P. FEET	DISTANCE ALONG RADIUS FEET
RT. 625+37.91	36.0	442.75			10
RT. 625+47.89	36.4	442.61			10
RT. 625+57.81	37.7	442.47			10
RT. 625+67.59	39.7	442.33			10
RT. 625+77.47	42.6	442.19			10
RT. 625+86.47	46.3	442.05			10
RT. 625+95.44	50.7	441.91			10
RT. 626+04.00	55.8	441.77			10
RT. 626+12.11	61.7	441.63			10
RT. 626+19.70	68.2	441.49	LT. 56+09.77	84.3	10
RT. 626+26.73	75.3	441.35	LT. 56+02.74	77.2	10
		441.21	LT. 55+95.15	70.7	10
		441.07	LT. 55+87.04	64.8	10
		441.02	LT. 55+78.47	59.7	10
		440.97	LT. 55+69.51	55.3	10
		440.92	LT. 55+60.21	51.6	10
		440.87	LT. 55+50.71	48.5	10
		440.82	LT. 55+41.06	45.8	10
		440.77	LT. 55+31.30	43.7	10
		440.78	LT. 55+21.44	42.0	10
		440.77	LT. 55+13.01	41.0	10

STATIONING ALONG ILLINOIS 148	OFFSET TO E.P. FEET	EDGE OF PAV'T. ELEV. FEET	STATIONING ALONG ILLINOIS 13 EB	OFFSET TO E.P. FEET	DISTANCE ALONG RADIUS FEET
RT. 55+03.8	44.0	440.30			10
RT. 55+13.8	44.4	440.36			10
RT. 55+23.7	45.7	440.41			10
RT. 55+33.5	47.7	440.43			10
RT. 55+43.0	50.6	440.41			10
RT. 55+52.3	54.3	440.37			10
RT. 55+61.3	58.7	440.31			10
RT. 55+69.9	63.8	440.24			10
RT. 55+77.9	69.7	440.21			10
RT. 55+85.6	76.2	440.18			10
		440.11	RT. 627+87.5	87.1	10
		440.05	RT. 627+95.2	80.7	10
		440.10	RT. 628+03.4	75.0	10
		440.17	RT. 628+12.1	70.0	10
		440.27	RT. 628+21.1	65.8	10
		440.39	RT. 628+30.5	62.3	10
		440.50	RT. 628+40.2	59.7	10
		440.46	RT. 628+49.9	57.8	10
		440.61	RT. 628+59.9	56.7	10
		440.65	RT. 628+67.5	56.5	7.5

