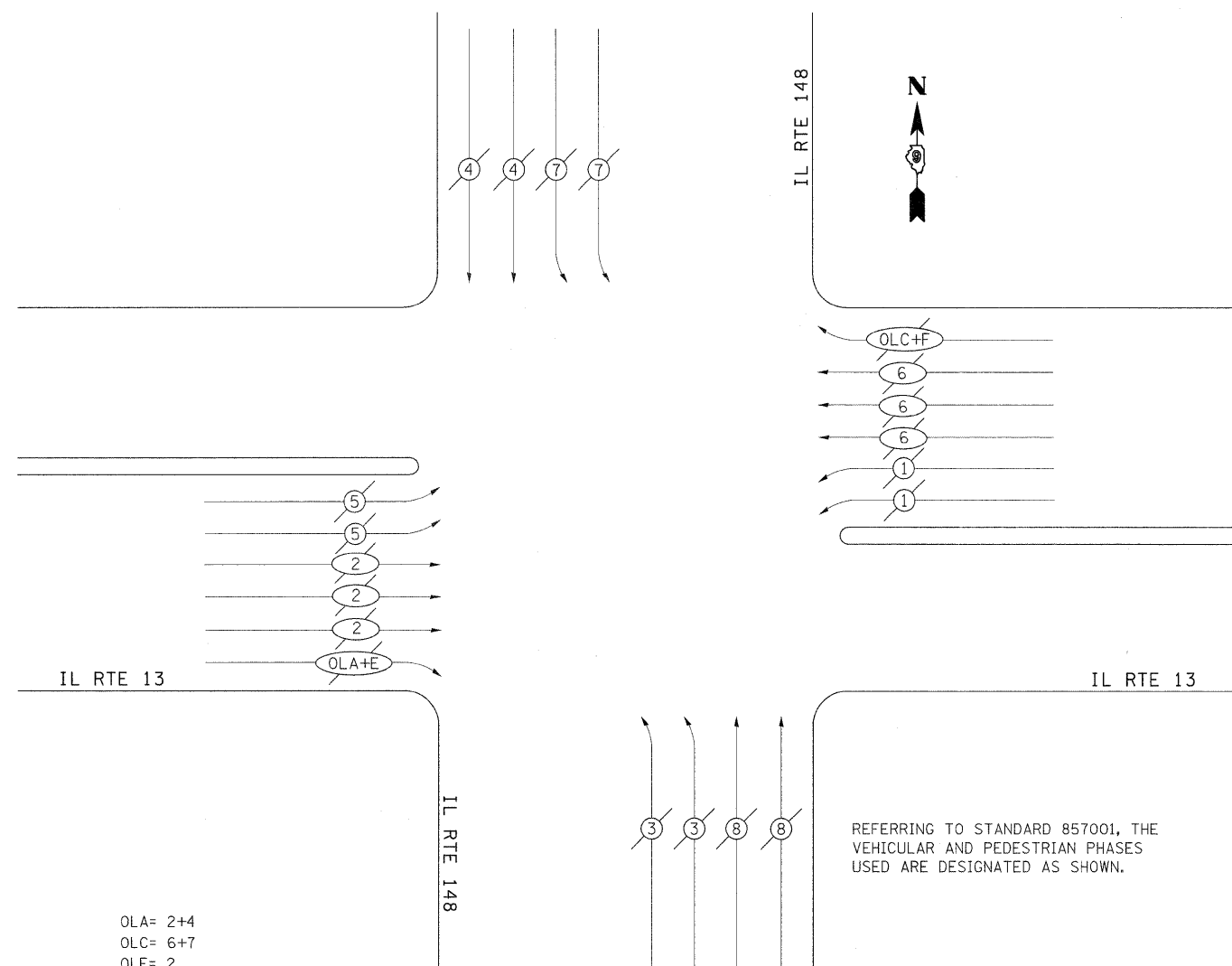


**PHASE DESIGNATION DIAGRAM
IL RTE 13 WITH IL RTE 148**



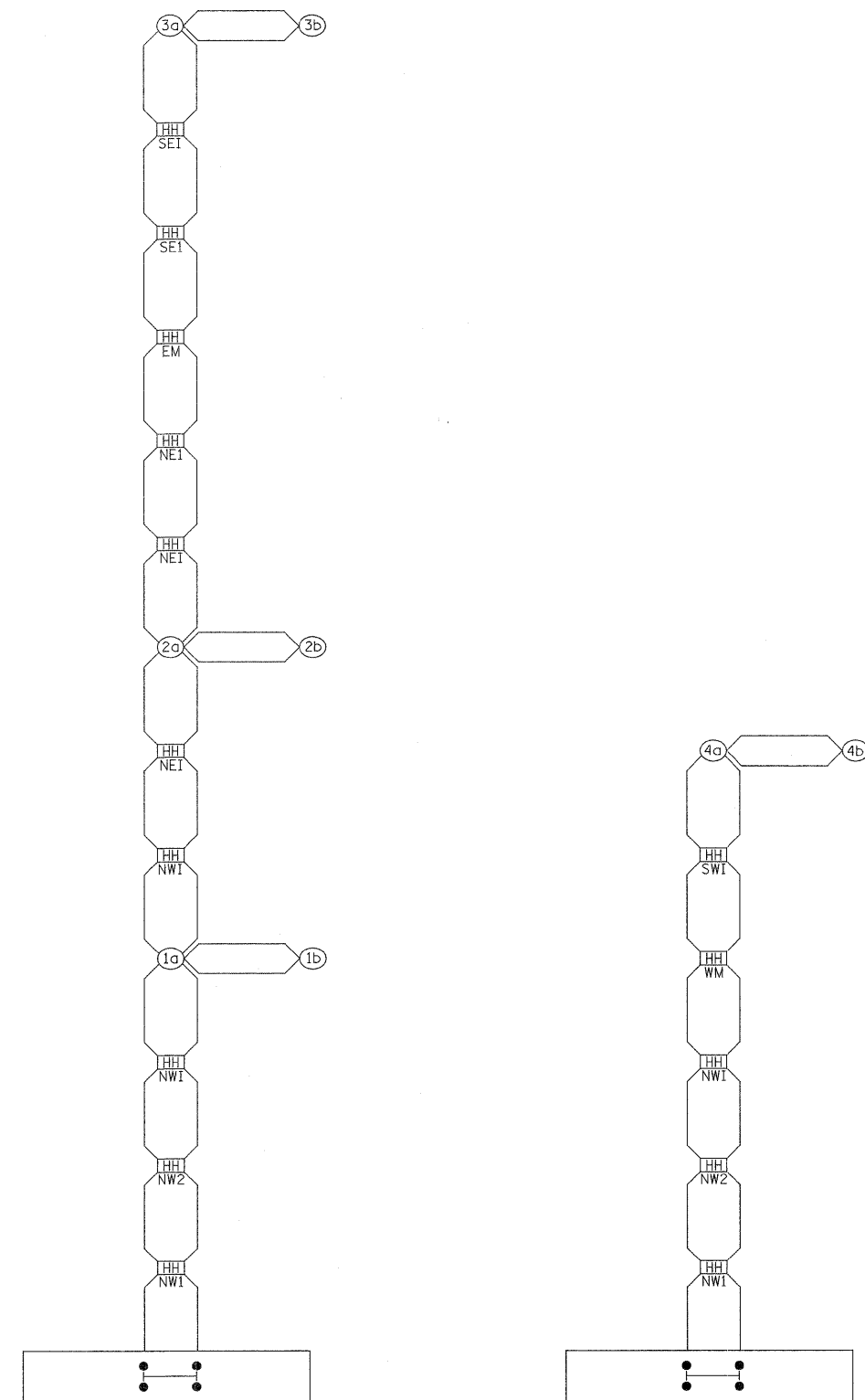
OLA= 2+4
OLC= 6+7
OLE= 2
OLF= 6

LEGEND

- ⊙ VEHICULAR MOVEMENT
- ⊙ PEDESTRIAN MOVEMENT
- * NUMBER REFERS TO ASSOCIATED PHASE

FILE NAME = c:\pwworking\pwworking\projects\78133\13-148.dgn

**PROPOSED CONTROL INSTALLATION
100 AMP - 240 VOLT**



- NW1 NORTHWEST CORNER
STA 625+65.00, 120.00' LT (IL 13 WB)
- NW2 NORTHWEST CORNER
STA 626+00.12, 87.05' LT (IL 13 WB)
- NWI NORTHWEST ISLAND
STA 626+45.34, 44.63' LT (IL 13 WB)
- NEI NORTHEAST ISLAND
STA 627+55.00, 50.00' LT (IL 13 WB)
- NE1 NORTHEAST CORNER
STA 628+22.09, 50.00' LT (IL 13 WB)
- EM EAST MEDIAN
STA 628+22.09, 41.58' RT (IL 13 WB)
- SE1 SOUTHEAST CORNER
STA 628+14.22, 79.86' LT (IL 13 EB)
- SEI SOUTHEAST ISLAND
STA 627+56.49, 44.43' RT (IL 13 EB)
- WM1 WEST MEDIAN
STA 625+93.97, 42.92' LT (IL 13 EB)
- WM2 WEST MEDIAN
STA 626+25.00, 43.00' LT (IL 13 EB)
- SW1 SOUTHWEST ISLAND
STA 626+25.00, 40.00' RT (IL 13 EB)

REVISIONS	
DRAWN	1-31-90
REVISED	5-30-90
REVISED	12-18-01
REVISED	3-27-08

STD. 9-66

**STATE OF ILLINOIS
DEPARTMENT OF TRANSPORTATION**

**PHASE DESIGNATION
DIAGRAM**

SCALE: SHEET NO. OF SHEETS STA. TO STA.

F.A.P. RTE.	SECTION	COUNTY	TOTAL SHEETS	SHEET NO.
331	(I-3,I-2)N-1,TS-1	WILLIAMSON	257	106
CONTRACT NO. 78133				
ILLINOIS FED. AID PROJECT				