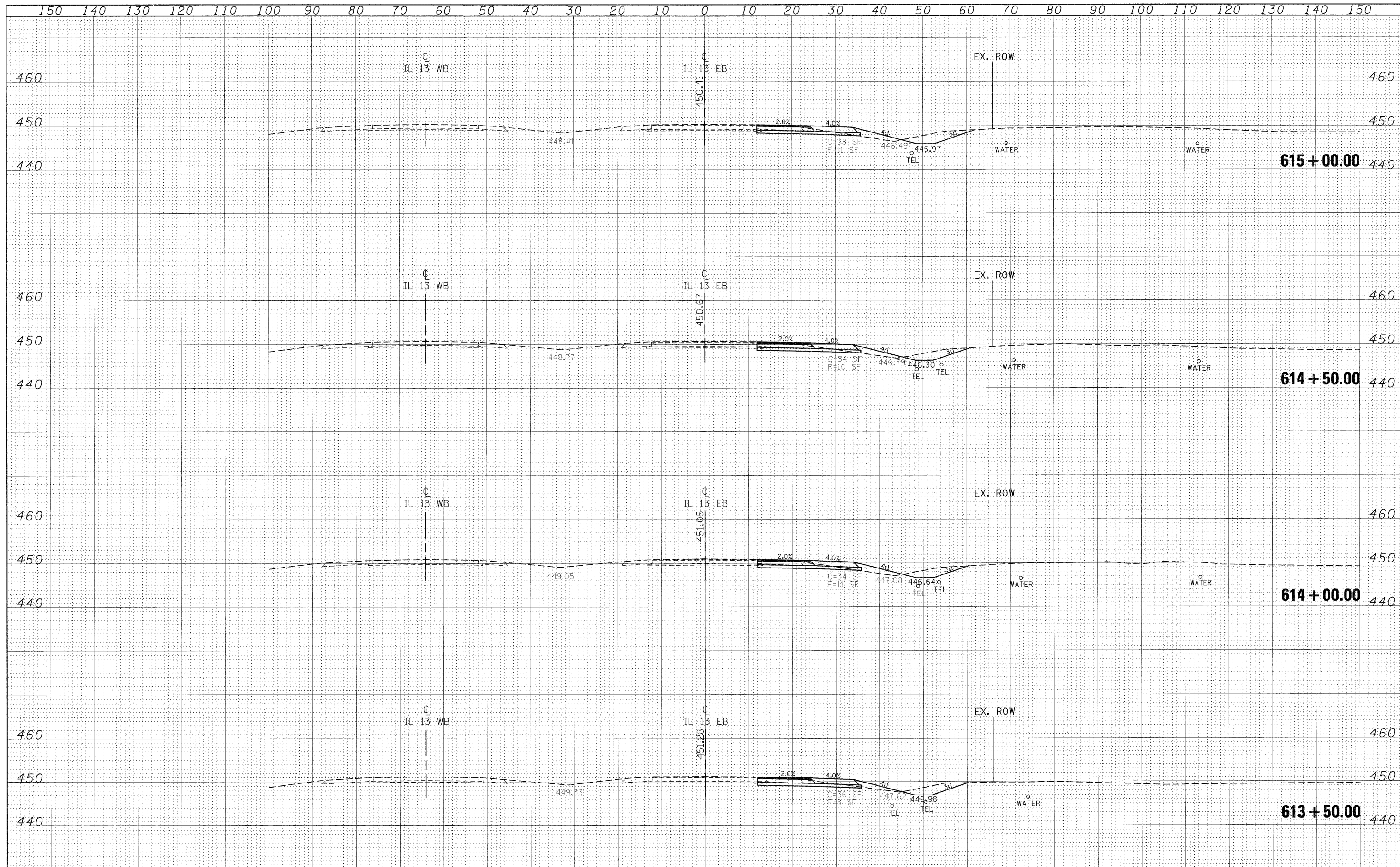


DATE	
BY	
DESIGNED	
DRAWN	
CHECKED	
DATE	
BY	
DESIGNED	
DRAWN	
CHECKED	
DATE	
BY	
DESIGNED	
DRAWN	
CHECKED	
DATE	
BY	
DESIGNED	
DRAWN	
CHECKED	
DATE	

DATE	
BY	
DESIGNED	
DRAWN	
CHECKED	
DATE	
BY	
DESIGNED	
DRAWN	
CHECKED	
DATE	
BY	
DESIGNED	
DRAWN	
CHECKED	
DATE	
BY	
DESIGNED	
DRAWN	
CHECKED	
DATE	



FILE NAME =	USER NAME = knightsm	DESIGNED -	REVISED -	STATE OF ILLINOIS DEPARTMENT OF TRANSPORTATION	IL 13 EASTBOUND CROSS SECTIONS	F.A.P. RTE.	SECTION	COUNTY	TOTAL SHEETS	SHEET NO.	
os:\pw\work\p\dot\knightsm\08135592\78133-shr-ec-r113eb.dgn	PLOT SCALE = 10,0000' / IN.	DRAWN -	REVISED -			331	(I-3,I-2)N-1,TS-1	WILLIAMSON	251	128	
	PLOT DATE = 1/3/2011	CHECKED -	REVISED -			CONTRACT NO. 78133		ILLINOIS FED. AID PROJECT			
		DATE -	REVISED -			SCALE: 1"=10'	SHEET NO. OF SHEETS	STA. 613+50.00 TO STA. 615+00.00			