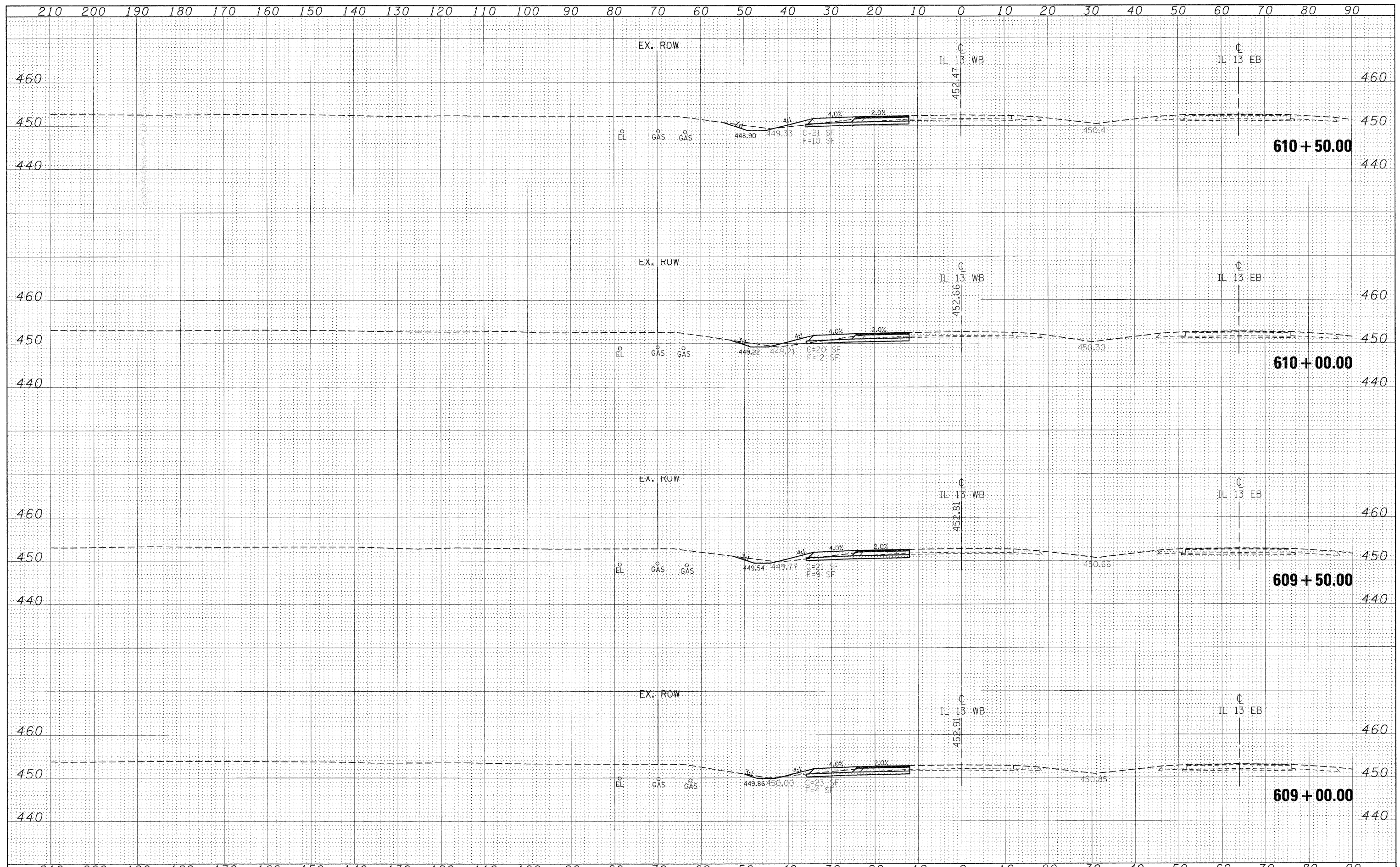


| | |
|-----------|--|
| DATE | |
| BY | |
| DESIGNED | |
| DRAWN | |
| CHECKED | |
| REVISIONS | |
| NO. | |

| | |
|-----------|--|
| DATE | |
| BY | |
| DESIGNED | |
| DRAWN | |
| CHECKED | |
| REVISIONS | |
| NO. | |



| | | | | | | | | | | | |
|---|------------------------------|------------|-----------|---|---|--------------------|----------------------|----------------------------------|--------------|-----------|--|
| FILE NAME = | USER NAME = knightam | DESIGNED - | REVISED - | STATE OF ILLINOIS DEPARTMENT OF TRANSPORTATION | IL 13 WESTBOUND CROSS SECTIONS | F.A.P. RTE. | SECTION | COUNTY | TOTAL SHEETS | SHEET NO. | |
| c:\pwork\pwork\knightam\0135592\78133-sht-xsc-r13wb.dgn | PLOT SCALE = 10.0000' / 1IN. | DRAWN - | REVISED - | | | 331 | (I-3, I-21N-1, TS-1) | WILLIAMSON | 251 | 147 | |
| 78133\CADsheets\78133-sht-xsc-r13wb.dgn | PLOT DATE = 1/3/2011 | CHECKED - | REVISED - | | | CONTRACT NO. 78133 | | ILLINOIS FED. AID PROJECT | | | |
| | | DATE - | REVISED - | | | SCALE: 1"=10' | SHEET NO. OF SHEETS | STA. 609+00.00 TO STA. 610+50.00 | | | |