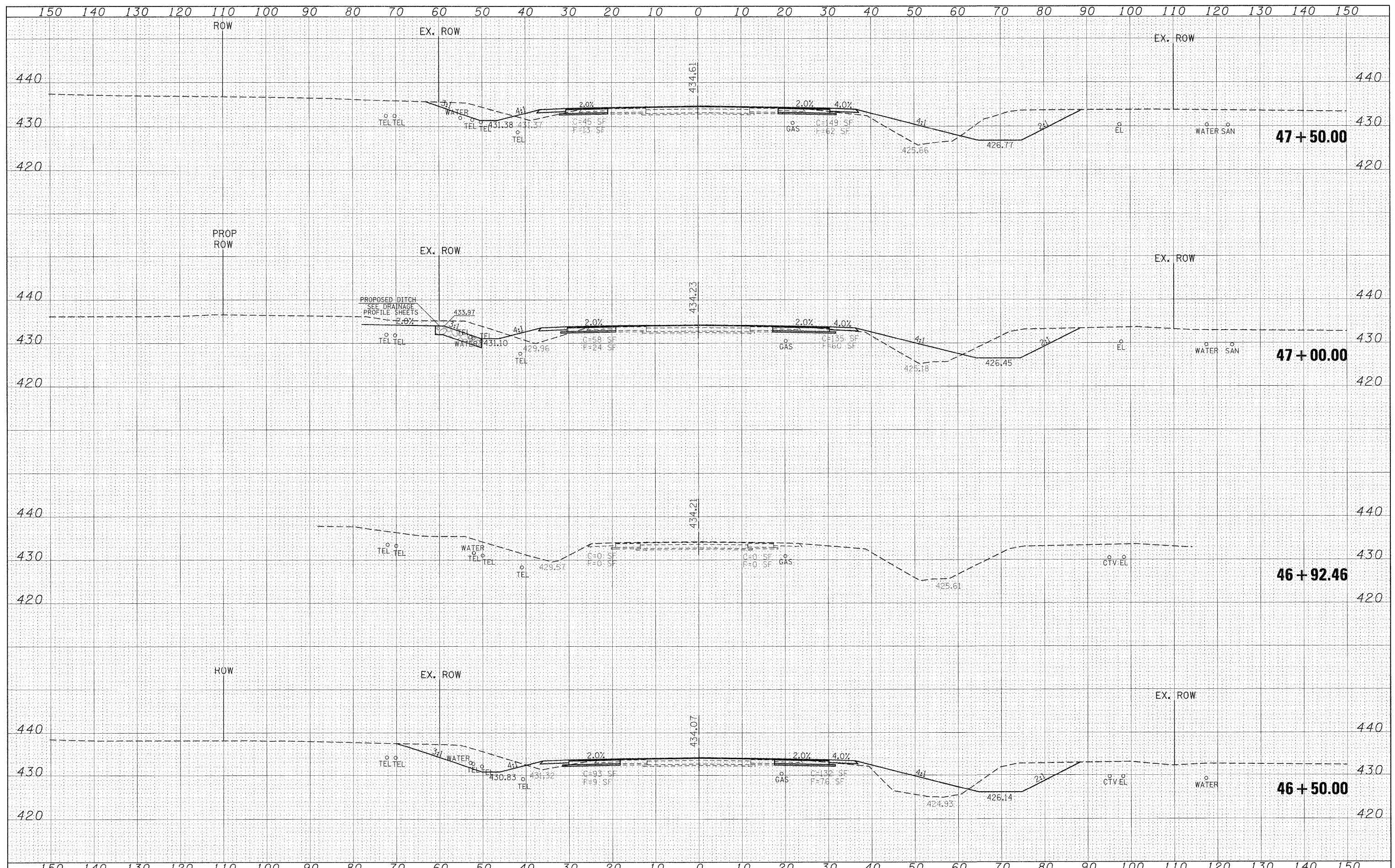


DATE	
BY	
FINAL SURVEY	SURVEYED
NOTE BOOK	PLOTTED
NO.	TEMPLATE
	AREAS CHECKED

DATE	
BY	
ORIGINAL SURVEY	SURVEYED
NOTE BOOK	PLOTTED
NO.	TEMPLATE
	AREAS CHECKED



FILE NAME =	USER NAME = knights	DESIGNED -	REVISED -	STATE OF ILLINOIS DEPARTMENT OF TRANSPORTATION	ILLINOIS 148 CROSS SECTIONS			F.A.P. RTE.	SECTION	COUNTY	TOTAL SHEETS	SHEET NO.
c:\px_work\pwidot\knights\40135592\78133-sht-rs-r1148.dgn		DRAWN -	REVISED -		331	(I-3, I-2N-1, TS-1)	WILLIAMSON	251	165			
		CHECKED -	REVISED -		CONTRACT NO. 78133							
78133/CAD/sheets/78133-sht-xsc-r1148.dgn		DATE -	REVISED -		SCALE: 1"=10'	SHEET NO.	OF SHEETS	STA. 45+50.00 TO STA. 47+50.00	ILLINOIS FED. AID PROJECT			