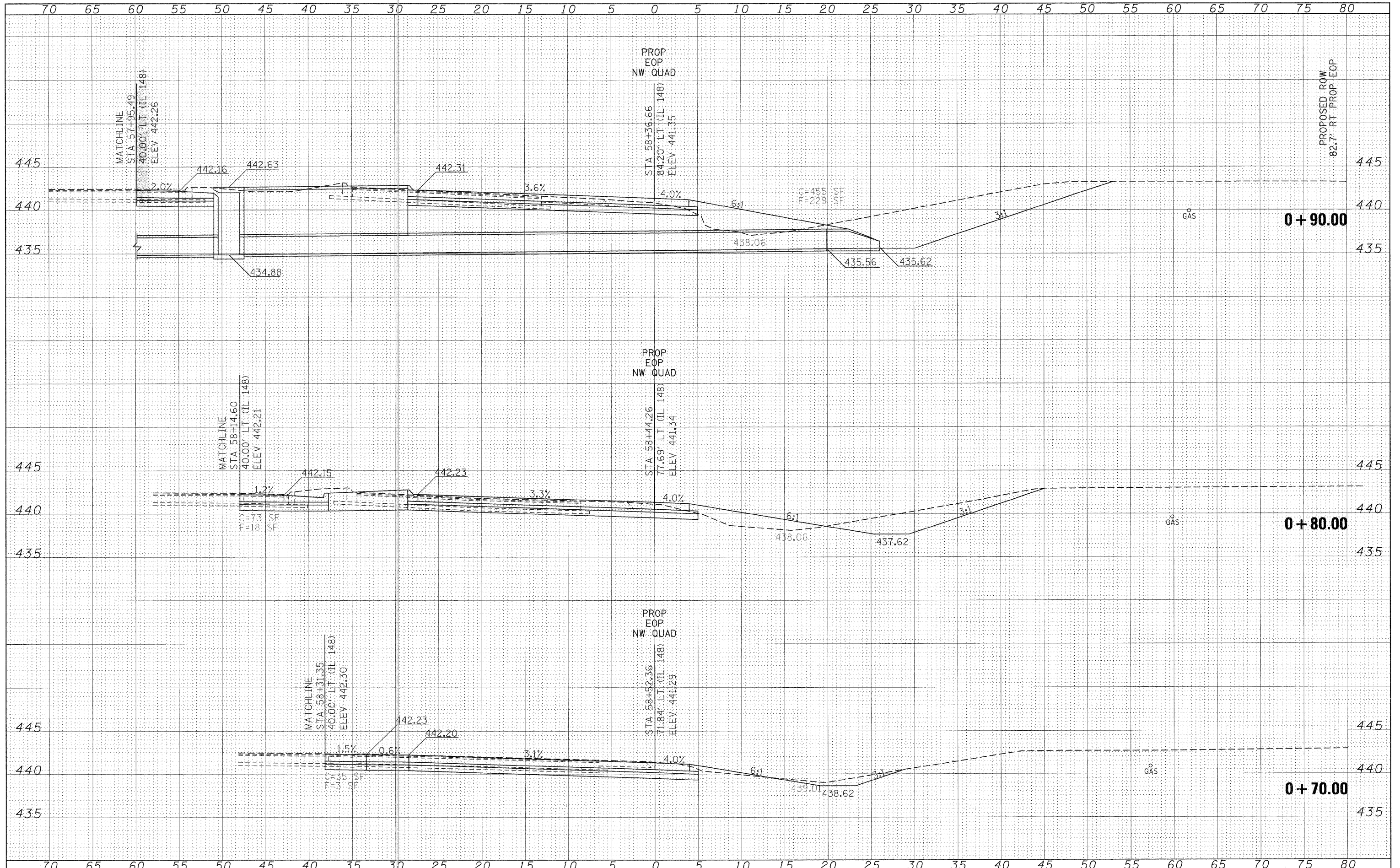


| | |
|--------------|---------------|
| BY | DATE |
| | |
| FINAL SURVEY | SURVEYED |
| NOTE BOOK | PLOTTED |
| NO. | AREAS CHECKED |

| | |
|-----------------|---------------|
| BY | DATE |
| | |
| ORIGINAL SURVEY | SURVEYED |
| NOTE BOOK | PLOTTED |
| NO. | AREAS CHECKED |



| | | | | | | | | | |
|--|---------------------|------------|-----------|---|---------------------------|-------------------|------------|--------------|----------------|
| FILE NAME = | USER NAME = knights | DESIGNED - | REVISED - | <p align="center">STATE OF ILLINOIS DEPARTMENT OF TRANSPORTATION</p> <p align="center">NORTHWEST QUADRANT OF IL 13 /148 INTERSECTION CROSS SECTIONS</p> | F.A.P. RTE. | SECTION | COUNTY | TOTAL SHEETS | SHEET NO. |
| cr:\pw\work\pwwork\knightsm\0819592\78133-sht-ec-quad.vdgn | | DRAWN - | REVISED - | | 331 | (I-3,I-2)N-1,TS-1 | WILLIAMSON | 251 | 183 |
| PLOT SCALE = 5,0000 ' / IN. | | CHECKED - | REVISED - | | CONTRACT NO. 78133 | | | | |
| PLOT DATE = 1/3/2011 | | DATE - | REVISED - | | ILLINOIS FED. AID PROJECT | | | | |
| | | | | | SCALE: 1"=5' | SHEET NO. | OF SHEETS | STA. +70.00 | TO STA. +90.00 |