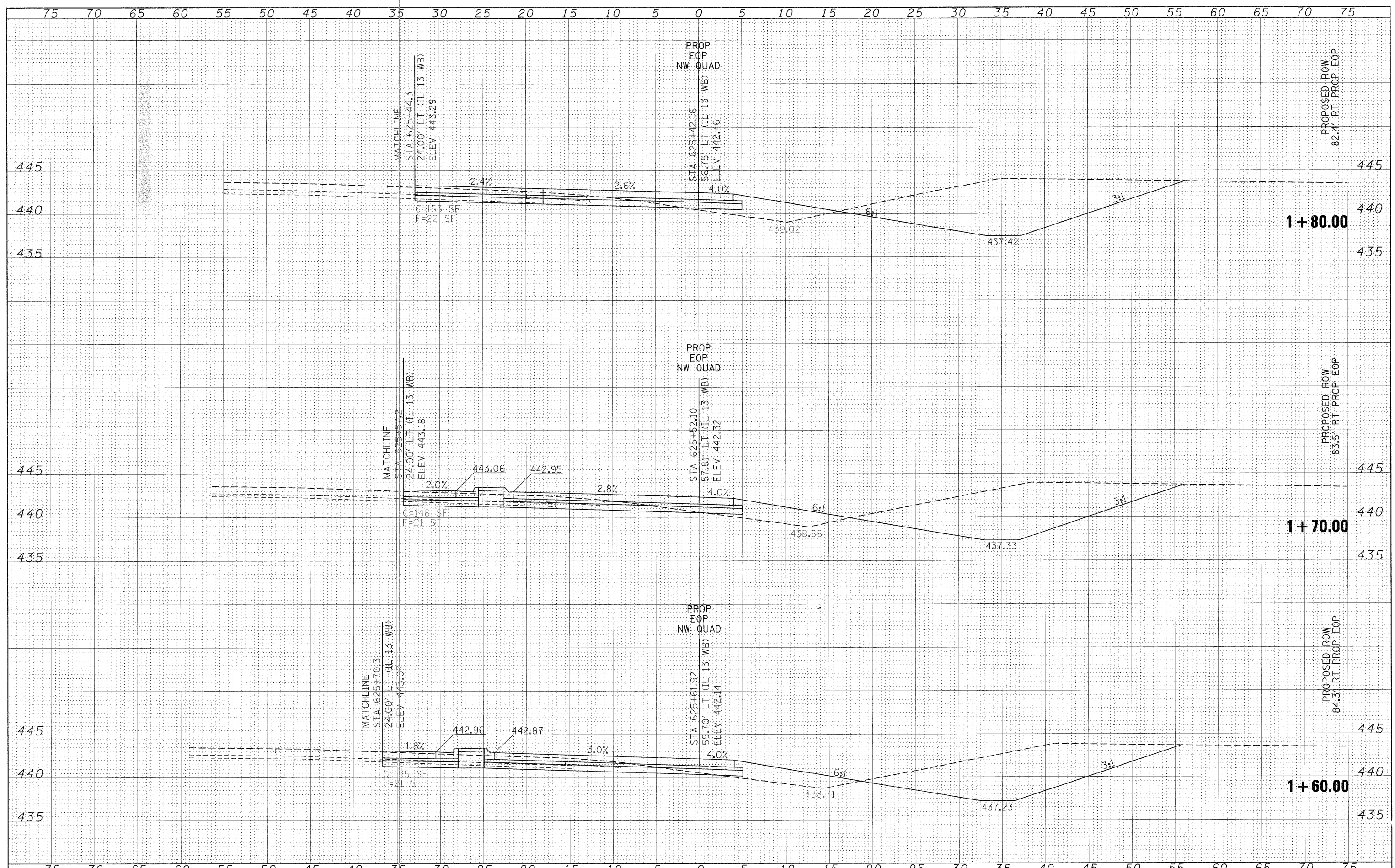


DATE	
BY	
FINAL SURVEY	SUBMITTED
NOTE BOOK	PLOTTED
NO.	TEMPLATE
	AREAS CHECKED

DATE	
BY	
ORIGINAL SURVEY	SUBMITTED
NOTE BOOK	PLOTTED
NO.	TEMPLATE
	AREAS CHECKED



FILE NAME =	USER NAME = knightm	DESIGNED -	REVISED -	<b>STATE OF ILLINOIS DEPARTMENT OF TRANSPORTATION</b>	<b>NORTHWEST QUADRANT OF IL 13 /148 INTERSECTION CROSS SECTIONS</b>			F.A.P. RTE.	SECTION	COUNTY	TOTAL SHEETS	SHEET NO.		
c:\pwwork\pwwork\knightm\d0135592\78133-sht-1.dgn		DRAWN -	REVISED -		SCALE: 1"=5'	SHEET NO.	OF SHEETS	STA. 1+60.00	TO STA. 1+80.00	331	(1-3,1-2N-1,TS-1)	WILLIAMSON	251	186
		PLOT SCALE = 5,0000' / IN.	REVISED -											
		PLOT DATE = 1/3/2011	REVISED -											
											CONTRACT NO. 78133		ILLINOIS FED. AID PROJECT	