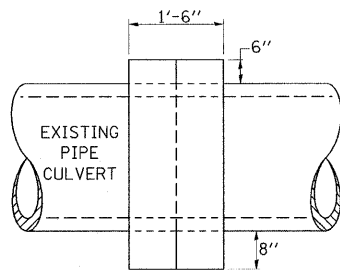
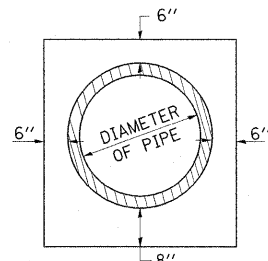


DETAILS OF CONCRETE COLLAR PIPE TO PIPE

PIPE TO PIPE



SIDE VIEW



END VIEW

TABULATION

DIAMETER OF PIPE	CL SI CONC CU YDS EST
12"	0.24
15"	0.29
18"	0.32
24"	0.44
30"	0.56
36"	0.66
42"	0.80
48"	0.93
54"	1.07
60"	1.22
72"	1.55

THE CONCRETE COLLAR SHALL BE PAID FOR AT THE CONTRACT UNIT PRICE PER CUBIC YARD FOR CONCRETE COLLAR, AS SHOWN ON THE PLANS, WHICH PRICE SHALL INCLUDE THE REMOVAL OF SUCH PORTIONS THE EXISTING HEADWALLS AS MAY BE REQUIRED.

CLASS SI CONCRETE SHALL BE USED THROUGHOUT.

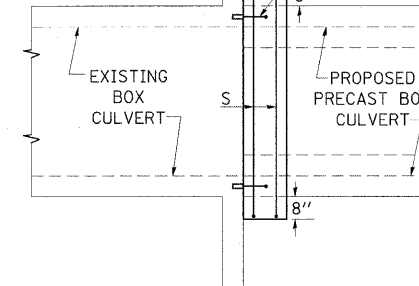
REVISIONS	
DRAWN	7-13-90
REVISED	8-22-94
REVISED	3-26-08
REVISED	

STD. 9-79

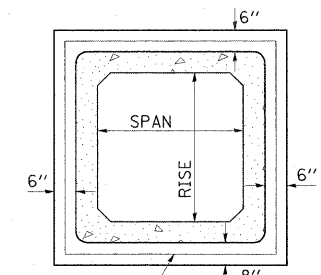
DETAILS OF CONCRETE COLLAR FOR PRECAST BOX CULVERT

REMOVE PORTION OF EXISTING HEADWALL DOWN TO 12" BELOW FINISHED GRADE

3/4"Ø X 18" EXPANSION BOLTS AT 18" CENTERS TYPICAL ALL FOUR SIDES. COST INCLUDED IN THE PROPOSED PRECAST BOX CULVERT. (SEE NOTE BELOW)



SIDE VIEW



END VIEW

2 - #5 S BARS TYPICAL
COST INCLUDED IN THE PROPOSED PRECAST BOX CULVERT.

TABULATION

(FOR INFORMATION PURPOSES ONLY)

SPAN X RISE	CLASS SI CONC. CU. YD. (EST.)
2' X 2'	0.26
3' X 2'	0.30
3' X 3'	0.34
4' X 2'	0.36
4' X 3'	0.39
4' X 4'	0.43
5' X 2'	0.41
5' X 3'	0.45
5' X 4'	0.49
6' X 2'	0.47
6' X 3'	0.51
6' X 4'	0.54

THE CONCRETE COLLAR SHALL BE CONSIDERED INCLUDED IN PRECAST CONCRETE BOX CULVERT, WHICH PRICE SHALL INCLUDE THE REMOVAL OF SUCH PORTIONS OF THE EXISTING HEADWALLS AS MAY BE REQUIRED. CLASS SI CONCRETE SHALL BE USED THROUGHOUT.

NOTE:

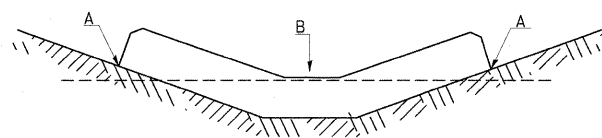
ANCHOR BOLTS, MEETING THE REQUIREMENTS OF ARTICLE 1006.09 OF THE STANDARD SPECIFICATIONS, SHALL EXTEND A MINIMUM OF 9 INCHES INTO THE NEW CONCRETE. EXPANSION SHIELDS SHALL PROVIDE A MINIMUM CERTIFIED PROOF LOAD OF 4080 POUNDS.

REVISIONS		
DRAWN	8-15-89	REVISED 12-17-01
REVISED	2-15-90	REVISED 3-26-08
REVISED	8-10-90	REVISED
REVISED	8-19-94	REVISED

STD. 9-45

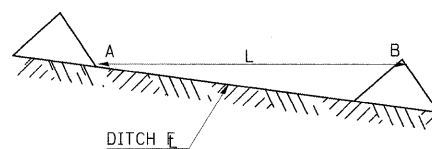
TEMPORARY DITCH CHECKS

PLACEMENT OF TEMPORARY DITCH CHECK IN DRAINAGE WAY



POINTS A SHOULD BE HIGHER THAN POINT B

SPACING BETWEEN TEMPORARY DITCH CHECKS



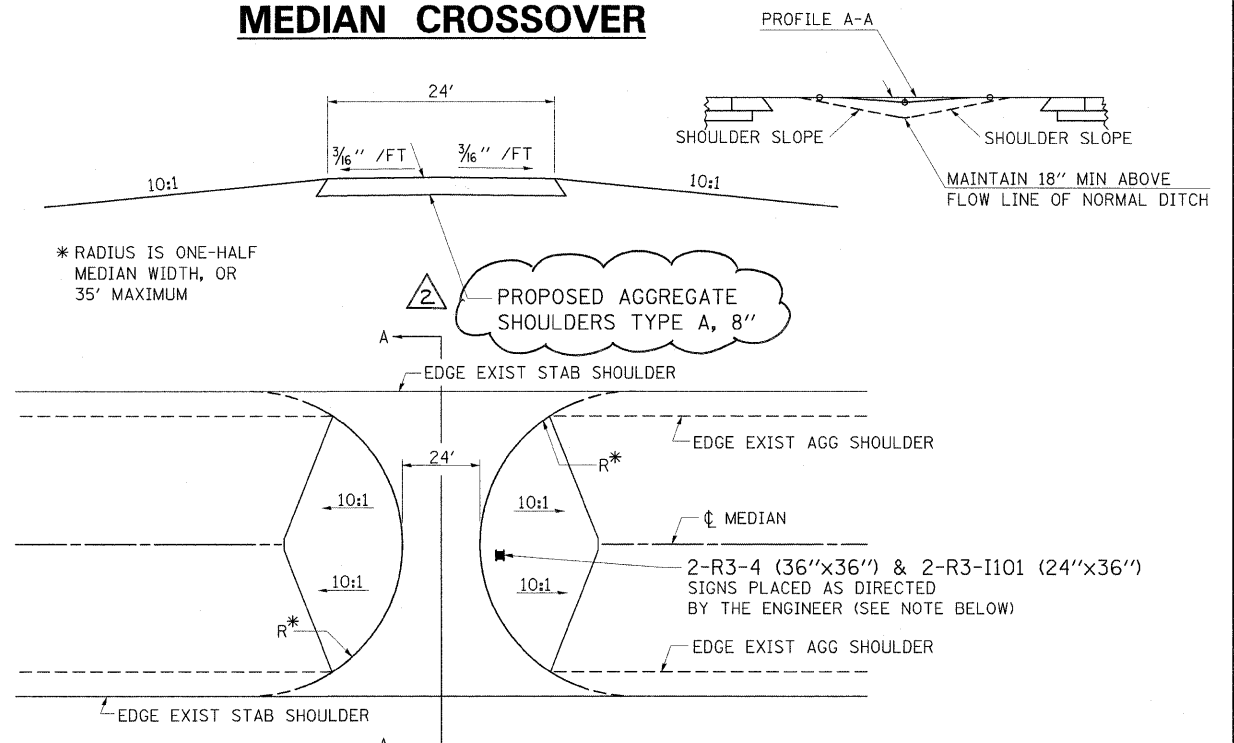
L = THE DISTANCE SUCH THAT POINTS A AND B ARE OF EQUAL ELEVATION

B = THE LOW POINT IN CENTER OF CHECK

REVISIONS	
DRAWN	9-01-99
REVISED	10-3-01
RESIZED	5-8-08
REVISED	05-04-10

STD. 9-108

DETAIL OF PROPOSED EMERGENCY MEDIAN CROSSOVER



TO BE USED:

- 665+50
- 673+00
- 683+50
- 691+80
- 704+00
- 721+50
- 737+50
- 749+30
- 761+45
- 776+40
- 785+75
- 801+00

NOTE:

THE PROPOSED CROSSOVER SURFACE SHALL BE BUTTED TO THE EDGE OF THE EXISTING STABILIZED SHOULDER.

NOTE:

THE SIGN ASSEMBLY FOR EACH LOCATION SHALL BE INCLUDED IN THE COST OF AGGREGATE SHOULDERS, TYPE A 8"

REVISIONED 4/15/11

FILE NAME =	USER NAME = Gary Davis	DESIGNED =	REVISED =	CONCRETE COLLAR PIPE TO PIPE, CONCRETE COLLAR FOR PRECAST BOX CULVERT, TEMP DITCH CHECKS, AND PROPOSED EMERGENCY MEDIAN CROSSOVER DETAILS		F.A.I. RTE. = 57	SECTION =	COUNTY = Jefferson	TOTAL SHEETS = 422	SHEET NO. = 155
C:\Documents and Settings\gdavis\Local Settings\Temporary Internet Files\Content.Outline\65E8B76E\plan-revisions.dgn		DRAWN =	REVISED =	STATE OF ILLINOIS DEPARTMENT OF TRANSPORTATION		CONTRACT NO. 78172		ILLINOIS FED. AID PROJECT		
PLOT SCALE = 50.0000" / IN.		CHECKED =	REVISED =	SCALE: SHEET NO. OF SHEETS STA. TO STA.						
PLOT DATE = 4/14/2011		DATE =	REVISED =			(41-2-1,41-3,41-3-1)R-1				