

GENERAL NOTES

1. "REMOVAL AND DISPOSAL OF UNSUITABLE MATERIAL", AND "POROUS GRANULAR EMBANKMENT SUBGRADE" HAVE BEEN ADDED FOR USE IF UNSUITABLE MATERIAL IS ENCOUNTERED IN THE FIELD, AS DETERMINED BY THE ENGINEER. IF UNSUITABLE AND/OR UNSTABLE MATERIALS IS NOT ENCOUNTERED, THEN THE QUANTITY SHALL BE DEDUCTED AND NO COMPENSATION WILL BE DUE THE CONTRACTOR.
2. FORTY EIGHT HOURS BEFORE STARTING EXCAVATION THE CONTRACTOR SHALL CALL J.U.L.I.E. (1-800-892-0123) TO HAVE THE LOCATION OF EXISTING UTILITIES STAKED.
3. THE CONTRACTOR SHALL CONTACT THE CITY OF ROCKFORD AT LEAST 72 HOURS IN ADVANCE OF BEGINNING ANY WORK ON STONERIDGE DRIVE.
4. THE CONTRACTOR WILL NOT BE ALLOWED TO SET UP A YARD OR FIELD OFFICE ON CITY PROPERTY WITHOUT WRITTEN PERMISSION FROM THE CITY OF ROCKFORD.
5. PRIOR TO COMMENCEMENT OF CONSTRUCTION, THE CONTRACTOR SHALL VERIFY ALL DIMENSIONS AND CONDITIONS AFFECTING THEIR WORK WITH THE ACTUAL CONDITIONS AT THE JOB SITE. IN ADDITION, THE CONTRACTOR MUST VERIFY THE ENGINEER'S LINE AND GRADE STAKES. IF THERE ARE ANY DISCREPANCIES FROM WHAT IS SHOWN ON THE CONSTRUCTION PLANS, HE MUST IMMEDIATELY REPORT SAME TO THE ENGINEER BEFORE DOING ANY WORK, OTHERWISE THE CONTRACTOR ASSUMES FULL RESPONSIBILITY. IN THE EVENT OF DISAGREEMENT BETWEEN THE CONSTRUCTION PLANS, STANDARD SPECIFICATIONS AND/OR SPECIAL DETAILS, THE CONTRACTOR SHALL SECURE WRITTEN INSTRUCTIONS FROM THE ENGINEER PRIOR TO PROCEEDING WITH ANY PART OF THE WORK AFFECTED BY OMISSIONS OR DISCREPANCIES. FAILING TO SECURE SUCH INSTRUCTIONS, THE CONTRACTOR WILL BE CONSIDERED TO HAVE PROCEEDED AT HIS OWN RISK AND EXPENSE. IN THE EVENT OF ANY DOUBT OR QUESTION ARISING WITH RESPECT TO THE TRUE MEANING OF THE CONSTRUCTION PLANS OR SPECIFICATIONS, THE DECISION OF THE ENGINEER SHALL BE FINAL AND CONCLUSIVE.
6. THE WORK UNDER THIS CONTRACT SHALL CONFORM TO ALL REGULATIONS GIVEN IN THE ARMY CORPS OF ENGINEERS PERMIT ISSUED FOR THE PROJECT.
7. REMOVAL AND RELOCATION OF EXISTING SIGNS AND EXISTING TRAFFIC CONTROL SIGNS WILL NOT BE PAID SEPARATELY BUT WILL BE INCLUDED IN THE UNIT COST OF THE PAY ITEMS PERSUANT TO ARTICLE 107 OF THE "STANDARD SPECIFICATIONS"
8. THE CONTRACTOR SHALL PROVIDE ACCESS TO ALL ABUTTING PROPERTY AT ALL TIMES DURING THE CONSTRUCTION OF THIS PROJECT, EXCEPT FOR PERIODS OF SHORT DURATION AS DETERMINED BY THE ENGINEER. THIS WORK SHALL NOT BE PAID FOR SEPARATELY BUT SHALL BE INCLUDED IN "TRAFFIC CONTROL AND PROTECTION, SPECIAL."
9. THE ENGINEER WILL BE THE SOLE JUDGE CONCERNING CURING TIME FOR THE VARIOUS HMA LIFTS.
10. EXCEPT AS NOTED ON THE PLANS, PAVEMENT GRADES SHOWN ARE AT THE TOP OF PAVEMENT SURFACES.
11. OFFSET LOCATIONS GIVEN IN THE PLANS FOR STRUCTURES, EDGE OF PAVEMENT, ETC. ARE FROM THE ROADWAY CENTERLINE UNLESS NOTED OTHERWISE.
12. ALL ELEVATIONS REFERRING TO U.S.G.S. MEAN SEA LEVEL DATUM.
13. THE LOCATION OF EXISTING DRAINAGE STRUCTURES, STORM SEWERS, WATER MAINS, SANITARY SEWERS, AND ANY OTHER PUBLIC OR PRIVATE UTILITIES AS SHOWN ON THE PLANS IS APPROXIMATE AND THEIR EXACT LOCATION IS TO BE DETERMINED IN THE FIELD BY THE CONTRACTOR. THIS WORK SHALL BE CONSIDERED AS INCLUDED IN THE UNIT BID PRICES OF THE CONTRACT, AND NO ADDITIONAL COMPENSATION WILL BE ALLOWED.
14. THE CONTRACTOR SHALL BE RESPONSIBLE FOR THE PROTECTION OF ALL UNDERGROUND AND SURFACE UTILITIES EVEN THOUGH THEY MIGHT NOT BE SHOWN ON THE PLANS. ANY UTILITY PROPERTY DAMAGED DURING CONSTRUCTION SHALL BE REPAIRED OR REPLACED TO THE SATISFACTION OF THE OWNER AT THE CONTRACTOR'S EXPENSE.

15. ANY LOOSE MATERIAL DEPOSITED IN THE FLOWLINES OF DRAINAGE STRUCTURES WHICH OBSTRUCT THE NATURAL FLOW OF WATER SHALL BE REMOVED AT THE CLOSE OF EACH WORKING DAY. PRIOR TO ACCEPTANCE OF THE IMPROVEMENT, ALL DRAINAGE STRUCTURES SHALL BE FREE OF DIRT AND DEBRIS. THIS WORK SHALL NOT BE PAID FOR SEPARATELY BUT SHALL BE CONSIDERED AS INCLUDED IN THE UNIT BID PRICES OF THE CONTRACT.
16. WHERE NEW WORK MEETS EXISTING FEATURES TO REMAIN, THE CONTRACTOR SHALL FIELD CHECK ALL DIMENSIONS AND ELEVATIONS PRIOR TO PROCEEDING WITH CONSTRUCTION AND NOTIFY THE ENGINEER IMMEDIATELY OF ANY DISCREPANCIES.
17. SEEDING WILL NOT BE PERMITTED AT ANY TIME WHEN THE GROUND IS FROZEN, WET, OR IN AN UNTILLABLE CONDITION. LOCATIONS TO BE SEEDED WILL BE DETERMINED BY THE ENGINEER.
18. SAW CUTTING WILL BE REQUIRED FOR ALL REMOVAL ITEMS LISTED IN SECTION 440 OF THE STANDARD SPECIFICATIONS, SHOWN IN THE PLANS, AND AS DIRECTED BY THE ENGINEER. THE COST OF SAW CUTTING WILL BE INCLUDED IN CONTRACT UNIT BID PRICES FOR THE ITEMS BEING REMOVED.
19. NOTICE TO POTENTIAL BIDDERS
STONERIDGE DRIVE AND WILLOW LANE ARE BOTH DEAD END STREETS. THERE IS A LIMITED AMOUNT OF ROOM WITHIN THE EXISTING STONERIDGE RIGHT OF WAY FOR THE CONTRACTOR'S EQUIPMENT AND OPERATIONS. WILLOW LANE IS A PRIVATE ROAD AND INCLUDES A BRIDGE OVER SPRING CREEK WITH LIMITED LIVE LOAD CAPACITY. THE ANTICIPATED DETOUR ROUTE USING WILLOW LANE WILL NOT BE AVAILABLE TO THE CONTRACTOR FOR THE MOVEMENT OF HEAVY EQUIPMENT OR MATERIAL. THE CONTRACTOR WILL NOT, AT ANY TIME, BE PERMITTED TO TRAVERSE ANY PART OF WILLOW LANE WITH EQUIPMENT WEIGHING MORE THAN 15 TONS. THIS WILL EFFECTIVELY FORCE THE CONTRACTOR TO STAGE MANY CONSTRUCTION TASKS FROM THE SOUTH SIDE OF THE BRIDGE. TO ASSEMBLE A BID, PROSPECTIVE BIDDERS ARE ASKED TO ASSUME A SCHEDULE AND EQUIPMENT NEEDS TO ALLOW FOR A SUGGESTED CONSTRUCTION SEQUENCE SIMILAR TO THE FOLLOWING:
 1. CLOSE STONERIDGE AFTER THE DETOUR FOR RESIDENTS IS IN PLACE.
 2. DRIVE THE PILES FOR THE PROPOSED NORTH ABUTMENT. IF HEAVY EQUIPMENT OR MATERIALS WILL BE NEEDED LATER ON THE NORTH SIDE, PARK THE EQUIPMENT (OR STOCKPILE THE MATERIALS) BETWEEN THE NORTH ABUTMENT AND THE ANDERSON GARDENS REAR PARKING LOT ENTRANCE.
 3. EXCAVATE FOR THE PROPOSED NORTH ABUTMENT. CONSTRUCT THE NORTH ABUTMENT.
 4. EXCAVATE BETWEEN THE PROPOSED NORTH ABUTMENT AND THE EXISTING NORTH ABUTMENT. PLACE THE SLOPE PROTECTION/ RIP RAP.
 5. DEMOLISH THE EXISTING BRIDGE AND REMOVE DEBRIS FROM THE SITE WITH EQUIPMENT ON THE SOUTH SIDE.
 6. DRIVE PILES FOR THE PROPOSED SOUTH ABUTMENT AND CONSTRUCT THE PROPOSED SOUTH ABUTMENT.
 7. EXCAVATE BETWEEN THE PROPOSED SOUTH ABUTMENT AND THE LOCATION OF NOW REMOVED SOUTH ABUTMENT. PLACE THE SLOPE PROTECTION/ RIP RAP.
 8. SET THE DECK BEAMS. CONSTRUCT THE WEARING SURFACE. INSTALL THE RAILS, GUARDRAILS, ETC.
 9. CONSTRUCT THE BITUMINOUS PAVEMENT BETWEEN THE BRIDGE AND THE MATCH LINES TO EXISTING PAVEMENT AT EACH END OF THE PROJECT. REOPEN THE BRIDGE TO TRAFFIC.
20. ANY DIRT OR DEBRIS ON THE WILLOW LANE PAVEMENT ATTRIBUTABLE TO THE CONTRACTOR'S OPERATIONS MUST BE REMOVED AT THE END OF EACH WORKING DAY. ANY DAMAGED PORTIONS OF THE WILLOW LANE PAVEMENT OR BRIDGE ATTRIBUTABLE TO THE CONTRACTOR'S OPERATIONS WILL BE PROMPTLY REMOVED AND RECONSTRUCTED TO SATISFACTION OF CITY AT NO ADDITIONAL COST TO THE CITY.

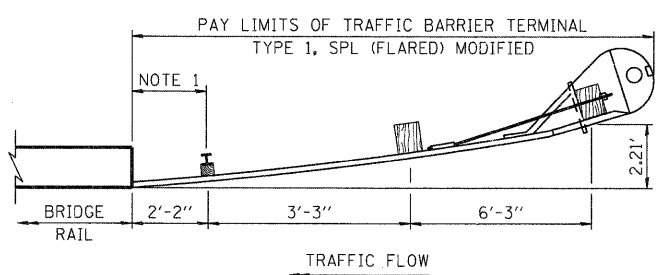
21. THE RIM ELEVATIONS AND OFFSETS FOR DRAINAGE STRUCTURES IN THE PAVEMENT ARE PROVIDED AT THE EDGE OF PAVEMENT UNLESS NOTED OTHERWISE.

SYMBOL LEGEND

	EXISTING	PROPOSED
SANITARY MANHOLE	⊙	⊙
STORM MANHOLE	⊙	⊙
STORM CATCH BASIN	⊙	⊙
INLET	□	■
FLARED END SECTION	▽	▽
VALVE VAULT	⊙	⊙
FIRE HYDRANT	⊙	⊙
LIGHT POLE	✱	✱
STREET SIGN	+	+
REGULATORY SIGN	+	+
UTILITY POLE	⊙	⊙
UTILITY BOX	⊙	⊙
MAILBOX	⊙	⊙
WELL	⊙	⊙
SANITARY SEWER	—	—
STORM SEWER	—	—
CULVERT	—	—
WATER MAIN	—	—
WATER MAIN ENCASEMENT	—	—
STORM UNDERDRAIN	—	—
ELECTRIC LINE	—	—
TELEPHONE LINE	—	—
GAS LINE	—	—
CABLE TV LINE	—	—
TREELINE	⊙	⊙
TREE	⊙	⊙
FENCE	—	—
EROSION CONTROL FENCE	—	—
DITCH CHECK	—	—
DRAINAGE ARROW	→	→
100 YEAR OVERFLOW	→	→

UTILITY CONTACTS

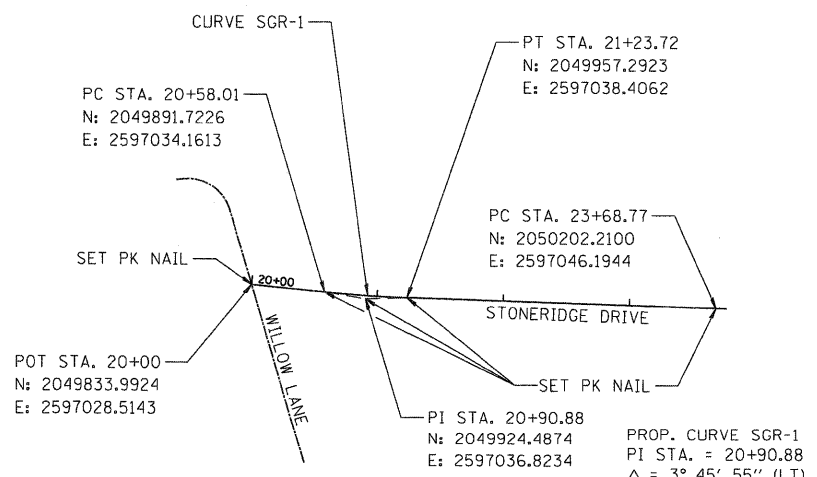
CITY OF ROCKFORD WATER DIVISION	GREG CASSARO	(815) 987-3084
ROCK RIVER WATER RECLAMATION DISTRICT	MIKE OLSON	(815) 387-7663
COMCAST	MICHAEL OWENS	(815) 509-7876
COMED	MIKE LENOX	(815) 490-2869
AT&T	STEVEN JONES	(815) 394-7270
NICOR	CHRIS WINTERS	(815) 455-0271



TRAFFIC BARRIER TERMINAL TYPE 1, SPECIAL (FLARED), MODIFIED DETAIL

REFERENCE HIGHWAY STANDARDS
B.L.R. 23-3 AND B.L.R. 27-1
FOR ADDITIONAL DETAILS.

NOTE 1: UTILIZE CONNECTION PLATES E & G AND NECESSARY HARDWARE FROM HIGHWAY STD. B.L.R. 27-1 TO CONNECT TO BRIDGE RAIL. COORDINATE WITH BRIDGE RAIL DETAILS. COST INCLUDED WITH "TRAFFIC BARRIER TERMINAL TYPE 1, SPECIAL (FLARED) MODIFIED."



ALIGNMENT DETAIL
SEE PLAN AND PROFILE FOR ADDITIONAL CURVE INFORMATION

STANDARD ABBREVIATIONS

- B-B - BACK TO BACK OF CURB
- B.C. - BACK OF CURB
- B.O.C. - BACK OF CURB
- B.S.L. - BUILDING SETBACK LINE
- C.B. - STORM CATCH BASIN
- C.E. - COMMONWEALTH EDISON CO.
- D.E. - DRAINAGE EASEMENT
- E-E - EDGE TO EDGE OF PAVEMENT
- E.O.P. - EDGE OF PAVEMENT
- E.O.S. - EDGE OF SHOULDER
- E.P. - EDGE OF PAVEMENT
- E.S. - EDGE OF SHOULDER
- F.E.S. - FLARED END SECTION
- I.B.T. - ILLINOIS BELL TELEPHONE CO.
- L.E. - LANDSCAPE EASEMENT
- M.H. - MANHOLE (TYPE SPECIFIED ON PLANS)
- R.O.W. - RIGHT OF WAY
- T.B.F. - TRENCH BACKFILL
- T.C. - TOP OF CURB
- T.C.E. - TEMPORARY CONSTRUCTION EASEMENT
- T.O.B. - TOP OF BERM
- T.O.C. - TOP OF CURB
- U.E. - UTILITY EASEMENT

COMPANY NAME: SEC GROUP, INC.
PROJECT CONTACT: Kevin Pratt
CLIENT: City of Rockford
DATE PLOTTED: 12/16/2010 11:16:20 AM
FILE NAME: 86100020-Nim01.dgn
PLOT DRIVER: PDF.plt
PEN TABLE: standard-trans.tbl

SEC Group, Inc.
425 N. First Street
Moline, IL 61201-3130
www.secgroupinc.com

USER NAME = whood	DESIGNED - JMW	REVISED -
FILE NAME = 86100020-Nim01.dgn	DRAWN - RCB	REVISED -
PLOT SCALE = N.T.S.	CHECKED - RGD	REVISED -
PLOT DATE = 12/16/2010	DATE - 12/16/10	REVISED -

CITY OF ROCKFORD

**GENERAL NOTES AND LIST OF STANDARD ABBREVIATIONS
STONERIDGE DRIVE**

SCALE: N.T.S.	SHEET NO. OF SHEETS	STA. TO STA.
---------------	---------------------	--------------

F.A.U. RTE.	SECTION	COUNTY	TOTAL SHEETS	SHEET NO.
	09-00559-00-BR	WINNEBAGO	21	2
CONTRACT NO. 85528				
FED. ROAD DIST. NO. 2 ILLINOIS FED. AID PROJECT				