

F.A.U. RTE.	SECTION	COUNTY	TOTAL SHEETS	SHEET NO.
	09-00559-00-BR	Winnebago	21	1
FED. ROAD DIST. NO. 2	ILLINOIS	CONTRACT NO. 85528		

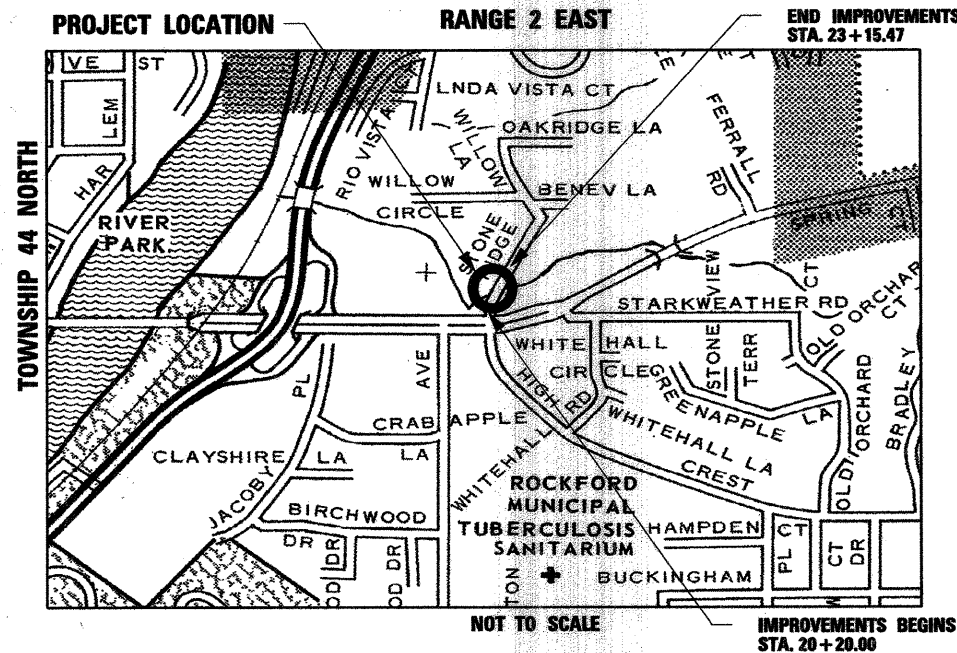
SHEET NO.	DESCRIPTION
1	COVER SHEET
2	GENERAL NOTES & LIST OF STANDARD ABBREVIATIONS
3	SUMMARY OF QUANTITIES
4	TYPICAL SECTIONS
5	TEMPORARY DETOUR PLAN
6	PLAN AND PROFILE
7	STRIPING, EROSION CONTROL & RESTORATION PLAN
8-19	BRIDGE PLANS
20-21	CROSS SECTIONS

STATE STANDARDS

000001-06	STANDARD SYMBOLS, ABBREVIATIONS AND PATTERNS
280001-05	TEMPORARY EROSION CONTROL SYSTEM
515001-03	NAME PLATE FOR BRIDGES
542301-03	PRECAST REINFORCED CONCRETE FLARED, END SECTION
601101-01	CONCRETE HEADWALL FOR PIPE DRAIN
602001-02	CATCH BASIN TYPE A
602301-03	INLET - TYPE A
602401-03	MANHOLE TYPE A
604001-03	FRAME AND LIDS TYPE 1
604006-04	FRAME AND GRATE TYPE 3
606001-04	CONCRETE CURB TYPE B AND COMBINATION CONCRETE CURB AND GUTTER
630001-09	STEEL PLATE BEAM GUARDRAIL
635006-03	REFLECTOR AND TERMINAL MARKER PLACEMENT
635011-02	REFLECTOR MARKER AND MOUNTING DETAILS
701006-03	OFF-RD OPERATIONS, 2L, 2W, 15' (4.5M) TO 24" (600mm) FROM PAVEMENT EDGE
701301-04	LANE CLOSURE, 2L, 2W, SHORT TIME OPERATIONS
701901-01	TRAFFIC CONTROL DEVICES
720011-01	METAL POST FOR SIGNS, MARKERS & DELINEATORS
728001-01	TELESCOPING STEEL SIGN SUPPORT
729001-01	APPLICATIONS OF TYPES A & B METAL POSTS
BLR 21-8	TYPICAL APPLICATION OF TRAFFIC CONTROL DEVICES FOR CONSTRUCTION ON RURAL LOCAL HIGHWAYS
BLR 22-6	TYPICAL APPLICATION OF TRAFFIC CONTROL DEVICES FOR CONSTRUCTION ON RURAL LOCAL HIGHWAYS
BLR 23-3	TRAFFIC BARRIER TERMINAL TYPE 1
BLR 27-1	TRAFFIC BARRIER TERMINAL TYPE 5A

CITY OF ROCKFORD PLANS FOR PROPOSED FEDERAL AID HIGHWAY

**MUNICIPAL STREET 7674
STONERIDGE DRIVE
OVER SPRING CREEK
SECTION 09-00559-00-BR
BRIDGE REPLACEMENT
PROJECT NO. BHM-5099 (083)
EXIST. S.N. 101-6021
PROP. S.N. 101-6011
WINNEBAGO COUNTY
C-92-099-09**



FUNCTIONAL CLASSIFICATION
LOCAL STREET (URBAN)

DESIGN SPEED
STONERIDGE DRIVE: 25 MPH

TRAFFIC DATA:
STONERIDGE DRIVE: ADT=173 (2010)
ADT=200 (2030)
1% TRUCKS

ROCKFORD TOWNSHIP
GROSS LENGTH OF IMPROVEMENT = 295 FT. = 0.06 MILES
NET LENGTH OF IMPROVEMENT = 295 FT. = 0.06 MILES

**PRINTED BY THE AUTHORITY
OF THE STATE OF ILLINOIS**

CITY OF ROCKFORD

APPROVED 12-17-10 (DATE)
CITY OF ROCKFORD, CITY ENGINEER

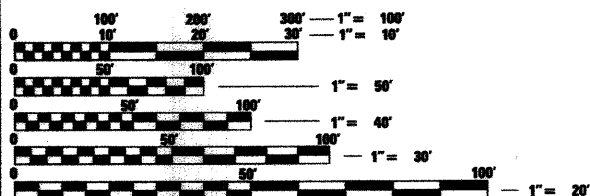
PASSED January 7, 2011 (DATE)
DISTRICT 2 ENGINEER OF LOCAL ROADS & STREETS

RELEASING FOR BID
BASED ON LIMITED
REVIEW JAN 7, 2011 (DATE)
DEPUTY DIRECTOR OF HIGHWAYS, REGION 2 ENGINEER

STRUCTURE INFORMATION:

EXISTING SN: 101-6021:
EXISTING SINGLE SPAN STRUCTURE CONSISTS OF AN ARCHED REINFORCED CONCRETE SLAB WITH AN OUT-TO-OUT WIDTH OF 21'-0" AND A TOTAL LENGTH OF 34'-0" BK. TO BK. ABUTMENTS WITH A 0 DEGREE SKEW. THE SUBSTRUCTURE CONSISTS OF CLOSED CONCRETE ABUTMENTS. STRUCTURE TO BE REMOVED AS SHOWN.

PROPOSED SN: 101-6011:
SINGLE SPAN STRUCTURE CONSISTS OF 27" DEEP PRECAST, PRESTRESSED CONCRETE DECK BEAMS AND A 5" THICK REINFORCED CONCRETE WEARING SURFACE WITH AN OUT-TO-OUT WIDTH OF 24'-0" AND A TOTAL LENGTH OF 57'-9" BK. TO BK. ABUTMENTS. THE PROPOSED STRUCTURE HAS A 20 DEGREE AHEAD RIGHT SKEW. THE SUBSTRUCTURE CONSISTS OF OPEN PILE BENT ABUTMENTS.



FULL SIZE PLANS HAVE BEEN PREPARED USING STANDARD ENGINEERING SCALES. REDUCED SIZED PLANS WILL NOT CONFORM TO STANDARD SCALES. IN MAKING MEASUREMENTS ON REDUCED PLANS, THE ABOVE SCALES MAY BE USED.

J.U.L.I.E.
JOINT UTILITY LOCATION INFORMATION FOR EXCAVATION
1-800-892-0123

CONTRACT NO. 85528

ENGINEER AND SURVEYOR:
SEC GROUP INC.
AN HR GREEN COMPANY
420 NORTH FRONT STREET
MCHENRY, ILLINOIS 60050-2136
(815) 385-1778
CONTACT:
BOB DAVIES, S.E., P.E. - STRUCTURAL ENGINEER
KEVIN M. ARFT, P.E. - PROJECT ENGINEER

STRUCTURAL ENGINEER'S SIGN & SEAL

ROBERT G. DAVIES, S.E., P.E.
DATE: DEC. 16, 2010
DATE: Nov. 30, 2012
EXPIRES



PROFESSIONAL ENGINEER'S SIGN & SEAL

KEVIN M. ARFT, P.E.
DATE: 12/16/10
DATE: 11/30/11
EXPIRES



FEDERAL AID DESIGN ENGINEER: LAURA CONNOLLY (615) 284-2271

GENERAL NOTES

1. "REMOVAL AND DISPOSAL OF UNSUITABLE MATERIAL", AND "POROUS GRANULAR EMBANKMENT SUBGRADE" HAVE BEEN ADDED FOR USE IF UNSUITABLE MATERIAL IS ENCOUNTERED IN THE FIELD, AS DETERMINED BY THE ENGINEER. IF UNSUITABLE AND/OR UNSTABLE MATERIALS IS NOT ENCOUNTERED, THEN THE QUANTITY SHALL BE DEDUCTED AND NO COMPENSATION WILL BE DUE THE CONTRACTOR.
2. FORTY EIGHT HOURS BEFORE STARTING EXCAVATION THE CONTRACTOR SHALL CALL J.U.L.I.E. (1-800-892-0123) TO HAVE THE LOCATION OF EXISTING UTILITIES STAKED.
3. THE CONTRACTOR SHALL CONTACT THE CITY OF ROCKFORD AT LEAST 72 HOURS IN ADVANCE OF BEGINNING ANY WORK ON STONERIDGE DRIVE.
4. THE CONTRACTOR WILL NOT BE ALLOWED TO SET UP A YARD OR FIELD OFFICE ON CITY PROPERTY WITHOUT WRITTEN PERMISSION FROM THE CITY OF ROCKFORD.
5. PRIOR TO COMMENCEMENT OF CONSTRUCTION, THE CONTRACTOR SHALL VERIFY ALL DIMENSIONS AND CONDITIONS AFFECTING THEIR WORK WITH THE ACTUAL CONDITIONS AT THE JOB SITE. IN ADDITION, THE CONTRACTOR MUST VERIFY THE ENGINEER'S LINE AND GRADE STAKES. IF THERE ARE ANY DISCREPANCIES FROM WHAT IS SHOWN ON THE CONSTRUCTION PLANS, HE MUST IMMEDIATELY REPORT SAME TO THE ENGINEER BEFORE DOING ANY WORK, OTHERWISE THE CONTRACTOR ASSUMES FULL RESPONSIBILITY. IN THE EVENT OF DISAGREEMENT BETWEEN THE CONSTRUCTION PLANS, STANDARD SPECIFICATIONS AND/OR SPECIAL DETAILS, THE CONTRACTOR SHALL SECURE WRITTEN INSTRUCTIONS FROM THE ENGINEER PRIOR TO PROCEEDING WITH ANY PART OF THE WORK AFFECTED BY OMISSIONS OR DISCREPANCIES. FAILING TO SECURE SUCH INSTRUCTIONS, THE CONTRACTOR WILL BE CONSIDERED TO HAVE PROCEEDED AT HIS OWN RISK AND EXPENSE. IN THE EVENT OF ANY DOUBT OR QUESTION ARISING WITH RESPECT TO THE TRUE MEANING OF THE CONSTRUCTION PLANS OR SPECIFICATIONS, THE DECISION OF THE ENGINEER SHALL BE FINAL AND CONCLUSIVE.
6. THE WORK UNDER THIS CONTRACT SHALL CONFORM TO ALL REGULATIONS GIVEN IN THE ARMY CORPS OF ENGINEERS PERMIT ISSUED FOR THE PROJECT.
7. REMOVAL AND RELOCATION OF EXISTING SIGNS AND EXISTING TRAFFIC CONTROL SIGNS WILL NOT BE PAID SEPARATELY BUT WILL BE INCLUDED IN THE UNIT COST OF THE PAY ITEMS PERSUANT TO ARTICLE 107 OF THE "STANDARD SPECIFICATIONS"
8. THE CONTRACTOR SHALL PROVIDE ACCESS TO ALL ABUTTING PROPERTY AT ALL TIMES DURING THE CONSTRUCTION OF THIS PROJECT, EXCEPT FOR PERIODS OF SHORT DURATION AS DETERMINED BY THE ENGINEER. THIS WORK SHALL NOT BE PAID FOR SEPARATELY BUT SHALL BE INCLUDED IN "TRAFFIC CONTROL AND PROTECTION, SPECIAL."
9. THE ENGINEER WILL BE THE SOLE JUDGE CONCERNING CURING TIME FOR THE VARIOUS HMA LIFTS.
10. EXCEPT AS NOTED ON THE PLANS, PAVEMENT GRADES SHOWN ARE AT THE TOP OF PAVEMENT SURFACES.
11. OFFSET LOCATIONS GIVEN IN THE PLANS FOR STRUCTURES, EDGE OF PAVEMENT, ETC. ARE FROM THE ROADWAY CENTERLINE UNLESS NOTED OTHERWISE.
12. ALL ELEVATIONS REFERRING TO U.S.G.S. MEAN SEA LEVEL DATUM.
13. THE LOCATION OF EXISTING DRAINAGE STRUCTURES, STORM SEWERS, WATER MAINS, SANITARY SEWERS, AND ANY OTHER PUBLIC OR PRIVATE UTILITIES AS SHOWN ON THE PLANS IS APPROXIMATE AND THEIR EXACT LOCATION IS TO BE DETERMINED IN THE FIELD BY THE CONTRACTOR. THIS WORK SHALL BE CONSIDERED AS INCLUDED IN THE UNIT BID PRICES OF THE CONTRACT, AND NO ADDITIONAL COMPENSATION WILL BE ALLOWED.
14. THE CONTRACTOR SHALL BE RESPONSIBLE FOR THE PROTECTION OF ALL UNDERGROUND AND SURFACE UTILITIES EVEN THOUGH THEY MIGHT NOT BE SHOWN ON THE PLANS. ANY UTILITY PROPERTY DAMAGED DURING CONSTRUCTION SHALL BE REPAIRED OR REPLACED TO THE SATISFACTION OF THE OWNER AT THE CONTRACTOR'S EXPENSE.

15. ANY LOOSE MATERIAL DEPOSITED IN THE FLOWLINES OF DRAINAGE STRUCTURES WHICH OBSTRUCT THE NATURAL FLOW OF WATER SHALL BE REMOVED AT THE CLOSE OF EACH WORKING DAY. PRIOR TO ACCEPTANCE OF THE IMPROVEMENT, ALL DRAINAGE STRUCTURES SHALL BE FREE OF DIRT AND DEBRIS. THIS WORK SHALL NOT BE PAID FOR SEPARATELY BUT SHALL BE CONSIDERED AS INCLUDED IN THE UNIT BID PRICES OF THE CONTRACT.
16. WHERE NEW WORK MEETS EXISTING FEATURES TO REMAIN, THE CONTRACTOR SHALL FIELD CHECK ALL DIMENSIONS AND ELEVATIONS PRIOR TO PROCEEDING WITH CONSTRUCTION AND NOTIFY THE ENGINEER IMMEDIATELY OF ANY DISCREPANCIES.
17. SEEDING WILL NOT BE PERMITTED AT ANY TIME WHEN THE GROUND IS FROZEN, WET, OR IN AN UNTILLABLE CONDITION. LOCATIONS TO BE SEEDED WILL BE DETERMINED BY THE ENGINEER.
18. SAW CUTTING WILL BE REQUIRED FOR ALL REMOVAL ITEMS LISTED IN SECTION 440 OF THE STANDARD SPECIFICATIONS, SHOWN IN THE PLANS, AND AS DIRECTED BY THE ENGINEER. THE COST OF SAW CUTTING WILL BE INCLUDED IN CONTRACT UNIT BID PRICES FOR THE ITEMS BEING REMOVED.
19. NOTICE TO POTENTIAL BIDDERS
STONERIDGE DRIVE AND WILLOW LANE ARE BOTH DEAD END STREETS. THERE IS A LIMITED AMOUNT OF ROOM WITHIN THE EXISTING STONERIDGE RIGHT OF WAY FOR THE CONTRACTOR'S EQUIPMENT AND OPERATIONS. WILLOW LANE IS A PRIVATE ROAD AND INCLUDES A BRIDGE OVER SPRING CREEK WITH LIMITED LIVE LOAD CAPACITY. THE ANTICIPATED DETOUR ROUTE USING WILLOW LANE WILL NOT BE AVAILABLE TO THE CONTRACTOR FOR THE MOVEMENT OF HEAVY EQUIPMENT OR MATERIAL. THE CONTRACTOR WILL NOT, AT ANY TIME, BE PERMITTED TO TRAVERSE ANY PART OF WILLOW LANE WITH EQUIPMENT WEIGHING MORE THAN 15 TONS. THIS WILL EFFECTIVELY FORCE THE CONTRACTOR TO STAGE MANY CONSTRUCTION TASKS FROM THE SOUTH SIDE OF THE BRIDGE. TO ASSEMBLE A BID, PROSPECTIVE BIDDERS ARE ASKED TO ASSUME A SCHEDULE AND EQUIPMENT NEEDS TO ALLOW FOR A SUGGESTED CONSTRUCTION SEQUENCE SIMILAR TO THE FOLLOWING:
 1. CLOSE STONERIDGE AFTER THE DETOUR FOR RESIDENTS IS IN PLACE.
 2. DRIVE THE PILES FOR THE PROPOSED NORTH ABUTMENT. IF HEAVY EQUIPMENT OR MATERIALS WILL BE NEEDED LATER ON THE NORTH SIDE, PARK THE EQUIPMENT (OR STOCKPILE THE MATERIALS) BETWEEN THE NORTH ABUTMENT AND THE ANDERSON GARDENS REAR PARKING LOT ENTRANCE.
 3. EXCAVATE FOR THE PROPOSED NORTH ABUTMENT. CONSTRUCT THE NORTH ABUTMENT.
 4. EXCAVATE BETWEEN THE PROPOSED NORTH ABUTMENT AND THE EXISTING NORTH ABUTMENT. PLACE THE SLOPE PROTECTION/ RIP RAP.
 5. DEMOLISH THE EXISTING BRIDGE AND REMOVE DEBRIS FROM THE SITE WITH EQUIPMENT ON THE SOUTH SIDE.
 6. DRIVE PILES FOR THE PROPOSED SOUTH ABUTMENT AND CONSTRUCT THE PROPOSED SOUTH ABUTMENT.
 7. EXCAVATE BETWEEN THE PROPOSED SOUTH ABUTMENT AND THE LOCATION OF NOW REMOVED SOUTH ABUTMENT. PLACE THE SLOPE PROTECTION/ RIP RAP.
 8. SET THE DECK BEAMS. CONSTRUCT THE WEARING SURFACE. INSTALL THE RAILS, GUARDRAILS, ETC.
 9. CONSTRUCT THE BITUMINOUS PAVEMENT BETWEEN THE BRIDGE AND THE MATCH LINES TO EXISTING PAVEMENT AT EACH END OF THE PROJECT. REOPEN THE BRIDGE TO TRAFFIC.
20. ANY DIRT OR DEBRIS ON THE WILLOW LANE PAVEMENT ATTRIBUTABLE TO THE CONTRACTOR'S OPERATIONS MUST BE REMOVED AT THE END OF EACH WORKING DAY. ANY DAMAGED PORTIONS OF THE WILLOW LANE PAVEMENT OR BRIDGE ATTRIBUTABLE TO THE CONTRACTOR'S OPERATIONS WILL BE PROMPTLY REMOVED AND RECONSTRUCTED TO SATISFACTION OF CITY AT NO ADDITIONAL COST TO THE CITY.

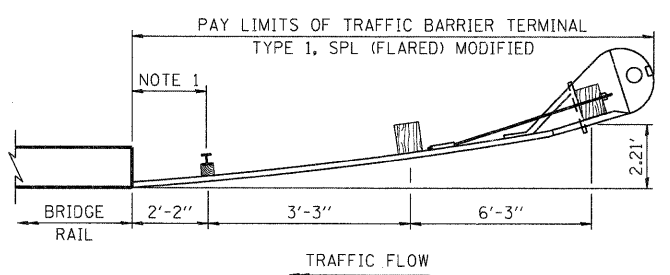
21. THE RIM ELEVATIONS AND OFFSETS FOR DRAINAGE STRUCTURES IN THE PAVEMENT ARE PROVIDED AT THE EDGE OF PAVEMENT UNLESS NOTED OTHERWISE.

SYMBOL LEGEND

	EXISTING	PROPOSED
SANITARY MANHOLE	⊙	⊙
STORM MANHOLE	⊙	⊙
STORM CATCH BASIN	⊙	⊙
INLET	□	■
FLARED END SECTION	▽	▽
VALVE VAULT	⊙	⊙
FIRE HYDRANT	⊙	⊙
LIGHT POLE	⋆	⋆
STREET SIGN	+	+
REGULATORY SIGN	+	+
UTILITY POLE	⊙	⊙
UTILITY BOX	⊙	⊙
MAILBOX	⊙	⊙
WELL	⊙	⊙
SANITARY SEWER	—	—
STORM SEWER	—	—
CULVERT	—	—
WATER MAIN	—	—
WATER MAIN ENCASEMENT	—	—
STORM UNDERDRAIN	—	—
ELECTRIC LINE	—	—
TELEPHONE LINE	—	—
GAS LINE	—	—
CABLE TV LINE	—	—
TREELINE	—	—
TREE	⊙	⊙
FENCE	—	—
EROSION CONTROL FENCE	—	—
DITCH CHECK	—	—
DRAINAGE ARROW	—	—
100 YEAR OVERFLOW	—	—

STANDARD ABBREVIATIONS

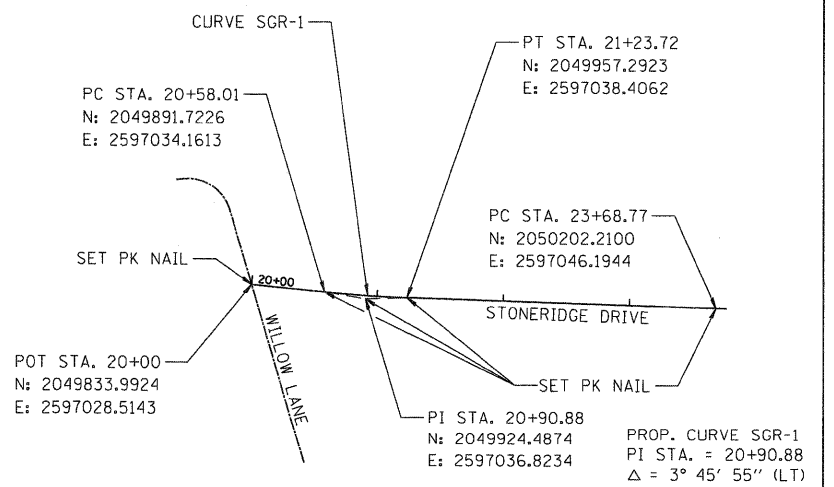
- B-B - BACK TO BACK OF CURB
- B.C. - BACK OF CURB
- B.O.C. - BACK OF CURB
- B.S.L. - BUILDING SETBACK LINE
- C.B. - STORM CATCH BASIN
- C.E. - COMMONWEALTH EDISON CO.
- D.E. - DRAINAGE EASEMENT
- E-E - EDGE TO EDGE OF PAVEMENT
- E.O.P. - EDGE OF PAVEMENT
- E.O.S. - EDGE OF SHOULDER
- E.P. - EDGE OF PAVEMENT
- E.S. - EDGE OF SHOULDER
- F.E.S. - FLARED END SECTION
- I.B.T. - ILLINOIS BELL TELEPHONE CO.
- L.E. - LANDSCAPE EASEMENT
- M.H. - MANHOLE (TYPE SPECIFIED ON PLANS)
- R.O.W. - RIGHT OF WAY
- T.B.F. - TRENCH BACKFILL
- T.C. - TOP OF CURB
- T.C.E. - TEMPORARY CONSTRUCTION EASEMENT
- T.O.B. - TOP OF BERM
- T.O.C. - TOP OF CURB
- U.E. - UTILITY EASEMENT



TRAFFIC BARRIER TERMINAL TYPE 1, SPECIAL (FLARED), MODIFIED DETAIL

REFERENCE HIGHWAY STANDARDS B.L.R. 23-3 AND B.L.R. 27-1 FOR ADDITIONAL DETAILS.

NOTE 1: UTILIZE CONNECTION PLATES E & G AND NECESSARY HARDWARE FROM HIGHWAY STD. B.L.R. 27-1 TO CONNECT TO BRIDGE RAIL. COORDINATE WITH BRIDGE RAIL DETAILS. COST INCLUDED WITH "TRAFFIC BARRIER TERMINAL TYPE 1, SPECIAL (FLARED) MODIFIED."



ALIGNMENT DETAIL
SEE PLAN AND PROFILE FOR ADDITIONAL CURVE INFORMATION

PROP. CURVE SGR-1
PI STA. = 20+90.88
Δ = 3° 45' 55" (LT)
D = 5° 43' 46"
R = 1,000.00'
T = 32.87'
L = 65.72'
E = 0.54'
e = ----
T.R. = ----
S.E. RUN = ----
P.C. STA. = 20+58.01
P.T. STA. = 21+23.72

UTILITY CONTACTS

CITY OF ROCKFORD WATER DIVISION	GREG CASSARO	(815) 987-3084
ROCK RIVER WATER RECLAMATION DISTRICT	MIKE OLSON	(815) 387-7663
COMCAST	MICHAEL OWENS	(815) 509-7876
COMED	MIKE LENOX	(815) 490-2869
AT&T	STEVEN JONES	(815) 394-7270
NICOR	CHRIS WINTERS	(815) 455-0271

COMPANY NAME: SEC GROUP, INC.
PROJECT CONTACT: Kevin Pratt
CLIENT: City of Rockford
DATE PLOTTED: 12/16/2010 11:16:20 AM
FILE NAME: 86100020-Nim01.dgn
PLOT DRIVER: PDF.plt
PEN TABLE: standard-trans.tbl

SEC Group, Inc.
425 N. First Street
Moline, IL 61201-3130
www.secgroupinc.com

USER NAME = whood	DESIGNED - JMW	REVISED -
FILE NAME = 86100020-Nim01.dgn	DRAWN - RCB	REVISED -
PLOT SCALE = N.T.S.	CHECKED - RGD	REVISED -
PLOT DATE = 12/16/2010	DATE - 12/16/10	REVISED -

CITY OF ROCKFORD

GENERAL NOTES AND LIST OF STANDARD ABBREVIATIONS STONERIDGE DRIVE

SCALE: N.T.S.	SHEET NO.	OF	SHEETS	STA.	TO STA.

F.A.U. RTE.	SECTION	COUNTY	TOTAL SHEETS	SHEET NO.
	09-00559-00-BR	WINNEBAGO	21	2
CONTRACT NO. 85528				
FED. ROAD DIST. NO. 2 ILLINOIS FED. AID PROJECT				

SUMMARY OF QUANTITIES			URBAN	CONSTRUCTION TYPE CODE
CODE NUMBER	PAY ITEMS	UNIT	TOTAL QUANTITY	0011
20100110	TREE REMOVAL (6 TO 15 UNITS DIAMETER)	UNIT	78	78
20100210	TREE REMOVAL (OVER 15 UNITS DIAMETER)	UNIT	80	80
20101200	TREE ROOT PRUNING	EACH	5	5
Δ 20201200	REMOVAL AND DISPOSAL OF UNSUITABLE MATERIAL	CU. YD.	366.0	366.0
20400800	FURNISHED EXCAVATION	CU. YD.	20.0	20.0
Δ 20800150	TRENCH BACKFILL	CU. YD.	11.3	11.3
21101615	TOPSOIL FURNISH AND PLACE, 4"	SQ. YD.	901	901
Δ 25000210	SEEDING CLASS 2A	ACRE	0.2	0.2
25000400	NITROGEN FERTILIZER NUTRIENT	POUND	18	18
25000500	PHOSPHOROUS FERTILIZER NUTRIENT	POUND	18	18
25000600	POTASSIUM FERTILIZER NUTRIENT	POUND	18	18
25100630	EROSION CONTROL BLANKET	SQ. YD.	901	901
28000400	PERIMETER EROSION BARRIER	FOOT	660	660
28000500	INLET AND PIPE PROTECTION	EACH	4	4
28100107	STONE RIPRAP CLASS A4	SQ. YD.	390	390
28200200	FILTER FABRIC	SQ. YD.	390	390
31101200	SUB-BASE GRANULAR MATERIAL, TYPE B, 4"	SQ. YD.	641	641
35102000	AGGREGATE BASE COURSE, TYPE B 8"	SQ. YD.	495	495
40600100	BITUMINOUS MATERIALS (PRIME COAT)	GAL.	248	248
Δ 40603080	HOT-MIX ASPHALT BINDER COURSE, IL-19.0, N50	TON	79	79
Δ 40603310	HOT-MIX ASPHALT SURFACE COURSE, MIX "C", N50	TON	42	42
44000100	PAVEMENT REMOVAL	SQ. YD.	499	499
44000500	COMBINATION CURB AND GUTTER REMOVAL	FOOT	448	448
Δ 50100100	REMOVAL OF EXISTING STRUCTURES	EACH	1	1
50200100	STRUCTURE EXCAVATION	CU. YD.	167	167
50300225	CONCRETE STRUCTURES	CU. YD.	21.4	21.4
50300255	CONCRETE SUPERSTRUCTURE	CU. YD.	5.6	5.6
50300260	BRIDGE DECK GROOVING	SQ. YD.	136	136
50300280	CONCRETE ENCASEMENT	CU. YD.	6.6	6.6
50300300	PROTECTIVE COAT	SQ. YD.	154	154
50400505	PRECAST, PRESTRESSED CONCRETE DECK BEAMS, 27 INCH	SQ. FT.	1,335	1,335

SUMMARY OF QUANTITIES			URBAN	CONSTRUCTION TYPE CODE
CODE NUMBER	PAY ITEMS	UNIT	TOTAL QUANTITY	0011
50800205	REINFORCEMENT BARS, EPOXY COATED	POUND	6,010	6,010
* 50901050	STEEL RAILING, TYPE SM	FOOT	114	114
51201600	FURNISHING STEEL PILES, HP12X53	FOOT	600	600
Δ 51202305	DRIVING PILES	FOOT	600	600
51203600	TEST PILE STEEL HP 12 X 53	EACH	2	2
51500100	NAME PLATES	EACH	1	1
54213657	PRECAST REINFORCED CONCRETE FLARED END SECTIONS 12"	EACH	2	2
550A0050	STORM SEWERS, CLASS A, TYPE 1 12"	FOOT	98	98
55100500	STORM SEWER REMOVAL 12"	FOOT	61	61
59100100	GEOCOMPOSITE WALL DRAIN	SQ. YD.	49	49
60100060	CONCRETE HEADWALLS FOR PIPE DRAINS	EACH	4	4
60200305	CATCH BASINS, TYPE A, 4' DIAMETER, TYPE 3 FRAME AND GRATE	EACH	1	1
60218400	MANHOLES, TYPE A, 4' DIAMETER, TYPE 1 FRAME, CLOSED LID	EACH	1	1
60218500	MANHOLES, TYPE A, 4' DIAMETER, TYPE 3 FRAME AND GRATE	EACH	1	1
60235700	INLETS, TYPE A, TYPE 3 FRAME AND GRATE	EACH	2	2
60500060	REMOVING INLETS	EACH	4	4
60604400	COMBINATION CONCRETE CURB AND GUTTER, TYPE B-6.18	FOOT	482	482
* 63000001	STEEL PLATE BEAM GUARDRAIL, TYPE A, 6 FOOT POSTS	FOOT	62.5	62.5
* 63100075	TRAFFIC BARRIER TERMINAL, TYPE 5A	EACH	1	1
Δ 67000400	ENGINEER'S FIELD OFFICE, TYPE A	CAL MO	4	4
67100100	MOBILIZATION	L SUM	1	1
* 78005110	EPOXY PAVEMENT MARKING - LINE 4"	FOOT	591	591
* 78201000	TERMINAL MARKER - DIRECT APPLY	EACH	2	2
* LR631020	TRAFFIC BARRIER TERMINAL, TYPE 1	EACH	1	1
Δ X2070304	POROUS GRANULAR EMBANKMENT, SPECIAL	CU. YD.	84	84
Δ X5030305	CONCRETE WEARING SURFACE, 5"	SQ. YD.	149	149
* Δ X6310190	TRAFFIC BARRIER TERMINAL, TYPE 1, SPECIAL (FLARED), MODIFIED	EACH	1	1
Δ XT010216	TRAFFIC CONTROL & PROTECTION, SPECIAL	L SUM	1	1
Δ Z0004530	HOT MIX ASPHALT DRIVEWAY PAVEMENT, 8"	SQ. YD.	22	22
Δ Z0013798	CONSTRUCTION LAYOUT	L SUM	1	1
Δ Z0042002	POROUS GRANULAR EMBANKMENT, SUBGRADE	CU. YD.	214.0	214.0
Δ Z0046304	PIPE UNDERDRAINS FOR STRUCTURES, 4"	FOOT	110	110

* DENOTES SPECIALTY ITEM
 Δ DENOTES SPECIAL PROVISION

STORM SEWER TAGS

- 1 INLET TA T3 F&G
STA. = 20+90.09, 10' RT
RIM = 722.55
INV. = 718.55 W
- 2 21 LIN FT SS CL A 1 12" @ 1.50%
- 3 MH TA 4' DIA T3 F&G
STA. = 20+90.09, 10' LT
RIM = 722.55
INV. = 718.24 E
INV. = 717.74 N
- 4 38 LIN FT SS CL A 1 12" @ 5.89%
- 5 PRC FLAR END SEC 12"
STA. 21+28.72, 19.93' LT
INV. = 715.60
- 6 INLET TA T3 F&G
STA. = 21+96.86, 9.77' RT
RIM = 723.26
INV. = 719.26
- 7 22 LIN FT SS CL A 1 12" @ 2.50%
- 8 CB TA 4' DIA T3 F&G
STA. = 21+88.62, 9.85' LT
RIM = 723.17
INV. = 718.71 E
INV. = 717.21 W
- 9 6 LIN FT SS CL A 1 12" @ 2.50%
- 10 MH TA 4' DIA CL
STA. = 21+85.32, 20.44' LT
RIM = 721.11
INV. = 717.06 E
INV. = 715.56 N
- 11 11 LIN FT SS CL A 1 12" @ 2.82%
- 12 PRC FLAR END SEC 12"
STA. 21+73.15, 21.25' LT
INV. = 715.25

COMPANY NAME: SEC GROUP, INC.
 PROJECT CONTACT: Kevin Arft
 CLIENT: City of Rockford
 DATE PLOTTED: 12/16/2010 11:16:28 AM
 FILE NAME: 86100020-500.dgn
 PLOT DRIVER: PDF.plt
 PEN TABLE: standard-trans.tbl

SEC Group, Inc.
 An HR Green Company
 420 N. Front Street
 Mchenry, IL 60050-2130
 L. 815.385.1778 F. 815.385.1781
 www.secgroupinc.com
 460 Henry St., Rockford, IL - New Location - Chicago, IL

USER NAME = whood	DESIGNED = JMW	REVISED =
FILE NAME = 86100020-500.dgn	DRAWN = WJH	REVISED =
PLOT SCALE = N.T.S.	CHECKED = RGD	REVISED =
PLOT DATE = 12/16/2010	DATE = 12/16/10	REVISED =

CITY OF ROCKFORD

**SUMMARY OF QUANTITIES
 STONERIDGE DRIVE**

SCALE: N.T.S. SHEET NO. OF SHEETS STA. TO STA.

F.A.U. RTE.	SECTION	COUNTY	TOTAL SHEETS	SHEET NO.
	09-00559-00-BR	WINNEBAGO	21	3
CONTRACT NO. 85528				
FED. ROAD DIST. NO. 2 ILLINOIS FED. AID PROJECT				

NOTES

1. COST FOR REMOVAL INCLUDED IN THE ITEM REMOVAL OF EXISTING SUPERSTRUCTURE
2. SEE PAVEMENT ELEVATION DETAIL ON SHEET 3 AND THE CROSS SECTIONS.
3. SOUTH APPROACH ONLY
4. SEE STRIPING, EROSION CONTROL & RESTORATION PLAN FOR LIMITS
5. SEE CROSS SECTIONS
6. EXISTING SUBBASE TO BE REMOVED AS NECESSARY TO FACILITATE PLACEMENT OF PROPOSED PAVEMENT SECTION. COST INCLUDED IN "PAVEMENT REMOVAL." COORDINATE WITH GENERAL NOTE 1 ON SHEET 2.

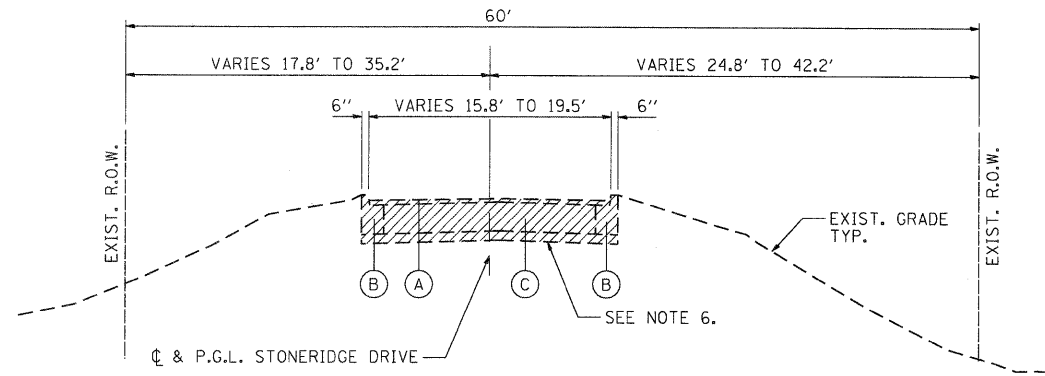
EXISTING LEGEND

- (A) EXISTING HMA SURFACE (THICKNESS VARIES 2" TO 3")
- (B) EXIST. COMB. CC&G TB6.18
- (C) EXIST. CONCRETE BASE (THICKNESS VARIES 6" TO 7")

PROPOSED LEGEND

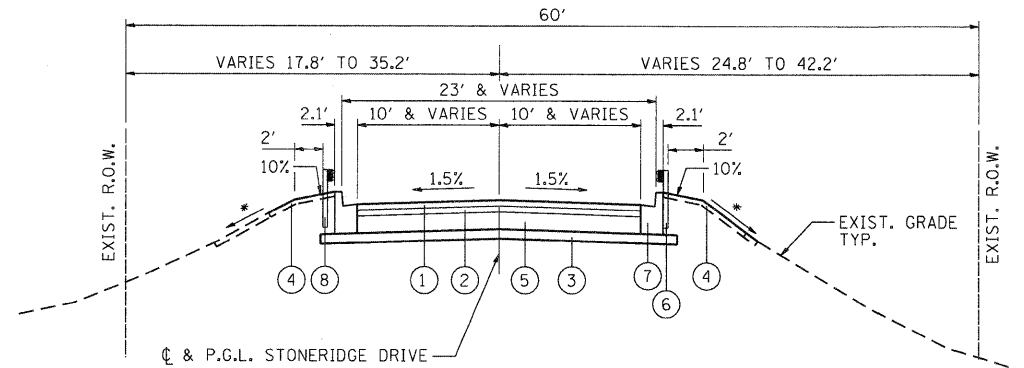
- (1) HOT-MIX ASPHALT SURFACE COURSE MIX "C" N50 @ 1 1/2"
- (2) HOT-MIX ASPHALT BINDER COURSE IL - 19.0, N50 @ 2 1/2" THICKNESS VARIABLE ADJACENT TO BRIDGE. SEE S-2.
- (3) SUBBASE GRANULAR MATERIAL, TYPE B 4"
- (4) TOPSOIL FURNISH & PLACE 4" WITH SEEDING CLASS 2A
- (5) AGGREGATE BASE COURSE, TYPE B, 8"
- (6) STEEL PLATE BEAM GUARDRAIL, TYPE A, 6' POSTS (SOUTHEAST CORNER ONLY)
- (7) COMBINATION CONCRETE CURB AND GUTTER, TYPE B-6.18
- (8) TRAFFIC BARRIER TERMINAL, TYPE 1, SPECIAL (FLARED), MODIFIED (NORTHWEST CORNER ONLY)

INDICATES ITEMS TO BE REMOVED



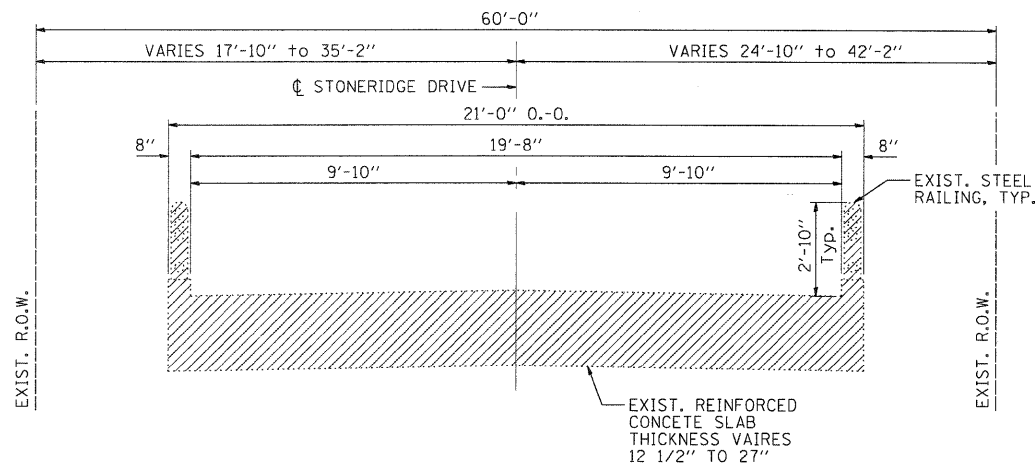
**EXISTING APPROACH ROADWAY
TYPICAL SECTION**

STA. 20+20.00 TO 21+41.73
STA. 21+75.48 TO 22+89.65



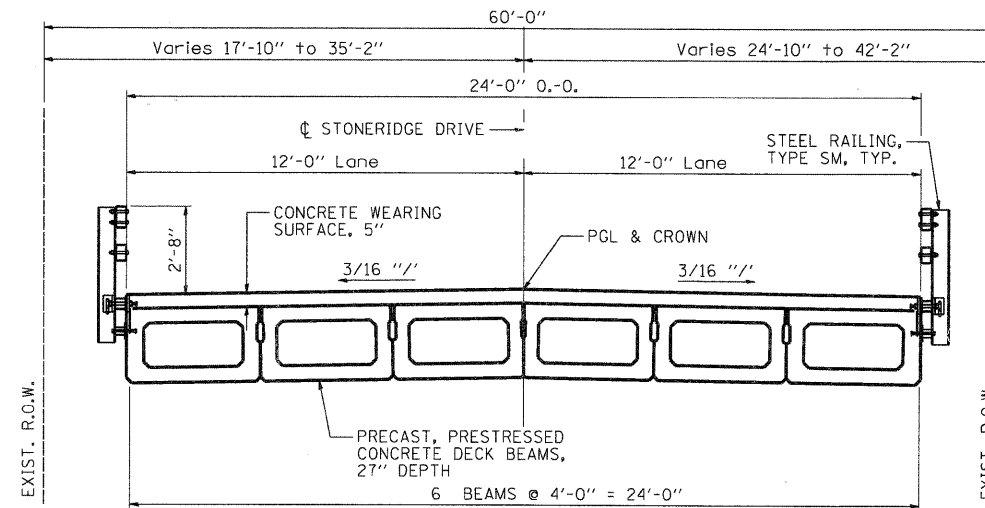
**PROPOSED APPROACH ROADWAY
TYPICAL SECTION**

*2.5:1 & VARIES
STA. 20+20.00 TO 21+29.43
STA. 21+87.18 TO 23+15.47



**EXISTING BRIDGE
TYPICAL SECTION**

STA. 21+41.73 TO STA. 21+75.48



**PROPOSED BRIDGE
TYPICAL SECTION**

STA. 21+29.43 TO STA. 21+87.18

HOT-MIX ASPHALT MIXTURE REQUIREMENTS		
MIXTURE USE	SURFACE	BINDER
PG:	PG 58-22	PG 58-22
DESIGN AIR VOIDS	3.0 @ N50	3.0 @ N50
MIXTURE COMPOSITION (GRADIATION MIXTURE)	IL 9.5 OR 12.5	IL 19.0
FRICITION AGGREGATE	C	N/A
20 YEAR ESAL	0.0	0.0
MIX UNIT WEIGHT	112 LBS/SY/IN	

COMPANY NAME: SEC GROUP, INC.
 PROJECT CONTACT: Kevin Arft
 CLIENT: City of Rockford
 DATE PLOTTED: 12/16/2010 11:46:34 AM
 FILE NAME: 86100020-Typ.dgn
 PLOT DRIVER: PDF.plt
 PEN TABLE: standard-trans.tbl

SEC Group, Inc.
 An HR Green Company
 401 N. Wood Street
 Moline, IL 61755-2138
 T: 309.361.1779 F: 309.365.1191
 www.secgroupinc.com
 *Moline, IL - Rockford, IL - Star Line, IL - Chicago, IL

USER NAME = whood	DESIGNED - JMW	REVISED -
FILE NAME = 86100020-Typ.dgn	DRAWN - RCB	REVISED -
PLOT SCALE = N.T.S.	CHECKED - RGD	REVISED -
PLOT DATE = 12/16/2010	DATE - 12/16/2010	REVISED -

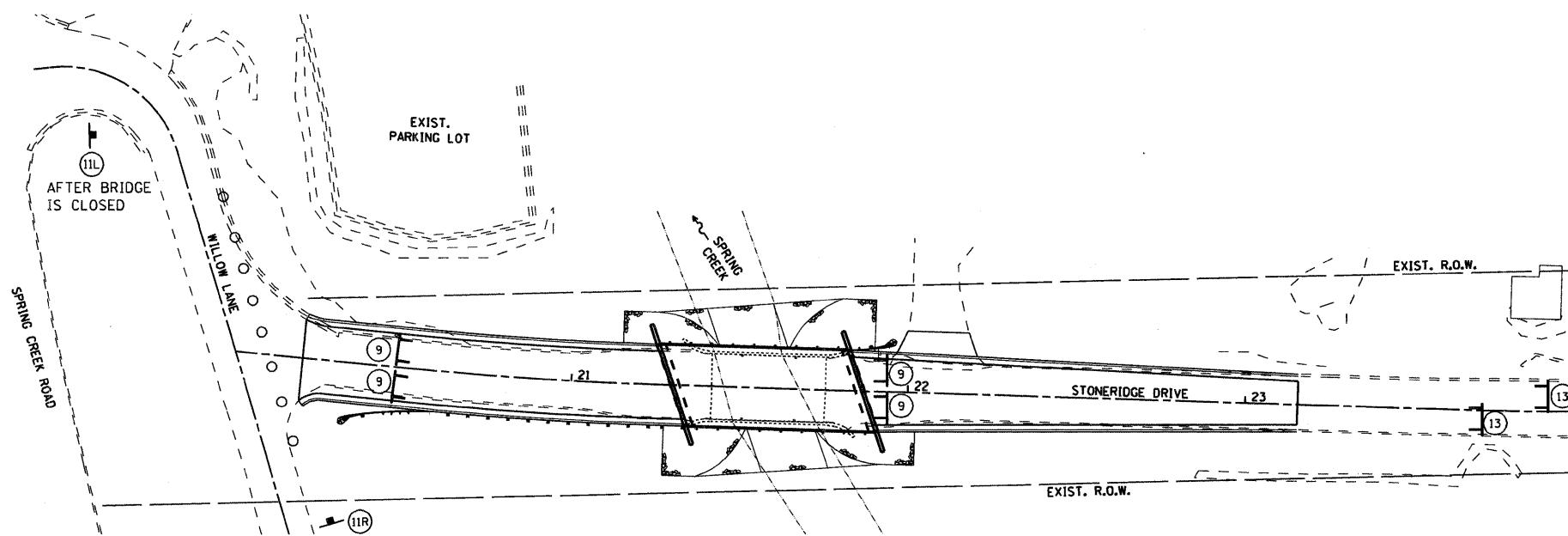
CITY OF ROCKFORD

TYPICAL SECTIONS STONERIDGE DRIVE	
SCALE: N.T.S.	SHEET NO. OF SHEETS STA. TO STA.

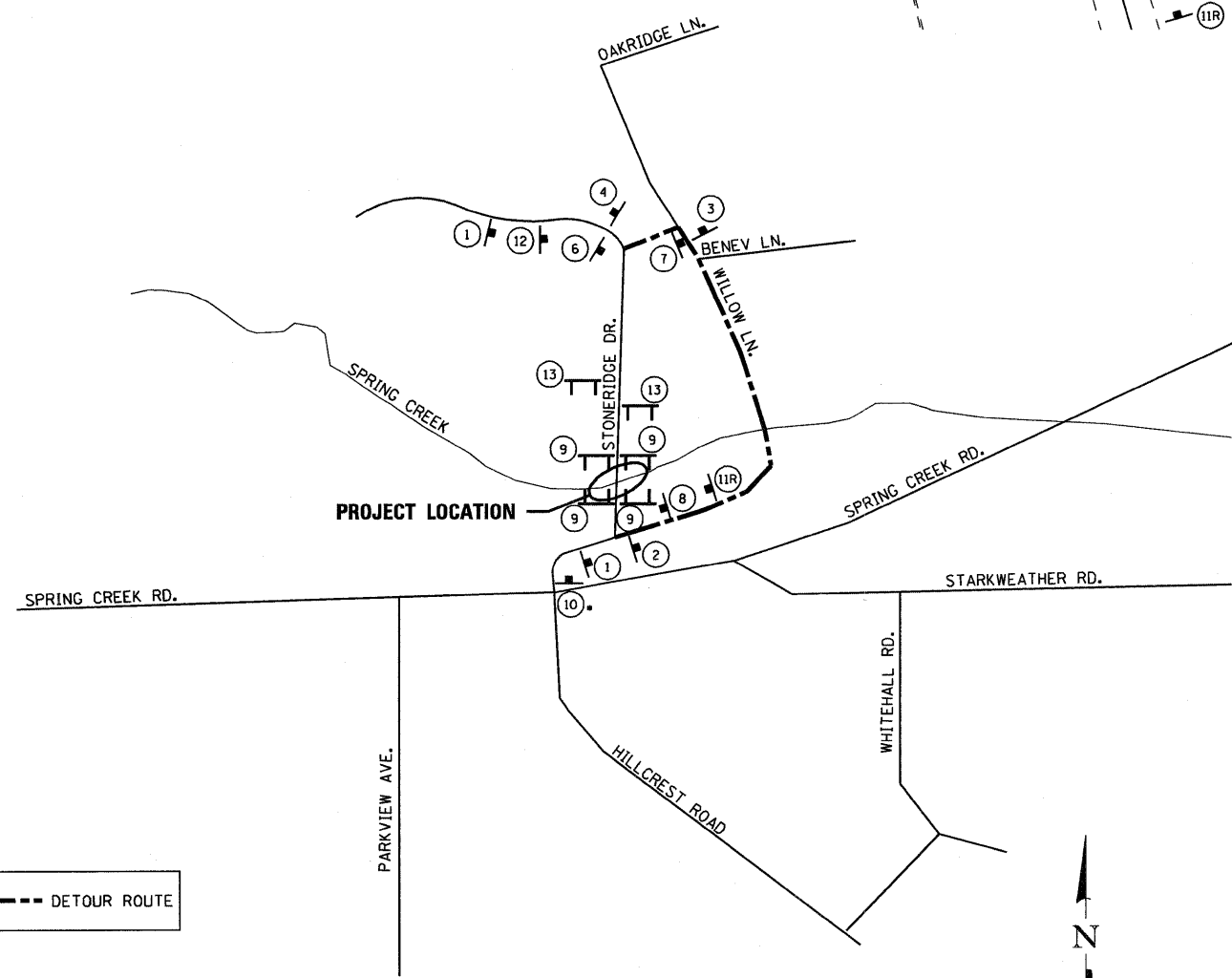
F.A.J. RTE.	SECTION	COUNTY	TOTAL SHEETS	SHEET NO.
	09-00559-00-BR	WINNEBAGO	21	4
CONTRACT NO. 85528				
FED. ROAD DIST. NO. 2 ILLINOIS FED. AID PROJECT				

ROAD CLOSURE GENERAL NOTES:

1. THE CONTRACTOR WILL BE ALLOWED TO CLOSE STONERIDGE DR. TO THRU TRAFFIC AT THE LOCATION SHOWN IN ACCORDANCE WITH THE SPECIAL PROVISIONS.
2. THE DETOUR ROUTE SHALL BE POSTED PRIOR TO CLOSING THE ROAD.
3. ALL TRAFFIC CONTROL WORK ASSOCIATED WITH THE ROAD CLOSURE, SIGNING, TEMPORARY FENCING AND BARRICADING SHALL BE INCLUDED IN THE PAY ITEM FOR "TRAFFIC CONTROL AND PROTECTION, SPECIAL".
4. THE CONTRACTOR SHALL GIVE THE ENGINEER AND THE CITY OF ROCKFORD A 72 HOUR NOTICE PRIOR TO PLACING THE ADVANCE NOTICE SIGNS.
5. ADVANCE NOTICE SIGNS, (10), SHALL BE PLACED TWO WEEKS PRIOR TO CLOSING THE ROADWAY.
6. ALL SIGNS SHALL CONFORM TO SPACING REQUIREMENTS SET FORTH IN THE "MANUAL ON UNIFORM TRAFFIC CONTROL DEVICES FOR STREETS AND HIGHWAYS".
7. THE CONTRACTOR SHALL MAINTAIN ACCESS TO ADJACENT DRIVEWAYS IN ACCORDANCE WITH THE SPECIAL PROVISIONS.



ROAD CLOSURE DETAIL AT BRIDGE
 COST INCLUDED IN "TRAFFIC CONTROL AND PROTECTION, SPECIAL"
 SEE DETOUR ROUTE PLAN AT LEFT FOR ADDITIONAL INFORMATION



PROPOSED DETOUR ROUTE
 • REPLACE WITH (11L) AFTER ROAD IS CLOSED

SIGN LEGEND

- | | | | | | |
|---|----------|---|-----|--|---|
| 1 | | W20-2 (48"x48") WITH STREET SIGN AND FLASHING AMBER LIGHT | 9 | | R11-2 (48"x30") WITH 2 FLASHING AMBER LIGHTS |
| 2 | | M4-9 (30"x24") WITH STREET SIGN AND DIRECTION OF TRAFFIC | 10 | | INFO (48"x30") |
| 3 | | M4-9L (30"x24") WITH STREET SIGN AND DIRECTION OF TRAFFIC | 11L | | W20-3 (48"x48") WITH FLASHING AMBER LIGHT
W1-6 (48"x24") |
| 4 | | M4-8a (24"x18") WITH STREET SIGN AND INFORMATION SIGN | 11R | | W20-3 (48"x48") WITH FLASHING AMBER LIGHT
W1-6 (48"x24") |
| 5 | NOT USED | | 12 | | W20-3 (48"x48") WITH FLASHING AMBER LIGHT |
| 6 | | M4-9L (30"x24") WITH STREET SIGN AND DIRECTION OF TRAFFIC | 13 | | R11-4 (60"x30") WITH 2 FLASHING AMBER LIGHTS |
| 7 | | M4-9R (30"x24") WITH STREET SIGN AND DIRECTION OF TRAFFIC | | | |
| 8 | | M4-8a (24"x18") WITH STREET SIGN AND INFORMATION SIGN | | | |
- CONE, BARRICADE OR DRUM PLACED AT ±15' CENTERS

COMPANY NAME: SEC Group, Inc.
 PROJECT CONTACT: Kevin Arft
 CLIENT: City of Rockford
 DATE PLOTTED: 1/5/2011 11:21:56 AM
 FILE NAME: 85100020-01-r.dgn
 PLOT NUMBER: 85100020-01-r.dgn
 PEN TABLE: Street.tbl

SEC Group, Inc.
 An IRI Group Company
 450 N. Poplar Street
 Rockford, IL 61101-4108
 P: 815.398.3770 F: 815.398.0761
 www.secgroup.com

USER NAME = Kar-ft	DESIGNED - JMW	REVISED -
FILE NAME = 85100020-01-r.dgn	DRAWN - RCB	REVISED -
PLOT SCALE = N.T.S.	CHECKED - RGD	REVISED -
PLOT DATE = 1/5/2011	DATE - 1/5/11	REVISED -

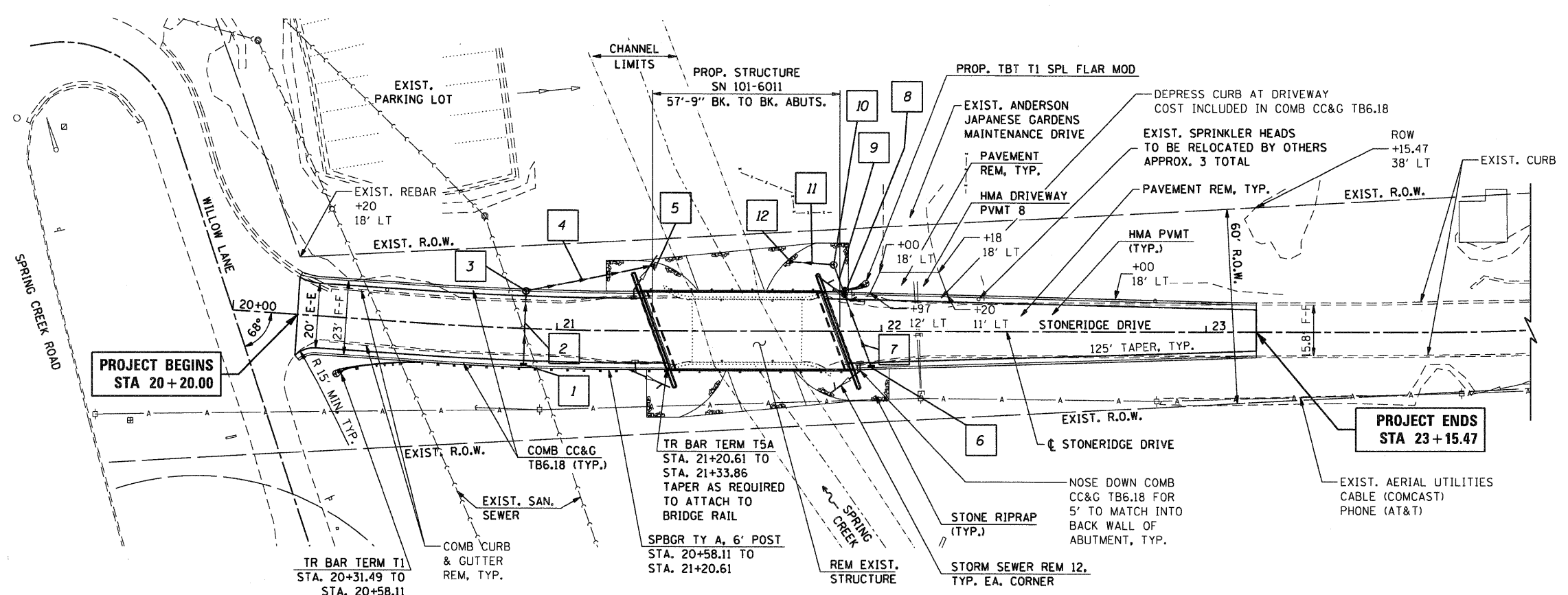
CITY OF ROCKFORD

**TEMPORARY DETOUR PLAN
 STONERIDGE DRIVE**

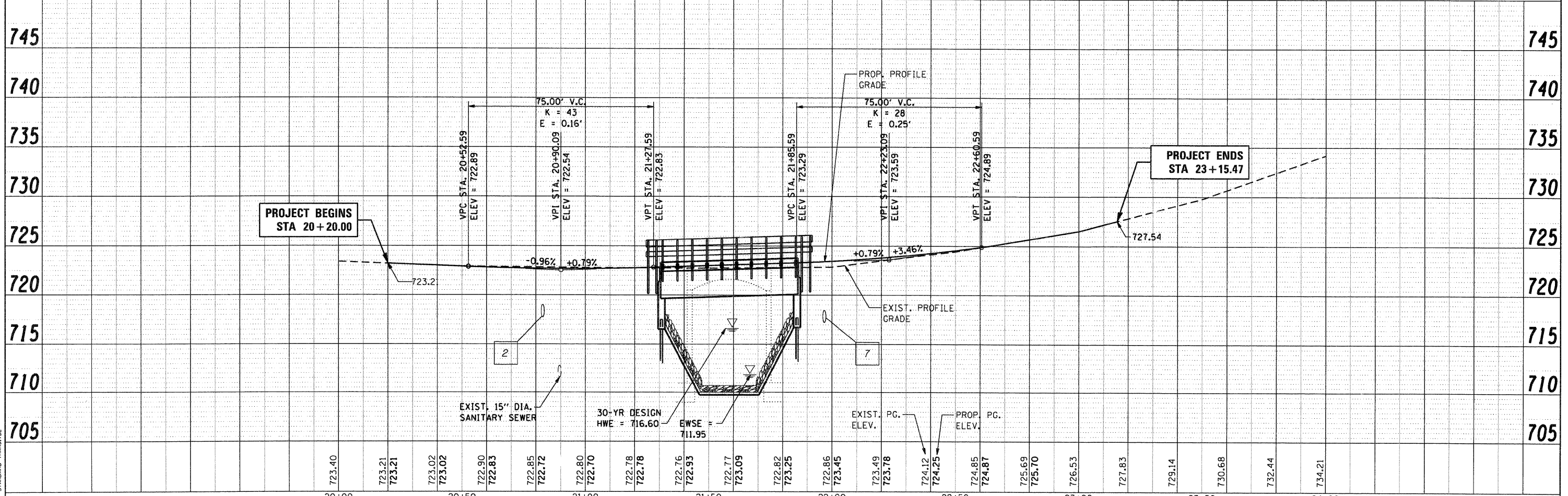
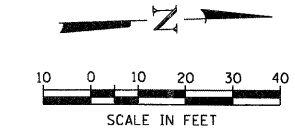
SCALE: N.T.S. SHEET NO. OF SHEETS STA. TO STA.

F.A.U. RTE.	SECTION	COUNTY	TOTAL SHEETS	SHEET NO.
	09-00559-00-BR	WINNEBAGO	21	5
FED. ROAD DIST. NO. 2 ILLINOIS FED. AID PROJECT			CONTRACT NO. 8552B	

INDICATES PROPOSED STORM SEWER TAG. SEE SHEET 3 FOR STORM SEWER TAG INFORMATION



PROP. CURVE SGR-1
PI STA. = 20+90.88
Δ = 3° 45' 55" (LT)
D = 5° 43' 46"
R = 1,000.00'
T = 32.87'
L = 65.72'
E = 0.54'
e = ----
T.R. = ----
S.E. RUN = ----
P.C. STA. = 20+58.01
P.T. STA. = 21+23.72



SEC GROUP, INC.
PROJECT CONTACT: Mike Arft
CITY of Rockford
DATE PLOTTED: 12/16/2010 12:56:00 PM
FILE NAME: 86100020-ppp-01.dgn
PLOT DRIVER: pcfplot
STANDARD-TRANS.TBL

<p>SEC Group, Inc. 420 N. Front Street Rockford, IL 61101-2138 L: 815.395.1778 F: 815.395.1781 www.secgroupinc.com</p>	<p>USER NAME = whood FILE NAME = 86100020-ppp-01.dgn PLOT SCALE = 1"=20' PLOT DATE = 12/16/2010</p>	<p>DESIGNED - JMW DRAWN - RCB CHECKED - RGD DATE - 12/16/10</p>	<p>REVISED - REVISED - REVISED - REVISED -</p>	<p>CITY OF ROCKFORD</p>		<p>STONERIDGE DRIVE OVER SPRING CREEK PLAN AND PROFILE</p>				<p>F.A.U. RTE. SECTION COUNTY TOTAL SHEETS SHEET NO. 09-00559-00-BR Winnebago 21 6 CONTRACT NO. 85528</p>
<p>SCALE: 1"=20' SHEET NO. 1 OF 1 SHEETS STA. STONERIDGE DRIVE</p>						<p>FED. ROAD DIST. NO. 2 ILLINOIS FED. AID PROJECT</p>				

EROSION CONTROL NOTES

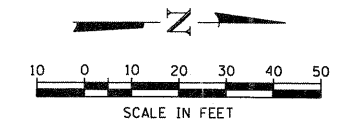
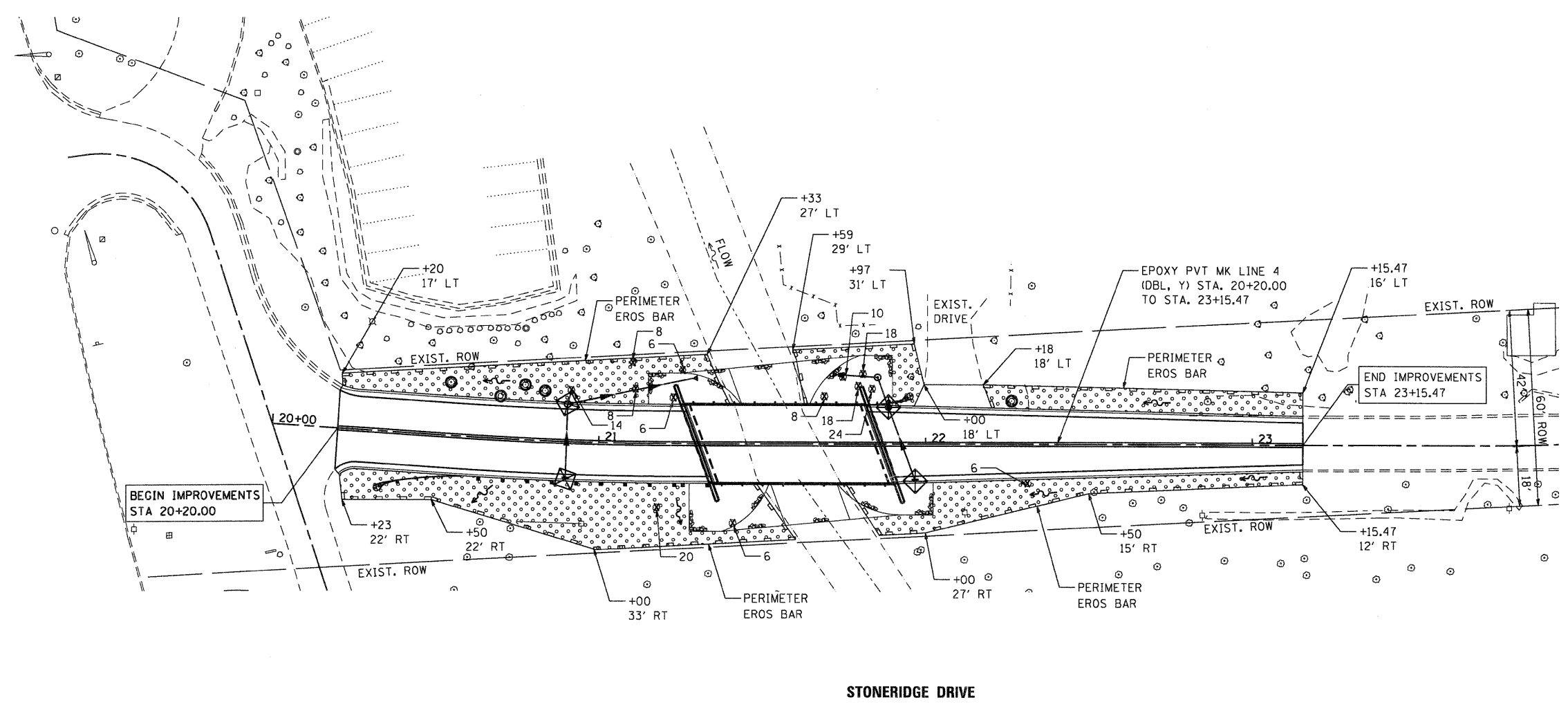
1. THE CONTRACTOR WILL BE REQUIRED TO IMPLEMENT AND MAINTAIN EROSION CONTROL MEASURES IMMEDIATELY AFTER STRIPPING OF EXISTING VEGETATION.
2. STOCKPILES OF SOIL AND OTHER BUILDING MATERIALS TO REMAIN IN PLACE MORE THAN THREE (3) DAYS SHALL BE FURNISHED WITH EROSION AND SEDIMENT CONTROL MEASURES (I.E. PERIMETER SILT FENCE). STOCKPILES TO REMAIN IN PLACE FOR 14 DAYS OR MORE SHALL RECEIVE TEMPORARY SEEDING. COST INCLUDED IN PERIMETER EROSION BARRIER.
3. THE CONTRACTOR SHALL TAKE ALL PRECAUTIONS TO PREVENT POLLUTION OF STORM WATER AND SHALL FOLLOW IEPA REGULATIONS & IDOT CONSTRUCTION MEMORANDUM NO. 06-60.
4. STABILIZATION MEASURES SHALL BE INITIATED WITHIN 7 DAYS OF CONSTRUCTION ACTIVITY TEMPORARILY OR PERMANENTLY CEASING IN AREAS WHERE IT WILL NOT OCCUR FOR A PERIOD OF 14 OR MORE CALENDAR DAYS.
5. THE SOIL EROSION AND SEDIMENT CONTROL PRACTICES WILL BE INSPECTED WEEKLY AND AFTER 1/2 INCH OF RAIN OR MORE BY THE INDIVIDUAL ON SITE IN CHARGE OF SOIL EROSION AND SEDIMENT CONTROL DURING THE CONSTRUCTION OF THE PROJECT.
6. INLET AND PIPE PROTECTION SHALL BE INSTALLED FOLLOWING THE COMPLETION AND STABILIZATION OF THE STORMWATER FACILITIES AND WILL REMAIN IN PLACE UNTIL THE CONTRIBUTING AREA IS STABILIZED.
7. ALL ADJACENT STREETS MUST BE KEPT CLEAR OF DEBRIS, INSPECTED DAILY AND CLEANED WHEN NECESSARY OR AS DIRECTED BY THE ENGINEER.
8. ALL SOIL EROSION AND SEDIMENT CONTROL PRACTICES ARE REFERENCED FROM THE ILLINOIS URBAN MANUAL.
9. PROTECTION AND STABILIZATION OF THE STREAMBED IN CONFORMANCE WITH THE ARMY CORPS OF ENGINEERS'S PERMIT SHALL BE INCLUDED IN THE COST OF STONE RIP RAP CLASS A4.

LEGEND

	PERIMETER EROSION BARRIER		FINAL RESTORATION OF DISTURBED AREAS - TOPSOIL FURNISH AND PLACE, 4" - SEEDING CLASS 2A - EROSION CONTROL BLANKET
	EXISTING R.O.W.		INLET AND PIPE PROTECTION
	DIRECTION OF FLOW		TREE REMOVAL OF GIVEN SIZE (PAID AS TREE REMOVAL, 6 TO 15 UNITS DIAMETER, OR TREE REMOVAL, OVER 15 UNITS DIAMETER)
	TREE ROOT PRUNING		

TEMPORARY EROSION CONTROL SEQUENCE OF CONSTRUCTION

1. ESTABLISH TEMPORARY EROSION CONTROL MEASURES AND ERECT PERIMETER EROSION BARRIER ALONG SITE BOUNDARIES PRIOR TO EARTHWORK.
2. INSTALL FINAL RESTORATION OF DISTURBED AREAS.



COMPANY NAME: SEC GROUP, INC.
 PROJECT CONTACT: Kevin Arft
 CLIENT: City of Rockford
 DATE PLOTTED: 12/16/2010 12:55:55 PM
 FILE NAME: 86100020-Eros.dgn
 PLOT DRIVER: pdf.plt
 PLOT TABLE: STANDARD-TRANS.TBL

SEC Group, Inc.
 An IAC Group Company
 420 N. First Street
 Rockford, IL 61101-1128
 T: 815.395.5778 F: 815.395.5781
 www.secgroupinc.com
 2620000000 - 2620000000 - New Lenox, IL - Chicago, IL

USER NAME = whood	DESIGNED - JMW	REVISED -
FILE NAME = 86100020-Eros.dgn	DRAWN - RCB	REVISED -
PLOT SCALE = 1"=20'	CHECKED - RGD	REVISED -
PLOT DATE = 12/16/2010	DATE - 12/16/10	REVISED -

CITY OF ROCKFORD

STRIPING, EROSION CONTROL AND RESTORATION PLAN
STONERIDGE DRIVE

SCALE: 1"=20' SHEET NO. OF SHEETS STA. TO STA.

F.A.U. RTE.	SECTION	COUNTY	TOTAL SHEETS	SHEET NO.
	09-00559-00-BR	WINNEBAGO	21	7
CONTRACT NO. 85528			FED. ROAD DIST. NO. 2 [ILLINOIS] FED. AID PROJECT	

Benchmarks:

- Chiseled square on the northeast corner of handhole located at the northeast corner of Stoneridge Drive and Spring Creek Road.
Elevation = 723.45 (NAVD88)
- Northeast bolt on top flange of hydrant located on the north side of Stoneridge Drive and at the southwest corner of the asphalt driveway for 2310 Stoneridge Drive.
Elevation = 768.36 (NAVD88)

Existing Structure:

This existing structure SN 101-6021 was built in 1937 as a single-span reinforced concrete slab supported on integral abutments. The design loading used is unknown. Structure to be removed and replaced. Road to be closed during construction. Traffic to be maintained with temporary detour route during construction.

Salvage:

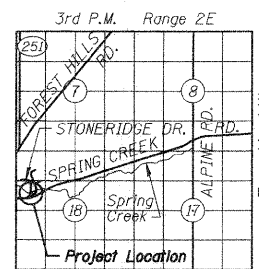
No salvage

DESIGN SCOUR ELEVATION TABLE

Design Scour Elevation (ft.)	S. Abut.	N. Abut.
	716.45	716.96

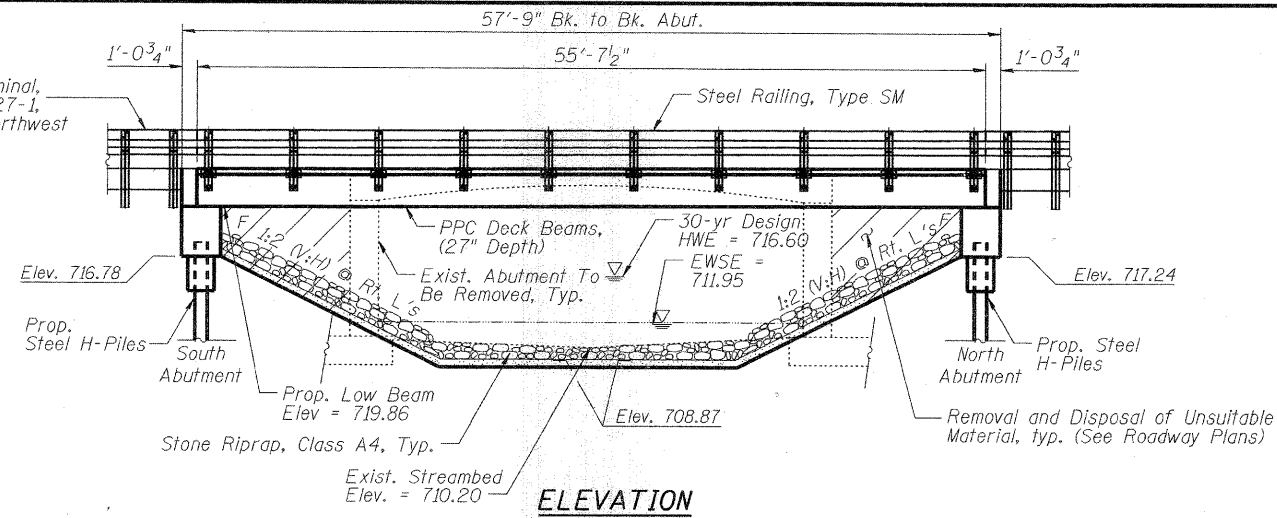
LEGEND

- ⊕ Soil Boring Location
- A — Existing Aerial Utilities (remaining in place)
- E — Existing Electrical (remaining in place)
- T — Existing Telephone (remaining in place)
- S — Existing Storm Sewer (to be removed and replaced as noted)
- P — Proposed Storm Sewer

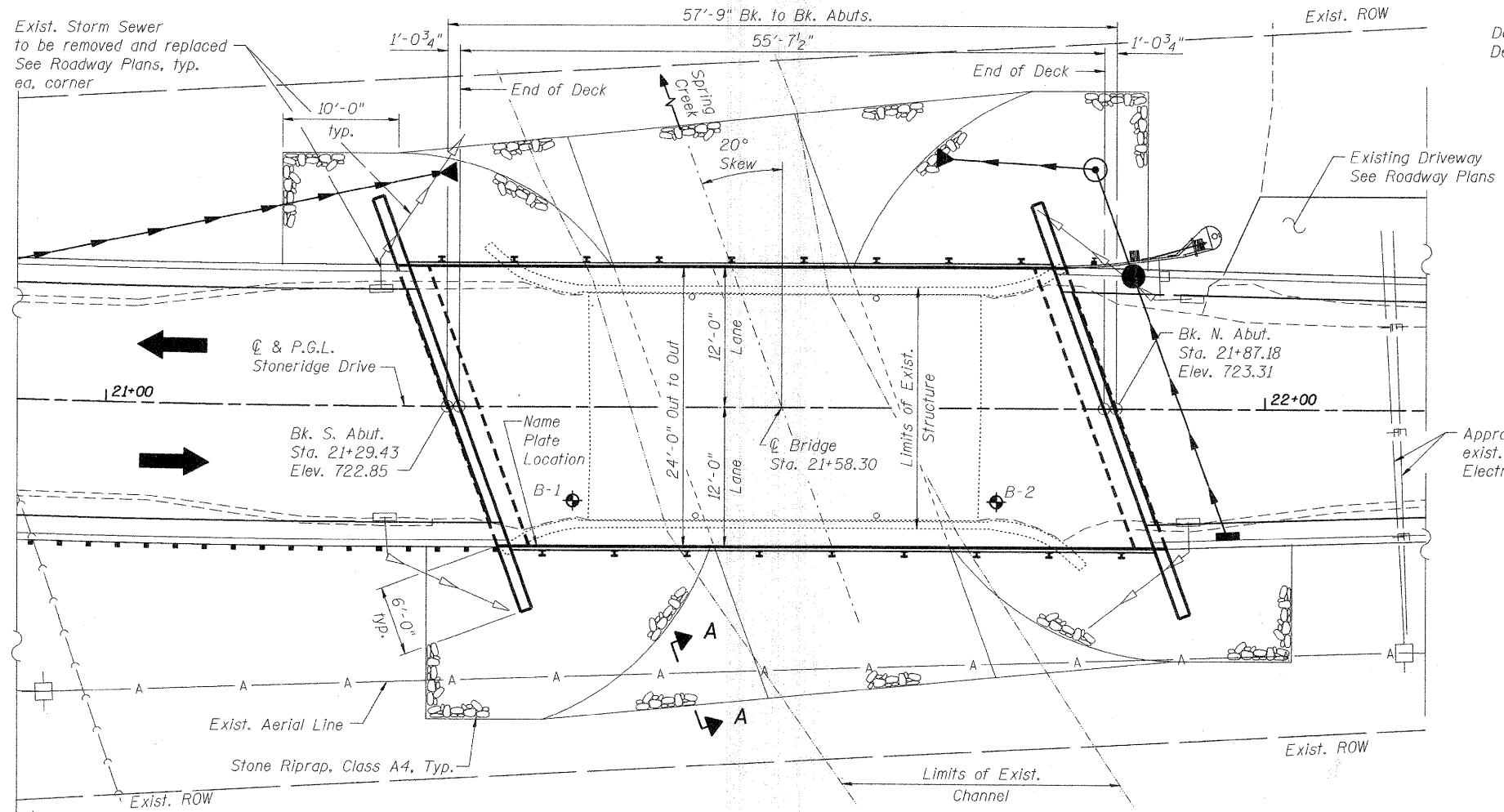


LOCATION SKETCH

Traffic Barrier Terminal, Type 5A Std. BLR 27-1, typ. Southeast and Northwest corners only.



ELEVATION



PLAN

WATERWAY INFORMATION

Drainage Area = 4.8 sq. mi. Low Grade Elev. 722.51 @ Sta. 21+00

Flood	Freq. Yr.	Q C.F.S.	Opening Sq. Ft.		Nat. H.W.F.	Head - Ft.		Headwater El.	
			Exist.	Prop.		Exist.	Prop.	Exist.	Prop.
Design	30	1000	103	122	716.1	0.1	0.0	716.2	716.1
	100	1560	155	195	716.6	0.2	0.0	716.8	716.6
Base	500	2050	190	230	718.2	0.5	0.0	718.7	718.2
Overtopping	>100				719.4	0.9	0.0	720.3	719.4

DESIGN SPECIFICATIONS

2010 AASHTO LRFD Bridge Design Specifications

DESIGN STRESSES

FIELD UNITS

f'c = 3,500 psi
fy = 60,000 psi (Reinforcement)

PRECAST PRESTRESSED UNITS

f'ci = 5,000 psi
f'c = 6,000 psi
fpu = 270,000 psi (1/2" φ low lax strands)
fpbt = 201,960 psi (1/2" φ low lax strands)

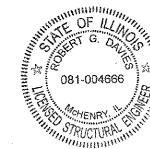
LOADING HL-93

Allow 50#/sq. ft. for future wearing surface.

SEISMIC DATA

Seismic Performance Zone (SPZ) = 1
Design Spectral Acceleration at 1.0 sec. (SD1) = 0.077
Design Spectral Acceleration at 0.2 sec. (SDS) = 0.128
Soil Site Class = D

To the best of my knowledge, information and belief, this bridge design is structurally adequate for the design loading shown on the plans. The design is an economical one for the style of structure and complies with requirements of the current "AASHTO LRFD Bridge Design Specifications".



Robert G. Davis
Structural Engineer Expires: 11/30/2010
SEC Group Inc.
An HR Green Company

COMPANY NAME: SEC GROUP, INC.
PROJECT CONTACT: Kevin Pratt
CLIENT: City of Rockford
DATE PLOTTED: 12/16/2010 8:51:35 AM
FILE NAME: 86100020-ape-01.dgn
PLOT DRIVER: PLOT.DWT
STANDARD: TRANSIT



USER NAME = whoad	DESIGNED - JMW	REVISED -
PLOT SCALE = N.T.S.	CHECKED - RGD	REVISED -
PLOT DATE = 12/16/2010	DRAWN - RCB	REVISED -
	CHECKED - 12/16/10	REVISED -

**STATE OF ILLINOIS
DEPARTMENT OF TRANSPORTATION**

**GENERAL PLAN AND ELEVATION
STONERIDGE DRIVE - S.N. 101-6011**

SHEET NO. S-1 OF S-12 SHEETS

F.A. RTE.	SECTION	COUNTY	TOTAL SHEETS	SHEET NO.
	09-00559-00-BR	WINNEBAGO	21	8
			CONTRACT NO. 85528	

ILLINOIS FED. AID PROJECT

GENERAL NOTES

Reinforcement bars shall conform to the requirements of ASTM A 706 Gr 60. See Special Provisions.

Reinforcement bars designated (E) shall be epoxy coated.

Layout of slope protection system may be varied in the field to suit ground conditions as directed by the Engineer.

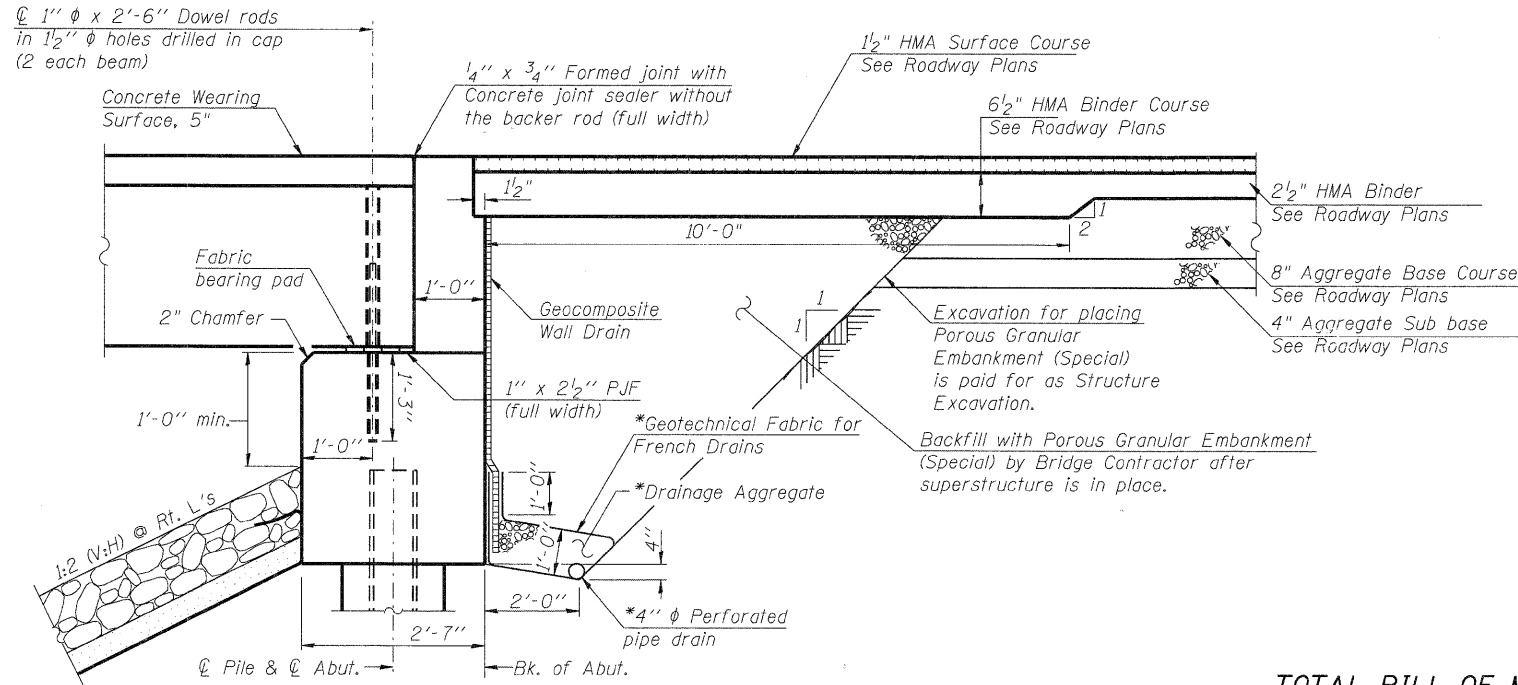
The Contractor shall obtain a construction permit from the Illinois Department of Natural Resources (IDNR), Office of Water Resources for any temporary construction activity placed in the water except cofferdams. This shall include the placement of material for run-arounds, causeways, etc. Any permit application by the Contractor shall refer to the IDOT Floodway permit and ACOE Section 404 permit numbers as shown in the contract documents.

The existing abutments shall be removed to an elevation 2'-0" below finished grade at a minimum, and as necessary to construct the new abutments and / or place rip rap. Cost included under Removal of Existing Structures. Any reinforcing bars projecting from the remainder of the existing structure shall be cut off flush with surface of the remaining concrete.

Bidders please note limited usage of Stoneridge north of the bridge will be permitted for demolition and construction activities. See note 19 on Sheet 2, General Notes.

INDEX OF SHEETS

- S-1 General Plan and Elevation
- S-2 Bill of Material and General Notes
- S-3 Deck Plan and Cross Section
- S-4 Superstructure Details
- S-5 Superstructure Details
- S-6 Superstructure Details
- S-7 South Abutment Details
- S-8 North Abutment Details
- S-9 Railing Details
- S-10 Steel Pile Details
- S-11 Soil Boring Logs
- S-12 Soil Boring Logs

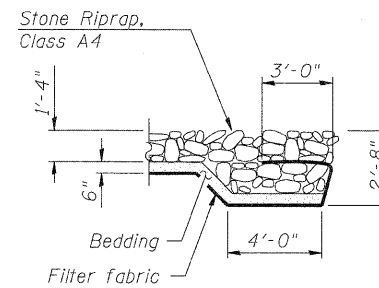


SECTION THRU ABUTMENT

(Horiz. dim. @ Rt. L's)

*Included in the cost of Pipe Underdrains for Structures.

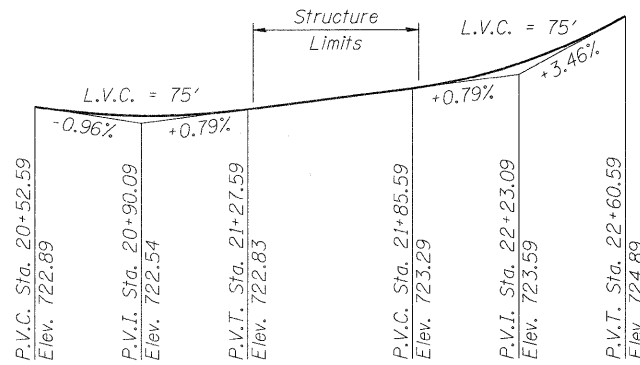
Note: All drainage system components shall extend to 2'-0" from the end of each wingwall except an outlet pipe shall extend until intersecting with the side slopes. The pipes shall drain into concrete headwalls. (See Article 601.05 of the Standard Specifications and Highway Standard 601101).



SECTION A-A
(See S-1)

TOTAL BILL OF MATERIAL

ITEM	UNIT	SUPER	SUB	TOTAL
Stone Riprap, Class A4	Sq. Yds.		390	390
Filter Fabric	Sq. Yds.		390	390
Removal of Existing Structures	Each	0.5	0.5	1
Structure Excavation	Cu. Yds.		167	167
Concrete Structures	Cu. Yds.		21.4	21.4
Concrete Superstructures	Cu. Yds.	5.6		5.6
Bridge Deck Grooving	Sq. Yds.	136		136
Concrete Encasement	Cu. Yds.		6.6	6.6
Protective Coat	Sq. Yds.	154		154
Precast, Prestressed Concrete Deck Beams, 27 inch	Sq. Ft.	1,335		1,335
Reinforcement Bars, Epoxy Coated	Pound	1,910	4,100	6,010
Steel Railing, Type SM	Foot	114		114
Furnishing Steel Piles HP12x53	Foot		600	600
Driving Piles	Foot		600	600
Test Pile Steel HP 12 x 53	Each	2		2
Name Plates	Each	1		1
Geocomposite Wall Drain	Sq. Yds.	49		49
Concrete Headwalls for Pipe Drains	Each	4		4
Porous Granular Embankment, (Special)	Cu. Yds.		84	84
Concrete Wearing Surface, 5"	Sq. Yds.	149		149
Pipe Underdrains for Structures, 4"	Foot	110		110



PROFILE GRADE
(along roadway)

SPRING CREEK
BUILT 20... BY CITY OF ROCKFORD
SEC. 09-00559-00-BR
STA. 21+58.30
STR. NO. 101-6011 LOADING HL93

NAME PLATE
See Std. 515001

SEC GROUP, INC.
Katy, TX
City of Rockford
12/16/2010 11:17:08 AM
86100200-bgen-01.dgn
PLOT DRIVER:
PEN TABLE:
standard-trans.tbl

SEC Group, Inc.
An HR Green Company
422 N. Hunt Street
Mokena, IL 60452-2138
L 815.281.1778 F 815.281.1781
www.secgroupinc.com

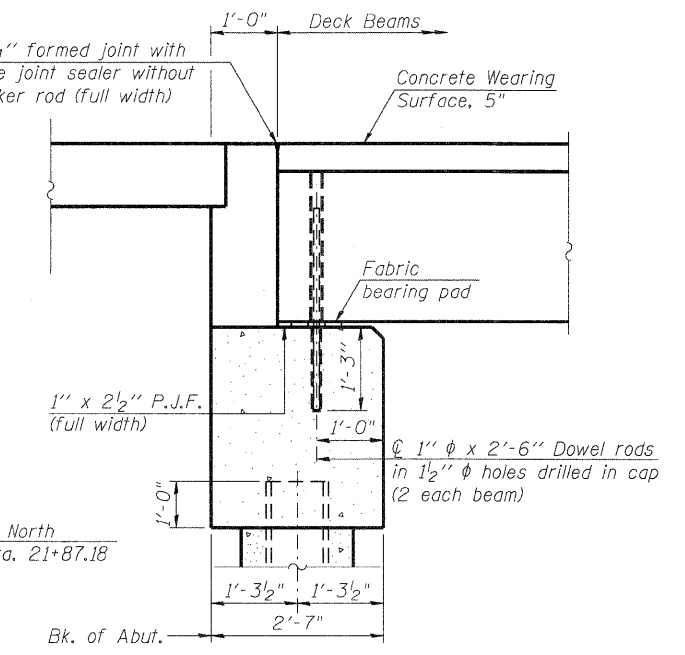
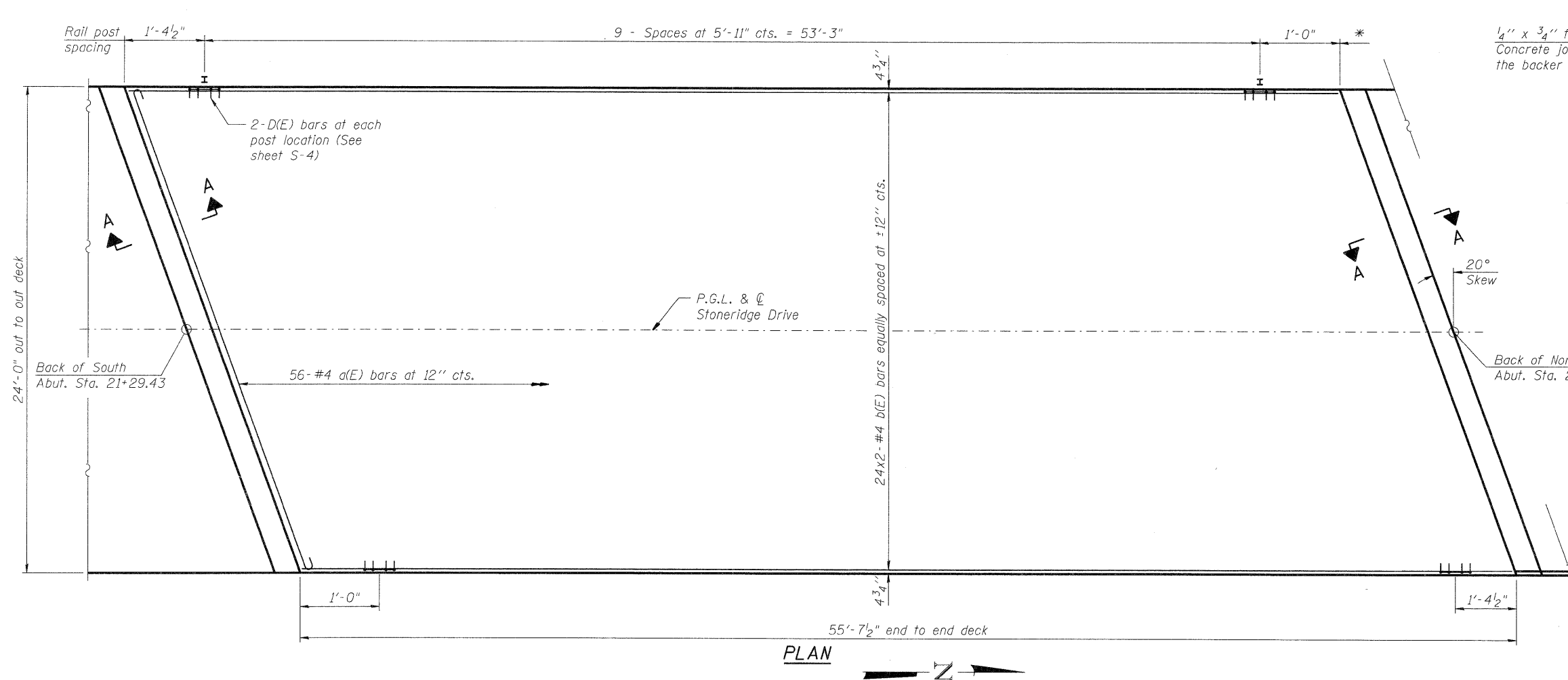
USER NAME = whood	DESIGNED - JMW	REVISED -
PLOT SCALE = N.T.S.	CHECKED - RGD	REVISED -
PLOT DATE = 12/16/2010	DRAWN - RCB	REVISED -
	CHECKED - 12/16/10	REVISED -

STATE OF ILLINOIS
DEPARTMENT OF TRANSPORTATION

BILL OF MATERIAL AND GENERAL NOTES
STONERIDGE DRIVE - S.N. 101-6011

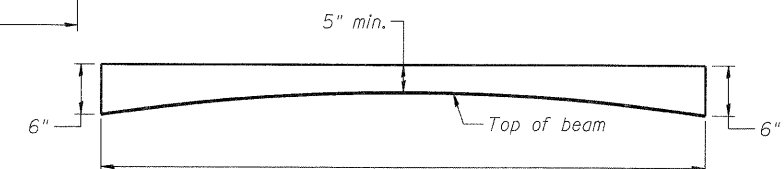
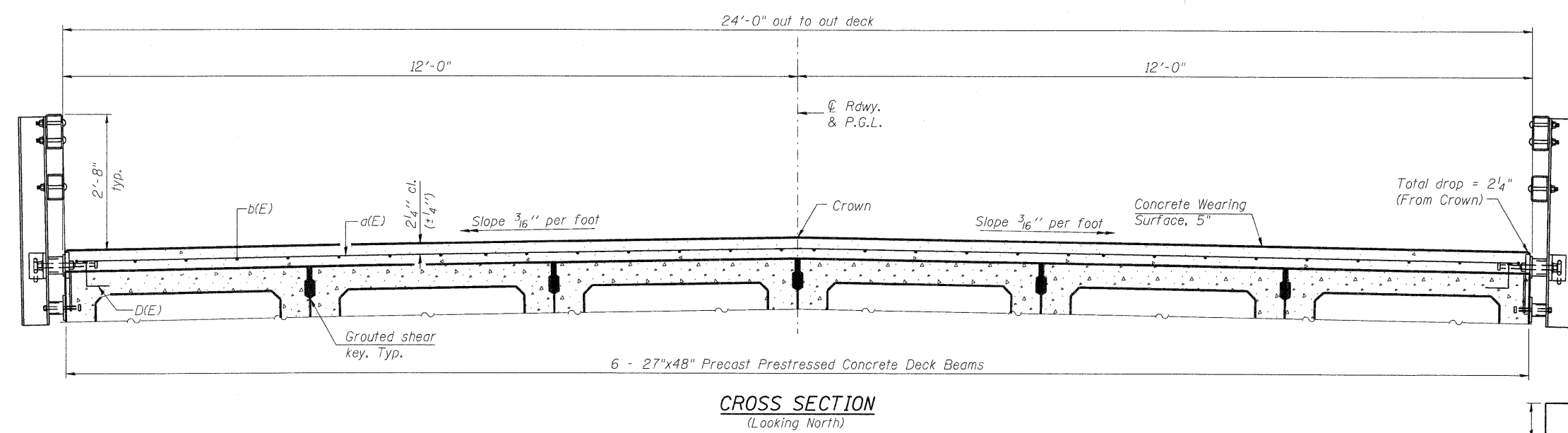
F.A. RTE.	SECTION	COUNTY	TOTAL SHEETS	SHEET NO.
	09-00559-00-BR	WINNEBAGO	21	9
CONTRACT NO. 85528			ILLINOIS FED. AID PROJECT	

SHEET NO. S-2 OF S-12 SHEETS



Notes:
All concrete wearing surfaces shall be placed prior to casting a backwall.
See sheet S-6 for fabric bearing pad details.

* = For end of Steel Railing, Type SM at end of deck See Railing Details on Sheet S-9.



Notes:
See sheet S-4 through S-6 for Superstructure Details and Bill of Material.
Bars indicated thus 20 x 2-#4 etc. indicates 20 lines of bars with 2 lengths per line.
Spacing of a(E) bars shall be measured along the Ⓞ of structure.

MINIMUM BAR LAP
#4 bar = 2'-1"

Thickness is based on calculated camber minus dead load deflection of PPC Deck Beams. Actual camber of individual units may vary up to ±1/2". Adjust thickness to match PGL and cross slope.

SEC GROUP, INC.
PROJECT CONTACT:
CLIENT: City of Rockford
DATE PLOTTED: 12/16/2010 10:15:41 AM
FILE NAME: 86100020-das-01.dgn
PLOT DRIVER: PLOT.plt
PLOT TABLE: stendero-trans.tbl

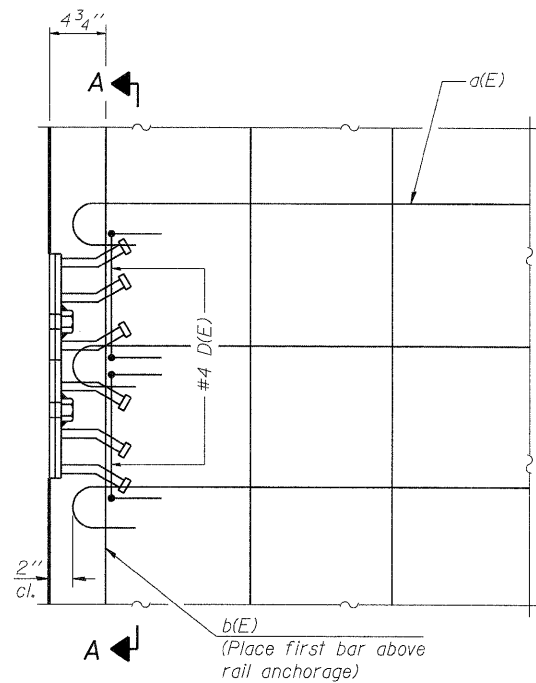
SEC Group, Inc.
Professional Design Firm # 154-000108
2014 Green Company
420 N. First Street,
Moline, IL 61905-2139
L: 815.385.1779 F: 815.385.1781
www.secgroupinc.com
Chicago, IL New Lenox, IL Chicago, IL

USER NAME = whood	DESIGNED - JMW	REVISIONS
PLOT SCALE = N.T.S.	CHECKED - RGD	REVISIONS
PLOT DATE = 12/16/2010	DRAWN - RCB	REVISIONS
	CHECKED - 12/16/10	REVISIONS

STATE OF ILLINOIS
DEPARTMENT OF TRANSPORTATION

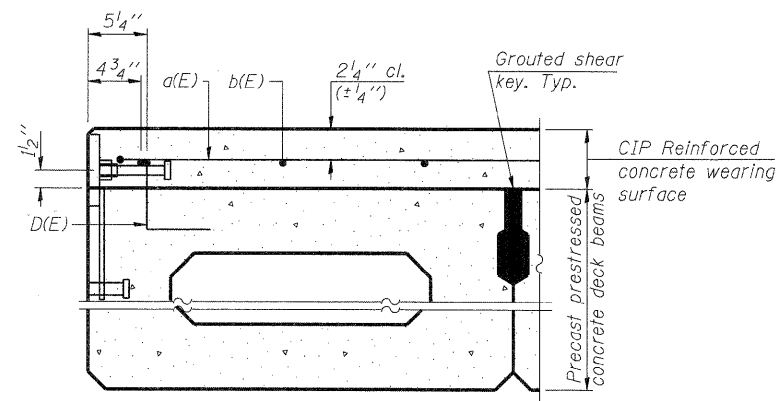
DECK PLAN AND CROSS SECTION
STONERIDGE DRIVE - S.N. 101-6011
SHEET NO. S-3 OF 5-12 SHEETS

F.A. RTE.	SECTION	COUNTY	TOTAL SHEETS	SHEET NO.
09-00559-00-BR		WINNEBAGO	21	10
CONTRACT NO. 85528			ILLINOIS FED. AID PROJECT	

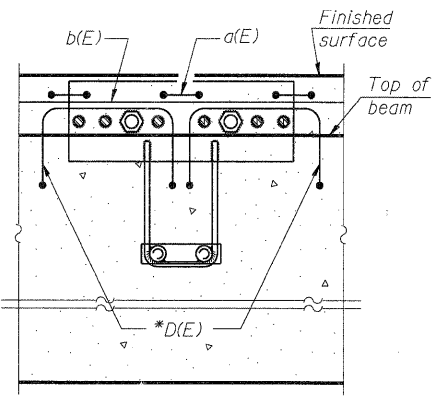


PLAN

Notes:
Formwork necessary for the wearing surface may be secured utilizing the bottom rail anchorage inserts and/or additional inserts cast into the beam.

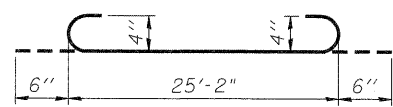


SECTION THRU FASCIA BEAM



SECTION A-A

* See Sheet S-6



BAR a(E)

**SUPERSTRUCTURE
BILL OF MATERIAL**

Bar	No.	Size	Length	Shape
a(E)	56	#4	26'-2"	
b(E)	48	#4	29'-0"	
Reinforcement Bars, Epoxy Coated			Pound	1,910
Concrete Wearing Surface, 5"			Sq. Yd.	149.0

Bars indicated thus 1 x 2-#4 etc. indicates 1 line of bars with 2 lengths per line.

COMPANY NAME: SEC GROUP, INC.
PROJECT CONTACT: Kevin Arft
CLIENT: City of Rockford
DATE PLOTTED: 12/16/2010 11:17:19 AM
FILE NAME: 86100020-sup-01.dgn
PLOT DRIVER: PDF.plt
PEN TABLE: standard-trans.tbl

Illinois Professional Design Firm # 104-000109
SEC Group, Inc.
An HR Group Company
420 N. Third Street
Rockford, IL 61102-2150
1 815 398 1778 F 815 398 1781
www.secgroupinc.com
464 Perry St., Skokie, IL, New Lenox, IL, Chicago, IL

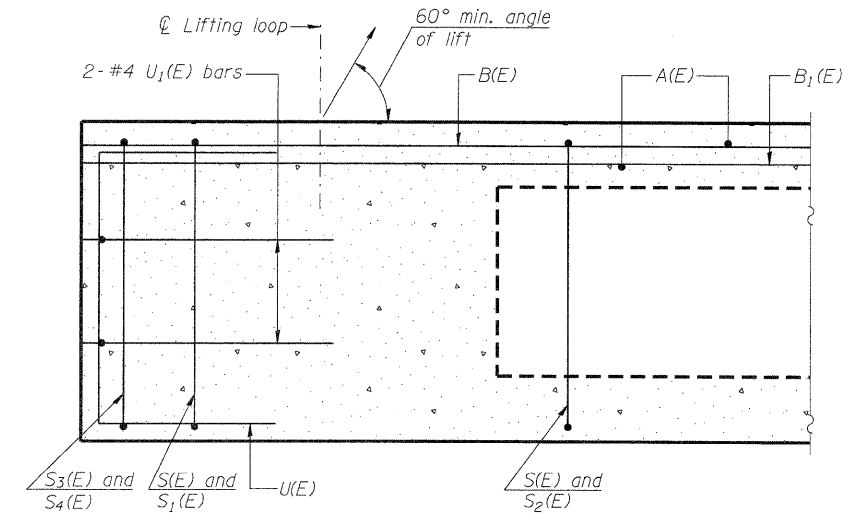
USER NAME = whood	DESIGNED - JMW	REVISOR -
PLLOT SCALE = N.T.S.	CHECKED - RGD	REVISIONS -
PLLOT DATE = 12/16/2010	DRAWN - RCB	
	CHECKED - 12/16/10	REVISOR -

**STATE OF ILLINOIS
DEPARTMENT OF TRANSPORTATION**

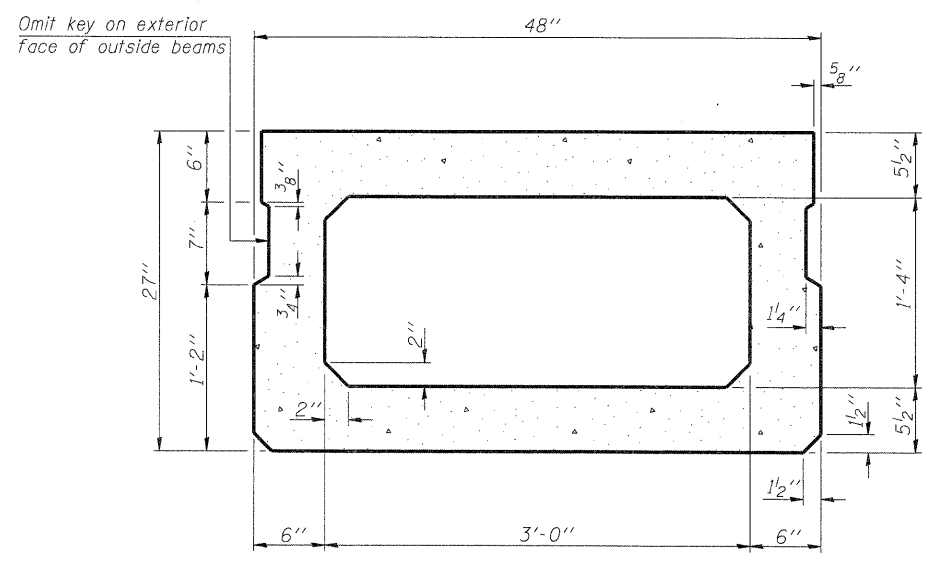
**SUPERSTRUCTURE DETAILS
STONERIDGE DRIVE - S.N. 101-6011**

SHEET NO. S-4 OF S-12 SHEETS

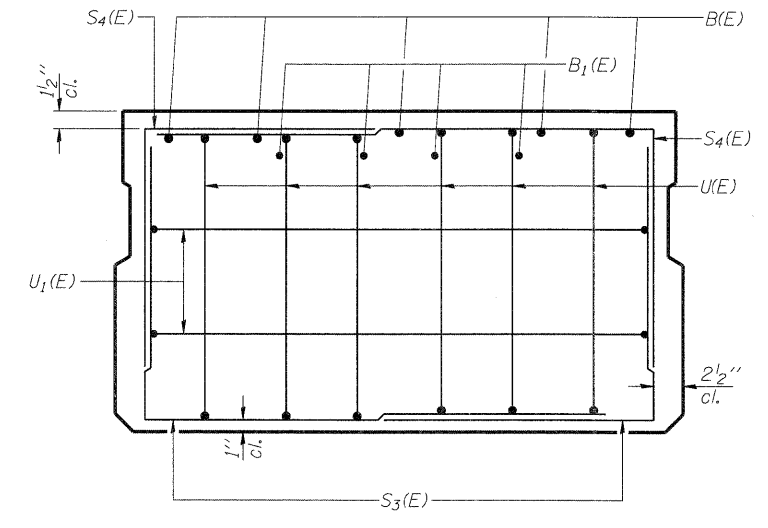
F.A. RTE.	SECTION	COUNTY	TOTAL SHEETS	SHEET NO.
	09-00559-00-BR	WINNEBAGO	21	11
CONTRACT NO. 85528			ILLINOIS FED. AID PROJECT	



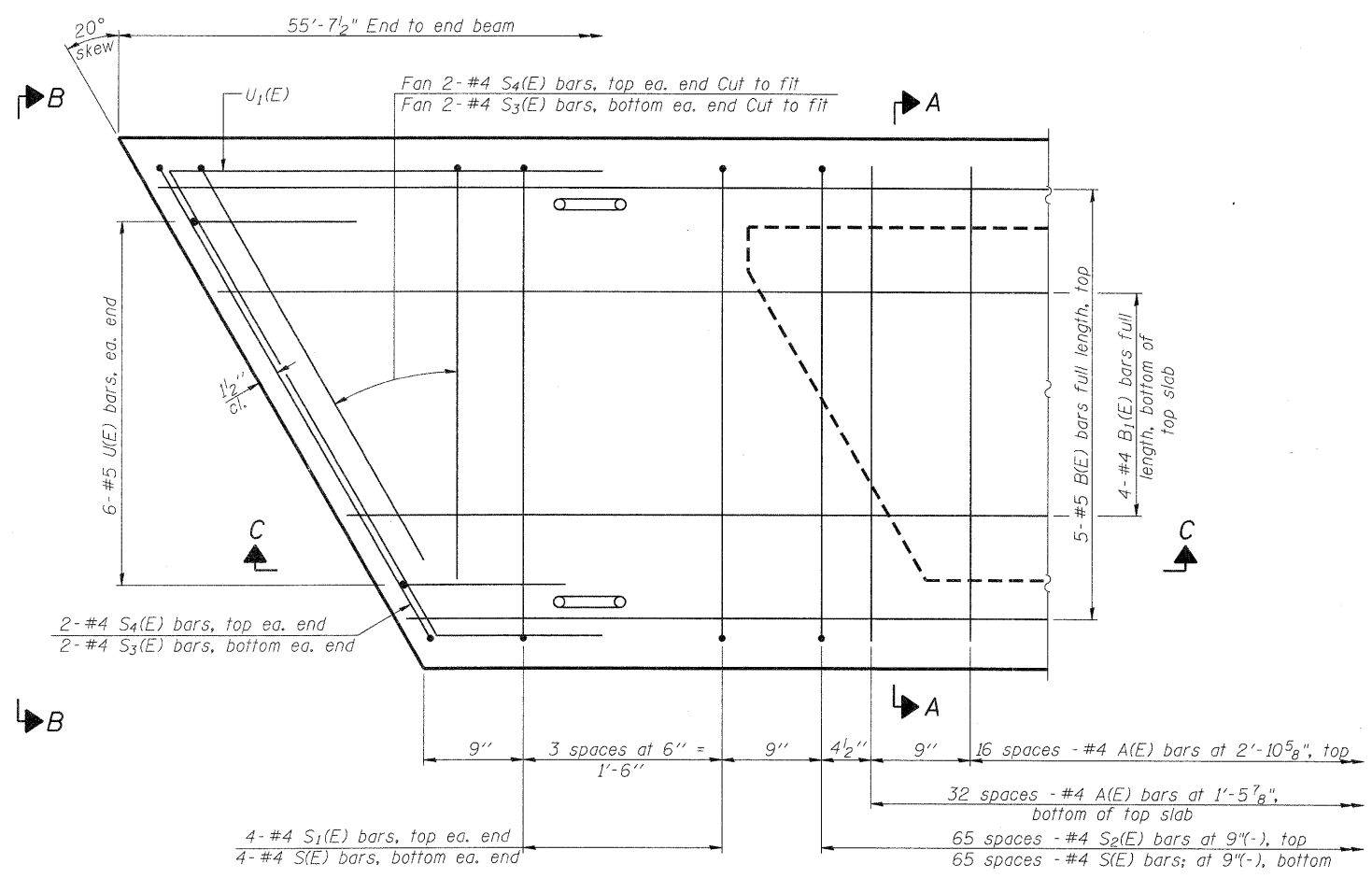
SECTION C-C



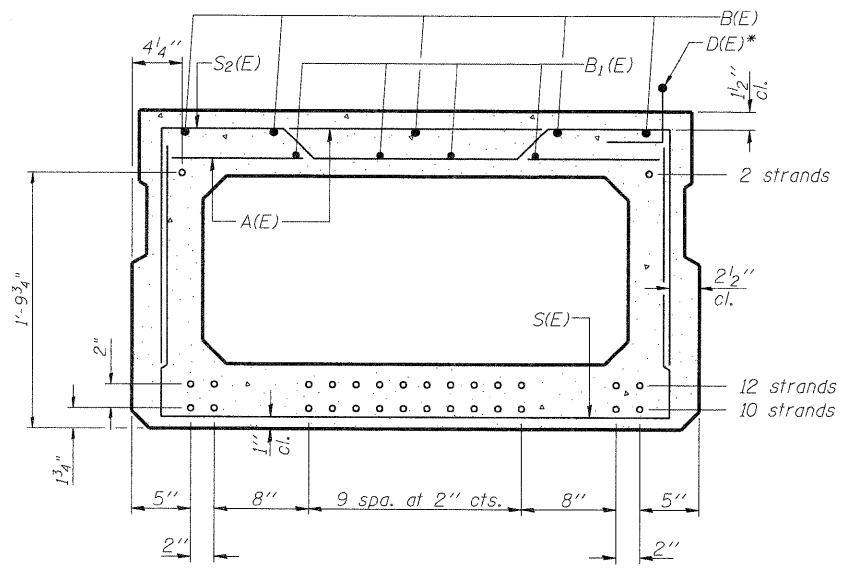
SECTION A-A
(Showing dimensions)



VIEW B-B



PLAN VIEW



SECTION A-A
(Showing reinforcement and permissible strand locations)

Note: Place the number of strands specified in each row symmetrically about the centerline of beam in the permissible strand locations shown.

BAR LIST
ONE BEAM ONLY
(For information only)

Bar	No.	Size	Length	Shape
A(E)	50	#4	3'-7"	—
B(E)	5	#5	55'-4 1/2"	—
B1(E)	4	#4	55'-4 1/2"	—
D(E)*	20	#4	2'-9"	┌
S(E)	74	#4	7'-5"	┌
S1(E)	8	#4	6'-11"	┌
S2(E)	66	#4	7'-2"	┌
S3(E)	12	#4	5'-1"	┌
S4(E)	12	#4	4'-10"	┌
U(E)	12	#5	4'-6"	┌
U1(E)	4	#4	7'-6"	┌

* 20-D(E) bars are required for each exterior beam only.

Note: See sheet S-6 for additional details and Bill of Material.

Note: Spacing of S(E) and S2(E) bars may be adjusted up to 4" in the immediate area of the transverse tie diaphragms to miss the block outs for the transverse ties.

COMPANY NAME: SEC GROUP, INC.
PROJECT CONTACT: K. J. ...
CLIENT: City of Rockford
DATE PLOTTED: 12/16/2010 11:17:23 AM
FILE NAME: 86100020-sup-02.dgn
PLOT DRIVER: PDF-DIT
PEN TABLE: standard-trans.tbl

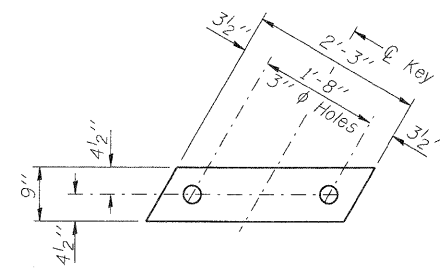
SEC Group, Inc.
An HR Group Company
401 N. Front Street
Rockford, IL 61102-3139
1-815-398-1118 • 815-398-1181
www.secgroupinc.com
©2010 SEC Group, Inc. All Rights Reserved.

USER NAME = whoad	DESIGNED - JMW	REVISED -
PLOT SCALE = N.T.S.	CHECKED - RGD	REVISED -
PLOT DATE = 12/16/2010	DRAWN - RCB	REVISED -
	CHECKED - 12/16/10	REVISED -

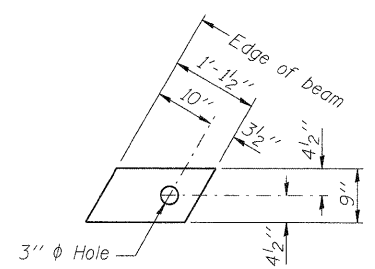
STATE OF ILLINOIS
DEPARTMENT OF TRANSPORTATION

SUPERSTRUCTURE DETAILS
STONERIDGE DRIVE - S.N. 101-6011
SHEET NO. S-5 OF S-12 SHEETS

F.A. RTE.	SECTION	COUNTY	TOTAL SHEETS	SHEET NO.
	09-00559-00-BR	WINNEBAGO	21	12
CONTRACT NO. 85528			ILLINOIS FED. AID PROJECT	



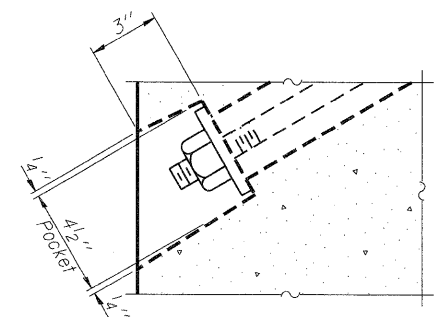
FABRIC BEARING PAD
(Interior)



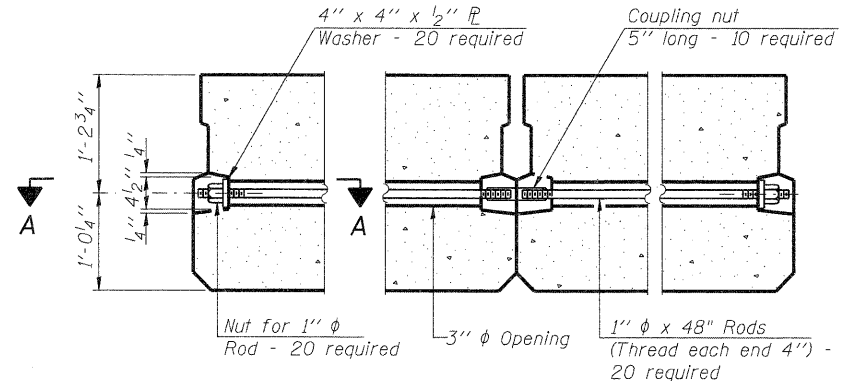
FABRIC BEARING PAD
(Exterior)

FIXED

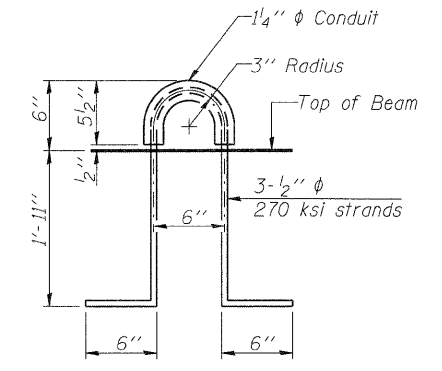
Notes:
All bearing pads shall be 1" thick.
Omit holes when using expansion bearings.
Expansion bearing pad shall be bonded to the substructure.



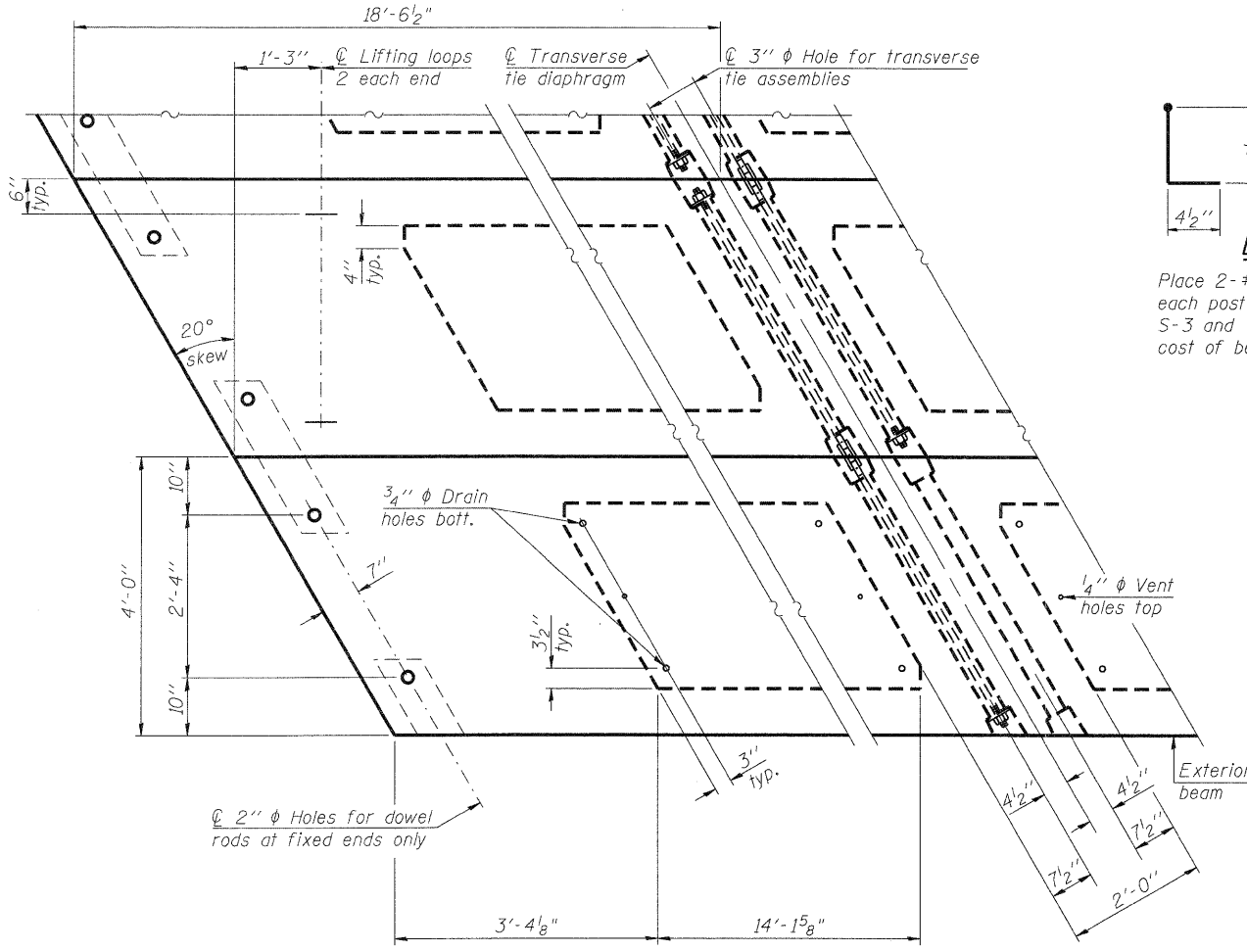
SECTION A-A



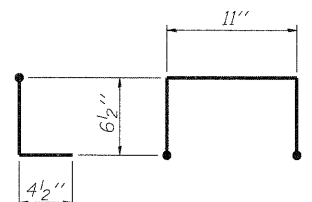
TYPICAL TRANSVERSE TIE ASSEMBLY



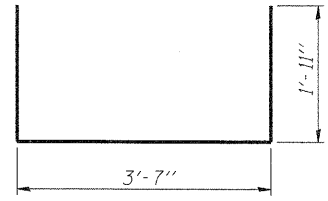
LIFTING LOOP DETAIL



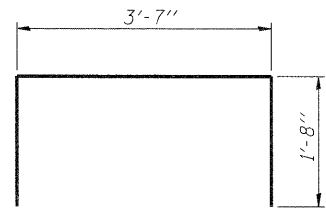
PLAN VIEW



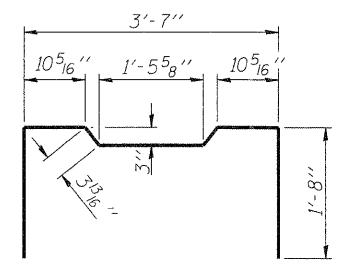
BAR D(E)
Place 2-#4 D(E) bars in beam at each post location as shown on Sheets S-3 and S-4. D(E) bar included in cost of beam.



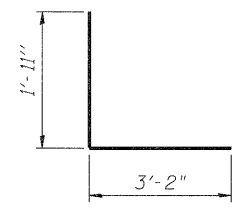
BAR S(E)



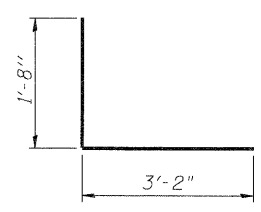
BAR S1(E)



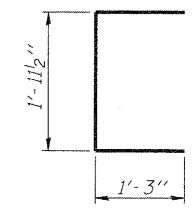
BAR S2(E)



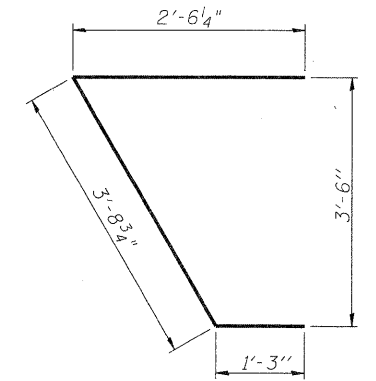
BAR S3(E)



BAR S4(E)



BAR U(E)



BAR U1(E)

NOTES

Prestressing steel shall be uncoated high strength, low relaxation 7-wire strand, Grade 270. The nominal diameter shall be 1/2" and the nominal cross-sectional area shall be 0.153 sq. in. The 1" rods in the transverse tie assembly shall be tightened to a snug fit and the threads set. Pockets on exterior faces of bridge shall be filled with grout after transverse tie assembly is in place.
Reinforcement bars shall conform to ASTM A 706, Grade 60. (See Special Provisions).
Two 1/8" fabric adjusting shims of the dimensions of the exterior bearing pad shall be provided for each bearing pad location.
A minimum 2 1/2" diameter lifting pin shall be used to engage the lifting loops during handling.
Corrosion Inhibitor, per Article 1020.05(b)(12) and 1021.06 of the Standard Specifications, shall be used in the concrete for precast prestressed concrete deck beams.
Compressive strength of prestressed concrete, f'c, shall be 6000 psi.
Compressive strength of prestressed concrete at release, f'ci, shall be 5000 psi.

BILL OF MATERIAL

Precast Prestressed Conc. Deck Bms. (27" depth)	Sq. Ft.	1,335
---	---------	-------

COMPANY NAME: SEC GROUP, INC.
PROJECT CONTACT: Keith A. Art
CLIENT: City of Rockford
DATE PLOTTED: 12/16/2010 11:28 AM
FILE NAME: 86100020-sup-03.dgn
PLOT DRIVER: PDP.plt
PEN TABLE: standard-trans.tbl

SEC Group, Inc.
420 N. Front Street
Rockford, IL 61102-2138
Tel: 815.395.1778 Fax: 815.395.1781
www.secgroupinc.com

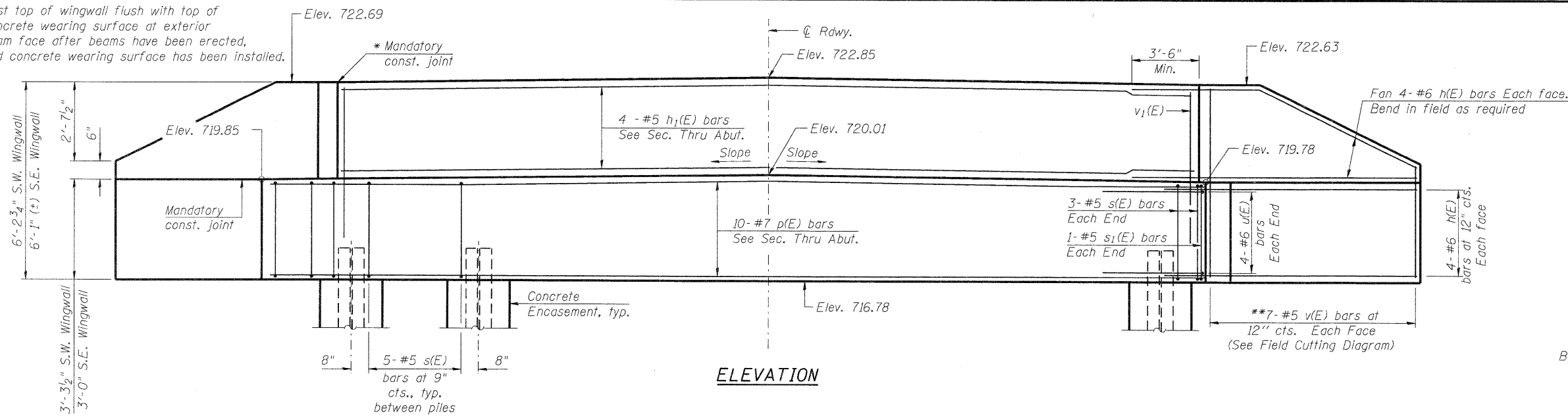
USER NAME = whood	DESIGNED - JMW	REVISIONS
PLOT SCALE = N.T.S.	CHECKED - RGD	REVISIONS
PLOT DATE = 12/16/2010	DRAWN - RCB	REVISIONS
	CHECKED - 12/16/10	REVISIONS

STATE OF ILLINOIS
DEPARTMENT OF TRANSPORTATION

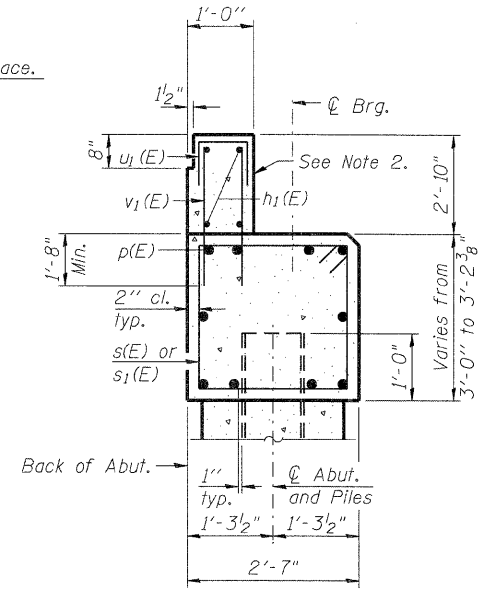
SUPERSTRUCTURE DETAILS
STONERIDGE DRIVE - S.N. 101-6011

F.A. RTE.	SECTION	COUNTY	TOTAL SHEETS	SHEET NO.
	09-00559-00-BR	WINNEBAGO	21	13
CONTRACT NO. 85528			ILLINOIS FED. AID PROJECT	

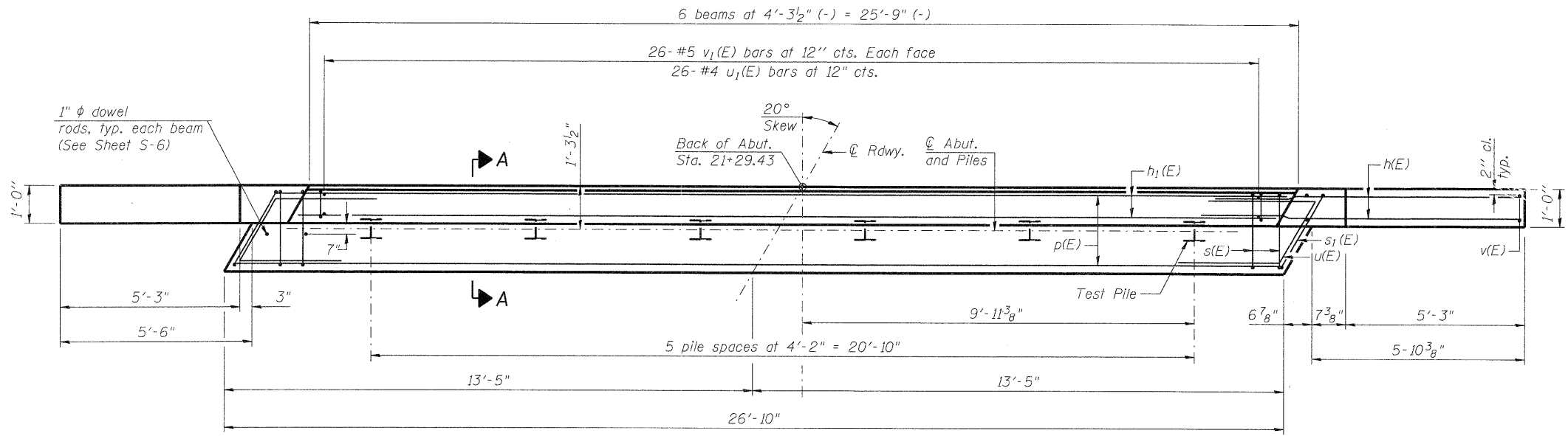
*Cast top of wingwall flush with top of concrete wearing surface at exterior beam face after beams have been erected, and concrete wearing surface has been installed.



ELEVATION



SECTION A-A
(Dimensions are at Rt. L's)



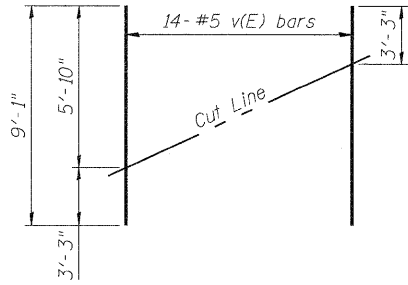
PLAN

BILL OF MATERIAL

Bar	No.	Size	Length	Shape
h(E)	32	#6	10'-6"	—
h1(E)	4	#5	25'-5"	—
p(E)	10	#7	26'-6"	—
s(E)	31	#5	10'-9"	□
s1(E)	2	#5	11'-0"	□
u(E)	8	#6	7'-5"	┌
u1(E)	26	#4	3'-7"	┌
v(E)	14	#5	9'-1"	—
v1(E)	52	#5	4'-6"	—
Structure Excavation		Cu. Yd.	83.5	
Concrete Superstructure		Cu. Yd.	2.8	
Concrete Structures		Cu. Yd.	10.7	
Reinforcement Bars, Epoxy Coated		Pound	2,050	
Furnishing Steel Piles, HP12x53		Foot	300	
Driving Piles		Foot	300	
Test Pile, Steel HP 12x53		Each	1	
Concrete Encasement		Cu. Yd.	3.3	

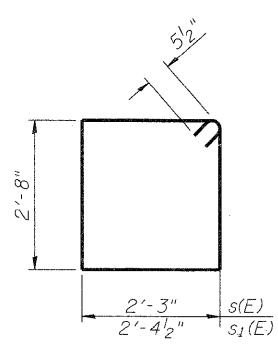
PILE DATA

Type: Steel - HP12x53
Nominal Required Bearing: 225K
Factored Resistance Available: 110K
Est. Length: 60'
No. Production Piles: 5
No. Test Piles: 1

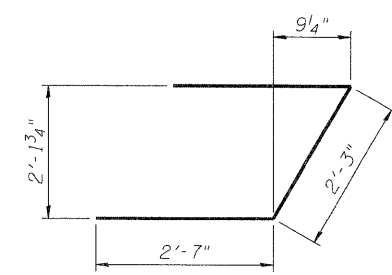


FIELD CUTTING DIAGRAM

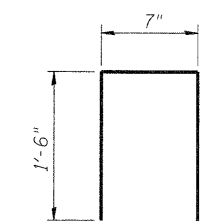
**Order v(E) full length. Cut as shown and use remainder of bars in opposite face.



BARS s(E) & s1(E)



BAR u(E)



BAR u1(E)

Notes:
1. For details of piles and Concrete Encasement, see sheet S-10.
2. Cast backwall after beams and concrete wearing surface have been erected.

SEC GROUP, INC.
PROJECT CONTACT: Kevin Arft
CLIENT: City of Rockford
DATE PLOTTED: 12/16/2010 11:13:33 AM
FILE NAME: 86100020-abt-01.dgn
PLOT DRIVER: PLOT.plt
PEN TABLE: standard-trans.tbl

SEC Group, Inc.
423 N. First Street
Rockford, IL 61103-2138
Tel: 815.395.1778 Fax: 815.395.1781
www.secgroupinc.com

USER NAME = jwhod	DESIGNED = JMW	REVISED =
PLOT SCALE = N.T.S.	CHECKED = RGD	REVISED =
PLOT DATE = 12/16/2010	DRAWN = RCB	REVISED =
	CHECKED = 12/16/10	REVISED =

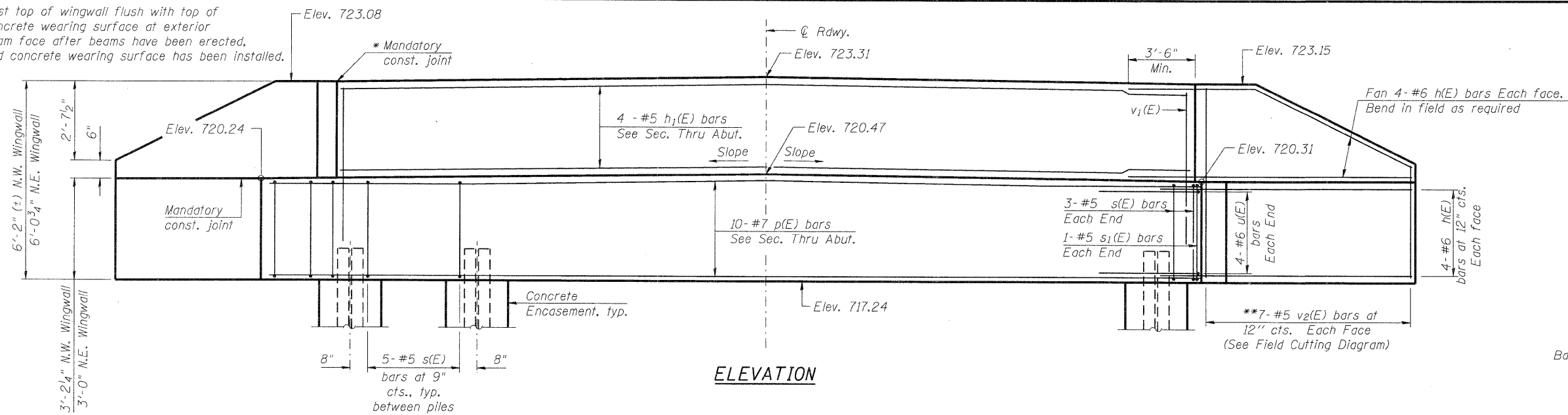
STATE OF ILLINOIS
DEPARTMENT OF TRANSPORTATION

SOUTH ABUTMENT DETAILS
STONERIDGE DRIVE - S.N. 101-6011

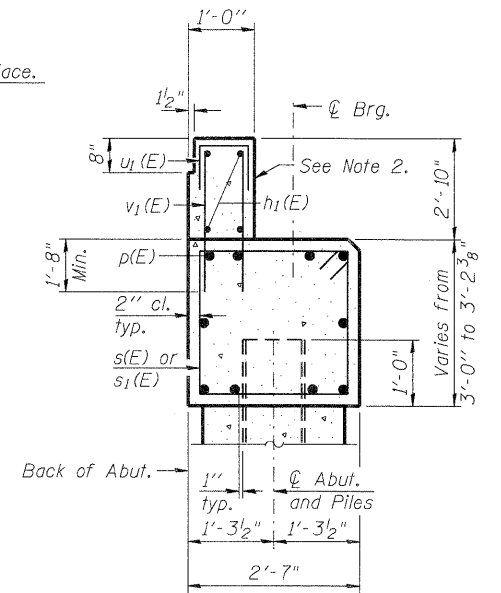
SHEET NO. S-7 OF S-12 SHEETS

F.A. RTE.	SECTION	COUNTY	TOTAL SHEETS	SHEET NO.
	09-00559-00-BR	WINNEBAGO	21	14
CONTRACT NO. 85528			ILLINOIS FED. AID PROJECT	

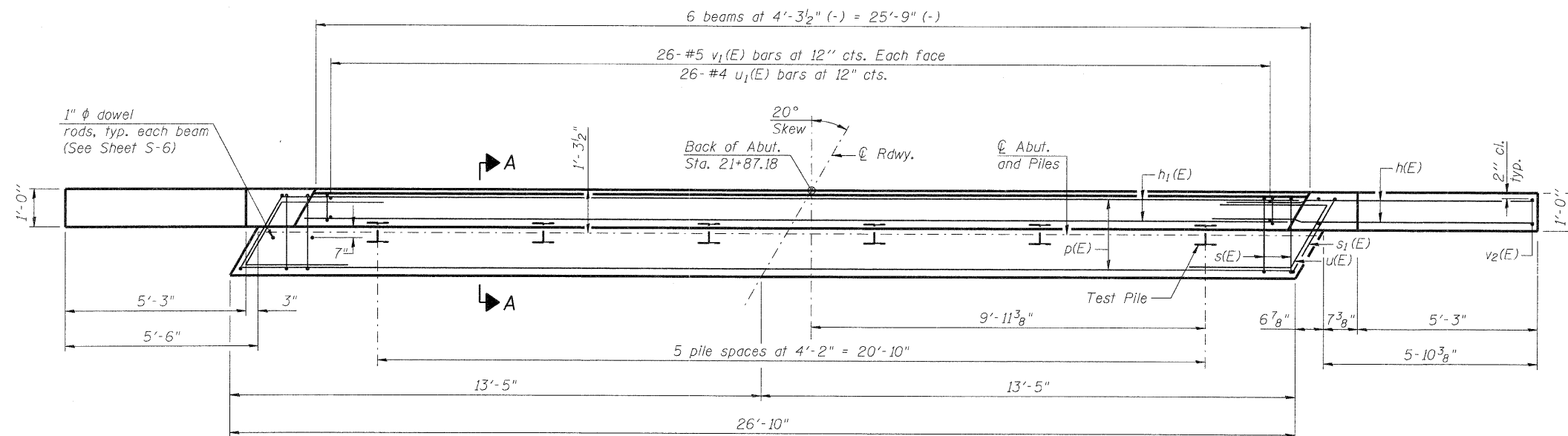
*Cast top of wingwall flush with top of concrete wearing surface at exterior beam face after beams have been erected, and concrete wearing surface has been installed.



ELEVATION



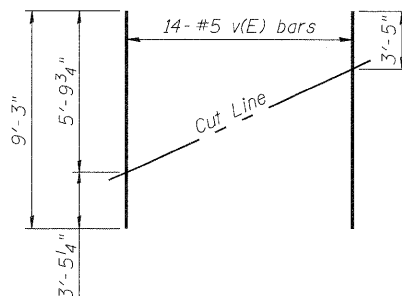
SECTION A-A
(Dimensions are at Rt. L's)



PLAN

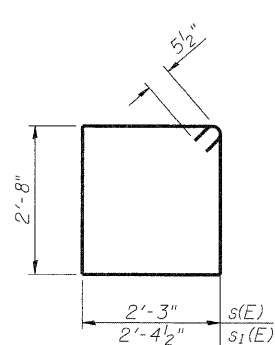
PILE DATA

Type: Steel - HP12x53
 Nominal Required Bearing: 225K
 Factored Resistance Available: 110K
 Est. Length: 60'
 No. Production Piles: 5
 No. Test Piles: 1

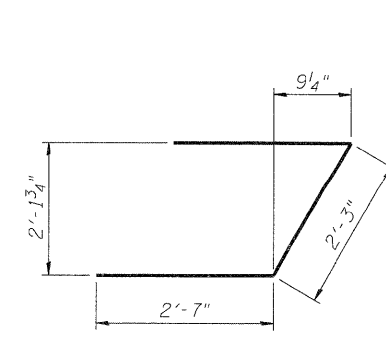


FIELD CUTTING DIAGRAM

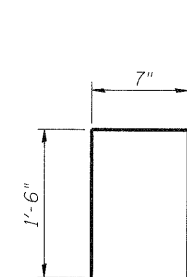
**Order v2(E) full length. Cut as shown and use remainder of bars in opposite face. Trim to fit in N.E. wing wall.



BARS s(E) & s1(E)



BAR u1(E)



BAR u1(E)

BILL OF MATERIAL

Bar	No.	Size	Length	Shape
h(E)	32	#6	10'-6"	—
h1(E)	4	#5	25'-5"	—
p(E)	10	#7	26'-6"	—
s(E)	31	#5	10'-9"	□
s1(E)	2	#5	11'-0"	□
u(E)	8	#6	7'-5"	┘
u1(E)	26	#4	3'-7"	┘
v1(E)	52	#5	4'-6"	—
v2(E)	14	#5	9'-3"	—
Structure Excavation			Cu. Yd.	83.5
Concrete Superstructure			Cu. Yd.	2.8
Concrete Structures			Cu. Yd.	10.7
Reinforcement Bars, Epoxy Coated			Pound	2,050
Furnishing Steel Piles, HP12x53			Foot	300
Driving Piles			Foot	300
Test Pile, Steel HP 12x53			Each	1
Concrete Encasement			Cu. Yd.	3.3

Notes:
 1. For details of piles and Concrete Encasement, see sheet S-10.
 2. Cast backwall after beams and concrete wearing surface have been erected.

COMPANY NAME: SEC GROUP, INC.
 PROJECT CONTACT: Kevin Arff
 CLIENT: City of Rockford
 DATE PLOTTED: 12/16/2010 11:17:39 AM
 FILE NAME: 86100020-abt-02.dgn
 PLOT DRIVER: PdfPlot
 PEN TABLE: Standard-Trans.tbl

SEC Group, Inc.
 An HR Group Company
 420 N. First Street
 Moline, IL 62950-2158
 U.S. 905.1778 • FAX 905.585.1791
 www.secgroupinc.com
 ©2009 SEC Group, Inc. All Rights Reserved.

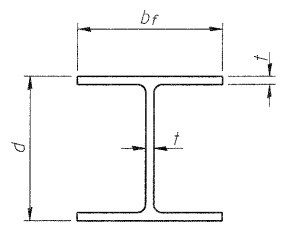
USER NAME = whoad	DESIGNED - JMW	REVISD -
PLOT SCALE = N.T.S.	CHECKED - RGD	REVISD -
PLOT DATE = 12/16/2010	DRAWN - RCB	REVISD -
	CHECKED - 12/16/10	REVISD -

STATE OF ILLINOIS
 DEPARTMENT OF TRANSPORTATION

NORTH ABUTMENT DETAILS
 STONERIDGE DRIVE - S.N. 101-6011

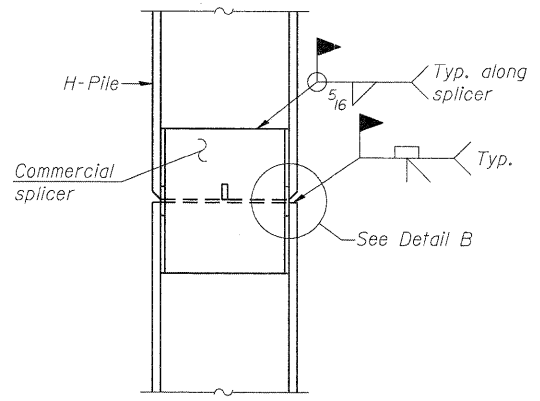
SHEET NO. S-8 OF S-12 SHEETS

F.A. RTE.	SECTION	COUNTY	TOTAL SHEETS	SHEET NO.
	09-00559-00-BR	WINNEBAGO	21	15
CONTRACT NO. 85528			ILLINOIS FED. AID PROJECT	

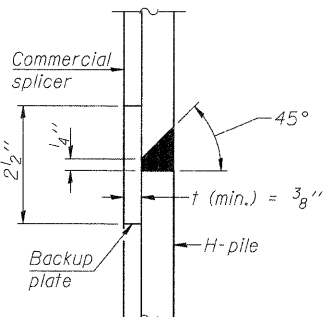


STEEL PILE TABLE

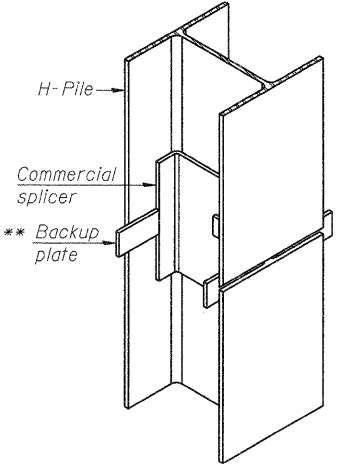
Designation	Depth d	Flange width bf	Web and Flange thickness t	Encasement diameter A
HP 14x117	14 1/4"	14 7/8"	1 5/16"	30"
x102	14"	14 3/4"	1 1/8"	30"
x89	13 7/8"	14 3/4"	5/8"	30"
x73	13 5/8"	14 5/8"	1/2"	30"
HP 12x84	12 1/4"	12 1/4"	1 1/8"	24"
x74	12 1/8"	12 1/4"	5/8"	24"
x63	12"	12 1/8"	1/2"	24"
x53	11 3/4"	12"	7/16"	24"
HP 10x57	10"	10 1/4"	9/16"	24"
x42	9 3/4"	10 1/8"	7/16"	24"
HP 8x36	8"	8 1/8"	7/16"	18"



ELEVATION

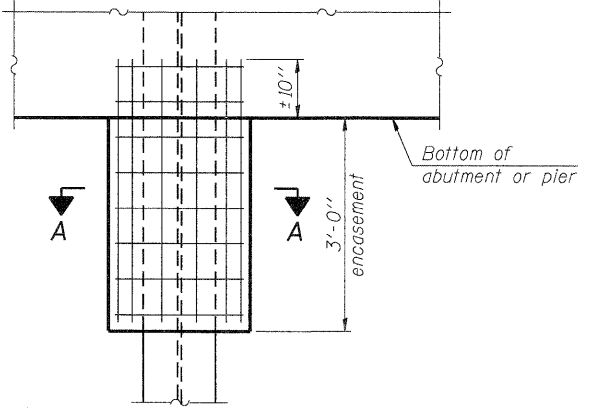


DETAIL "B"



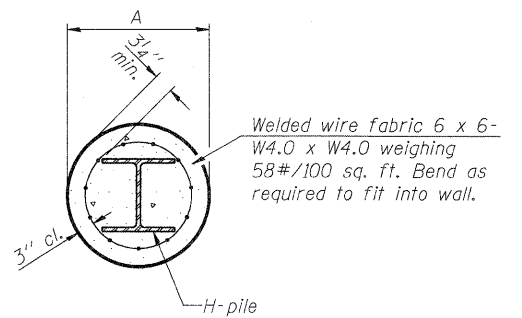
ISOMETRIC VIEW

WELDED COMMERCIAL SPLICE



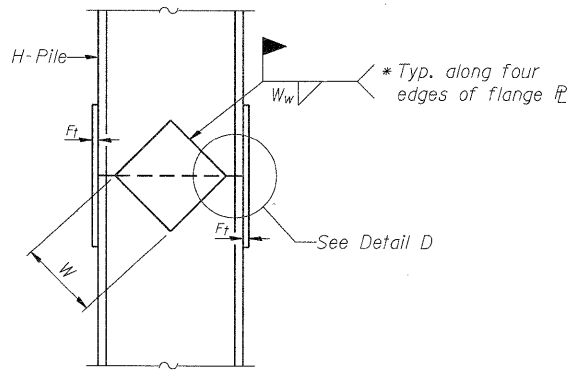
ELEVATION

PILE ENCASEMENT

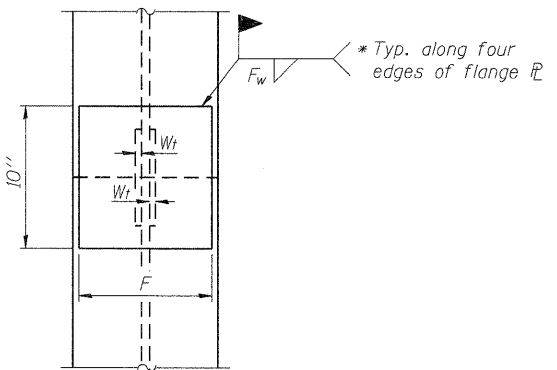


SECTION A-A

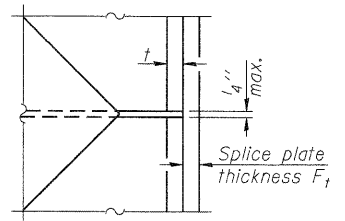
Note:
Forms for encasement may be omitted when soil conditions permit.



ELEVATION



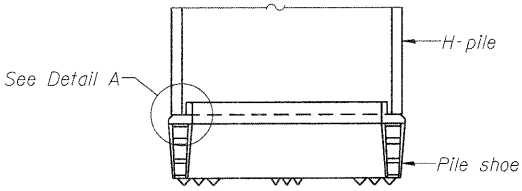
END VIEW



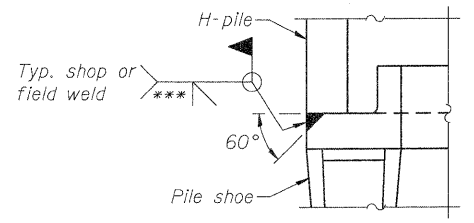
DETAIL D

WELDED PLATE FIELD SPLICE

Designation	F	Ft	Fw	W	Wt	Ww
HP 14x117	12 1/2"	1"	7/8"	7 3/4"	5/8"	1/2"
x102	12 1/2"	7/8"	3/4"	7 3/4"	5/8"	1/2"
x89	12 1/2"	3/4"	1/16"	7 3/4"	5/8"	1/2"
x73	12 1/2"	5/8"	9/16"	7 3/4"	5/8"	1/2"
HP 12x84	10"	7/8"	1/16"	6 1/2"	5/8"	1/2"
x74	10"	7/8"	1/16"	6 1/2"	5/8"	1/2"
x63	10"	5/8"	1/2"	6 1/2"	1/2"	3/8"
x53	10"	5/8"	1/2"	6 1/2"	1/2"	3/8"
HP 10x57	8"	3/4"	9/16"	5 1/4"	1/2"	3/8"
x42	8"	5/8"	9/16"	5 1/4"	1/2"	3/8"
HP 8x36	7"	5/8"	7/16"	4 1/4"	1/2"	3/8"

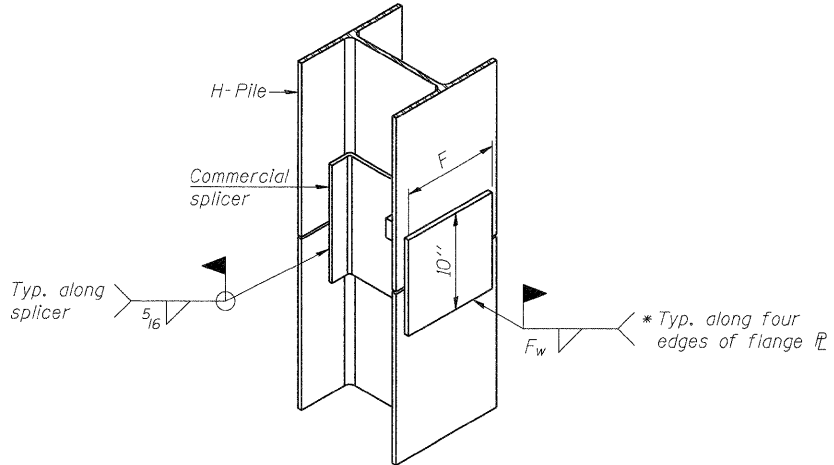


ELEVATION



DETAIL A

H-PILE SHOE ATTACHMENT



ISOMETRIC VIEW

WELDED COMMERCIAL SPLICE ALTERNATE

- * Interrupt welds 1/4" from end of web and/or each flange.
- ** Remove portions of backup plates that extend outside the flanges.
- *** Weld size per pile shoe manufacturer (5/16" min.).

Note:
The steel H-piles shall be according to AASHTO M270 Grade 50.

COMPANY NAME: SEC GROUP, INC.
PROJECT CONTACT: Kevin Arft
CLIENT: City of Rockford
DATE PLOTTED: 12/16/2010 11:17:50 AM
FILE NAME: 86100020-PILE-01.dgn
PLOT DRIVER: PDF-DIT
PEN TABLE: stoner-d-trans.tbl

F-HP 7-1-10

SEC Group, Inc.
An IR Group Company
425 N. First Street
Moline, IL 61201-3185
1-815-396-1718 FAX 815-396-1781
www.secgroupinc.com
200 Henry St., #500, Moline, IL 61201

USER NAME = whood	DESIGNED - JMW	REVISED -
PLOT SCALE = N.T.S.	CHECKED - RGD	REVISED -
PLOT DATE = 12/16/2010	DRAWN - RCB	REVISED -
	CHECKED - 12/16/2010	REVISED -

**STATE OF ILLINOIS
DEPARTMENT OF TRANSPORTATION**

**STEEL PILE DETAILS
STONERIDGE DRIVE - S.N. 101-6011**

SHEET NO. S-10 OF S-12 SHEETS

F.A. RTE.	SECTION	COUNTY	TOTAL SHEETS	SHEET NO.
	09-00559-00-BR	WINNEBAGO	21	17
CONTRACT NO. 85528			ILLINOIS FED. AID PROJECT	

LOG OF BORING NO. B-1										Page 1 of 3	
CLIENT		SEC Group, Inc.		PROJECT						Stoneridge Drive Bridge over Spring Creek	
SITE		Rockford, Illinois		DESCRIPTION							
DEPTH, ft.	USCS SYMBOL	NUMBER	TYPE	RECOVERY, in.	SPT-N BLOWS /ft.	WATER CONTENT, %	DRY UNIT WT pcf	TESTS			
								UNCONFINED STRENGTH, pcf			
0.17											
0.75											
		1	SS	14	8	45					
			HS								
		2	SS	12	7	15					
			HS								
5		3	SS	14	4	16					
			HS								
		4	SS	10	5	17		2000*			
			HS								
10			HS								
		5	SS	7	22/6"	22					
			HS		50/1"						
15			HS								
		6	SS	12	27	13					
			HS								
20			HS								
		7	SS	14	23	11					
			HS								
25			HS								
27.5			HS								

Approx. 2" Asphalt
Approx. 7" Concrete
FILL: SANDY LEAN CLAY AND FINE SAND, TRACE GRAVEL
brown

SANDY LEAN CLAY
gray, medium stiff

MEDIUM TO COARSE SAND WITH GRAVEL AND SILT
reddish brown to brown, medium dense to very dense
gravel seam in Sample 5

COARSE SAND WITH GRAVEL
reddish brown to brown, medium dense

Continued Next Page

WATER LEVEL OBSERVATIONS, ft
WL 14 WD 14 AB

BORING STARTED 3-29-10
BORING COMPLETED 3-29-10
RIG 68 FOREMAN JA
APPROVED EDK JOB # 19105007

LOG OF BORING NO. B-1										Page 2 of 3	
CLIENT		SEC Group, Inc.		PROJECT						Stoneridge Drive Bridge over Spring Creek	
SITE		Rockford, Illinois		DESCRIPTION							
DEPTH, ft.	USCS SYMBOL	NUMBER	TYPE	RECOVERY, in.	SPT-N BLOWS /ft.	WATER CONTENT, %	DRY UNIT WT pcf	TESTS			
								UNCONFINED STRENGTH, pcf			
		8	SS	11	12/6"	14					
			HS		50/5"						
30			HS								
		9	SS	14	19	15					
			HS								
35			HS								
		10	SS	13	20	16					
			HS								
40			HS								
		11	SS	16	27	21					
			HS								
45			HS								
		12	SS	16	33	21					
			HS								
50			HS								
		13	SS	12	21	23		9000*			
			HS								
55			HS								

FINE TO MEDIUM SAND, TRACE GRAVEL
brown, medium dense to very dense
gravel seam in Sample 8

CLAYEY SILT
gray, medium dense to dense

SILTY CLAY
gray, very stiff to hard

Continued Next Page

WATER LEVEL OBSERVATIONS, ft
WL 14 WD 14 AB

BORING STARTED 3-29-10
BORING COMPLETED 3-29-10
RIG 68 FOREMAN JA
APPROVED EDK JOB # 19105007

LOG OF BORING NO. B-1										Page 3 of 3	
CLIENT		SEC Group, Inc.		PROJECT						Stoneridge Drive Bridge over Spring Creek	
SITE		Rockford, Illinois		DESCRIPTION							
DEPTH, ft.	USCS SYMBOL	NUMBER	TYPE	RECOVERY, in.	SPT-N BLOWS /ft.	WATER CONTENT, %	DRY UNIT WT pcf	TESTS			
								UNCONFINED STRENGTH, pcf			
60											
		14	SS	16	22	24		9000*			
			HS								
65			HS								
		15	SS	12	14	17					
			HS								
70			HS								
		16	SS	10	16	19					
			HS								
75			HS								
		17	SS	12	20	19					
			HS								
75			HS								

continuation

SILTY CLAY
gray, very stiff to hard

FINE SAND
gray, medium dense

BOTTOM OF BORING

WATER LEVEL OBSERVATIONS, ft
WL 14 WD 14 AB

BORING STARTED 3-29-10
BORING COMPLETED 3-29-10
RIG 68 FOREMAN JA
APPROVED EDK JOB # 19105007

SEC GROUP, INC.
PROJECT CONTACT: Kevin Arft
CLIENT: City of Rockford
DATE PLOTTED: 12/16/2010 11:58 AM
FILE NAME: 86100020-sb-cl.dgn
PLOT DRIVER: pldr.plt
PEN TABLE: standard-trans.tbl

<p>SEC Group, Inc. 1400 N. First Street Rockford, IL 61102-1138 1-815-395-1778 F 815-395-1781 www.secgroupinc.com</p>	USER NAME = whood DESIGNED - JMW CHECKED - RGD DRAWN - RCB CHECKED - 12/16/10 REVISED - REVISED - REVISED - REVISED -	STATE OF ILLINOIS DEPARTMENT OF TRANSPORTATION	SOIL BORING LOGS STONERIDGE DRIVE - S.N. 101-6011 SHEET NO. S-11 OF S-12 SHEETS	F.A. RTE. SECTION COUNTY TOTAL SHEETS SHEET NO. CONTRACT NO. 85528 ILLINOIS FED. AID PROJECT
	PLOT SCALE = N.T.S. PLOT DATE = 12/16/2010	APPROVED EDK JOB # 19105007	WINNEBAGO 21 18	18

LOG OF BORING NO. B-2									
CLIENT		PROJECT							
SITE		STONERIDGE DRIVE BRIDGE OVER SPRING CREEK							
DESCRIPTION		DEPTH, ft.	USCS SYMBOL NUMBER	TYPE	RECOVERY, in.	SPT - N BLOWS /ft.	WATER CONTENT, %	DRY UNIT WT pcf	UNCONFINED STRENGTH, psf
Approx. 3" Asphalt Approx. 6" Concrete FINE TO MEDIUM SAND brown, loose to medium dense		0.25 0.75	SP 1	SS	10	13	5		
			HS						
			SP 2	SS	12	5	6		
			HS						
		5	SP 3	SS	10	7	5		
			HS						
MEDIUM TO COARSE SAND WITH GRAVEL brown, medium dense			SP 4	SS	13	18	11		
			HS						
Sample 5: No recovery from split-spoon sampler. An auger sample was obtained.			SP 5	AS	NR	11	10		
			HS						
MEDIUM TO COARSE SAND WITH GRAVEL AND SILT reddish brown to brown, medium dense		15	SP 6	SS	12	16	14		
			HS						
		20	SP 7	SS	13	18	16		
			HS						
		25							

Continued Next Page

The stratification lines represent the approximate boundary lines between soil and rock types. In-situ, the transition may be gradual. *Calibrated Hand Penetrometer **140 Lbs Automatic SPT Hammer

WATER LEVEL OBSERVATIONS, ft.		BORING STARTED 3-29-10	
WL 14	WD 14	BORING COMPLETED 3-29-10	
EXHIBIT A-4		RIG 68 FOREMAN JA	
APPROVED		EDK JOB # 19105007	

LOG OF BORING NO. B-2									
CLIENT		PROJECT							
SITE		STONERIDGE DRIVE BRIDGE OVER SPRING CREEK							
DESCRIPTION		DEPTH, ft.	USCS SYMBOL NUMBER	TYPE	RECOVERY, in.	SPT - N BLOWS /ft.	WATER CONTENT, %	DRY UNIT WT pcf	UNCONFINED STRENGTH, psf
COARSE SAND WITH GRAVEL reddish brown to brown, medium dense		28.5	SP 8	SS	12	27	13		
		30	HS						
			SP 9	SS	10	27	11		
			HS						
		35							
CLAYEY SILT gray, dense		38.5	ML-CL 10	SS	12	36	22		
		40	HS						
			CL-ML 11	SS	14	38	20	8000*	
SILTY CLAY gray, very stiff to hard		43.5							
		45	HS						
			CL-ML 12	SS	12	21	21	6000*	
		50	HS						
			CL-ML 13	SS	13	22	23	7000*	
		55							

Continued Next Page

The stratification lines represent the approximate boundary lines between soil and rock types. In-situ, the transition may be gradual. *Calibrated Hand Penetrometer **140 Lbs Automatic SPT Hammer

WATER LEVEL OBSERVATIONS, ft.		BORING STARTED 3-29-10	
WL 14	WD 14	BORING COMPLETED 3-29-10	
EXHIBIT A-4		RIG 68 FOREMAN JA	
APPROVED		EDK JOB # 19105007	

LOG OF BORING NO. B-2									
CLIENT		PROJECT							
SITE		STONERIDGE DRIVE BRIDGE OVER SPRING CREEK							
DESCRIPTION		DEPTH, ft.	USCS SYMBOL NUMBER	TYPE	RECOVERY, in.	SPT - N BLOWS /ft.	WATER CONTENT, %	DRY UNIT WT pcf	UNCONFINED STRENGTH, psf
continuation									
SILTY CLAY gray, very stiff to hard			CL-ML 14	SS	16	27	23	8000*	
		60	HS						
			SP 15	SS	10	26	21		
FINE SAND gray, medium dense		63.5							
		65	HS						
			SP 16	SS	12	25	20		
		70	HS						
			SP 17	SS	12	23	19		
BOTTOM OF BORING		75							

The stratification lines represent the approximate boundary lines between soil and rock types. In-situ, the transition may be gradual. *Calibrated Hand Penetrometer **140 Lbs Automatic SPT Hammer

WATER LEVEL OBSERVATIONS, ft.		BORING STARTED 3-29-10	
WL 14	WD 14	BORING COMPLETED 3-29-10	
EXHIBIT A-4		RIG 68 FOREMAN JA	
APPROVED		EDK JOB # 19105007	

COMPANY NAME: SEC GROUP, INC.
 PROJECT CONTACT: Kevin A. Hoff
 CLIENT: City of Rockford
 DATE PLOTTED: 12/16/2010 11:18:03 AM
 FILE NAME: 86100020-sb1-02.dgn
 PLOT DRIVER: PLOT.PLT
 PEA TABLE: s:\standard-trans.tbl

SEC Group, Inc.
 An ISO 9001 Certified Company
 420 N. First Street
 Rockford, IL 61103-0118
 T 815.395.1779 F 815.395.1781
 www.secgroupinc.com
 *McHenry, IL *Rockford, IL *New Lenox, IL *Chicago, IL

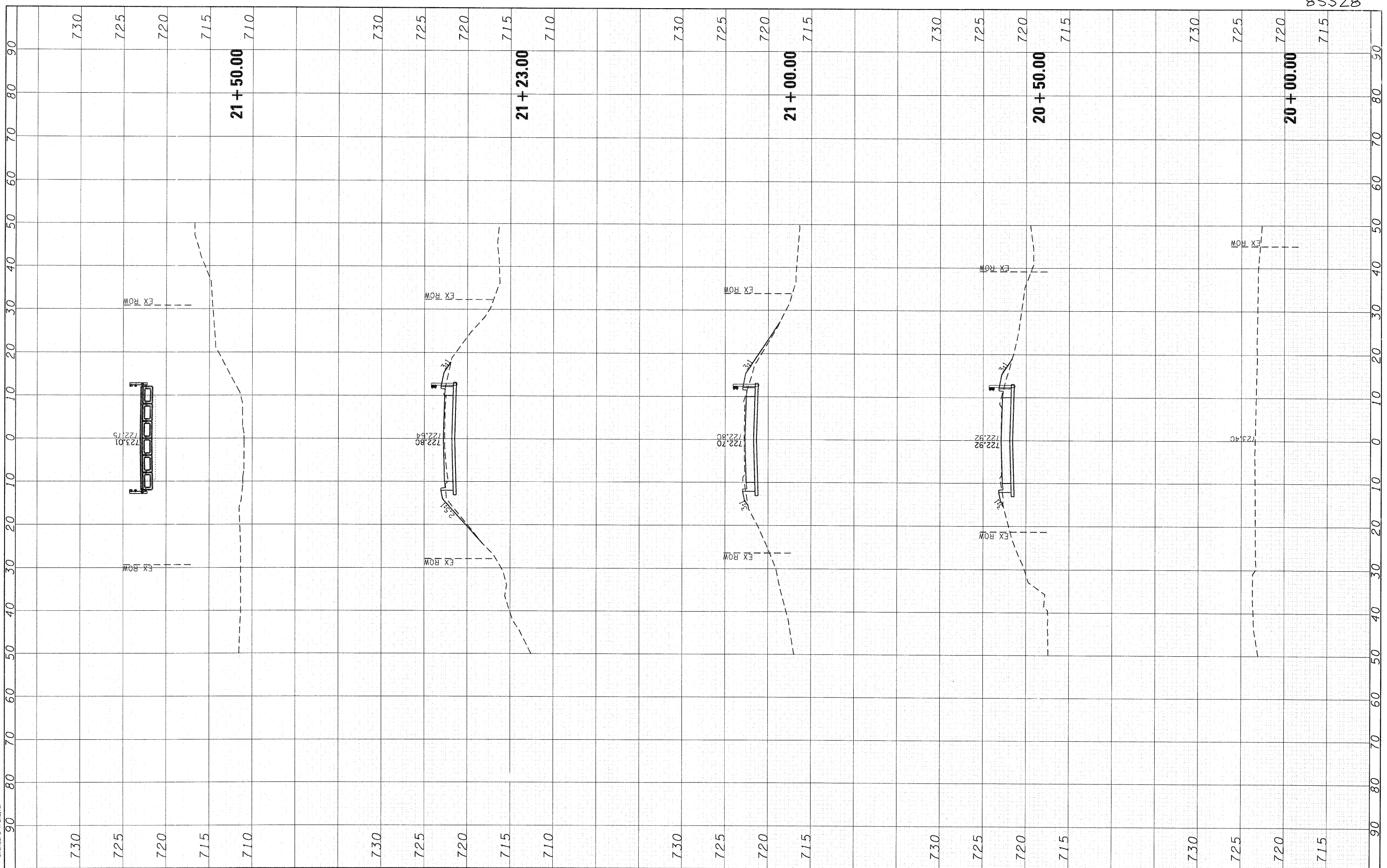
USER NAME = whood	DESIGNED - JMW	REVISED -
PLOT SCALE = N.T.S.	CHECKED - RGD	REVISED -
PLOT DATE = 12/16/2010	DRAWN - RCB	REVISED -
	CHECKED - 12/16/10	REVISED -

**STATE OF ILLINOIS
 DEPARTMENT OF TRANSPORTATION**

**SOIL BORING LOGS
 STONERIDGE DRIVE - S.N. 101-6011**

F.A. RTE.	SECTION	COUNTY	TOTAL SHEETS	SHEET NO.
	09-00559-00-BR	WINNEBAGO	21	19
CONTRACT NO. 85528			ILLINOIS FED. AID PROJECT	

COMPANY NAME: SEC GROUP, INC.
PROJECT CONTACT: Kevin Pratt
CLIENT: City of Rockford
DATE PLOTTED: 12/16/2010 11:50:06 AM
FILE NAME: 86100020-xs.dgn
PLOT DRIVER: PDF.plt
PEN TABLE: srfanord-trans.tbl



SEC Group, Inc.
 2111150000 Company
 420 N. Front Street
 Moline, IL 61201-2138
 T. 314.355.1779 F. 314.355.1781
 www.secgroupinc.com
 *Moline, IL *Rockford, IL *New Leno, IL *Chicago, IL

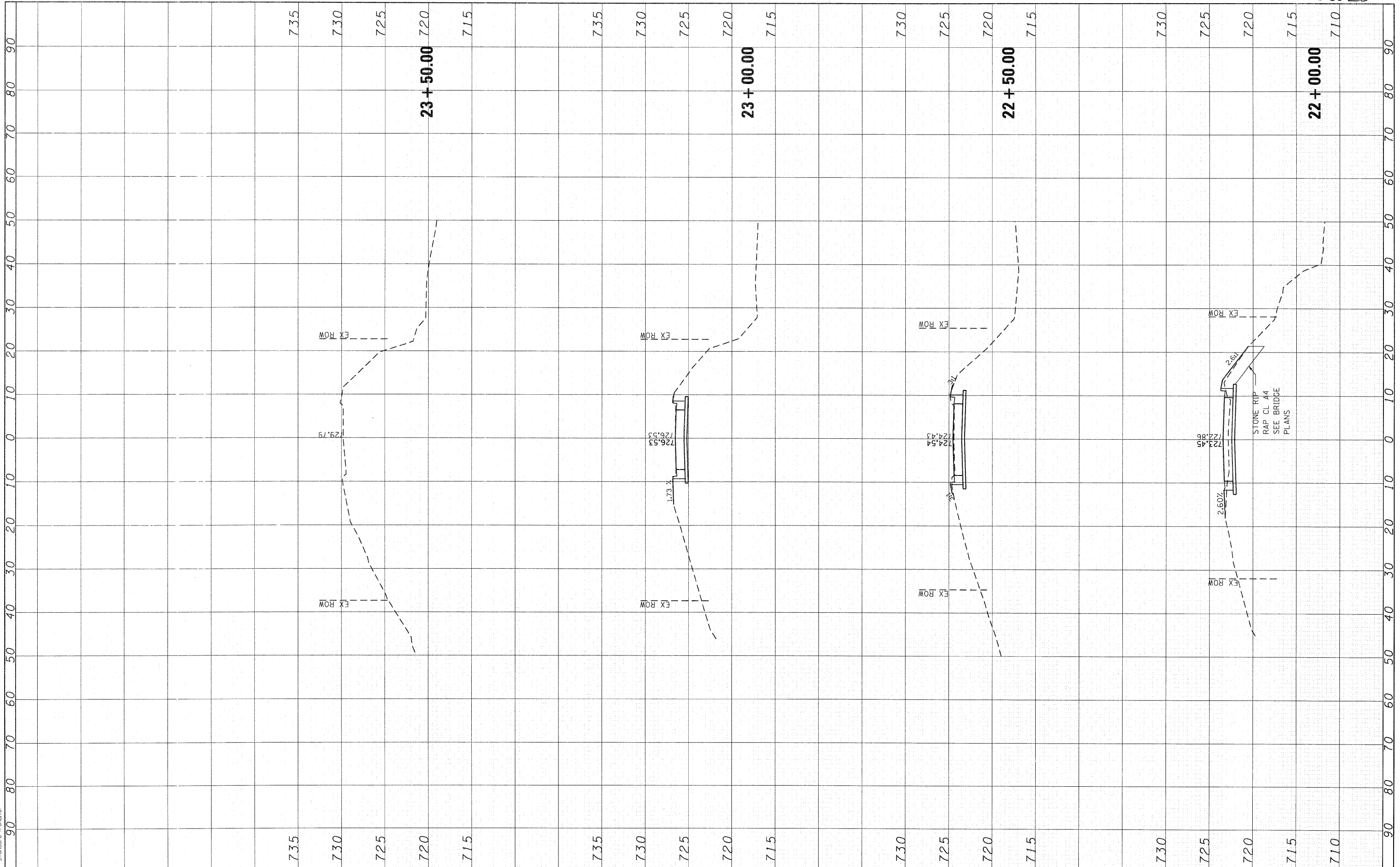
USER NAME = whoad	DESIGNED - JMW	REVISED -
FILE NAME 86100020-xs.dgn	DRAWN - RCB	REVISED -
PLOT SCALE =	CHECKED - RGD	REVISED -
PLOT DATE = 12/16/2010	DATE - 12/16/10	REVISED -

CITY OF ROCKFORD

**STONERIDGE DRIVE OVER SPRING CREEK
CROSS SECTIONS**

SCALE: 10H:5V SHEET NO. 1 OF 2 SHEETS STA. 20+00.00 TO STA. 21+50.00

F.A. RTE.	SECTION	COUNTY	TOTAL SHEETS	SHEET NO.
	09-00559-00-BR	Winnebago	21	20
CONTRACT NO. 85528				
FED. ROAD DIST. NO. 2 [ILLINOIS] FED. AID PROJECT				



COMPANY NAME: SEC GROUP, INC.
 PROJECT CONTACT: Kevin J. ...
 DATE PLOTTED: 12/16/2010 10:40 AM
 FILE NAME: 86100020-ss.dgn
 PLOT DRIVER: pdf.plt
 PEN TABLE: standard-trans.tbl



USER NAME = whood	DESIGNED - JMW	REVISED -
FILE NAME = 86100020-ss.dgn	DRAWN - RCB	REVISED -
PLOT SCALE =	CHECKED - RGD	REVISED -
PLOT DATE = 12/16/2010	DATE - 12/16/10	REVISED -

CITY OF ROCKFORD

**STONERIDGE DRIVE OVER SPRING CREEK
 CROSS SECTIONS**

SCALE: 10H:5V SHEET NO. 2 OF 2 SHEETS STA. 22+00.00 TO STA. 23+50.00

F.A. RTE.	SECTION	COUNTY	TOTAL SHEETS	SHEET NO.
	09-00559-00-BR	Winnebago	21	21
CONTRACT NO. 85528			FED. ROAD DIST. NO. 2 ILLINOIS FED. AID PROJECT	