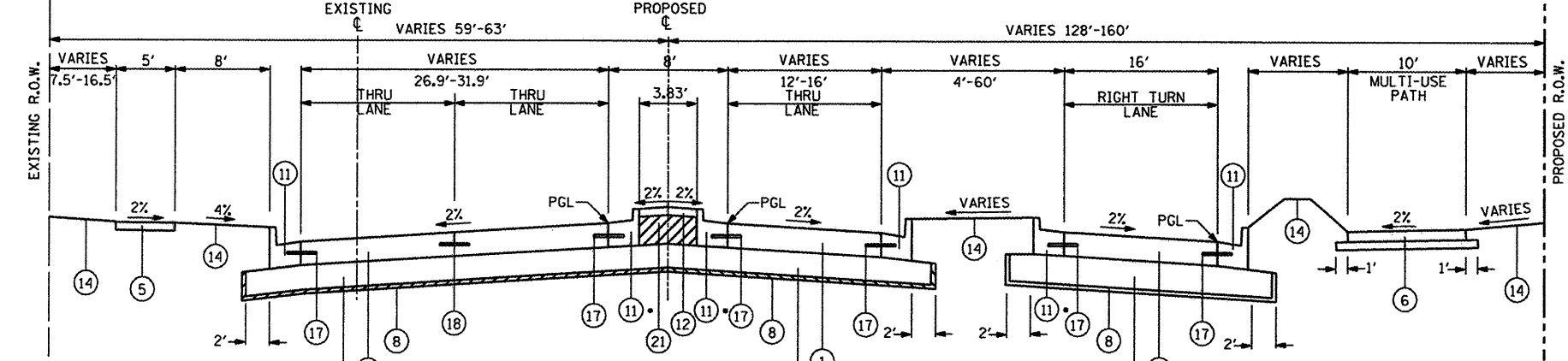


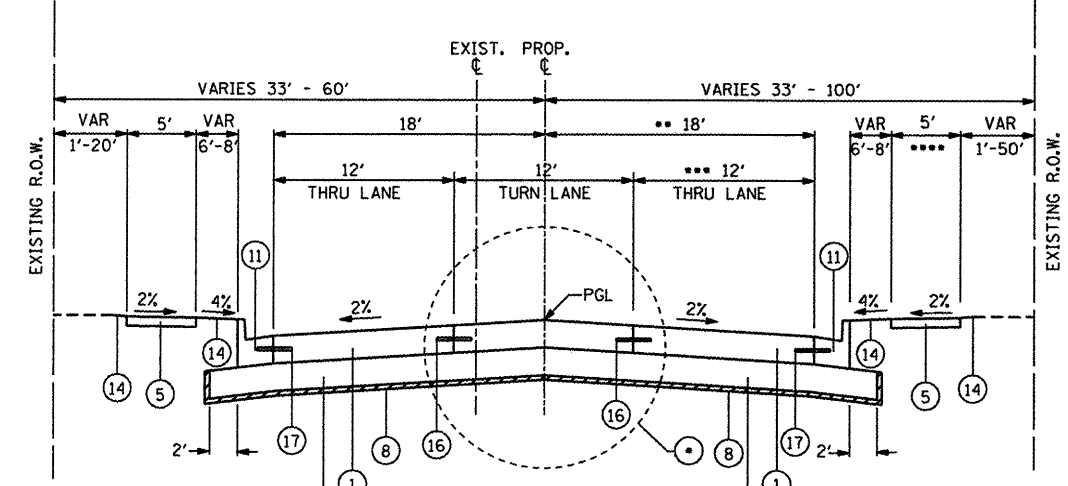
PROPOSED COLLEGE AVENUE
 STA. 52+63.50 TO STA. 57+90.00

- WIDTH VARIES (24'-26.9') STA. 55+83.00 TO STA. 57+90.00
- WIDTH VARIES (24'-32.3') STA. 56+49 TO STA. 57+90.00
- TAPERS 1.5'-8' (LT) STA. 52+63.50 TO STA. 53+59.50
- VARIES 3.8'-8' STA. 57+17.00 TO STA. 57+90.00
- SLOPED CONCRETE END TREATMENT: RT STA. 52+66.00 TO STA. 53+63.00
 LT STA. 52+61.00 TO STA. 53+21.00
- PITCH OF SIDEWALK/PATH TRANSITIONS FROM 2% AWAY FROM THE ROADWAY TO 2% TOWARDS THE ROADWAY: RT STA. 57+50.00 TO STA. 57+75.00
 LT STA. 53+21.00 TO STA. 53+56.00



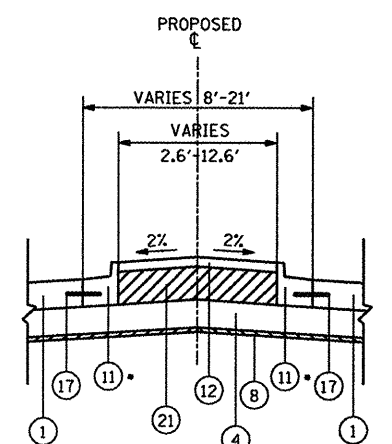
PROPOSED COLLEGE AVENUE
 STA. 57+90.00 TO STA. 59+43.31
 (SEMINARY STREET INTERSECTION OMISSION STA. 59+43.31 TO 60+71.52)

- REVERSE GUTTER FLAG SLOPE AT 2.0%

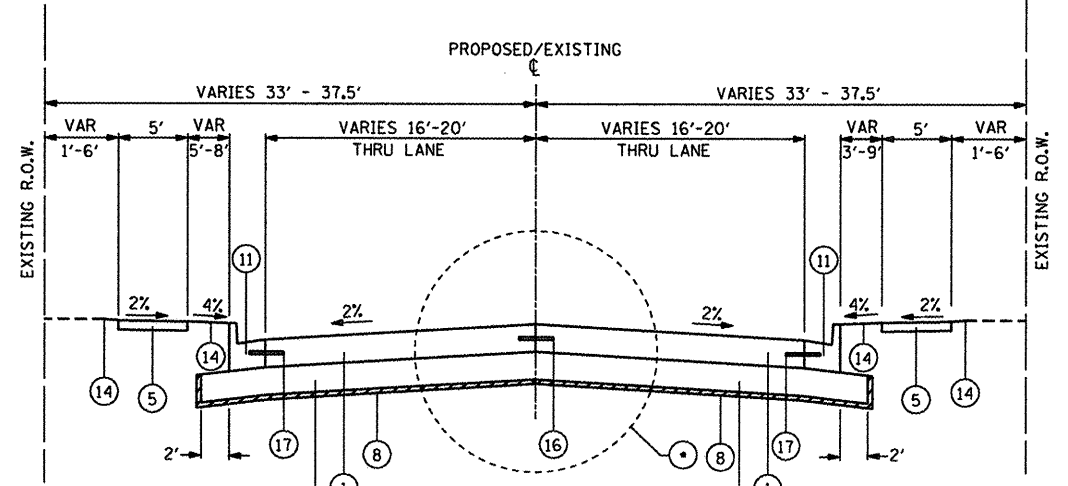


PROPOSED COLLEGE AVENUE
 STA. 60+71.52 TO STA. 68+53.26

- PROPOSED SPLITTER ISLAND STA. 60+71.52 TO STA. 62+40.00
- VARIES 20.8'-35' (STA. 60+71.52 TO STA. 62+68.46)
- VARIES 14.8'-29' (STA. 60+71.52 TO STA. 62+68.46)
- 10' MULTI-USE PATH (STA. 60+71.52 TO STA. 62+95.09)



PROPOSED SPLITTER ISLAND
 • REVERSE GUTTER FLAG SLOPE AT 2.0%

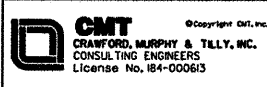


PROPOSED SEMINARY STREET
 STA. 0+60.42 TO STA. 3+31.17
 STA. 10+54.24 TO STA. 13+91.98

- PROPOSED SPLITTER ISLAND (STA. 1+62.00 TO STA. 3+31.17)
 (STA. 10+54.24 TO STA. 12+73.00)

- PROPOSED LEGEND**
- PORTLAND CEMENT CONCRETE PAVEMENT 8" (JOINTED)
 - PORTLAND CEMENT CONCRETE DRIVEWAY PAVEMENT 6 INCH (RESIDENTIAL DRIVEWAY)
 - PORTLAND CEMENT CONCRETE DRIVEWAY PAVEMENT 8 INCH (COMMERCIAL DRIVEWAY)
 - SUB-BASE GRANULAR MATERIAL, TYPE B, 12"
 - PORTLAND CEMENT CONCRETE SIDEWALK 4 INCH
 - PORTLAND CEMENT CONCRETE SIDEWALK, 5" AGGREGATE BASE COURSE, TYPE B, 4"
 - AGGREGATE BASE COURSE, TYPE B, 6"
 - GEOTECHNICAL FABRIC FOR GROUND STABILIZATION
 - CONCRETE GUTTER TYPE A (SPECIAL)
 - CORRUGATED MEDIAN (DOWELLED)
 - COMBINATION CONCRETE CURB & GUTTER, TYPE B-6.18
 - STAMPED COLORED PCC MEDIAN SURFACE 4 INCH, SPECIAL
 - SEEDING, CLASS 2A
 - FURNISHING AND PLACING TOPSOIL, 4"
 - MECHANICALLY STABILIZED EARTH RETAINING WALL
 - LONGITUDINAL CONSTRUCTION JOINT
 GROUDED TIE BAR
 NO. 6 X 30" LONG DEFORMED TIE (EPOXY COATED)
 AT 2' C-C. (INCLUDED IN COST OF PCC PAVEMENT)
 - NO. 6 X 30" TIE BARS (EPOXY COATED)
 AT 2' C-C. (INCLUDED IN COST OF CC&G)
 - LONGITUDINAL SAWED JOINT
 NO. 6 X 30" LONG DEFORMED TIE (EPOXY COATED)
 AT 2' C-C. (INCLUDED IN COST OF PCC PAVEMENT)
 - SLOPED CONCRETE BARRIER END TREATMENT (PAID AS 50300225)
 - BARRIER MOMENT SLAB, 8"
 (PAID AS 50300225, SEE SHEET 109 FOR DETAILS)
 AGGREGATE BASE COURSE, TYPE B, 4"
 - AGGREGATE BASE COURSE, TYPE B

L:\PROJECTS\0826882\Drawings\Road\Sheets\A\TYP_PROP_02.dwg



USER NAME = Steve Prange
 DESIGNED - SJP / MNB
 DRAWN - ERD
 PLOT SCALE = 40.0000" / IN.
 PLOT DATE = 02/04/11

REVISD -
 REVISD -
 REVISD -
 REVISD -

**CITY OF ROCKFORD
 MORGAN STREET BRIDGE**

PROPOSED TYPICAL SECTION

SCALE: NTS SHEET NO. 4 OF 5 SHEETS STA. N/A TO STA. N/A

F.A. RTE.	SECTION	COUNTY	TOTAL SHEETS	SHEET NO.
5077	99-00493-00-BR	WINNEBAGO	253	14
CONTRACT NO. 85529				
FED. ROAD DIST. NO. 2 [ILLINOIS] FED. AID PROJECT BRM-509965				