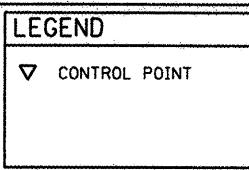
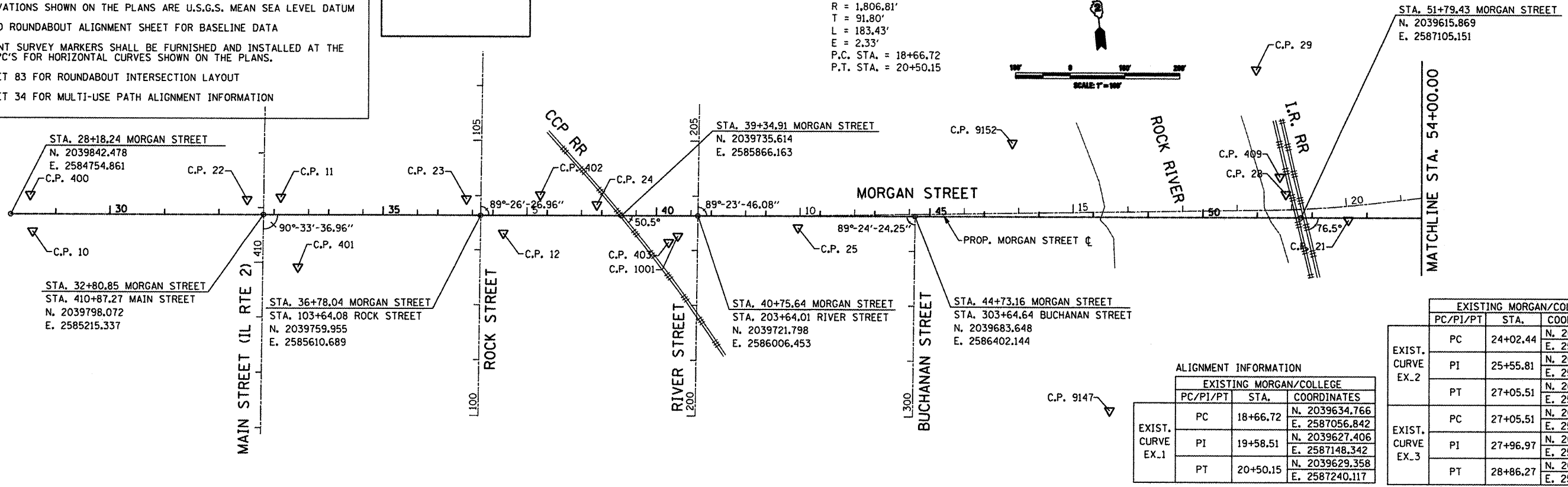
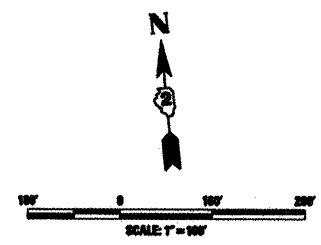


- NOTES**
1. ALL STATION AND OFFSET REFERENCES ARE TO THE ROADWAY CENTERLINE UNLESS OTHERWISE NOTED, THE STATE PLANE COORDINATE SYSTEM HAS BEEN USED FOR THE HORIZONTAL CONTROL
 2. ALL ELEVATIONS SHOWN ON THE PLANS ARE U.S.G.S. MEAN SEA LEVEL DATUM
 3. REFER TO ROUNDABOUT ALIGNMENT SHEET FOR BASELINE DATA
 4. PERMANENT SURVEY MARKERS SHALL BE FURNISHED AND INSTALLED AT THE PT'S & PC'S FOR HORIZONTAL CURVES SHOWN ON THE PLANS.
 5. SEE SHEET 83 FOR ROUNDABOUT INTERSECTION LAYOUT
 6. SEE SHEET 34 FOR MULTI-USE PATH ALIGNMENT INFORMATION



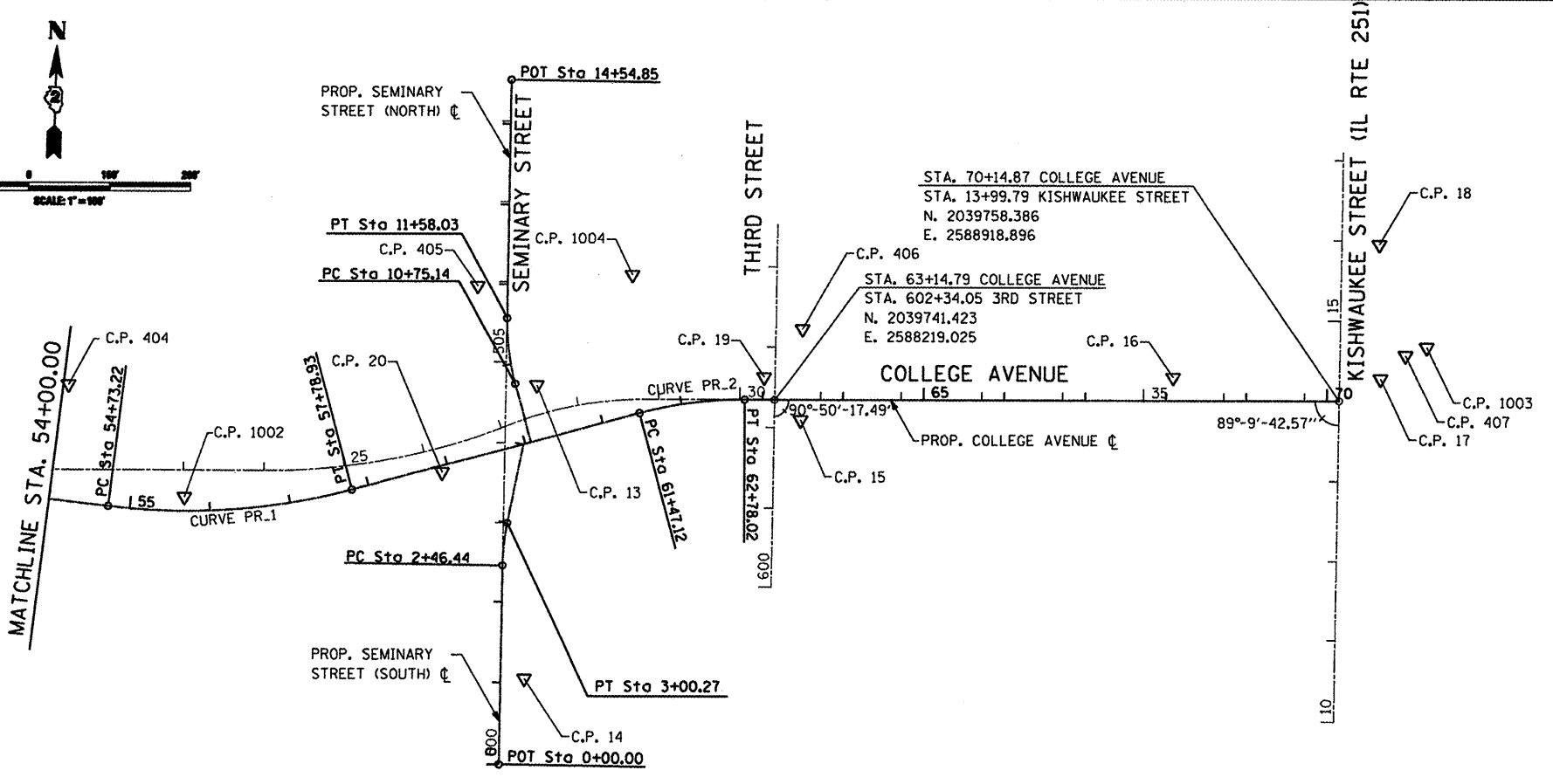
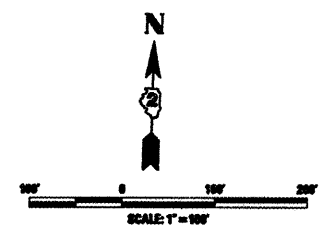
EXIST. \curvearrowright CURVE EX.1
 PI STA. = 19+58.51
 Δ = 5° 49' 01" (LT)
 D = 3° 10' 16"
 R = 1,806.81'
 T = 91.80'
 L = 183.43'
 E = 2.33'
 P.C. STA. = 18+66.72
 P.T. STA. = 20+50.15



ALIGNMENT INFORMATION

EXISTING MORGAN/COLLEGE		
PC/PI/PT	STA.	COORDINATES
EXIST. CURVE EX.1	PC	18+66.72 N. 2039634.766 E. 2587056.842
	PI	19+58.51 N. 2039627.406 E. 2587148.342
	PT	20+50.15 N. 2039629.358 E. 2587240.117

EXISTING MORGAN/COLLEGE			
	PC/PI/PT	STA.	COORDINATES
EXIST. CURVE EX.2	PC	24+02.44	N. 2039636.847 E. 2587592.326
	PI	25+55.81	N. 2039640.108 E. 2587745.667
	PT	27+05.51	N. 2039699.850 E. 2587886.929
EXIST. CURVE EX.3	PC	27+05.51	N. 2039699.850 E. 2587886.929
	PI	27+96.97	N. 2039735.474 E. 2587971.165
	PT	28+86.27	N. 2039737.678 E. 2588062.598



ALIGNMENT INFORMATION

PROPOSED MORGAN/COLLEGE		
PC/PI/PT	STA.	COORDINATES
PROP. CURVE PR.1	PC	54+73.22 N. 2039587.675 E. 2587397.586
	PI	56+27.97 N. 2039572.824 E. 2587551.617
	PT	57+78.93 N. 2039616.484 E. 2587700.075
PROP. CURVE PR.2	PC	61+47.12 N. 2039720.365 E. 2588053.300
	PI	62+12.94 N. 2039738.937 E. 2588116.451
	PT	62+78.02 N. 2039740.532 E. 2588182.257

PROPOSED SEMINARY ST.			
	PC/PI/PT	STA.	COORDINATES
PROP. CURVE PR_SEM SOUTH	PC	2+46.44	N. 2039526.318 E. 2587888.338
	PI	2+73.43	N. 2039553.308 E. 2587888.072
	PT	3+00.27	N. 2039579.897 E. 2587892.709
PROP. CURVE PR_SEM NORTH	PC	10+75.14	N. 2039752.917 E. 2587897.679
	PI	11+16.86	N. 2039792.885 E. 2587885.717
	PT	11+58.03	N. 2039834.603 E. 2587885.307

PROP. \curvearrowright CURVE PR.1
 PI STA. = 56+27.97
 Δ = 21° 53' 43" (LT)
 D = 7° 09' 43"
 R = 800.00'
 T = 154.75'
 L = 305.71'
 E = 14.83'
 P.C. STA. = 54+73.22
 P.T. STA. = 57+78.93

PROP. \curvearrowright CURVE PR.2
 PI STA. = 62+12.94
 Δ = 14° 59' 59" (RT)
 D = 11° 27' 33"
 R = 500.00'
 T = 65.83'
 L = 130.90'
 E = 4.31'
 P.C. STA. = 61+47.12
 P.T. STA. = 62+78.02

EXIST. \curvearrowright CURVE EX.2
 PI STA. = 25+55.81
 Δ = 21° 42' 22" (LT)
 D = 7° 09' 43"
 R = 800.00'
 T = 153.38'
 L = 303.07'
 E = 14.57'
 P.C. STA. = 24+02.44
 P.T. STA. = 27+05.51

PROP. \curvearrowright CURVE PR_SEM_NORTH
 PI STA. = 11+16.86
 Δ = 16° 05' 57" (RT)
 D = 19° 25' 20"
 R = 295.00'
 T = 41.72'
 L = 82.89'
 E = 2.94'
 P.C. STA. = 10+75.14
 P.T. STA. = 11+58.03

PROP. \curvearrowright CURVE PR_SEM_SOUTH
 PI STA. = 2+73.43
 Δ = 10° 27' 19" (RT)
 D = 19° 25' 20"
 R = 295.00'
 T = 26.99'
 L = 53.83'
 E = 1.23'
 P.C. STA. = 2+46.44
 P.T. STA. = 3+00.27

EXIST. \curvearrowright CURVE EX.3
 PI STA. = 27+96.97
 Δ = 21° 32' 38" (RT)
 D = 11° 55' 07"
 R = 480.73'
 T = 91.46'
 L = 180.76'
 E = 8.62'
 P.C. STA. = 27+05.51
 P.T. STA. = 28+86.27



USER NAME = Steve Prange	DESIGNED - SJP / MNB	REVISED -
PLOT SCALE = 200.0000 / IN.	DRAWN - ERD	REVISED -
PLOT DATE = 02/04/11	CHECKED - SJP	REVISED -
	DATE - 02/04/2011	REVISED -

**CITY OF ROCKFORD
MORGAN STREET BRIDGE**

ALIGNMENT, TIES AND BENCHMARKS

SCALE: NTS	SHEET NO. 1 OF 4 SHEETS	STA. N/A TO STA. N/A
------------	-------------------------	----------------------

F.A. RTE.	SECTION	COUNTY	TOTAL SHEETS	SHEET NO.
5077	99-00493-00-BR	WINNEBAGO	253	22

CONTRACT NO. 85529
 FED. ROAD DIST. NO. 2 (ILLINOIS) FED. AID PROJECT BRW-50991651