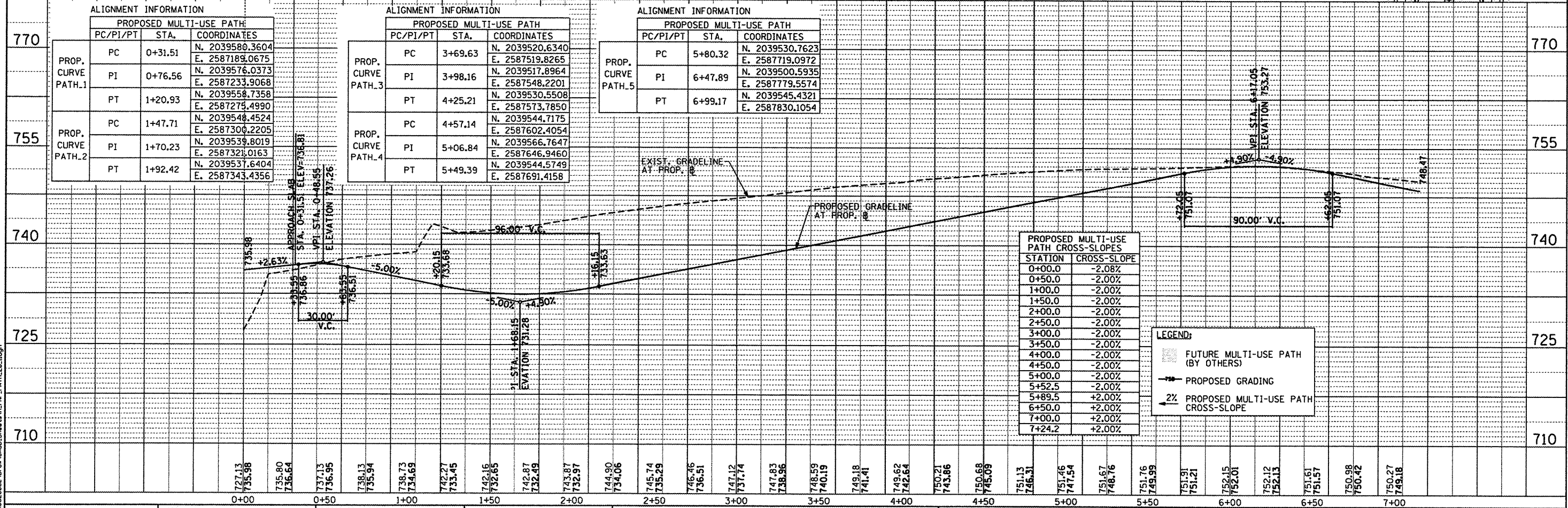
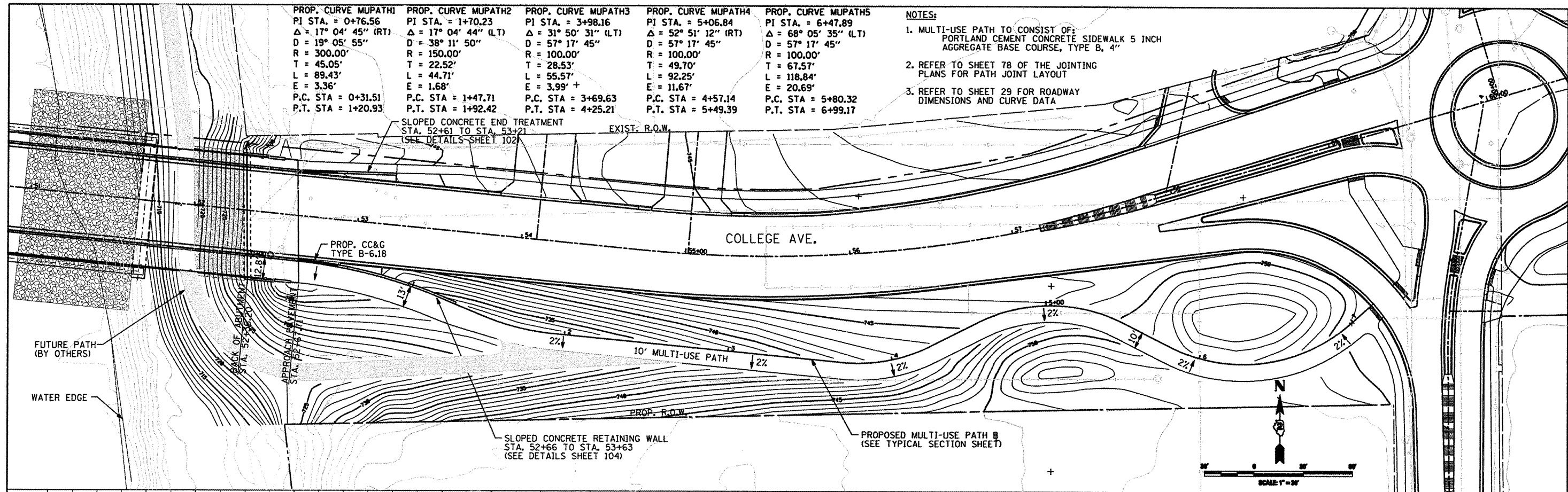


PROP. CURVE MUPATH1	PROP. CURVE MUPATH2	PROP. CURVE MUPATH3	PROP. CURVE MUPATH4	PROP. CURVE MUPATH5
PI STA. = 0+76.56	PI STA. = 1+70.23	PI STA. = 3+98.16	PI STA. = 5+06.84	PI STA. = 6+47.89
Δ = 17° 04' 45" (RT)	Δ = 17° 04' 44" (LT)	Δ = 31° 50' 31" (LT)	Δ = 52° 51' 12" (RT)	Δ = 68° 05' 35" (LT)
D = 19° 05' 55"	D = 38° 11' 50"	D = 57° 17' 45"	D = 57° 17' 45"	D = 57° 17' 45"
R = 300.00'	R = 150.00'	R = 100.00'	R = 100.00'	R = 100.00'
T = 45.05'	T = 22.52'	T = 28.53'	T = 49.70'	T = 67.57'
L = 89.43'	L = 44.71'	L = 55.57'	L = 92.25'	L = 118.84'
E = 3.36'	E = 1.68'	E = 3.99' +	E = 11.67'	E = 20.69'
P.C. STA = 0+31.51	P.C. STA = 1+47.71	P.C. STA = 3+69.63	P.C. STA = 4+57.14	P.C. STA = 5+80.32
P.T. STA = 1+20.93	P.T. STA = 1+92.42	P.T. STA = 4+25.21	P.T. STA = 5+49.39	P.T. STA = 6+99.17

- NOTES:
- MULTI-USE PATH TO CONSIST OF:
PORTLAND CEMENT CONCRETE SIDEWALK 5 INCH
AGGREGATE BASE COURSE, TYPE B, 4"
 - REFER TO SHEET 78 OF THE JOINTING
PLANS FOR PATH JOINT LAYOUT
 - REFER TO SHEET 29 FOR ROADWAY
DIMENSIONS AND CURVE DATA



<p>CMT CHAMFORD, MURPHY & TULLY, INC. CONSULTING ENGINEERS License No. 184-00063</p>	USER NAME = Steve Prange	DESIGNED SJP / MNB	REVISED -	<p align="center">CITY OF ROCKFORD MORGAN STREET BRIDGE</p>	<p align="center">PROPOSED ROADWAY PLAN & PROFILE MULTI-USE PATH</p>	F.A. RTE. = 5077	SECTION = 99-00493-00-BR	COUNTY = WINNEBAGO	TOTAL SHEETS = 253	SHEET NO. = 34	
	PLOT SCALE = 60.0000' / IN.	CHECKED SJP	REVISED -			SCALE: 1" = 30'	SHEET NO. 1 OF 1 SHEETS	STA. TO STA.	FED. ROAD DIST. NO. 2 [ILLINOIS]	FED. AID PROJECT BRM-5091651	
	PLOT DATE = 02/04/11	DATE 02/04/2011	REVISED -								

PLAN	SURVEYED	DATE
	ALIGNED	
	CHECKED	
	BY	
	NO. OF WAY CHECKED	
	FILE NAME	

PROFILE	SURVEYED	DATE
	ALIGNED	
	CHECKED	
	BY	
	NO. OF WAY CHECKED	
	FILE NAME	

L:\PROJECTS\02020002\02-04-11\02020002-00-00493-Sheets\AR_PMP_Path_02-1.dwg