

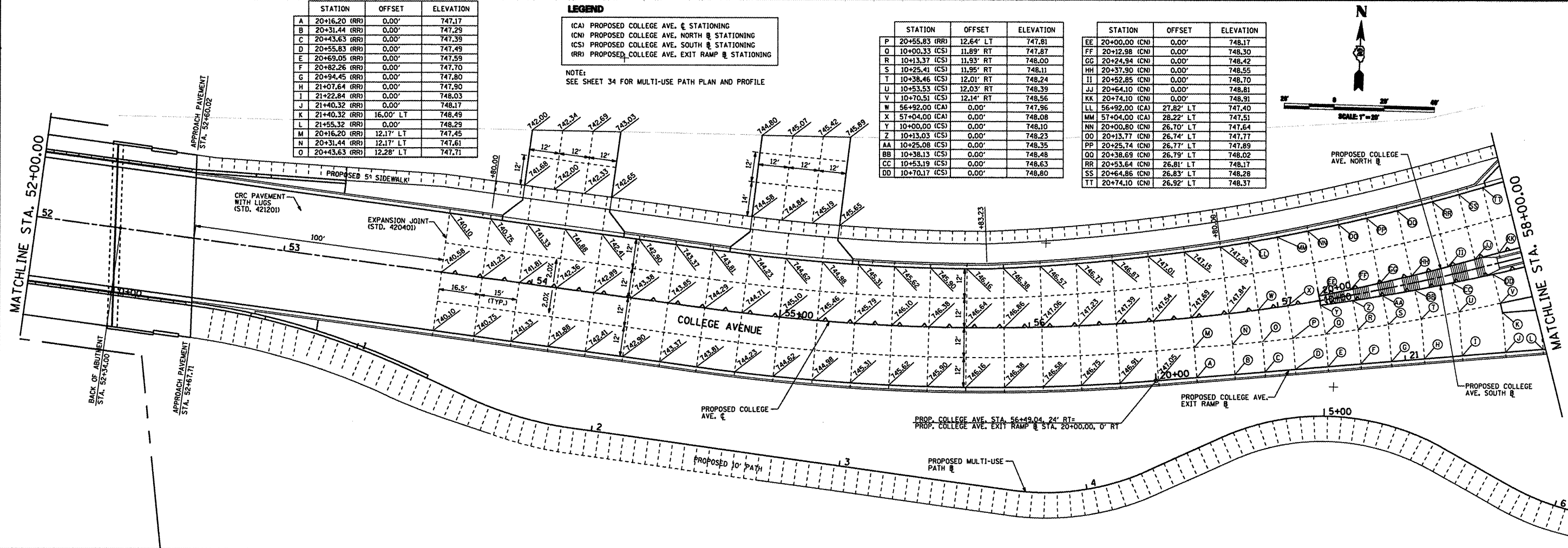
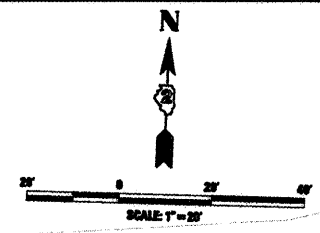
	STATION	OFFSET	ELEVATION
A	20+16.20 (RR)	0.00'	747.17
B	20+31.44 (RR)	0.00'	747.29
C	20+43.63 (RR)	0.00'	747.39
D	20+55.83 (RR)	0.00'	747.49
E	20+69.05 (RR)	0.00'	747.59
F	20+82.26 (RR)	0.00'	747.70
G	20+94.45 (RR)	0.00'	747.80
H	21+07.64 (RR)	0.00'	747.90
I	21+22.84 (RR)	0.00'	748.03
J	21+40.32 (RR)	0.00'	748.17
K	21+40.32 (RR)	16.00' LT	748.49
L	21+55.32 (RR)	0.00'	748.29
M	20+16.20 (RR)	12.17' LT	747.45
N	20+31.44 (RR)	12.17' LT	747.61
O	20+43.63 (RR)	12.28' LT	747.71

**LEGEND**  
 (CA) PROPOSED COLLEGE AVE. CENTER STATIONING  
 (CN) PROPOSED COLLEGE AVE. NORTH CENTER STATIONING  
 (CS) PROPOSED COLLEGE AVE. SOUTH CENTER STATIONING  
 (RR) PROPOSED COLLEGE AVE. EXIT RAMP CENTER STATIONING

NOTE:  
 SEE SHEET 34 FOR MULTI-USE PATH PLAN AND PROFILE

	STATION	OFFSET	ELEVATION
P	20+55.83 (RR)	12.64' LT	747.81
Q	10+00.33 (CS)	11.89' RT	747.87
R	10+13.37 (CS)	11.93' RT	748.00
S	10+25.41 (CS)	11.95' RT	748.11
T	10+38.46 (CS)	12.01' RT	748.24
U	10+53.53 (CS)	12.03' RT	748.39
V	10+70.51 (CS)	12.14' RT	748.56
W	56+92.00 (CA)	0.00'	747.96
X	57+04.00 (CA)	0.00'	748.08
Y	10+00.00 (CS)	0.00'	748.10
Z	10+13.03 (CS)	0.00'	748.23
AA	10+25.08 (CS)	0.00'	748.35
BB	10+38.13 (CS)	0.00'	748.48
CC	10+53.19 (CS)	0.00'	748.63
DD	10+70.17 (CS)	0.00'	748.80

	STATION	OFFSET	ELEVATION
EE	20+00.00 (CN)	0.00'	748.17
FF	20+12.98 (CN)	0.00'	748.30
GG	20+24.94 (CN)	0.00'	748.42
HH	20+37.90 (CN)	0.00'	748.55
II	20+52.85 (CN)	0.00'	748.70
JJ	20+64.10 (CN)	0.00'	748.81
KK	20+74.10 (CN)	0.00'	748.91
LL	56+92.00 (CA)	27.82' LT	747.40
MM	57+04.00 (CA)	28.22' LT	747.51
NN	20+00.80 (CN)	26.70' LT	747.64
OO	20+13.77 (CN)	26.74' LT	747.77
PP	20+25.74 (CN)	26.77' LT	747.89
QQ	20+38.69 (CN)	26.79' LT	748.02
RR	20+53.64 (CN)	26.81' LT	748.17
SS	20+64.86 (CN)	26.83' LT	748.28
TT	20+74.10 (CN)	26.92' LT	748.37



I:\rockford\0826802\cd\an\cadd\sheet\VA\_JNT\_28\_2.dgn

<p><b>CMT</b>          CRAWFORD, MURPHY &amp; TILLY, INC.          CONSULTING ENGINEERS          License No. 064-00063</p>	USER NAME = Steve Prange	DESIGNED - SJP / MNB	REVISED -	<p><b>CITY OF ROCKFORD</b>  <b>MORGAN STREET BRIDGE</b></p>	<p><b>PROPOSED PAVEMENT JOINTING PLAN</b>  <b>MORGAN STREET / COLLEGE AVENUE</b></p>	F.A. RTE. 5077	SECTION 99-00493-00-BR	COUNTY WINNEBAGO	TOTAL SHEETS 253	SHEET NO. 78			
	PLOT SCALE = 40,0000' / IN.	CHECKED - SJP	REVISED -			SCALE: 1"=20'	SHEET NO. 2 OF 5 SHEETS	STA. 46+00 TO STA. 58+00	CONTRACT NO. 85529				
	PLOT DATE = 02/04/11	DATE - 02/04/2011	REVISED -			FED. ROAD DIST. NO. 2 [ILLINOIS] FED. AID PROJECT BRN-509965							