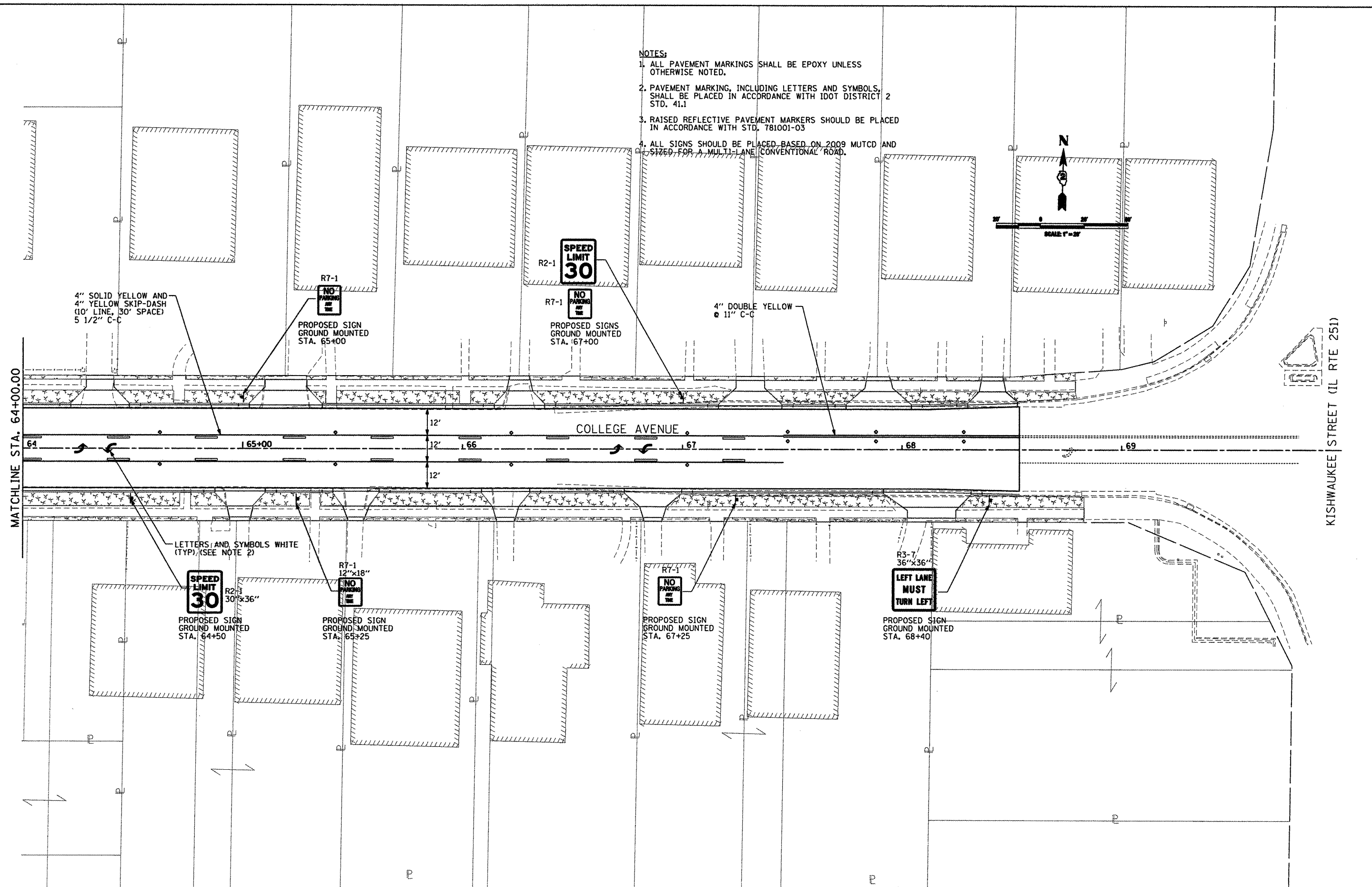
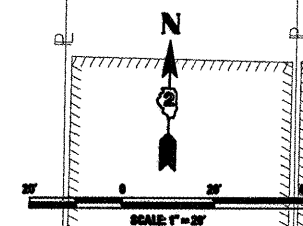


NOTES:

1. ALL PAVEMENT MARKINGS SHALL BE EPOXY UNLESS OTHERWISE NOTED.
2. PAVEMENT MARKING, INCLUDING LETTERS AND SYMBOLS, SHALL BE PLACED IN ACCORDANCE WITH IDOT DISTRICT 2 STD. 41.1
3. RAISED REFLECTIVE PAVEMENT MARKERS SHOULD BE PLACED IN ACCORDANCE WITH STD. 781001-03
4. ALL SIGNS SHOULD BE PLACED BASED ON 2009 MUTCD AND SIZED FOR A MULTI-LANE CONVENTIONAL ROAD.



MATCHLINE STA. 64+00.00

KISHWAUKEE STREET (IL RTE 251)

L:\1000\FRD\022808\FD_02_04_11\022808.dwg, Sheeta.rvt, PAK_20_08.dgn

CMT
 CHARFORD, MURPHY & TILLY, INC.
 CONSULTING ENGINEERS
 License No. 184-00063

USER NAME = Steve Prange	DESIGNED - SJP / MNB	REVISED -
	DRAWN - ERD	REVISED -
PLOT SCALE = 40,000' / IN.	CHECKED - SJP	REVISED -
PLOT DATE = 02/04/11	DATE - 02/04/2011	REVISED -

**CITY OF ROCKFORD
 MORGAN STREET BRIDGE**

PAVEMENT MARKING, LANDSCAPING, AND SIGNING PLAN

F.A. RTE. 5077	SECTION 99-00493-00-BR	COUNTY WINNEBAGO	TOTAL SHEETS 253	SHEET NO. 97
CONTRACT NO. 85529			FED. ROAD DIST. NO. 2 [ILLINOIS] FED. AID PROJECT BRM-5099(65)	

SCALE: SHEET NO. OF SHEETS STA. TO STA.