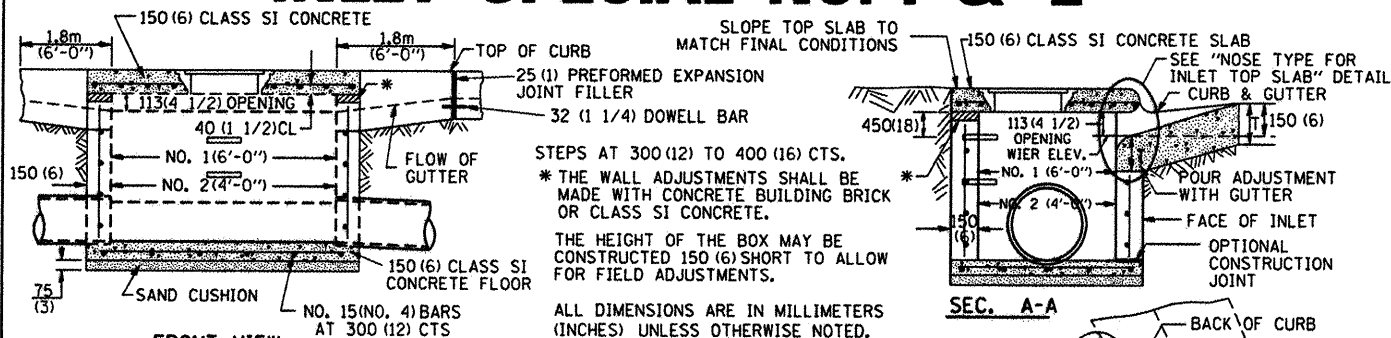


INLET SPECIAL NO. 1 & 2

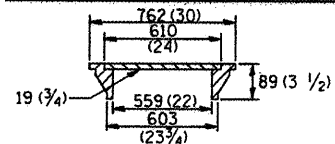


FRONT VIEW

NOTES

SEE STANDARD 602701 FOR DETAILS OF STEPS. 25 (1) PREFORMED EXPANSION JOINTS AS SHOWN SHALL BE PROVIDED ON EACH SIDE OF INLET. CLASS SI CONCRETE OR PRECAST CONCRETE SHALL BE USED THROUGHOUT. THE SIDE WALLS MAY BE BUILT AS PRECAST SEGMENTAL SECTIONS. REINFORCEMENT FOR INLET SPECIAL NO. 1 & 2 SHALL BE ACCORDING TO "INLET SPECIAL NO. 1 & 2 REINFORCEMENT DETAIL"

LIGHT WEIGHT MANHOLE CASTING



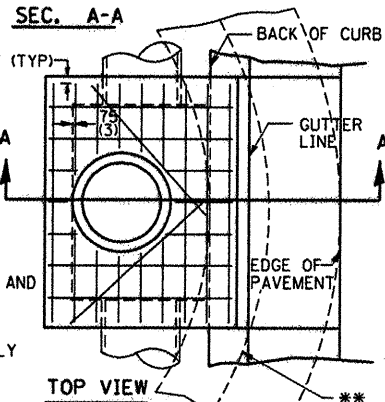
TOTAL WEIGHT 73 KG. (160 LBS.)

STEPS SHALL BE OMITTED WHEN DEPTH OF INLET IS LESS THAN 1.5 m (5 ft.) THE INLET SHALL BE CAST IN PLACE OR PRECAST. EXCEPT AS NOTED HEREON INLET SPECIAL NO. 1 & 2 SHALL BE CONSTRUCTED IN ACCORDANCE WITH SECTION 602 OF THE STANDARD SPECIFICATIONS.

THE CONTRACT UNIT PRICE EACH FOR INLET SPECIAL NO. 1 & 2 SHALL INCLUDE THE COST OF FURNISHING AND INSTALLING THE FRAME, LID, REINFORCEMENT BARS, FLOOR AND TOP SLABS, CAST IRON STEPS (IF USED).

THE CURB AND GUTTER WILL BE PAID FOR SEPARATELY AND WILL BE MEASURED THROUGH THE INLET.

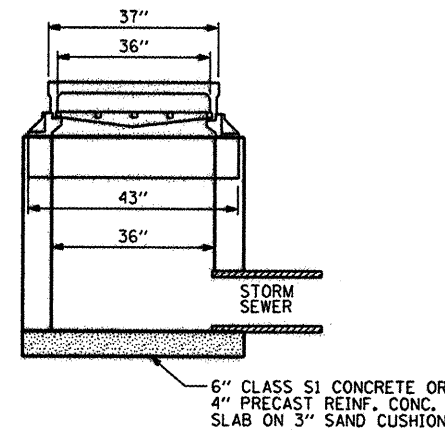
THE CURB AND GUTTER ADJACENT TO AND 1.8m (6 FT) ON EITHER SIDE OF THE INLET SHALL BE CONSTRUCTED AS SHOWN WITH NO ADDITIONAL COMPENSATION FOR THE TRANSITION.



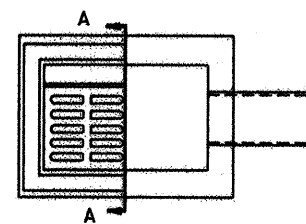
TOP VIEW

** WHEN INLET IS CONSTRUCTED IN RETURN, THE TOP OF SLAB SHALL CONFORM TO THE RADIUS OF THE RETURN.

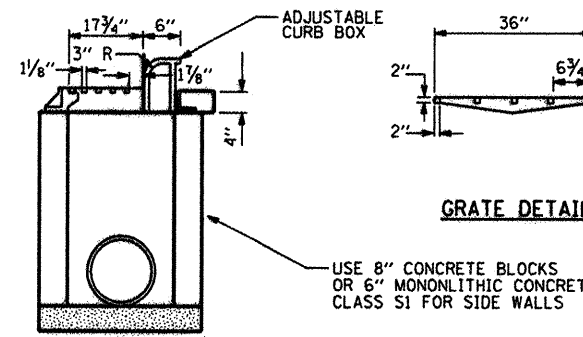
INLET BOX, SPECIAL



LONGITUDINAL SECTION



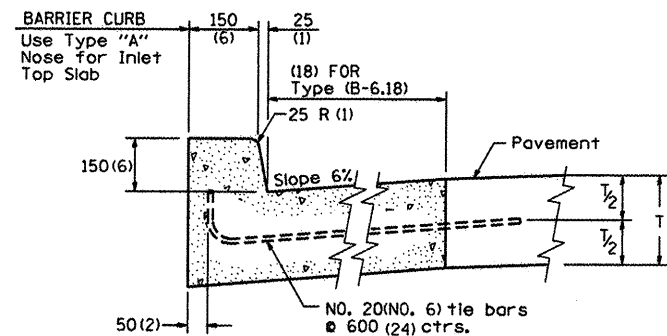
PLAN



SECTION A-A

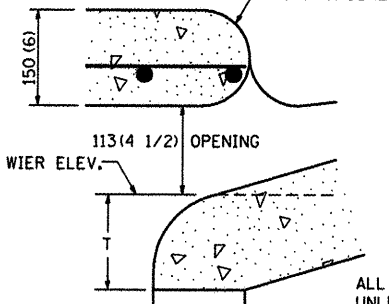
NOTE: FRAME & GRATE NEENAH NO. R-3246 OR APPROVED EQUAL APPROXIMATE WEIGHT 500 LBS

NOSE TYPE FOR INLET TOP SLAB



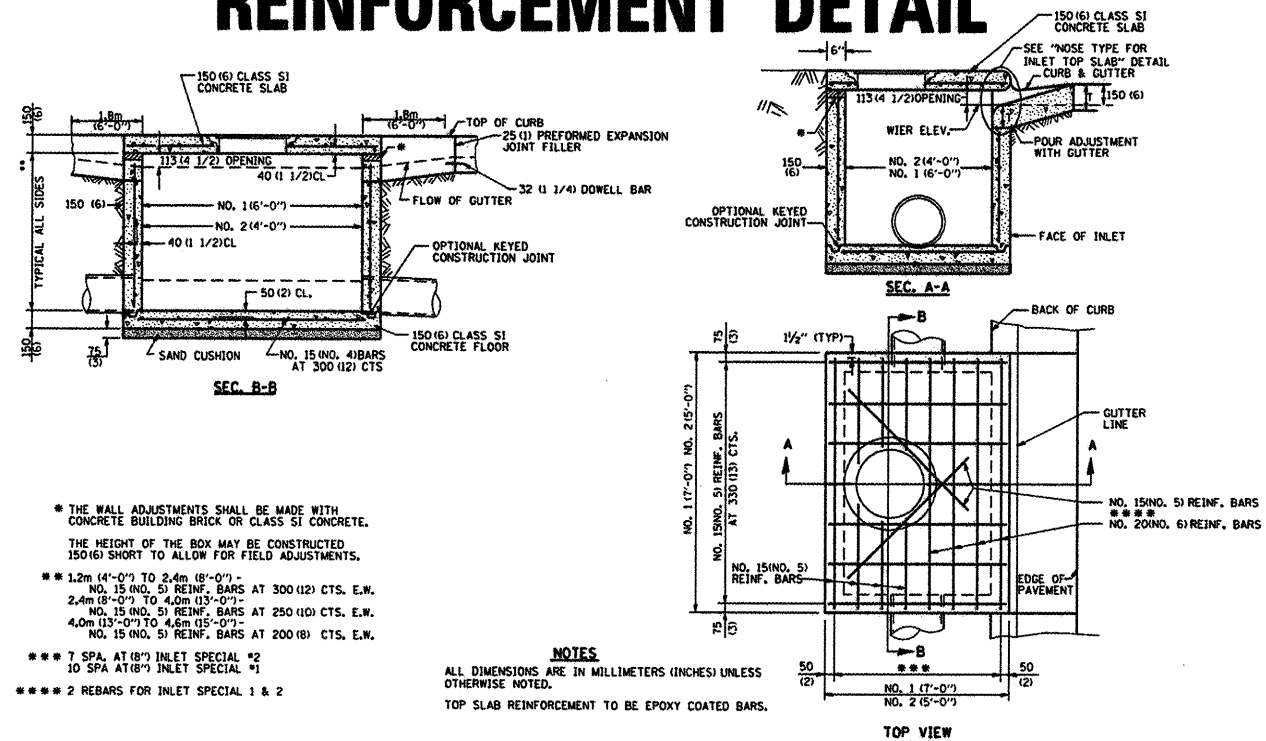
TYPE "A"

TO BE USED ON EXISTING OR PROPOSED 150 (6) BARRIER CURB



ALL DIMENSIONS ARE IN MILLIMETERS (INCHES) UNLESS OTHERWISE NOTED.

INLET SPECIAL NO. 1, 2 REINFORCEMENT DETAIL



* THE WALL ADJUSTMENTS SHALL BE MADE WITH CONCRETE BUILDING BRICK OR CLASS SI CONCRETE. THE HEIGHT OF THE BOX MAY BE CONSTRUCTED 150 (6) SHORT TO ALLOW FOR FIELD ADJUSTMENTS.

** 1.2m (4'-0'') TO 2.4m (8'-0'') - NO. 15 (NO. 5) REINF. BARS AT 300 (12) CTS. E.W.
2.4m (8'-0'') TO 4.0m (13'-0'') - NO. 15 (NO. 5) REINF. BARS AT 250 (10) CTS. E.W.
4.0m (13'-0'') TO 4.6m (15'-0'') - NO. 15 (NO. 5) REINF. BARS AT 200 (8) CTS. E.W.

*** 1 SPA. AT (8'') INLET SPECIAL #2
10 SPA AT (8'') INLET SPECIAL #1

**** 2 REBARS FOR INLET SPECIAL 1 & 2

NOTES

ALL DIMENSIONS ARE IN MILLIMETERS (INCHES) UNLESS OTHERWISE NOTED.
TOP SLAB REINFORCEMENT TO BE EPOXY COATED BARS.

TOP VIEW

Project: C:\p02\85529\cadd\sheet\IN.CONST.DET.LR.dgn



USER NAME = Steve Prange	DESIGNED - SJP / MNB	REVISED -
PLOT SCALE = 40.0000' / IN.	DRAWN - ERD	REVISED -
PLOT DATE = 02/04/11	CHECKED - SJP	REVISED -
	DATE - 02/04/2011	REVISED -

CITY OF ROCKFORD
MORGAN STREET BRIDGE

CONSTRUCTION DETAILS - 3

SCALE: N/A SHEET NO. 4 OF 9 SHEETS STA. N/A TO STA. N/A

F.A. RTE.	SECTION	COUNTY	TOTAL SHEETS	SHEET NO.
5077	99-00493-00-BR	WINNEBAGO	253	105
FED. ROAD DIST. NO. 2 (ILLINOIS) FED. AID PROJECT BRM-50996(S)			CONTRACT NO. 85529	