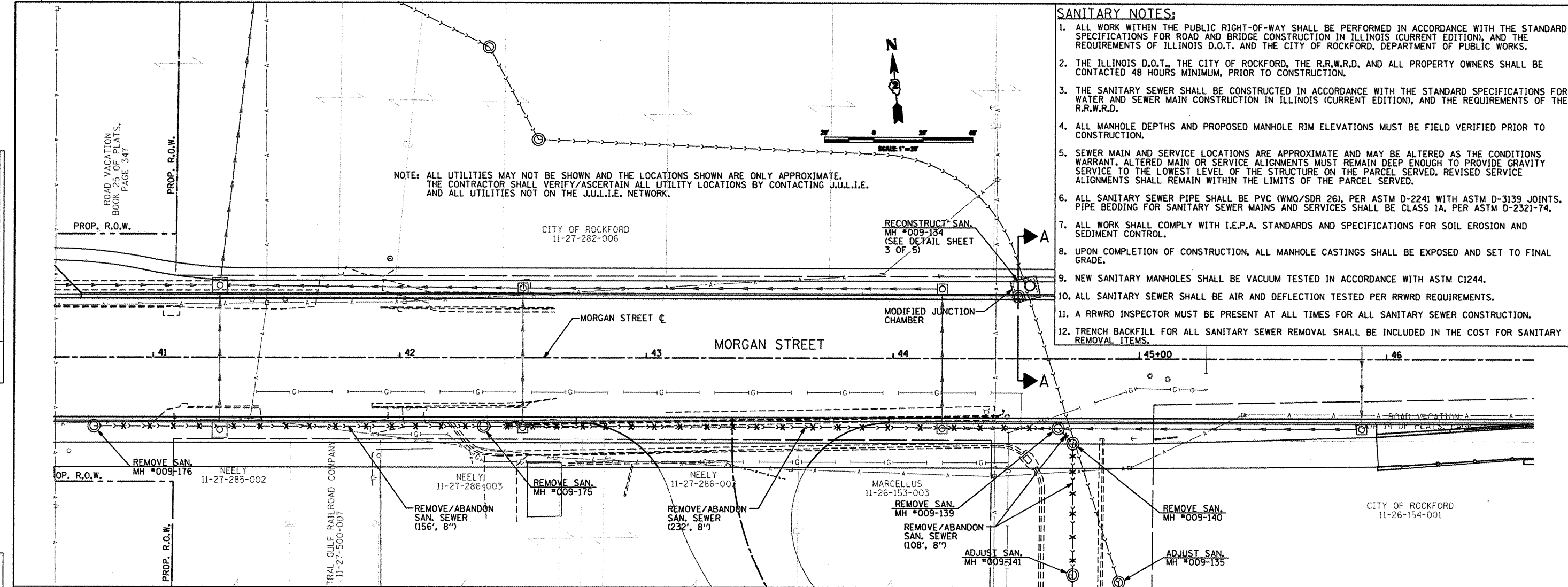
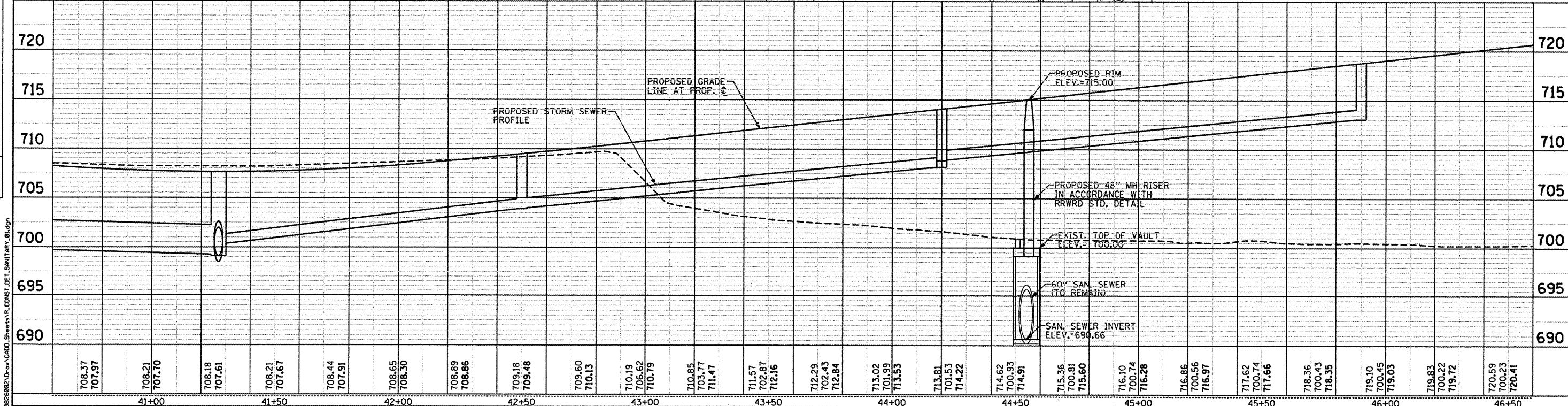


PLAN	DATE
REVISIONS	
NO.	
BY	
DATE	
APPROVED	
DATE	
NOTED	
DATE	
NO.	
BY	
DATE	

PROFILE	DATE
REVISIONS	
NO.	
BY	
DATE	
APPROVED	
DATE	
NOTED	
DATE	
NO.	
BY	
DATE	



- SANITARY NOTES:**
- ALL WORK WITHIN THE PUBLIC RIGHT-OF-WAY SHALL BE PERFORMED IN ACCORDANCE WITH THE STANDARD SPECIFICATIONS FOR ROAD AND BRIDGE CONSTRUCTION IN ILLINOIS (CURRENT EDITION), AND THE REQUIREMENTS OF ILLINOIS D.O.T., AND THE CITY OF ROCKFORD, DEPARTMENT OF PUBLIC WORKS.
  - THE ILLINOIS D.O.T., THE CITY OF ROCKFORD, THE R.R.W.R.D. AND ALL PROPERTY OWNERS SHALL BE CONTACTED 48 HOURS MINIMUM, PRIOR TO CONSTRUCTION.
  - THE SANITARY SEWER SHALL BE CONSTRUCTED IN ACCORDANCE WITH THE STANDARD SPECIFICATIONS FOR WATER AND SEWER MAIN CONSTRUCTION IN ILLINOIS (CURRENT EDITION), AND THE REQUIREMENTS OF THE R.R.W.R.D.
  - ALL MANHOLE DEPTHS AND PROPOSED MANHOLE RIM ELEVATIONS MUST BE FIELD VERIFIED PRIOR TO CONSTRUCTION.
  - SEWER MAIN AND SERVICE LOCATIONS ARE APPROXIMATE AND MAY BE ALTERED AS THE CONDITIONS WARRANT. ALTERED MAIN OR SERVICE ALIGNMENTS MUST REMAIN DEEP ENOUGH TO PROVIDE GRAVITY SERVICE TO THE LOWEST LEVEL OF THE STRUCTURE ON THE PARCEL SERVED. REVISED SERVICE ALIGNMENTS SHALL REMAIN WITHIN THE LIMITS OF THE PARCEL SERVED.
  - ALL SANITARY SEWER PIPE SHALL BE PVC (WMO/SDR 26), PER ASTM D-2241 WITH ASTM D-3139 JOINTS. PIPE BEDDING FOR SANITARY SEWER MAINS AND SERVICES SHALL BE CLASS 1A, PER ASTM D-2321-74.
  - ALL WORK SHALL COMPLY WITH I.E.P.A. STANDARDS AND SPECIFICATIONS FOR SOIL EROSION AND SEDIMENT CONTROL.
  - UPON COMPLETION OF CONSTRUCTION, ALL MANHOLE CASTINGS SHALL BE EXPOSED AND SET TO FINAL GRADE.
  - NEW SANITARY MANHOLES SHALL BE VACUUM TESTED IN ACCORDANCE WITH ASTM C1244.
  - ALL SANITARY SEWER SHALL BE AIR AND DEFLECTION TESTED PER RRWRD REQUIREMENTS.
  - A RRWRD INSPECTOR MUST BE PRESENT AT ALL TIMES FOR ALL SANITARY SEWER CONSTRUCTION.
  - TRENCH BACKFILL FOR ALL SANITARY SEWER REMOVAL SHALL BE INCLUDED IN THE COST FOR SANITARY REMOVAL ITEMS.



708.37 707.97	708.21 707.70	708.18 707.61	708.21 707.67	708.44 707.91	708.65 708.30	708.89 708.86	709.18 709.48	709.60 710.13	710.19 706.62 710.79	710.85 703.77 711.47	711.57 702.67 712.16	712.29 702.43 712.84	713.02 701.99 713.53	713.81 701.53 714.22	714.62 700.93 714.91	715.36 700.81 715.60	716.10 700.74 716.28	716.86 700.56 716.97	717.62 700.74 717.66	718.36 700.43 718.35	719.10 700.45 719.03	719.83 700.22 719.72	720.59 700.23 720.41
41+00		41+50		42+00		42+50		43+00		43+50		44+00		44+50		45+00		45+50		46+00		46+50	

<p>CMT CRAWFORD, MURPHY &amp; TILLY, INC. CONSULTING ENGINEERS License No. 04-00063</p>	USER NAME = Steve Prange	DESIGNED SJP / MNB	REVISED -	<b>CITY OF ROCKFORD</b> <b>MORGAN STREET BRIDGE</b>	<b>PROPOSED SANITARY SEWER RELOCATION</b> <b>MORGAN STREET / COLLEGE AVENUE</b>	F.A. RTE. 5077	SECTION 99-00493-00-BR	COUNTY WINNEBAGO	TOTAL SHEETS 253	SHEET NO. 110
	PLOT SCALE = 40.0000' / IN.	CHECKED SJP	REVISED -			SCALE: 1" = 20'	SHEET NO. 1 OF 5 SHEETS	STA. 40+60 TO STA. 46+60	FED. ROAD DIST. NO. 2 [ILLINOIS]	FED. AID PROJECT BRM-50991651
	PLOT DATE = 02/04/11	DATE 02/04/2011	REVISED -			CONTRACT NO. 85529				