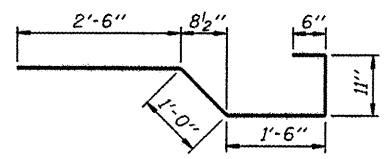
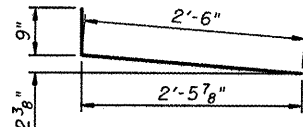


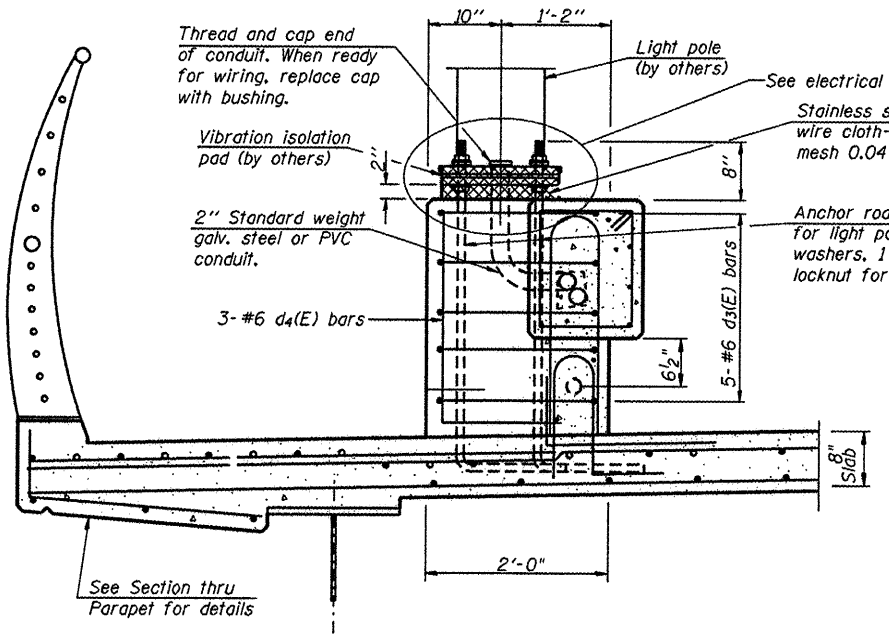
SECTION THRU PARAPET
(North Parapet Shown, South Parapet Similar)



BAR x(E)

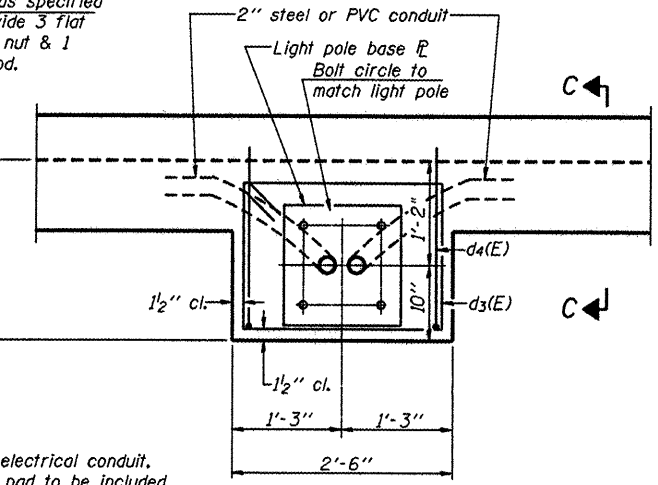


BAR a14(E)

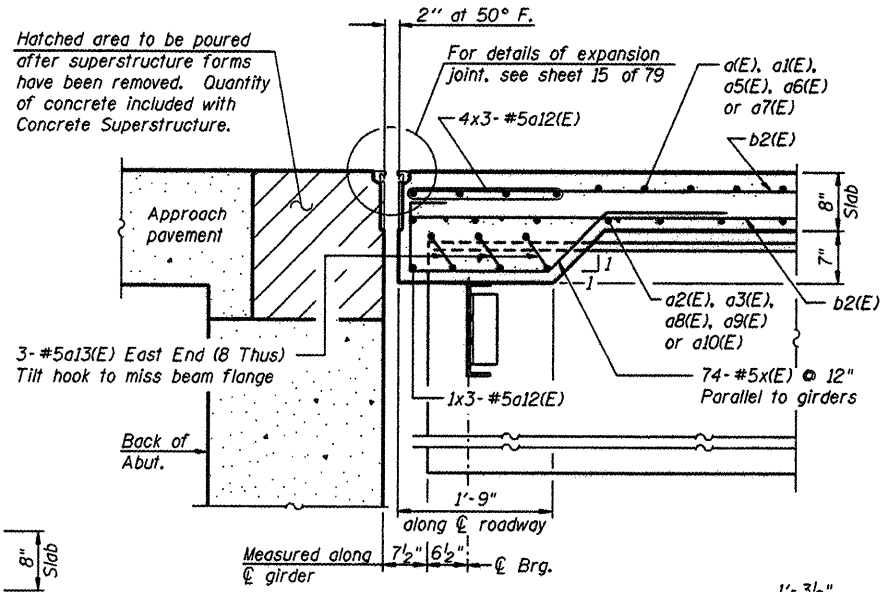


SECTION C-C

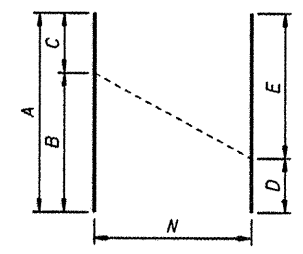
NOTE:
Cost of stainless steel wire cloth, electrical conduit, anchor rods and vibration isolation pad to be included in the price for Light Pole, Aluminum, 40 Ft. M.H., 6 Ft. Mast Arm.



PLAN



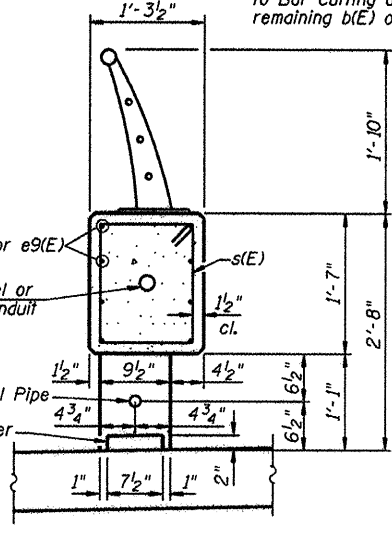
SECTION B-B



BAR CUTTING DIAGRAM

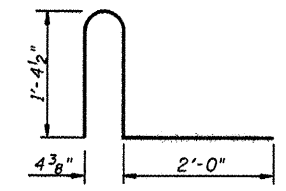
Bar	N Bars	A	B	C	D	E
a5(E)	3	28'-2"	22'-10"	5'-4"	14'-1"	14'-1"
a6(E)	3	30'-1"	26'-0"	4'-1"	17'-3"	12'-10"
a7(E)	3	27'-10"	22'-8"	5'-2"	13'-11"	13'-11"
a8(E)	2	31'-2"	26'-4"	4'-10"	19'-2"	12'-0"
a9(E)	1	22'-1"	14'-8"	7'-5"	-	-
a10(E)	2	33'-1"	27'-3"	5'-10"	20'-1"	13'-0"
b2(E)	74	21'-11"	14'-9"	7'-2"	10'-11"	11'-0"

Order A5(E) thru A10(E) bars full length. Cut according to Bar Cutting diagram a(E). Use remainder to splice with remaining. Order b2(E) bars full length. Cut according to Bar Cutting diagram. Use remainder to splice with remaining b(E) or b1(E) bars.

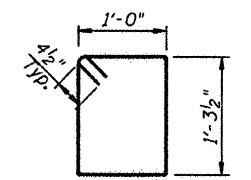


SECTION THRU PARAPET AT OPENING
(North Parapet Shown, South Parapet Similar)

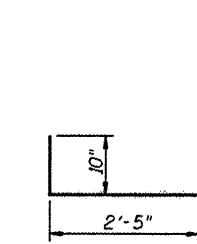
*Embed stainless steel pipe, 1/2" (std.) 6" into concrete parapet posts at each end. Cost to be included with Parapet Railing, Special.



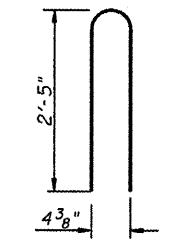
BAR d1(E)



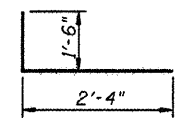
BAR s50(E)



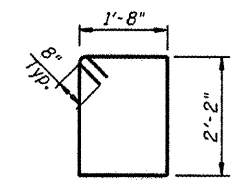
BAR d(E)



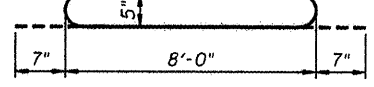
BAR d2(E)



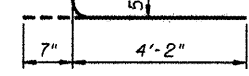
BAR d4(E)



BAR d3(E)



BAR a13(E)



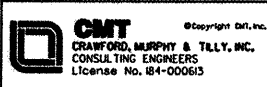
BAR x1(E)

SUPERSTRUCTURE BILL OF MATERIAL

Bar	No.	Size	Length	Shape
a(E)	1085	#5	27'-4"	
a1(E)	2171	#5	25'-0"	
a2(E)	664	#5	19'-0"	
a3(E)	1326	#5	29'-2"	
a4(E)	1088	#6	6'-6"	
a5(E)	3	#5	28'-2"	
a6(E)	3	#5	30'-1"	
a7(E)	3	#5	27'-10"	
a8(E)	2	#5	31'-2"	
a9(E)	1	#5	22'-1"	
a10(E)	2	#5	33'-1"	
a12(E)	15	#5	25'-11"	
a13(E)	24	#5	9'-2"	
a14(E)	2176	#5	2'-11"	
a15(E)	96	#5	2'-0"	
b(E)	1406	#5	27'-10"	
b1(E)	1364	#5	24'-4"	
b2(E)	74	#5	21'-11"	
b3(E)	292	#5	32'-0"	
b4(E)	584	#5	15'-0"	
d(E)	1356	#5	3'-3"	
d1(E)	1356	#5	3'-9 1/2"	
d2(E)	1356	#5	5'-0 1/2"	
d3(E)	30	#6	9'-0"	
d4(E)	18	#6	3'-10"	
e(E)	32	#5	33'-2"	
e1(E)	32	#5	47'-9"	
e2(E)	80	#5	43'-9"	
e3(E)	32	#5	28'-6"	
e4(E)	16	#5	29'-2"	
e5(E)	16	#5	8'-5"	
e6(E)	16	#5	5'-9"	
e7(E)	164	#5	3'-9"	
e8(E)	8	#5	6'-5"	
e9(E)	16	#5	32'-0"	
e10(E)	8	#5	7'-10"	
s50(E)	2018	#4	5'-4"	
x(E)	74	#5	6'-5"	
x1(E)	74	#5	4'-9"	
Reinforcement Bars, Epoxy Coated	Pound		290,520	
Concrete Superstructure	Cu. Yds.		1,057.1	
Bridge Deck Grooving	Sq. Yds.		2,760	
Protective Coat	Sq. Yds.		4,540	

Bars indicated thus 1 x 2 - #8 etc. indicates 1 line of bars with 2 lengths per line.

L:\PROJECTS\RD\0826882\Drawings\CADD\Sheets\S.14.Superstructure Details.dwg



HNTB

DESIGNED - PA, JDJ, BPD, CJW	REVISED -
DRAWN - GLD	REVISED -
CHECKED - RJK	REVISED -
DATE - 02/04/2011	REVISED -

**CITY OF ROCKFORD
MORGAN STREET BRIDGE**

**SUPERSTRUCTURE DETAILS - I
STRUCTURE NO. 101-6108**

SCALE: SHEET NO. 13 OF 79 SHEETS STA. 47+00.74 TO STA. 52+63.50

F.A.U. RTE.	SECTION	COUNTY	TOTAL SHEETS	SHEET NO.
5077	99-00493-00-BR	WINNEBAGO	253	139
FED. ROAD DIST. NO. 2 ILLINOIS FED. AID PROJECT BRN-509969S			CONTRACT NO. 85529	