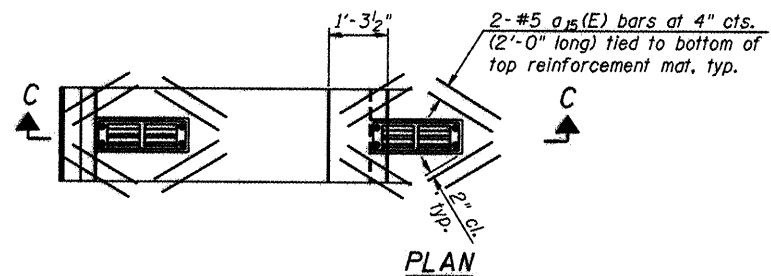


Drainage Scupper, DS-12
See sheet 16 of 79
for details.

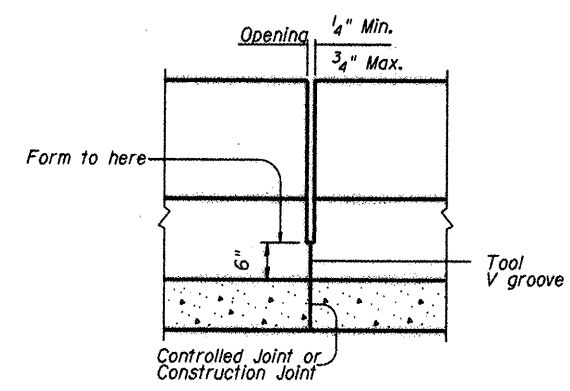
SECTION C-C



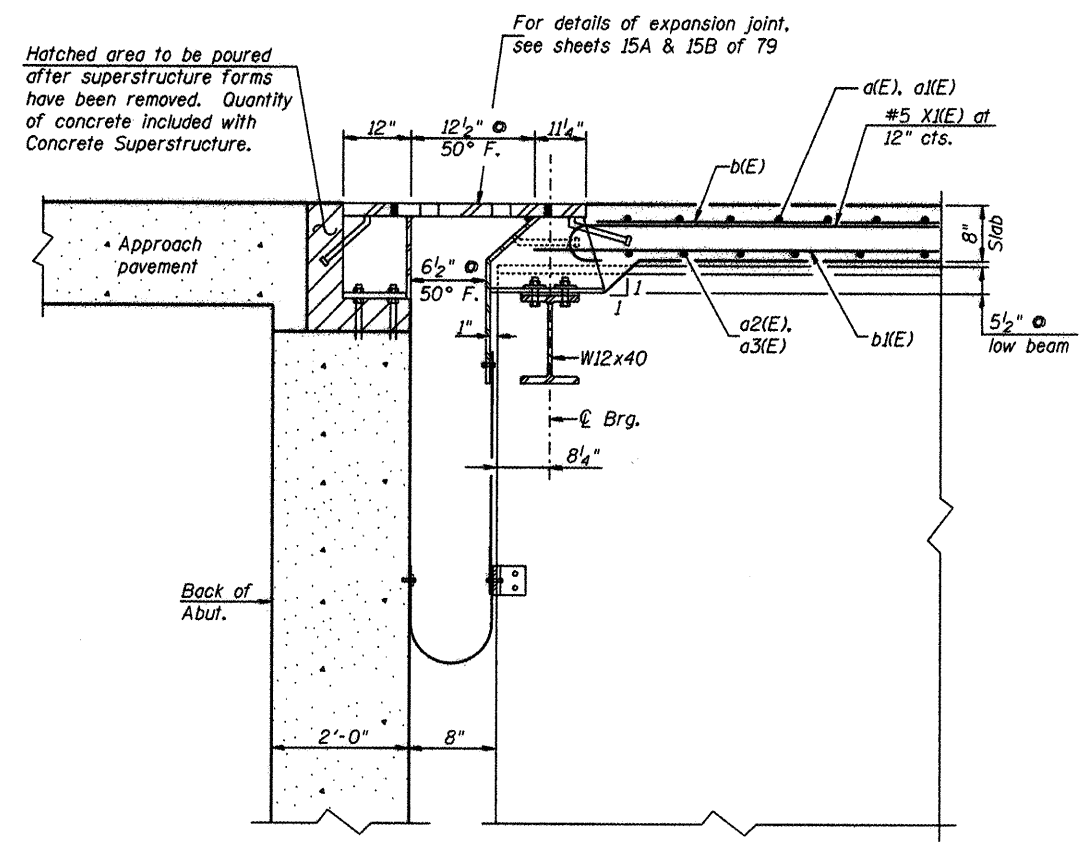
2-#5 a15(E) bars at 4" cts.
(2'-0" long) tied to bottom of
top reinforcement mat, typ.

PLAN

Note:
Cut longitudinal reinforcement to
clear drainage scupper.



POST JOINT DETAIL



SECTION A-A

Hatched area to be poured
after superstructure forms
have been removed. Quantity
of concrete included with
Concrete Superstructure.

For details of expansion joint,
see sheets 15A & 15B of 79

Back of
Abut.

Slab

5 1/2" low beam

L:\ROCKFORD\8529\Drawings\1400_Sheets\14_Superstructure_Details_2.dgn

CMT
© Copyright Cmt, Inc.
CRAWFORD, MURPHY & TULLY, INC.
CONSULTING ENGINEERS
License No. 024-00063

HNTB

DESIGNED - PA, JDJ, BPD, CJW	REVISED -
DRAWN - GLD	REVISED -
CHECKED - RJK	REVISED -
DATE - 02/04/2011	REVISED -

**CITY OF ROCKFORD
MORGAN STREET BRIDGE**

**SUPERSTRUCTURE DETAILS - II
STRUCTURE NO. 101-6108**

SCALE: SHEET NO. 14 OF 79 SHEETS STA. 47+00.74 TO STA. 52+63.50

F.A.J. RTE.	SECTION	COUNTY	TOTAL SHEETS	SHEET NO.
5077	99-00493-00-BR	WINNEBAGO	253	140
CONTRACT NO. 85529			FED. ROAD DIST. NO. 2 [ILLINOIS] FED. AID PROJECT BRN-5099165	