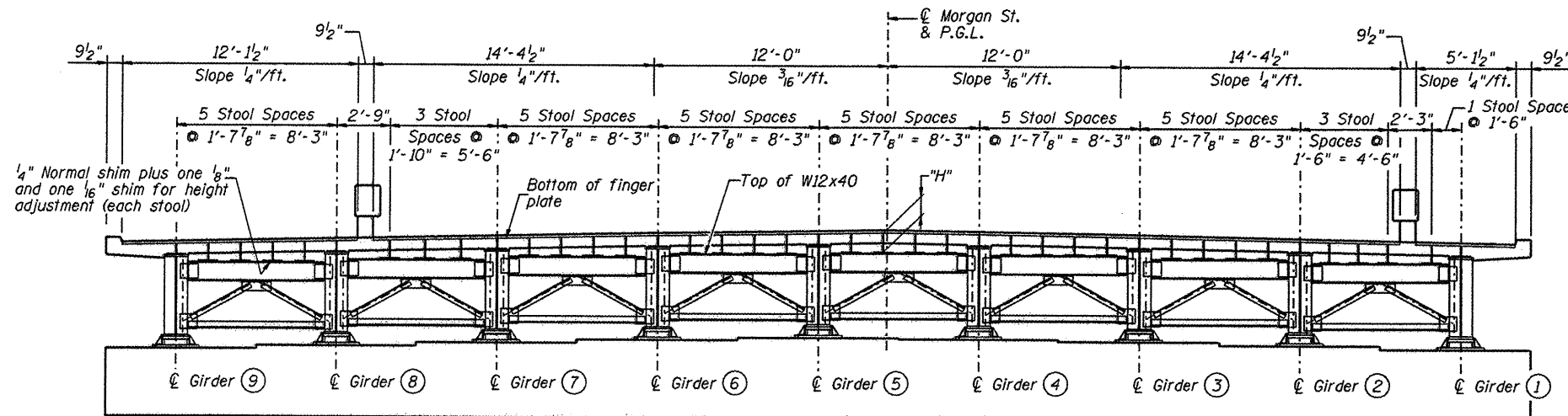


PLAN



ELEVATION

TABLE OF STOOL HEIGHTS "H"

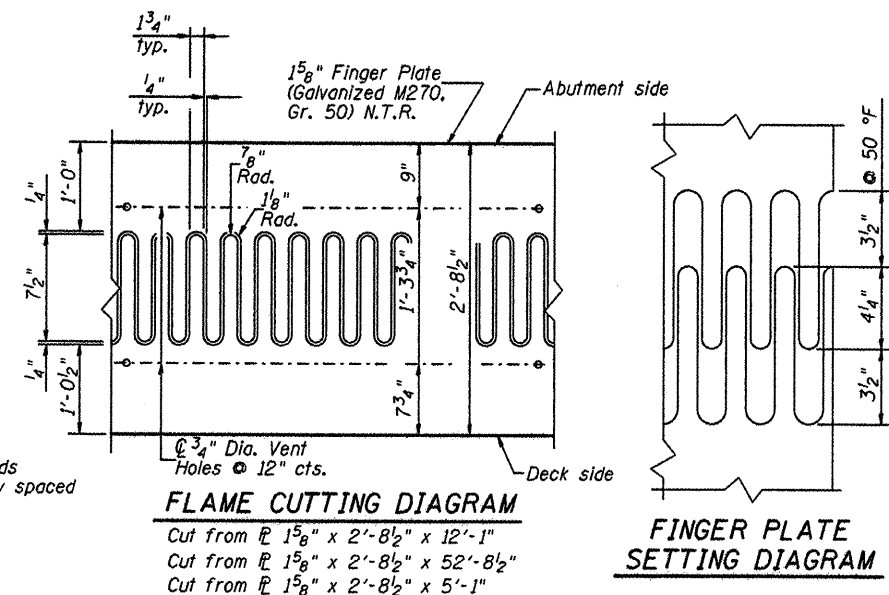
Stool Number	W-1	W-2	W-3	W-4	W-5	W-6	W-7	W-8	W-9	W-10	W-11	W-12	W-13	W-14	W-15	W-16	W-17	W-18	W-19	W-20
Height, (inches)	9 1/4"	9 1/4"	9 1/4"	9 1/4"	9 1/4"	9 1/4"	9 1/4"	9 1/4"	9 1/4"	9 1/4"	9 1/4"	9 1/4"	9 1/4"	9 1/4"	9 1/4"	9 1/4"	9 1/4"	9 1/4"	9 1/4"	9 1/4"

Stool Number	W-21	W-22	W-23	W-24	W-25	W-26	W-27	W-28	W-29	W-30	W-31	W-32	W-33	W-34	W-35
Height, (inches)	9 1/4"	9 1/4"	9 1/4"	9 1/4"	9 1/4"	9 1/4"	9 1/4"	9 1/4"	9 1/4"	9 1/4"	9 1/4"	9 1/4"	9 1/4"	9 1/4"	9 1/4"

Stool Number	E-1	E-2	E-3	E-4	E-5	E-6	E-7	E-8	E-9	E-10	E-11	E-12	E-13	E-14	E-15	E-16	E-17	E-18	E-19	E-20
Height, (inches)	7 1/8"	11 1/16"	12 1/16"	12 1/2"	12 5/16"	7 3/16"	12"	12 7/16"	12 7/8"	7 1/16"	11 5/8"	12"	12 7/16"	12 7/8"	7 3/16"	11 5/8"	11 1/16"	12 1/4"	12 9/16"	7 3/16"

Stool Number	E-21	E-22	E-23	E-24	E-25	E-26	E-27	E-28	E-29	E-30	E-31	E-32	E-33	E-34	E-35	E-36	E-37	E-38	E-39	E-40
Height, (inches)	12 5/16"	12 5/8"	12 7/16"	12 1/8"	7 1/16"	12 1/16"	12 3/8"	12 1/16"	11 3/4"	7 1/4"	12 7/8"	12 1/2"	12 1/16"	11 5/8"	7 1/8"	13"	12 5/8"	12 1/4"	11 1/16"	7 3/16"

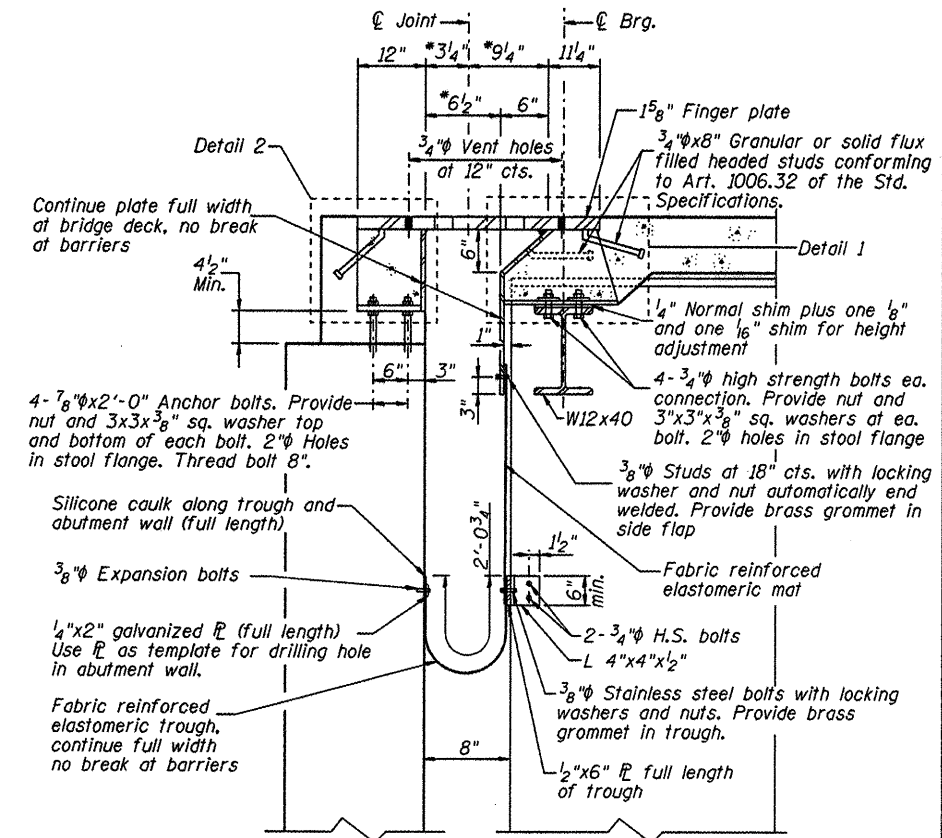
Stool heights shown in the table are calculated from the top of W12x40 to bottom of finger plate and are theoretical. Heights shown are at center bearing and cross frame and include 1/4" nominal shims. Contractor shall field verify elevation of supporting element and adjust stool heights accordingly. Cost included in unit price bid for Furnishing and Erecting Structural steel.



FLAME CUTTING DIAGRAM

Cut from 15/8" x 2'-8 1/2" x 12'-1"
Cut from 15/8" x 2'-8 1/2" x 52'-8 1/2"
Cut from 15/8" x 2'-8 1/2" x 5'-1"

FINGER PLATE SETTING DIAGRAM



SECTION A-A

*Dimensions shown are at 50° F.

NOTES:

- Steel for finger plate shall be galvanized AASHTO M270, Gr. 50.
- The finger plate shall be flame cut as provided in Article 505.04(k) of the Standard Specifications using a 1/4" wide cut.
- All dimensions for expansion gaps at 50°F, except as noted.
- For Detail 1, Detail 2 & additional notes see Sheet 15B of 79.
- Finger plate expansion joints shall be assembled in their final relative position with the ends in place for shop inspection and acceptance.

v:\b\m\m\work\ford\0826892\br-wa\lead\shasta\15A.Finger-PL-Exp-14-D1.dwg
 CMT
 CRAWFORD, MURPHY & TILLY, INC.
 CONSULTING ENGINEERS
 License No. 04-006653



DESIGNED - PA, JDJ, BPD, CJW	REVISED -
DRAWN - GLD	REVISED -
CHECKED - RJK	REVISED -
DATE - 02/04/2011	REVISED -

CITY OF ROCKFORD
MORGAN STREET BRIDGE

FINGER PLATE EXP. JOINT DETAILS - I
STRUCTURE NO. 101-6108

F.A.U. RTE.	SECTION	COUNTY	TOTAL SHEETS	SHEET NO.
5077	99-00493-00-BR	WINNEBAGO	253	141A
FED. ROAD DIST. NO. 2 [ILLINOIS] FED. AID PROJECT BRM-5098(65)			CONTRACT NO. 85529	

SCALE: SHEET NO. 15A OF 79 SHEETS STA. 47+00.74 TO STA. 52+63.50